

Supplementary Materials:

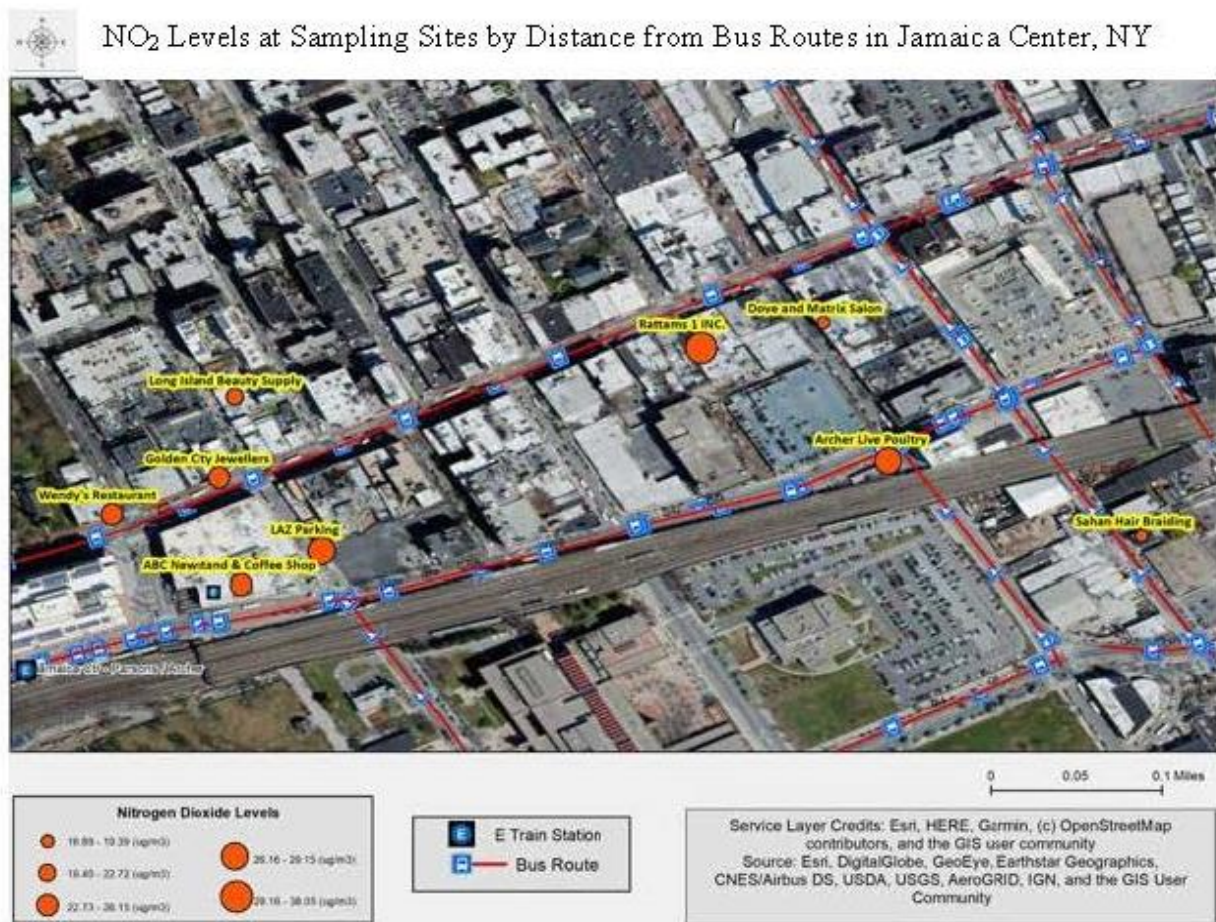


Figure S1. Study Sites at Jamaica Center

Table S1. NO₂ and O₃ Measurements in Winter, Fall, and Summer of 2019 in Jamaica Center

Air Monitoring Station	Site	NO ₂ µg/m ³ Winter	NO ₂ µg/m ³ Fall	NO ₂ µg/m ³ Summer	O ₃ µg/m ³ Fall	O ₃ µg/m ³ Summer
(1) ABC Newsstand Coffee Shop	HT-1	24.4	42.76	29.68	53.2	36.34
(2) Golden City Jeweler's	HT-2	25.1	58	41.74	38	38.45
(3) LAZ Parking	HT-3	27.96	35.74	41.49	57.6	21.47
(4) Sahan Hair Braiding	LT-4	16.89	30.6	22.75	54.3	39.73
(5) Archer Live Poultry	HT-5	29.15	34.64	34.7	60	40.74
(6) Dove and Matrix Salon	LT-6	19.39	32.99	28.14	59.2	52.25
(7) Rattans Inc.	HT-7	38.05	44.9	40.68	70.8	65.03
(8) Long Island Beauty Supply	LT-8	22.72	29.09	25.05	46.5	45.54
(9) Wendy's Restaurant	HT-9	26.15	34.58	34.46	53.3	47.21

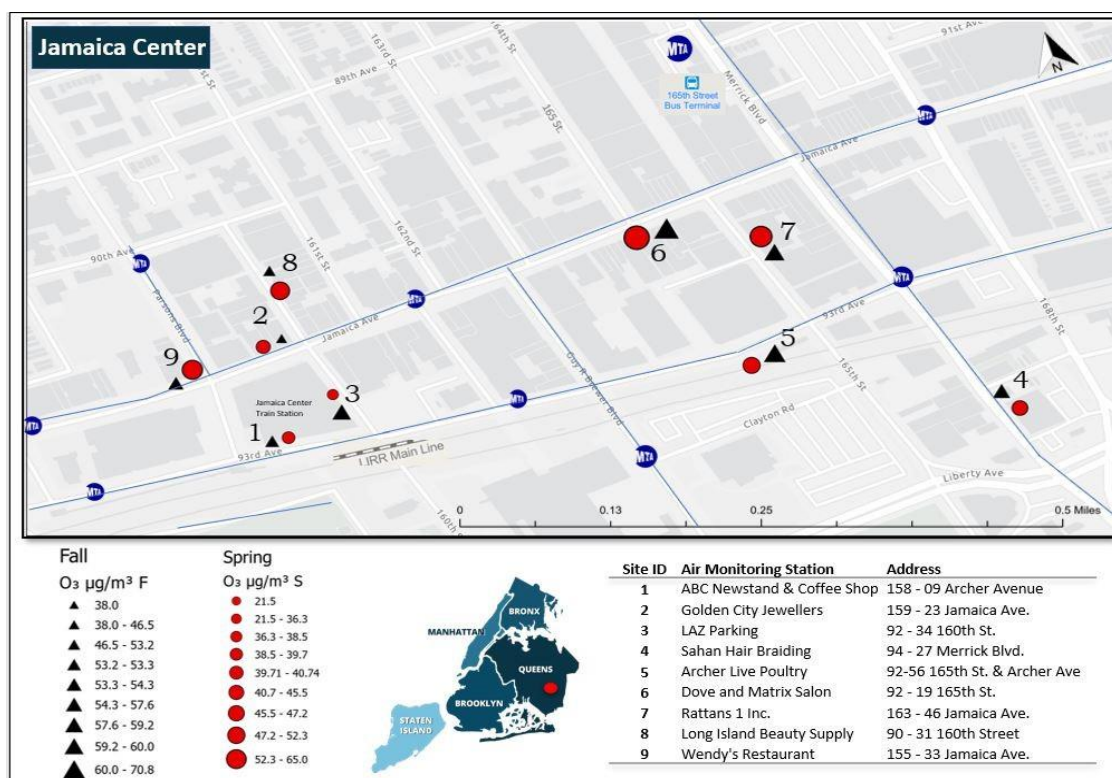


Figure S2. Locations and O_3 concentrations in fall and spring of 2019

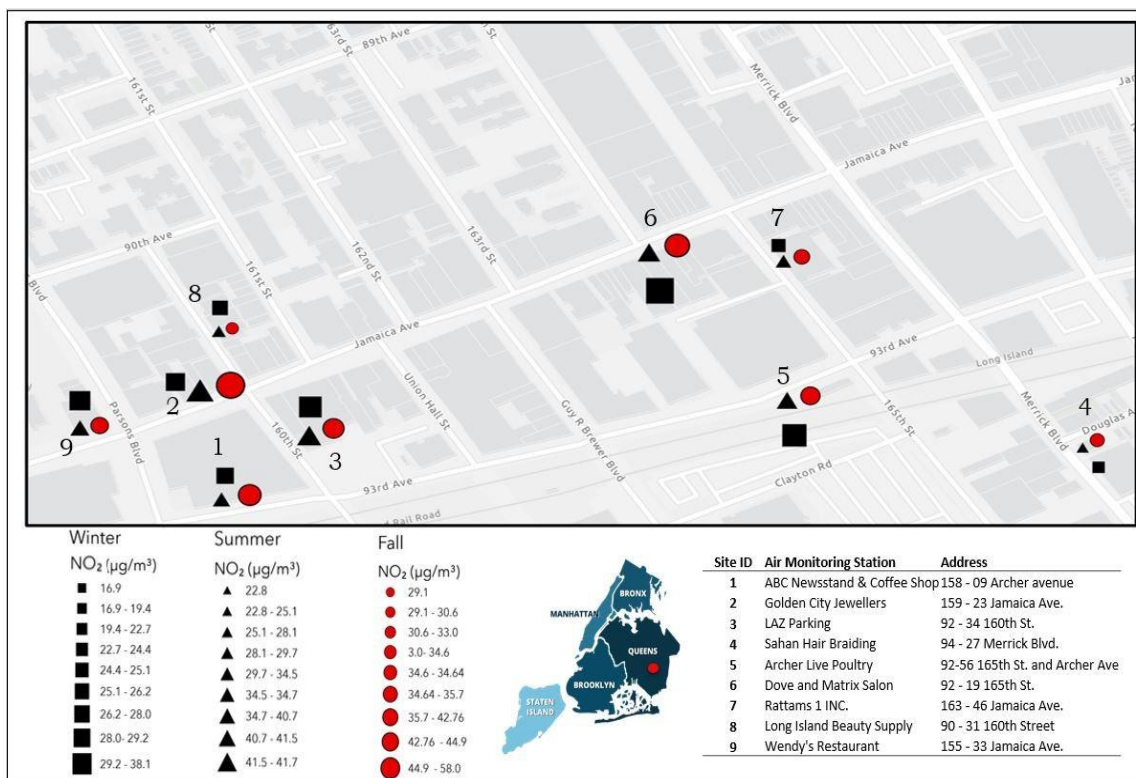


Figure S3. Locations and NO_2 concentrations in fall, summer, and winter of 2019