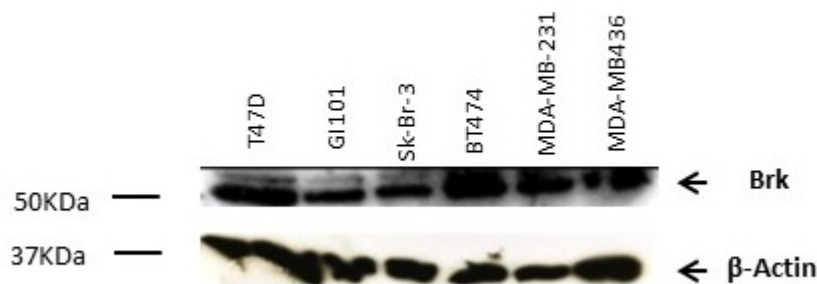
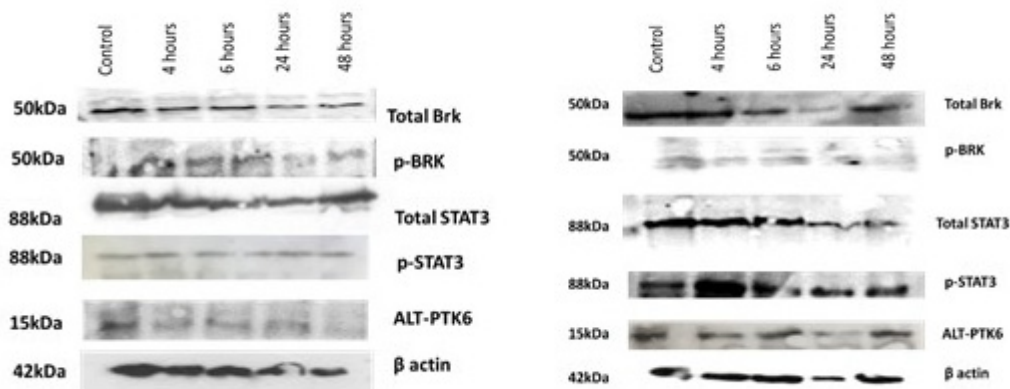


**Supplemental Figure S1: Brk is elevated in Taxol-resistant breast cancer cells.** Parental (Parent) and Taxol-resistant (Tax-R) T47D cells were lysed in 2x SDS-PAGE loading buffer and Brk levels assessed by western blotting.



**Figure S2. Triple negative breast cancer (TNBC) cell lines express Brk.** Western blot comparing the levels of Brk protein in MDA-MB-231 and MDA-MB-436 cells relative to other breast cancer cell lines



**Figure S3. Effect of 4f on phosphorylation.** MDA-MB-231 (left) and MDA-MB-436 (right) cells were treated with inhibitor 4f for the indicated time period and the effect on protein levels and phosphorylation determined by western blotting.

## Supplemental Tables

**Table S1: PTK6 overall survival**

### Overall Comparisons

	Chi-Square	df	Sig.
Log Rank (Mantel-Cox)	8.600	1	.003
Breslow (Generalized Wilcoxon)	6.339	1	.012
Tarone-Ware	7.213	1	.007

Test of equality of survival distributions for the different levels of VAR00019.

### Means and Medians for Survival Time

VAR00019	Mean <sup>a</sup>				Median			
	Estimate	Std. Error	95% Confidence Interval		Estimate	Std. Error	95% Confidence Interval	
			Lower Bound	Upper Bound			Lower Bound	Upper Bound
.00	139.600	5.515	128.791	150.408	.	.	.	.
1.00	97.292	12.077	73.621	120.964	132.000	25.888	81.259	182.741
Overall	131.451	5.594	120.487	142.415	.	.	.	.

a. Estimation is limited to the largest survival time if it is censored.

**Table S2: PTK6 disease free survival**

### Overall Comparisons

	Chi-Square	df	Sig.
Log Rank (Mantel-Cox)	4.517	1	.034
Breslow (Generalized Wilcoxon)	4.488	1	.034
Tarone-Ware	4.505	1	.034

Test of equality of survival distributions for the different levels of VAR00019.

### Means and Medians for Survival Time

VAR00019	Mean <sup>a</sup>				Median			
	Estimate	Std. Error	95% Confidence Interval		Estimate	Std. Error	95% Confidence Interval	
			Lower Bound	Upper Bound			Lower Bound	Upper Bound
.00	132.496	6.200	120.343	144.648	.	.	.	.
1.00	92.813	11.417	70.436	115.191	120.000	.	.	.
Overall	125.752	5.965	114.061	137.443	.	.	.	.

a. Estimation is limited to the largest survival time if it is censored.

**Table S3: ALT-PTK6 overall survival**

Overall Comparisons			
	Chi-Square	df	Sig.
Log Rank (Mantel-Cox)	1.153	1	.283
Breslow (Generalized Wilcoxon)	.639	1	.424
Tarone-Ware	.915	1	.339

Test of equality of survival distributions for the different levels of VAR00035.

**Means and Medians for Survival Time**

VAR00035	Mean <sup>a</sup>				Median			
	Estimate	Std. Error	95% Confidence Interval		Estimate	Std. Error	95% Confidence Interval	
			Lower Bound	Upper Bound			Lower Bound	Upper Bound
.00	114.411	10.272	94.277	134.545	.	.	.	.
1.00	133.032	6.747	119.808	146.256	.	.	.	.
Overall	130.029	5.876	118.512	141.547	.	.	.	.

a. Estimation is limited to the largest survival time if it is censored.

**Table S4: ALT-PTK6 disease free survival**

Overall Comparisons			
	Chi-Square	df	Sig.
Log Rank (Mantel-Cox)	.734	1	.392
Breslow (Generalized Wilcoxon)	.329	1	.566
Tarone-Ware	.514	1	.474

Test of equality of survival distributions for the different levels of VAR00035.

**Means and Medians for Survival Time**

VAR00035	Mean <sup>a</sup>				Median			
	Estimate	Std. Error	95% Confidence Interval		Estimate	Std. Error	95% Confidence Interval	
			Lower Bound	Upper Bound			Lower Bound	Upper Bound
.00	109.935	10.599	89.161	130.708	.	.	.	.
1.00	126.414	7.312	112.082	140.746	.	.	.	.
Overall	123.929	6.255	111.668	136.190	.	.	.	.

a. Estimation is limited to the largest survival time if it is censored.

**Table S5: ALT-PTK6:PTK6 ratio and overall survival**

**Overall Comparisons**

	Chi-Square	df	Sig.
Log Rank (Mantel-Cox)	5.360	1	.021
Breslow (Generalized Wilcoxon)	4.730	1	.030
Tarone-Ware	5.071	1	.024

Test of equality of survival distributions for the different levels of VAR00014.

**Means and Medians for Survival Time**

VAR00014	Mean <sup>a</sup>				Median			
	Estimate	Std. Error	95% Confidence Interval		Estimate	Std. Error	95% Confidence Interval	
			Lower Bound	Upper Bound			Lower Bound	Upper Bound
.00	121.357	7.657	106.349	136.364	.	.	.	.
1.00	139.333	4.535	130.444	148.222	.	.	.	.
Overall	130.029	5.876	118.512	141.547	.	.	.	.

a. Estimation is limited to the largest survival time if it is censored.