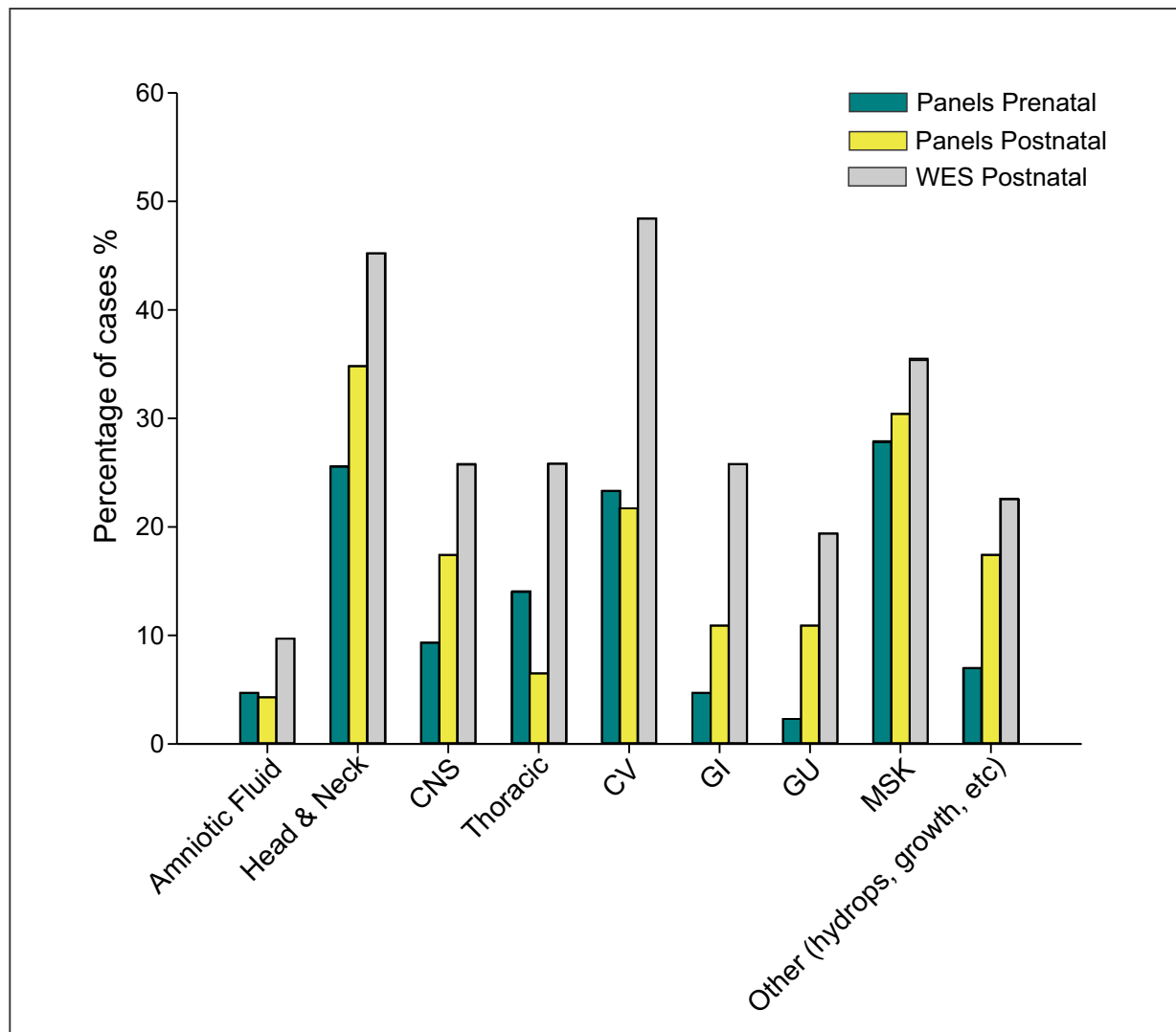
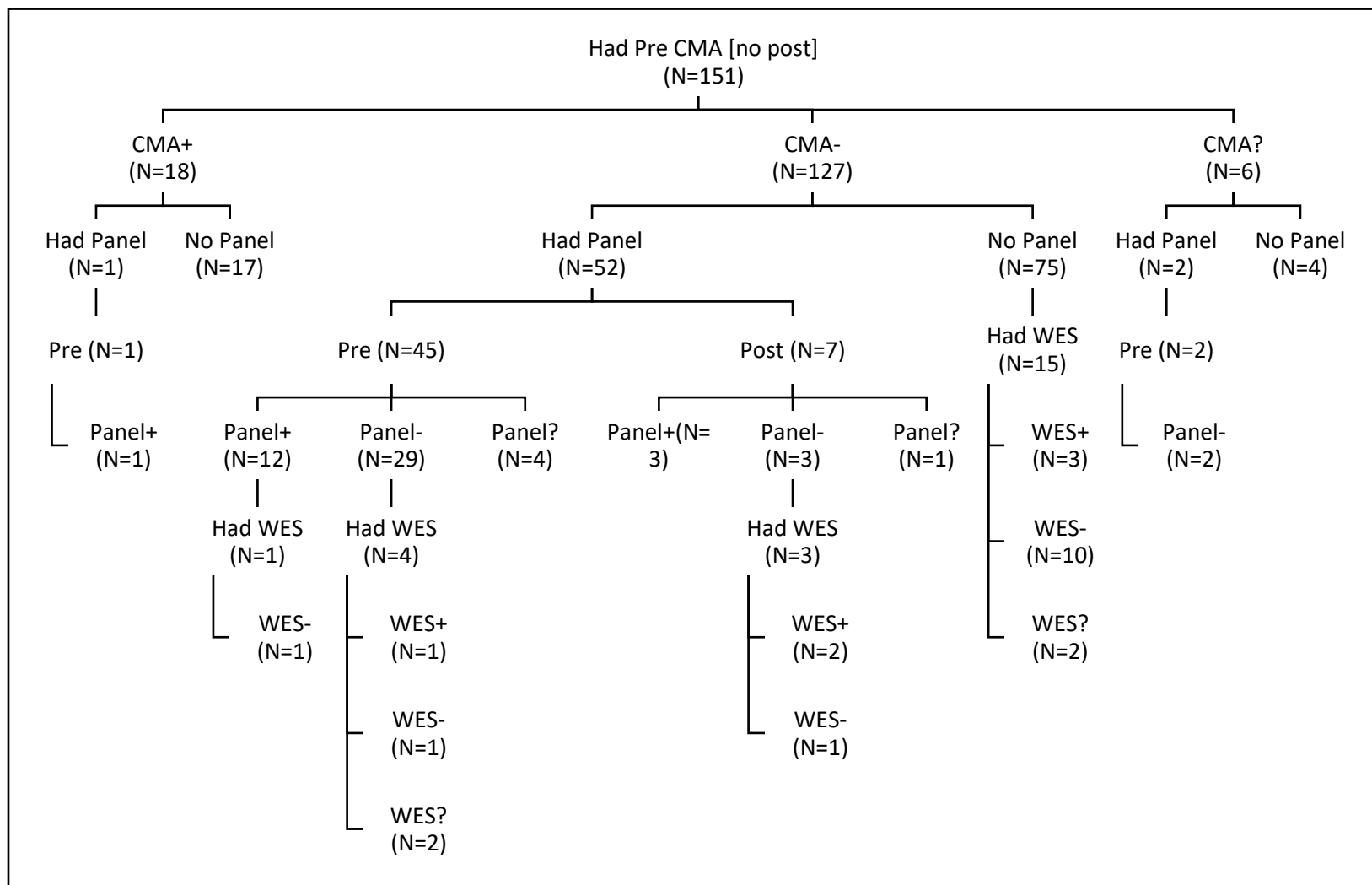


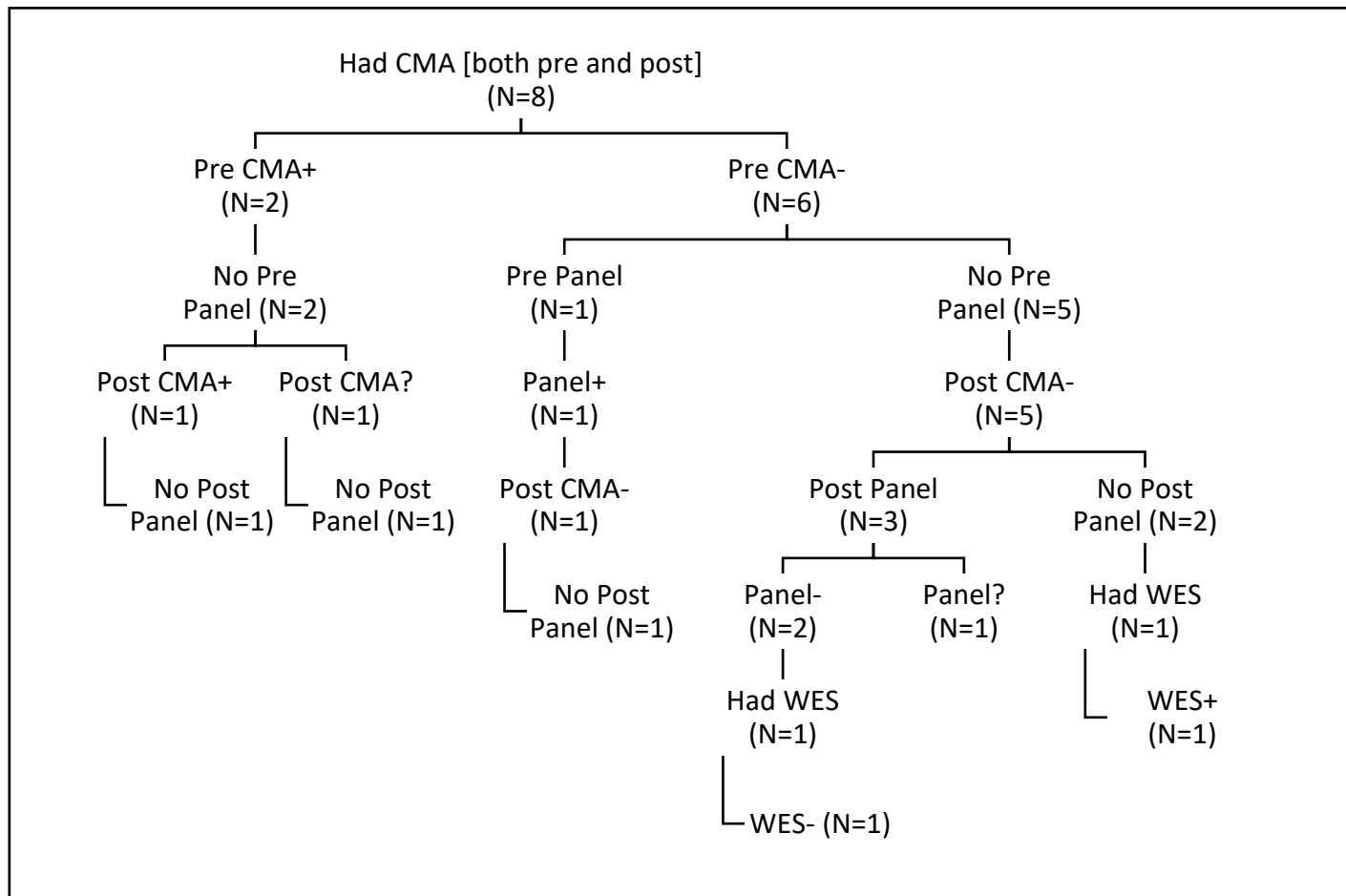
**Figure S1.** Summary of test results for cases who had CMA prenatal tests, CMA postnatal, Panel prenatal, Panel postnatal, and WES postnatal tests).



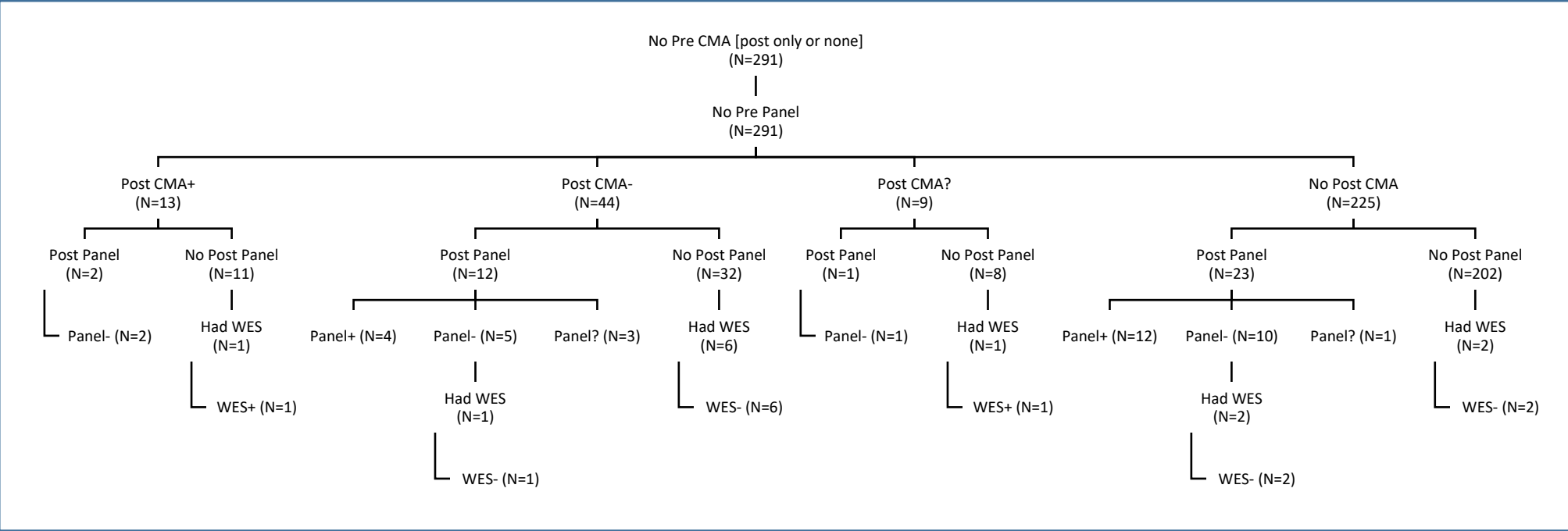
**Figure S2.** Distribution of fetal features by systems in relation to positive NGS-based tests (prenatal and postnatal gene panels and postnatal WES).



**Figure S3.** Clinical workflow for testing for patients who had prenatal CMA testing



**Figure S4.** Clinical workflow for patients who had CMA either postnatally or both prenatally and postnatally.



**Figure S5.** Clinical workflow for patient who did not have CMA or had it postnatally.