

MILLER-BUTTERWORTH ET AL.
SUPPLEMENTARY INFORMATION

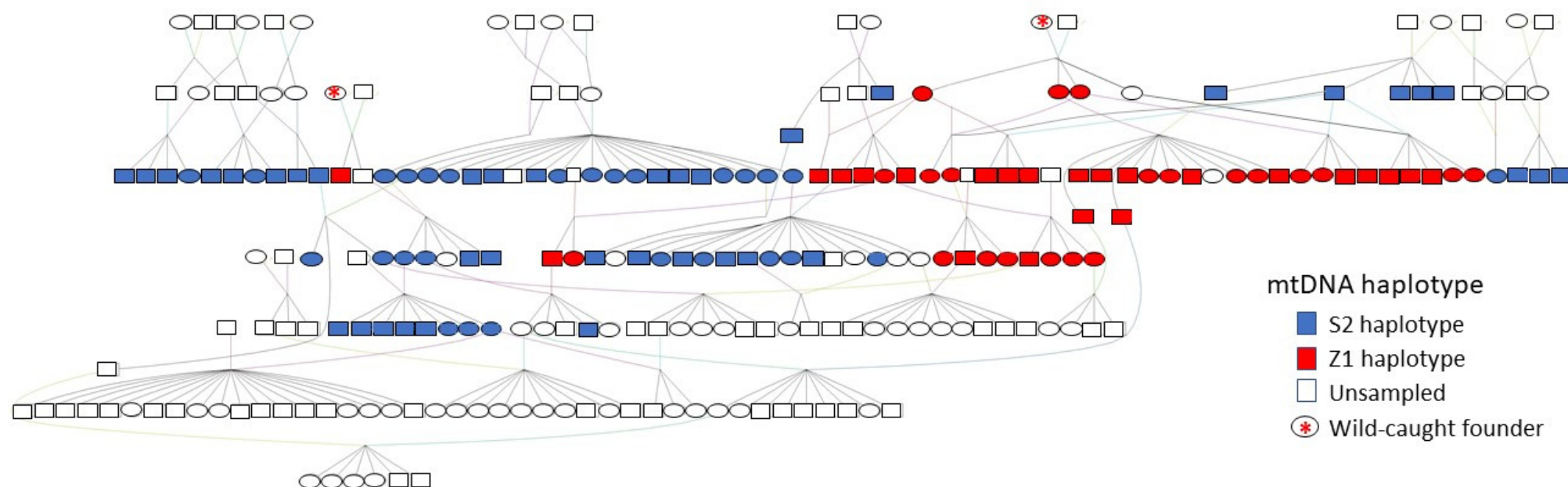


Figure S1. Pedigree of a subset of the North American African painted dog population, including sampled individuals ($n = 109$), their parents, grandparents and offspring. Squares represent males, ovals represent females. Colors indicate mitochondrial DNA haplotypes of sampled individuals (blue = S2, red = Z1) and illustrate that all but one individual with the Z1 haplotype are descended from a single wild-caught female.