

Figure S1. Control of morpholino-mediated *hspb8* knockdown effectiveness in 72 hpf zebrafish embryos. (A) The representative Western blot analysis of Hspb8 level, with β -actin used as a loading control. (B) The graph summarizes the Hspb8/ β -actin ratio. The Hspb8 quantity in the non-treated (NT) group was taken as 100%. The experiment was performed 3 times, $n = 10$. Asterisks (*) indicate significant differences, $p > 0.05$. Error bars show the standard deviation. NT – non-treated embryos, M1, and M2 – morphant groups.

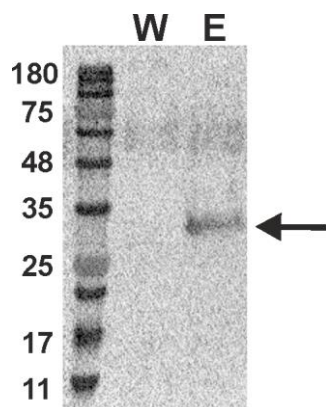


Figure S2: Control of the specificity of a commercially available monoclonal antibody raised against human Hspb8 used in this study for the detection of zebrafish Hspb8