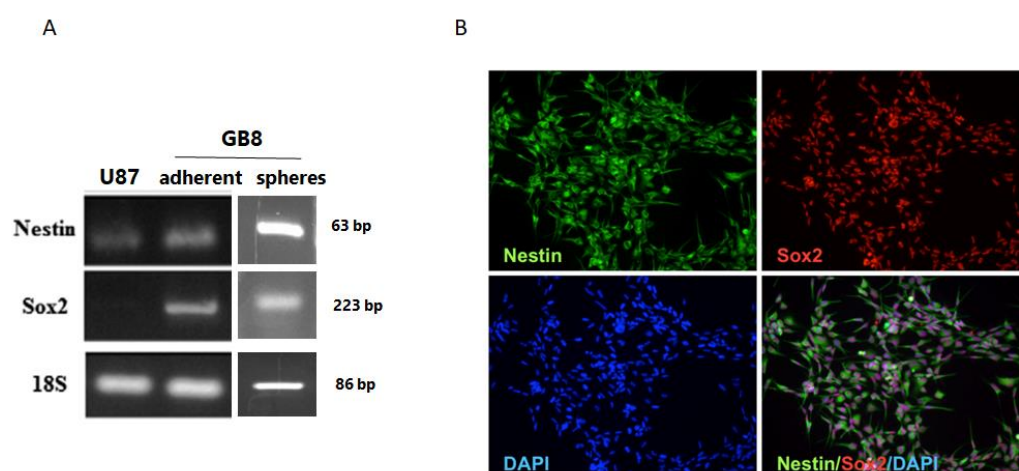


**Supplementary Figure 1.** Western blot analysis for M2 receptor expression in GB7 cells maintained in adherent and neurosphere conditions. Rat brain was used as positive control. Beta- actin was used as reference protein.



**Supplementary Figure 2.** Expression of stemness markers in GB8 cell line. **(A)** Analysis by RT-PCR of Nestin and Sox2 transcripts in GB8 cell line in adherent and sphere conditions. U87 stable cell line was used as negative control. 18 s was used as housekeeping gene. **(B)** Immunocytochemistry analysis of Nestin (green) and Sox2 (red) protein expression in GB8 cells. DAPI was used to counterstain the nuclei (100x)