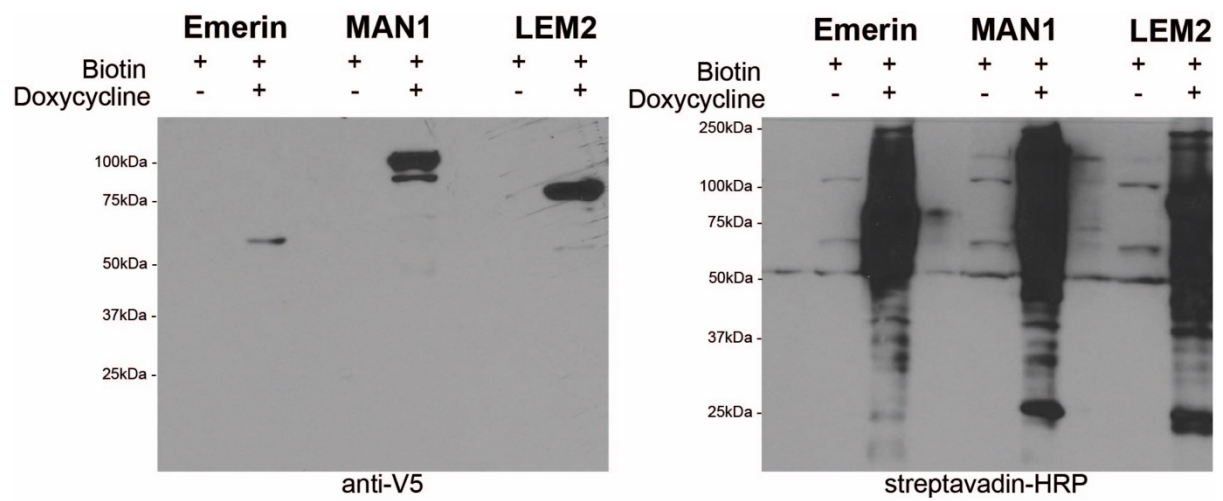


Supplementary Material:

Supplementary Table S1: Mass spectrometry data. Interactors detected in LEM2 (LEM2), MAN1 (LEMD3) emerlin (EMD) and GFP (GFP) BioID. A) Raw spectral count data MS analyses. B-H): High confidence (hc) (average probability (AvgP) of ≥ 0.45) interactors. Bait: BirA*-Emerin-V5 (EMD), BirA*-LEM2-V5 (LEM2) and BirA*-MAN1-V5 (LEMD3), Protein GI (NCBI): Protein GenInfo Identifier from (National Center for Biotechnology), PreyGene: Gene name, Spec: Spectral counts of each BioID experiment, SpecSum: sum of spectral counts, AvgSpec: average spectral counts per BioID experiment, NumRep: Number of BioID experiments, iProp: individual SAINT probabilities, ctrlCounts: spectral counts of all BioID controls, AvgP: average SAINT score (probability score which shows the average of all individual SAINT probabilities), MaxP: largest probability (iProb) (reports the largest probability of a bait-prey pair across all replicates), FDR: false discovery rate (post-hoc calculation of the false discovery rates of AvgP).



Supplementary Figure 1: Full unedited immunoblot for Figure 1D.