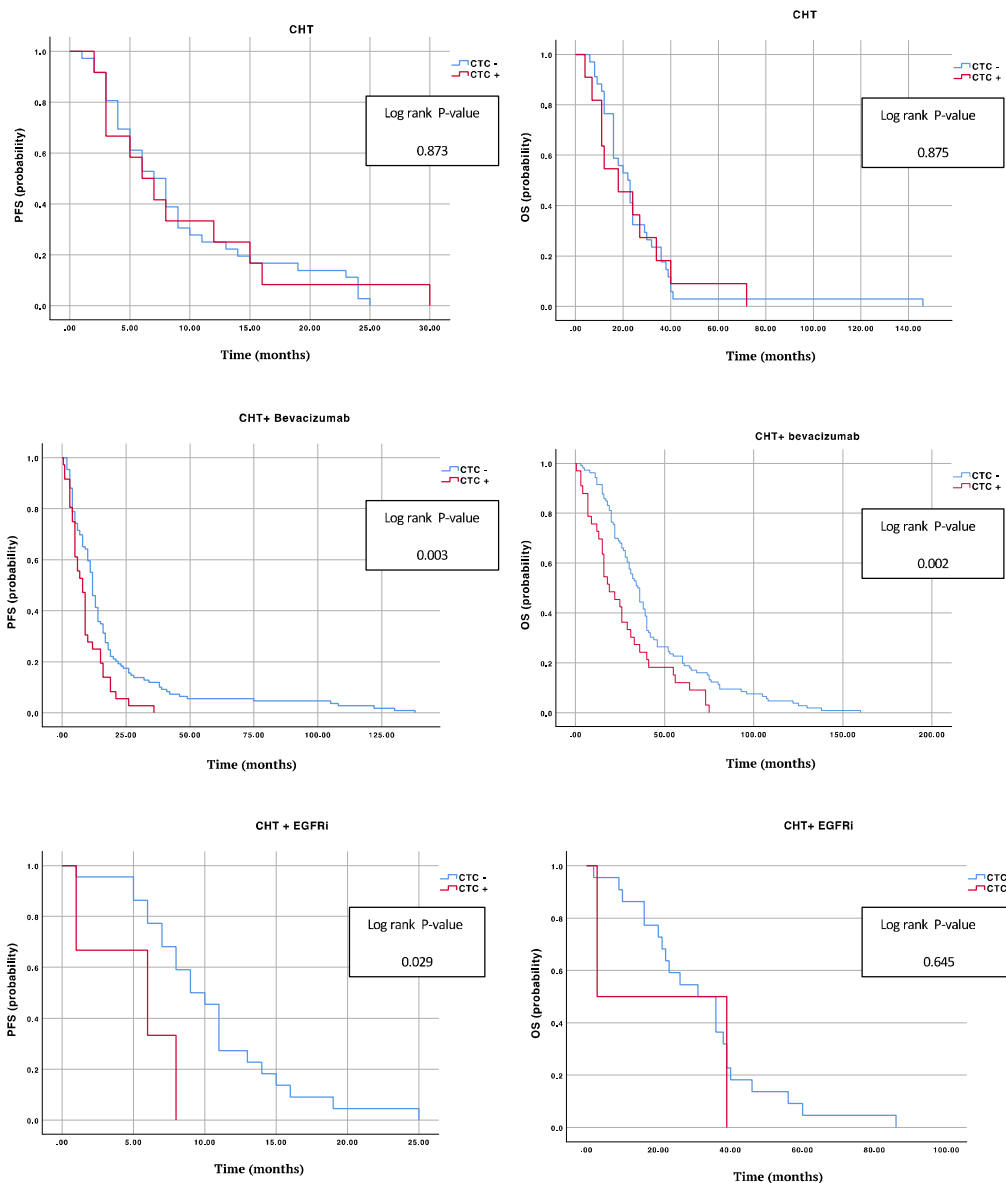


**Figure S1. Kaplan-Maier survival curves (probability) for PFS (left panels) and OS (right panels) of different primitive cancer location.** Comparison between CTCs negative and CTCs positive at baseline. Top panels: left side cancer (86 patients). Middle panels: right side cancer (45 patients). Bottom panels: rectal cancer (38 patients).



**Figure S2. Kaplan-Meier survival curves (probability) for PFS (left panels) and OS (right panels) in different treatments.** Comparison between CTCs negative and CTCs positive at baseline. Top panels: CHT therapy (48 patients). Middle panels: CHT + Bevacizumab therapy (145 patients). Bottom panels: CHT + EGFRi therapy (25 patients).