

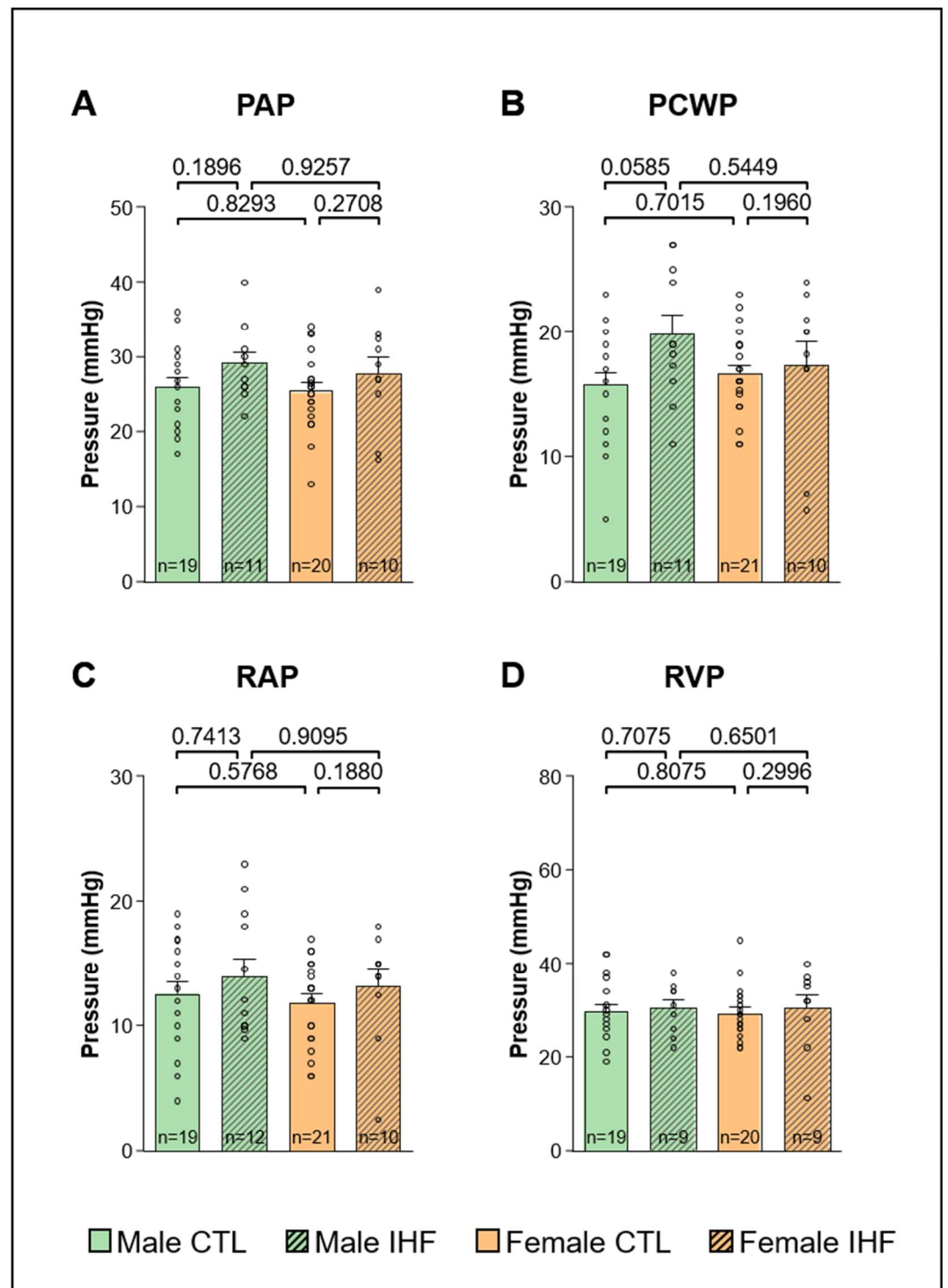
Effects of Sex on the Susceptibility for Atrial Fibrillation in Pigs with Ischemic Heart Failure

Valerie Pauly ^{1,2,3}, Julia Vlcek ^{1,3}, Zhihao Zhang ^{1,2,3}, Nora Hesse ^{1,2,3}, Ruibing Xia ^{1,2,3}, Julia Bauer ^{1,2,3}, Simone Loy ^{1,2,3}, Sarah Schneider ^{1,2,3}, Simone Renner ^{4,5,6,7}, Eckhard Wolf ^{4,5,6,7,8}, Stefan Kääb ^{1,2,4}, Dominik Schüttler ^{1,2,3}, Philipp Tomsits ^{1,2,3,†} and Sebastian Clauss ^{1,2,3,4,*,†}

- ¹ Grosshadern Campus, Department of Medicine I, University Hospital Munich, Ludwig-Maximilians-University (LMU), Marchioninistrasse 15, Munich, D-81377, Germany
- ² German Center for Cardiovascular Research (DZHK), Partner Site Munich, Munich Heart Alliance, Munich, D-81377, Germany
- ³ Institute of Surgical Research at the Walter-Brendel-Centre of Experimental Medicine, University Hospital Munich, LMU Munich, Marchioninistrasse 68, Munich, D-81377, Germany
- ⁴ Interfaculty Center for Endocrine and Cardiovascular Disease Network Modelling and Clinical Transfer (ICONLMU), LMU Munich, Feodor-Lynen-Strasse 19, Munich, D-81377, Germany
- ⁵ Chair for Molecular Animal Breeding and Biotechnology, Gene Center and Department of Veterinary Sciences, LMU Munich, Feodor-Lynen-Strasse 25, Munich, D-81377, Germany
- ⁶ Center for Innovative Medical Models (CiMM), Department of Veterinary Sciences, LMU Munich, Hackerstrasse 27, Oberschleissheim, D-85764, Germany
- ⁷ German Center for Diabetes Research (DZD), Ingolstädter Landstrasse 1, Neuherberg, D-85764, Germany
- ⁸ Laboratory for Functional Genome Analysis (LAFUGA), Gene Center, Grosshadern Campus, LMU Munich, Feodor-Lynen-Strasse 25, Munich, D-81377, Germany
- * Correspondence: sebastian.clauss@med.uni-muenchen.de
- † These authors contributed equally to this work.

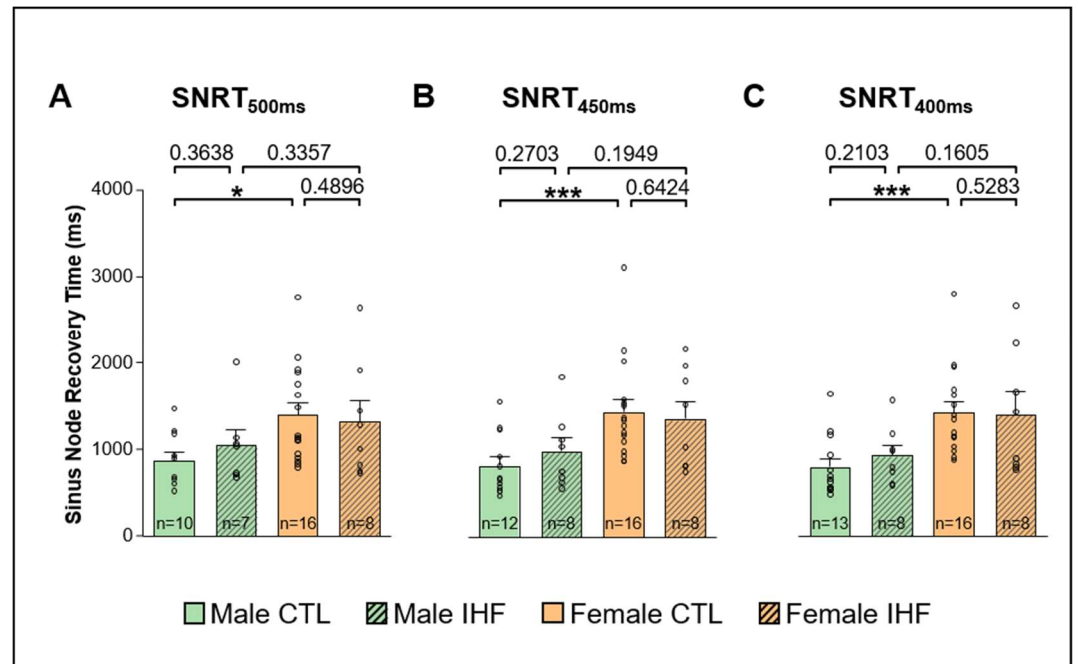
| Item | Page |
|--|------|
| Supplemental Figure S1: Hemodynamic Parameters | 2 |
| Supplemental Figure S2: Sinus Node Recovery Time (SNRT) | 3 |
| Supplemental Figure S3: Corrected Sinus Node Recovery Time (SNRT/BCL) in animals with and without Atrial Fibrillation (AF) | 4 |

Supplemental Figure S1: Hemodynamic Parameters



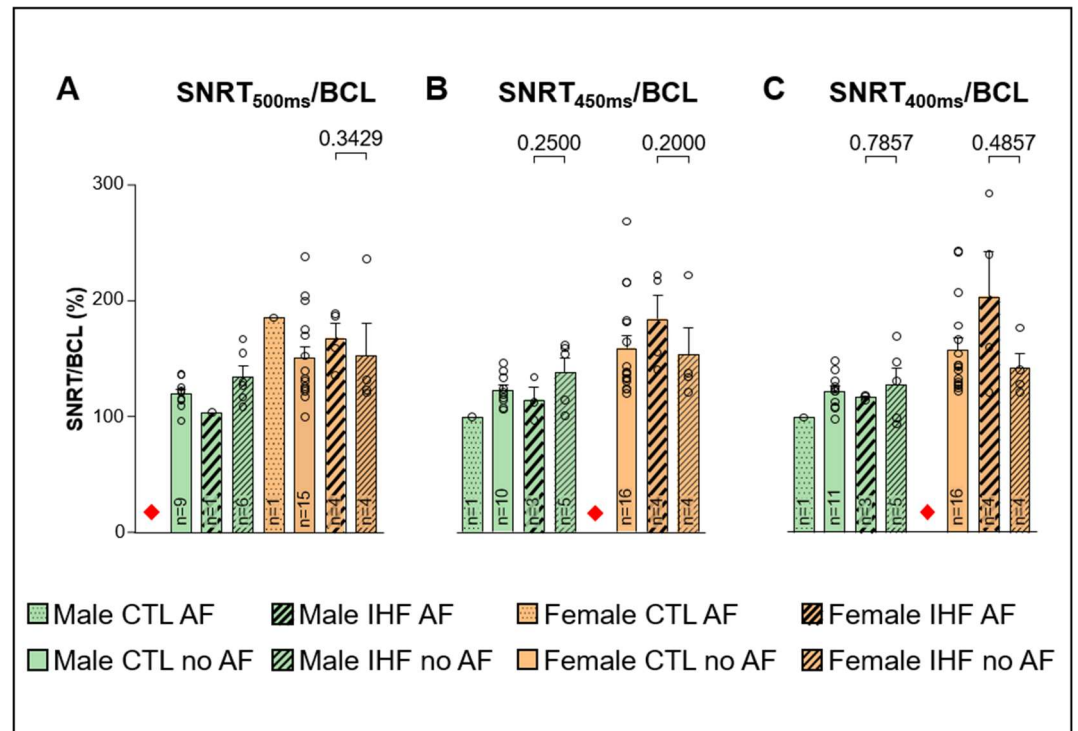
Supplementary Figure S1. Hemodynamic Measurements A, Systolic pulmonary arterial pressure (PAP). B, Systolic pulmonary capillary wedge pressure (PCWP). C, Systolic right atrial pressure (RAP). D, Systolic right ventricular pressure (RVP). CTL, control animals without ischemic heart failure; IHF, animals with ischemic heart failure. Graphs shown as MEAN+SEM, grey circles represent data of individual pigs. Mann-Whitney-U Test.

Supplemental Figure S2: Sinus Node Recovery Time (SNRT)



Supplementary Figure S2. Sinus Node Recovery Time (SNRT). A, SNRT at a pacing cycle length of 500 ms. B, SNRT at a pacing cycle length of 450 ms. C, SNRT at a pacing cycle length of 400 ms. CTL, control animals without ischemic heart failure; IHF, animals with ischemic heart failure. Bar graphs represent Mean+SEM, grey circles represent data of individual pigs. Mann-Whitney-U Test. *p<0.05; ***p<0.001.

Supplemental Figure S3: Corrected Sinus Node Recovery Time (SNRT/BCL) in animals with and without Atrial Fibrillation (AF)



Supplementary Figure S3. Corrected Sinus Node Recovery Time (SNRT/BCL) in animals with and without Atrial Fibrillation (AF). A, SNRT/BCL at a pacing cycle length of 500 ms. B, SNRT/BCL at a pacing cycle length of 450 ms. C, SNRT/BCL at a pacing cycle length of 400 ms. CTL, control animals without ischemic heart failure; IHF, animals with ischemic heart failure. Bar graphs represent Mean+SEM, grey circles represent data of individual pigs. In some subgroups no AF episode was observed, these groups are marked with red diamonds (n=0). Mann-Whitney-U Test where applicable.