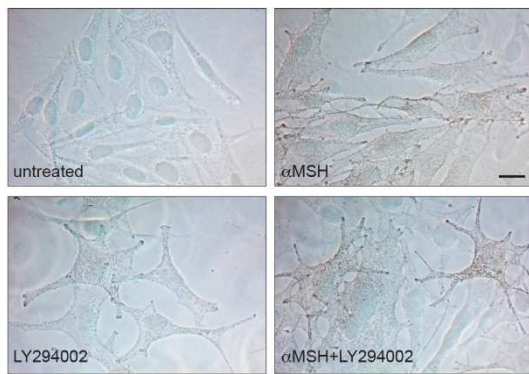
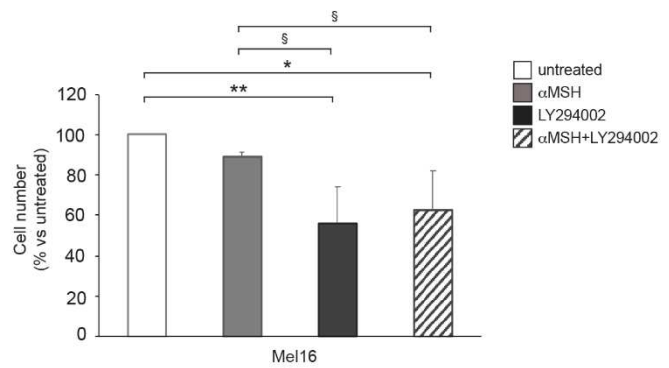
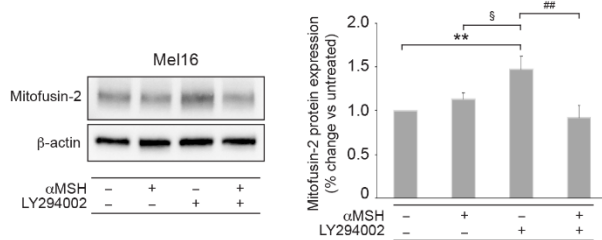


A**B**

Supplementary Figure S1. The α MSH-mediated PI3K/AKT pathway influences dendricity, pigmentation and cell proliferation of Mel16 melanoma cells. Phase contrast analysis (A) and cell count (B) of Mel16 cells treated with α MSH in the presence or absence of LY294002 for 48 hours. Scale bar: 20 μ m. * p <0.05, ** p <0.01 vs untreated; § p <0.05 vs α MSH.



Supplementary Figure S2. Western blot and densitometric analysis of Mitofusin-2 expression in Mel16 cells treated with α MSH, LY294002 and α MSH plus LY294002 for 24 hours. ** p <0.01 vs untreated; § p <0.05 vs α MSH; ## p <0.05 vs LY294002.