

## Supplementary Information

Life-Cycle-Dependent Toxicities of Mono- and Bifunctional Alkylating Agents in the 3R-Compliant Model Organism *C. elegans*

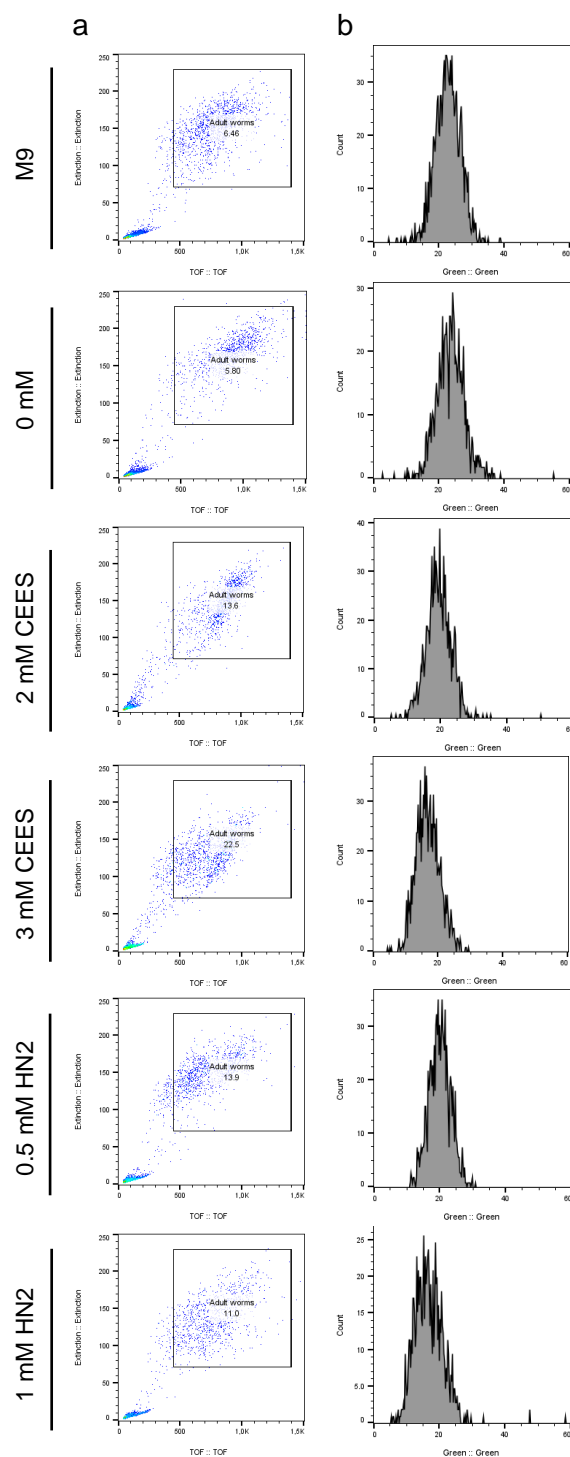
Joanna Ruszkiewicz 1,\*, Lisa Endig 1, Ebru Güver 1, Alexander Bürkle 1 and Aswin Mangerich 1,2,\*

1 Molecular Toxicology Group, Department of Biology, University of Konstanz, 78457 Konstanz, Germany;

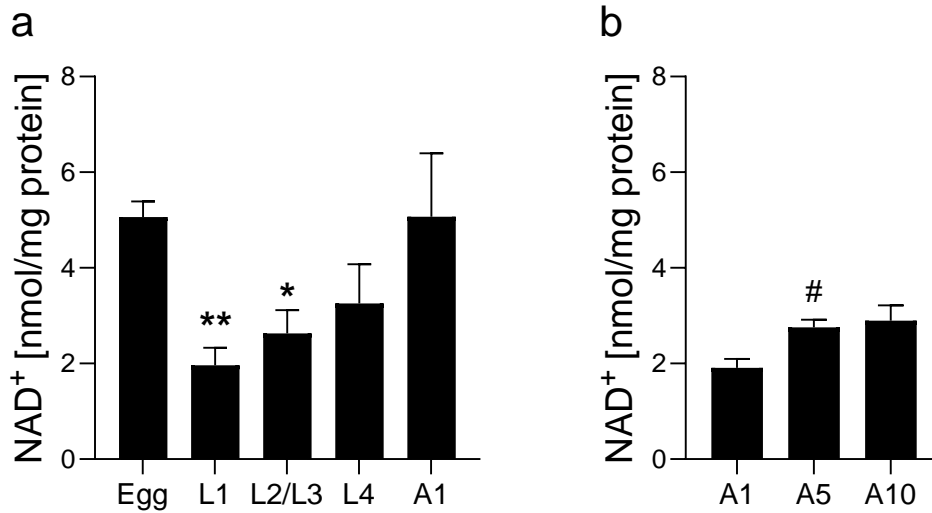
endiglisa@web.de (L.E.); ebruguver96@gmail.com (E.G.); alexander.buerkle@uni-konstanz.de (A.B.)

2 Nutritional Toxicology, Institute Nutritional Science, University of Potsdam, 14469 Potsdam, Germany

\* Correspondence: joanna.ruszkiewicz@uni-konstanz.de (J.R.); mangerich@uni-potsdam.de (A.M.)



**Figure S1:** The FlowJo™ analysis of fluorescence signal in BY200 (*dat-1p::GFP*) worms following exposure to alkylating agents. (a) Adult worms were selected based on their size (time of flight; TOF) and optical density (extinction; EXT). (b) For the selected population the mean green fluorescence signal was acquired.



**Figure S2:** NAD<sup>+</sup> levels in *C. elegans* at different life cycle stages. (a) NAD<sup>+</sup> was extracted from eggs (n=3 biological replicates) or synchronised WT (N2) worms grown on NGM plates until the life cycle stages: L1 (n=6 biological replicates), L2/L3 (n=8 biological replicates), L4 (n=9 biological replicates), A1 (n=7 biological replicates). (b) NAD<sup>+</sup> was extracted from WT (N2) worms grown on NGM + FUdR plates from L4 until respective days of adulthood: day 1 (A1), day 5 (A5), or day 10 (A10) (n=3 biological replicates). NAD<sup>+</sup> was measured with cycling assay and normalised to the total protein levels measured with BCA assay. Results were expressed as mean  $\pm$  SEM. For statistical analysis unpaired two-tailed t-tests were performed; \*p<0.05, \*\* p<0.01 vs Egg; # p<0.05 vs A1.