

Figure S1: Cell cytotoxicity assay. Bone marrow cells (BMCs) were treated with different concentrations of CQ for 48 h and MTT assay was performed for evaluating the cytotoxic effects of CQ.

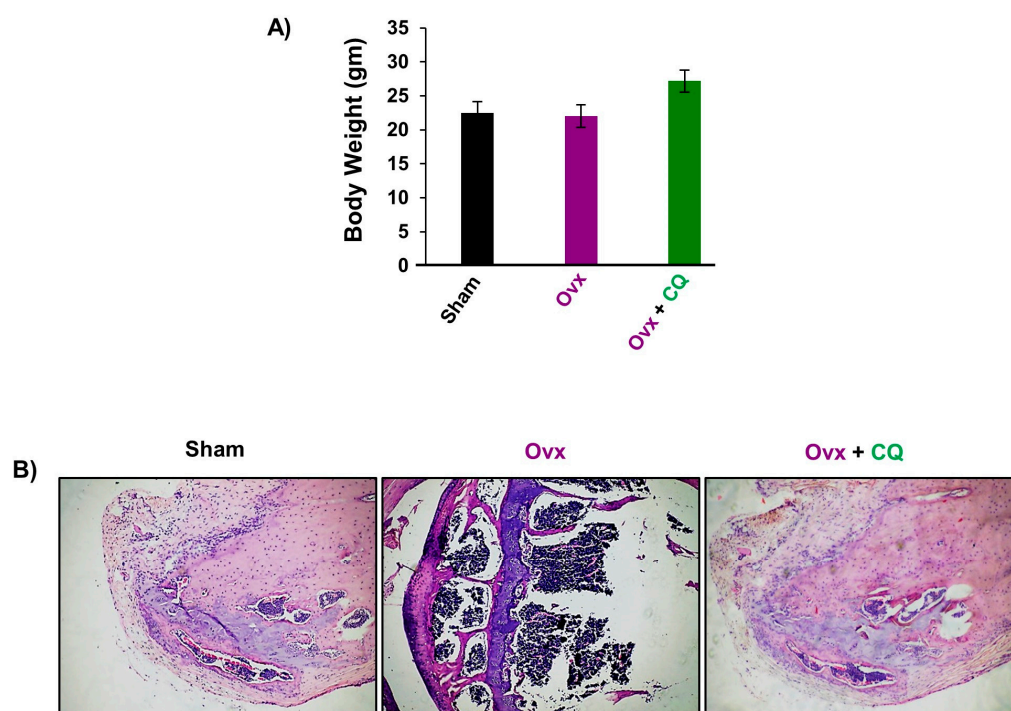


Figure S2: Histological features of bone specimens: A) Body weight. **B)** Representative H & E staining of femoral bone sections from each group at 10 X Magnification.

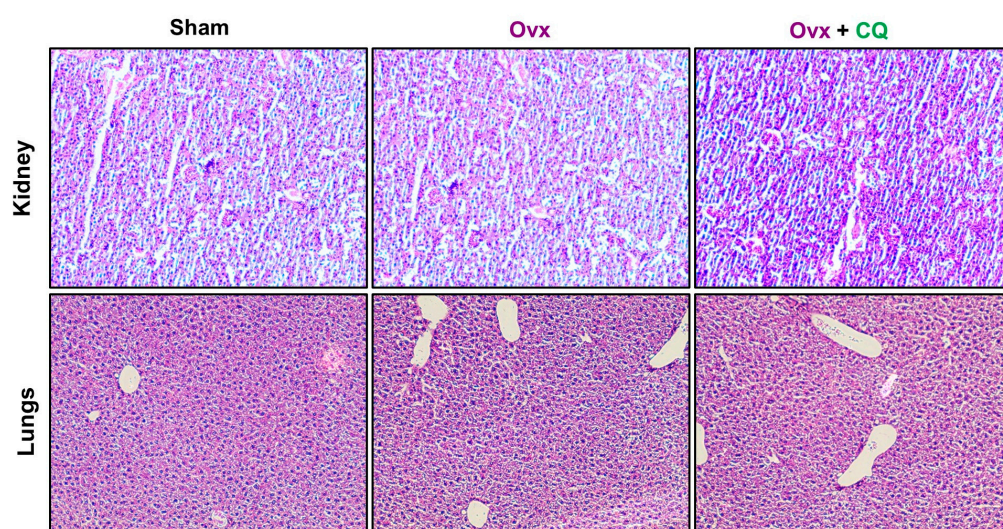


Figure S3: Histopathological analysis of kidney and lung tissues: H & E staining of kidney and lung tissue sections in mice of all three groups.

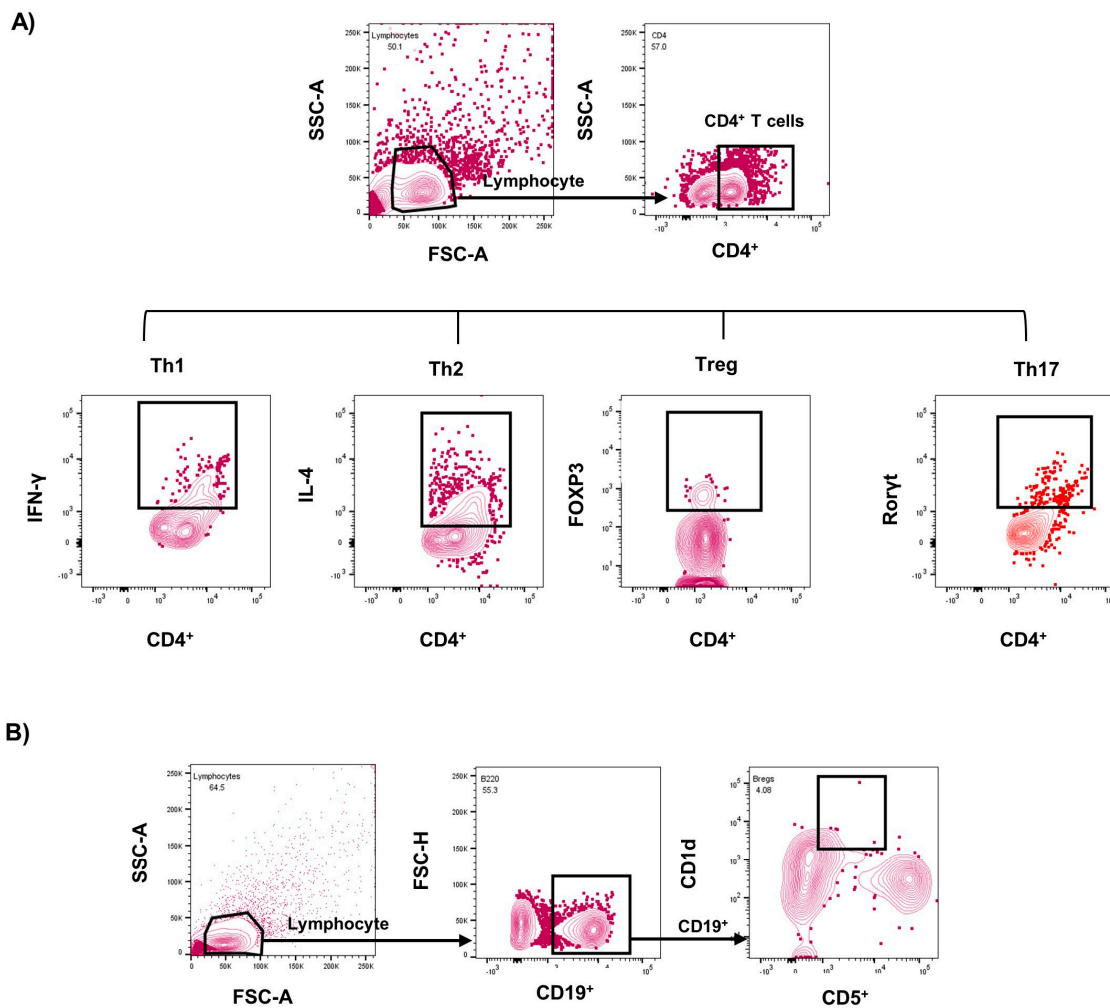


Figure S4: Gating strategy followed for flow data analysis: A) Gating strategy for Th1, Th2, Th17 and Tregs and **B)** Gating strategy for Bregs.