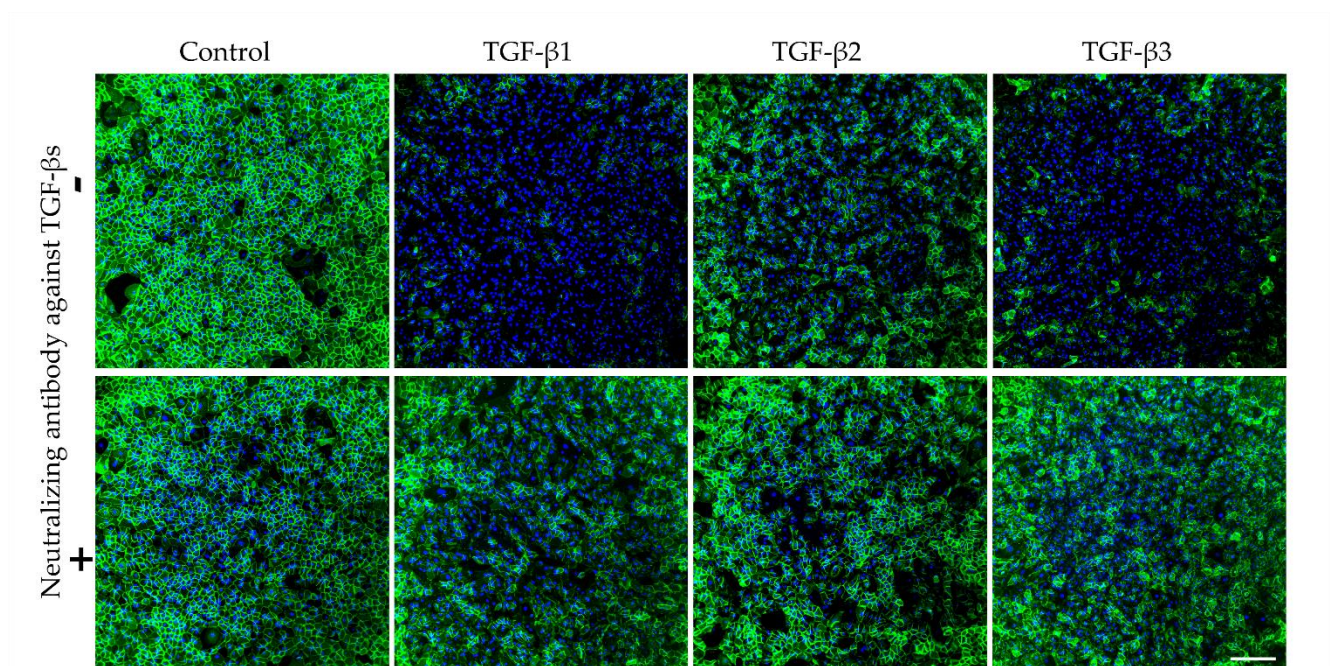


Supplementary Data S1. EndMT analysis process based on cell shape.



Supplementary Data S2. IF of NCAM on hCECs in SFM-based medium supplemented with or without TGF- β 1, 2, or 3 and in the presence or absence of neutralizing antibody against TGF- β s. Cell lateral membranes were stained in green by IF by NCAM and the nuclei in blue by DAPI. Pictures were obtained using an epifluorescence microscope using the same parameters for all pictures (intensity of light source, exposure time, contrast, resolution). Experiment was repeated twice using two different cell cultures. The objective was X10, scale bar=200 μ m.