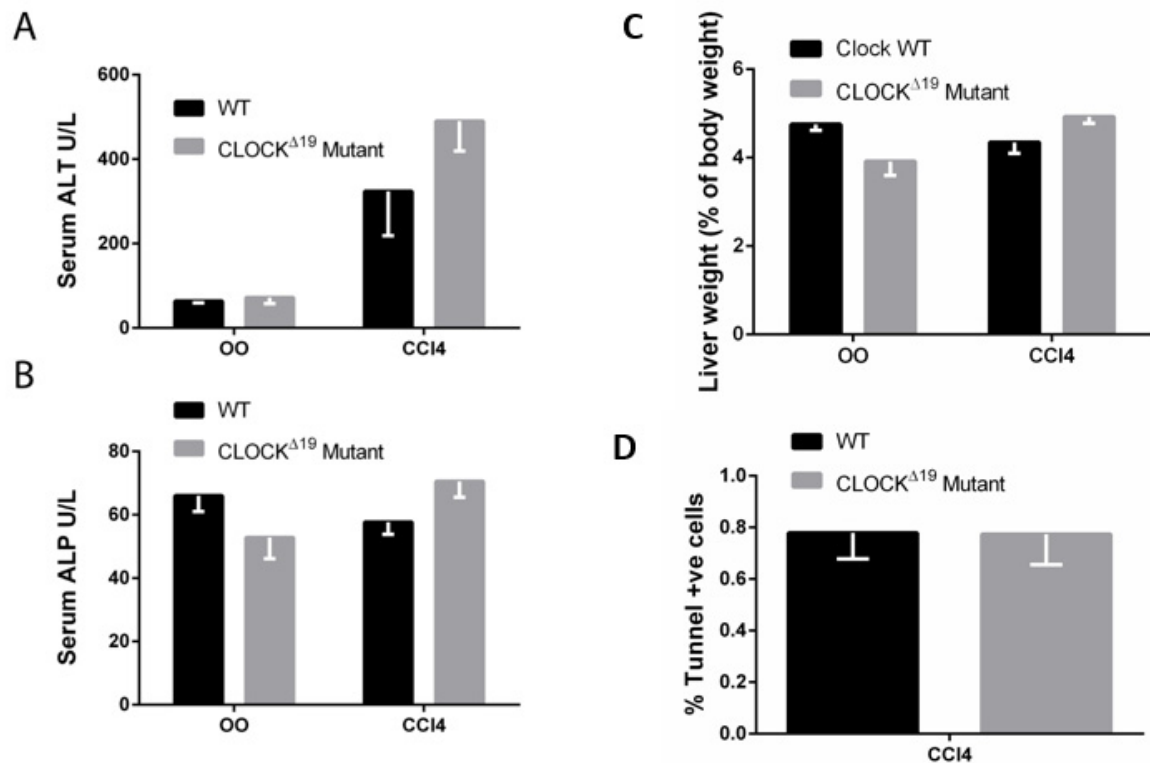
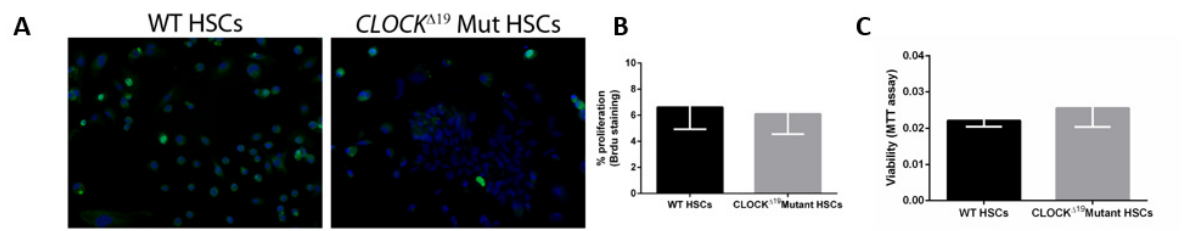


Supplementary Figures for Circadian disruption primes myofibroblasts for accelerated activation as a mechanism underpinning fibrotic progression in non-alcoholic fatty liver disease



Supplementary Figure S1. Liver weights and function tests after CCl₄ treatment No significant differences between the WT and $CLOCK^{\Delta 19}$ are evident in (A) serum LFT, (B) Serum ALP, (C) liver weight to body weight ratios or (D) TUNEL staining. Error bars represent mean \pm SD, n=3-5.



Supplementary Figure S2. BRDU incorporation and MTT assay No significant difference between WT and *CLOCK*^{Δ19} was observed in proliferation via BRDU (A,B) or viability via MTT assay. Error bars represent mean +/- SD. N=3