



# Studio CAPIRE

*Coronary Atherosclerosis in outlier subjects:  
Protective and Individual Risk factor Evaluation*

Ultimo aggiornamento 14 gennaio 2022

## Supplementary Material

**Table S1. Characteristics of the study cohort according with risk factor (RF) categorization.**

Parameter	Low RF (n=322)	Multiple RF (n=222)	p-value
Age, years	59.3 ± 8.6	60.2 ± 7.9	0.210
Sex, male	195 (60.6)	123 (55.4)	0.231
BMI, kg/m <sup>2</sup>	25.8 ± 4.0	27.8 ± 4.3	1.5x10 <sup>-7</sup>
Family history of CAD, yes	32 (9.9)	137 (61.7)	1.2x10 <sup>-37</sup>
Hypertension, yes	91 (28.3)	196 (88.3)	3.2x10 <sup>-43</sup>
Current smoker, yes	23 (7.1)	110 (49.5)	1.2x10 <sup>-29</sup>
Diabetes, yes	0 (0.0)	68 (30.6)	2.5x10 <sup>-26</sup>
Systolic BP, mmHg	126.7 ± 14.6	131.9 ± 15.8	7.9x10 <sup>-5</sup>
Antiplatelets, yes	56 (17.4)	89 (40.1%)	4.0x10 <sup>-9</sup>
Statins, yes	29 (9.0)	141 (63.5%)	2.0x10 <sup>-41</sup>
Total-c, mg/dL	202.1 ± 41.5	210.9 ± 47.9	0.127
LDL-c, mg/dL	126.4 ± 39.1	132.7 ± 44.5	0.237
HDL-c, mg/dL	58.6 ± 20.1	51.3 ± 15.2	0.003
Triglycerides, mg/dL	91 [65 – 135]	139 [97 – 207]	7.1x10 <sup>-8</sup>
Serum creatinine, mg/dL	0.86 ± 0.18	0.86 ± 0.19	0.907
OPN, ng/mL	20.3 [14.8 – 27.0]	19.6 [14.5 – 27.5]	0.844
MPO, ng/mL	99.3 [56.6 – 186.3]	140.8 [78.2 – 283.6]	4.0x10 <sup>-6</sup>
Resistin, ng/mL	13.3 [9.4 – 19.0]	13.9 [10.3 – 20.3]	0.101

Continuous data are presented as mean ±SD or median [interquartile range], according with their distribution. Categorical data are presented as absolute (relative) frequencies. P-value for one-way ANOVA, Mann-Whitney or  $\chi^2$  tests, as appropriate. RF: risk factors; BMI: body mass index; CAD: coronary artery disease; BP: blood pressure; total-c: total cholesterol; LDL-c: low-density lipoprotein cholesterol; HDL-c: high-density lipoprotein cholesterol; OPN: osteopontin; MPO: myeloperoxidase.

**Table S2. Association between serum levels of osteopontin (OPN) and coronary atherosclerotic plaque extent/severity in coronary artery disease (CAD) groups (low/high risk factors).**

	OPN (ng/mL)	p-value
<b>CAD extent</b>		
<7 segments affected (n=91)	22.2 [16.6 – 29.7]	0.859
>7 segments affected (n=102)	22.8 [14.6 – 29.8]	
<b>CAD severity</b>		
No segment >50% affected (n=182)	22.6 [15.7 – 29.8]	0.210
Any segment >50% affected (n=10)	18.1 [10.5 – 29.8]	
<b>Plaque composition</b>		
>50% non-calcified (n=11)	23.4 [13.8 – 30.3]	0.265
>50% calcified (n=130)	23.0 [16.7 – 30.6]	
Mixed (n=53)	19.9 [13.9 – 27.8]	

P-value for one-way ANOVA or Mann-Whitney tests, as appropriate.

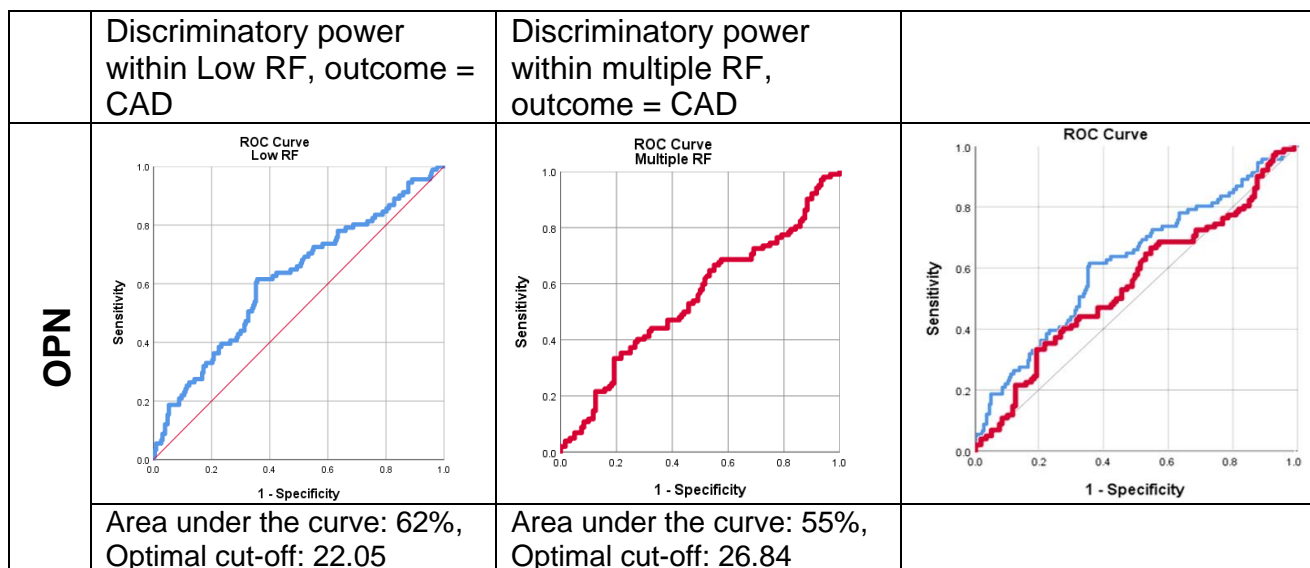


# Studio CAPIRE

*Coronary Atherosclerosis in outlier subjects:  
Protective and Individual Risk factor Evaluation*

Ultimo aggiornamento 14 gennaio 2022

**Figure S1. ROC curve analysis testing the predictive role of osteopontin (OPN), toward the presence of coronary artery disease according with risk factor categorization.**



**Figure S1. ROC curve analyses.** ROC curve analyses testing the accuracy of osteopontin (OPN) toward the presence of coronary artery disease (CAD) according with risk factor (RF) categorization.



# Studio CAPIRE

*Coronary Atherosclerosis in outlier subjects:  
Protective and Individual Risk factor Evaluation*

*Ultimo aggiornamento 14 gennaio 2022*

## **Appendix**

### **Steering Committee**

A. Maseri † (Chairman; Firenze), D. Andreini (Milano), S. Berti (Massa), M. Canestrari (Fano), G. Casolo (Lido di Camaiore), D. Gabrielli (Roma), R. Latini (Milano), M. Magnoni (Milano), P. Marraccini (Pisa), T. Moccetti (Lugano), M.G. Modena (Modena)

Coordinating Center: A.P. Maggioni, M. Gorini, F. Bianchini, I. Cangioli, A. Lorimer (Centro Studi ANMCO Firenze)

Imaging Core Laboratory: D. Andreini, G. Pontone, E. Conte (Centro Cardiologico Monzino Milano)

Centralized biobank and biomarker core laboratory: D. Novelli, F. Gaspari, S. Ferrari, A. Cannata, N. Stucchi, M. Fois, R. Bernasconi, G. Balconi (Istituto Mario Negri, Milano and Bergamo), T. Vago, T. Letizia (Ospedale Luigi Sacco, Milano), B. Bottazzi, R. Leone (Istituto Clinico Humanitas, Rozzano).

Central ECG Reading: I. Suliman (Centro Studi ANMCO, Firenze)

Psychologists CRF Group: M. Sommaruga † (IRCCS Salvatore Maugeri Unità di Psicologia, Milano), P. Gremigni (Dipartimento di Psicologia Università di Bologna)

### **Participating Centers and Investigators**

Fano, Ospedale S Croce (R. Olivieri); Fermo, Ospedale Civile A. Murri (L. Pennacchietti); Lido di Camaiore, Nuovo Ospedale Versilia (M. Magnacca); Lugano, Cardiocentro Ticino (M.G. Rossi, E. Pasotti, T. Moccetti); Massa, FTGM - Stabilimento di Massa (A. Clemente); Milano, Centro Cardiologico Monzino (D. Andreini, G. Pontone, S. Mushtaq); Modena, Ospedale Policlinico (E. Mauro, G. Boriani); Parma, AOU. di Parma (F. Pigazzani); Pisa, AOU Pisana (L. Faggioni); Pisa, FTGM - Stabilimento di Pisa (M. Ciardetti); Udine, AOU SM della Misericordia (M. Puppato)