

Supplementary Materials:

Regulation of Eye Determination and Regionalization in the Spider *Parasteatoda tepidariorum*

Luis Baudouin-Gonzalez ^{1,*}, Amber Harper ², Alistair P. McGregor ^{2,3} and Lauren Sumner-Rooney ⁴

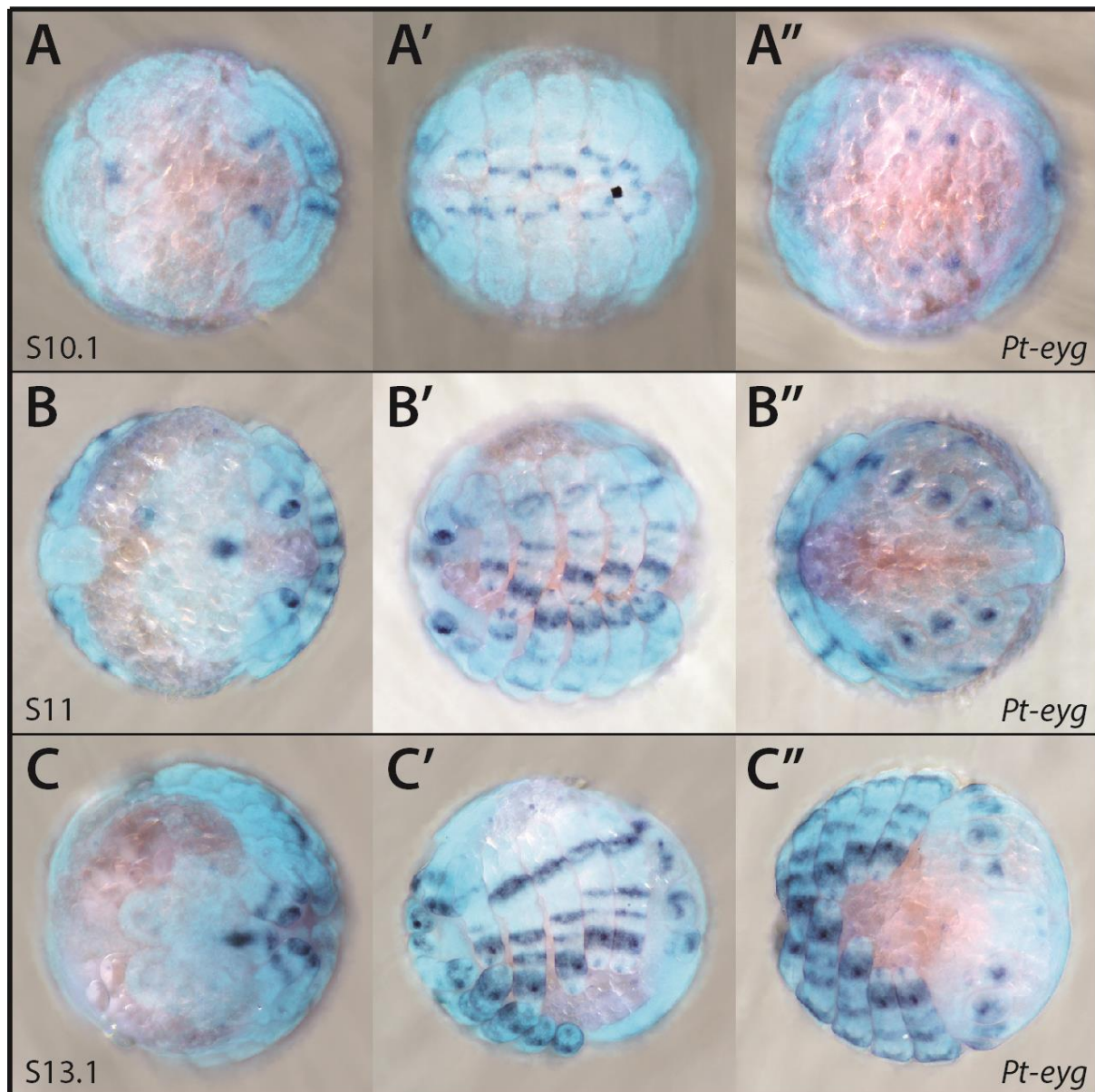


Figure S1. Expression of *eyegone* in *Parasteatoda tepidariorum* embryos. Colorimetric ISH showing *Pt-eyg* expression in stage 10.1 (A-A''), 11 (B-B'') and 13.1 (C-C''). No expression was detected in or around the developing eye primordia.

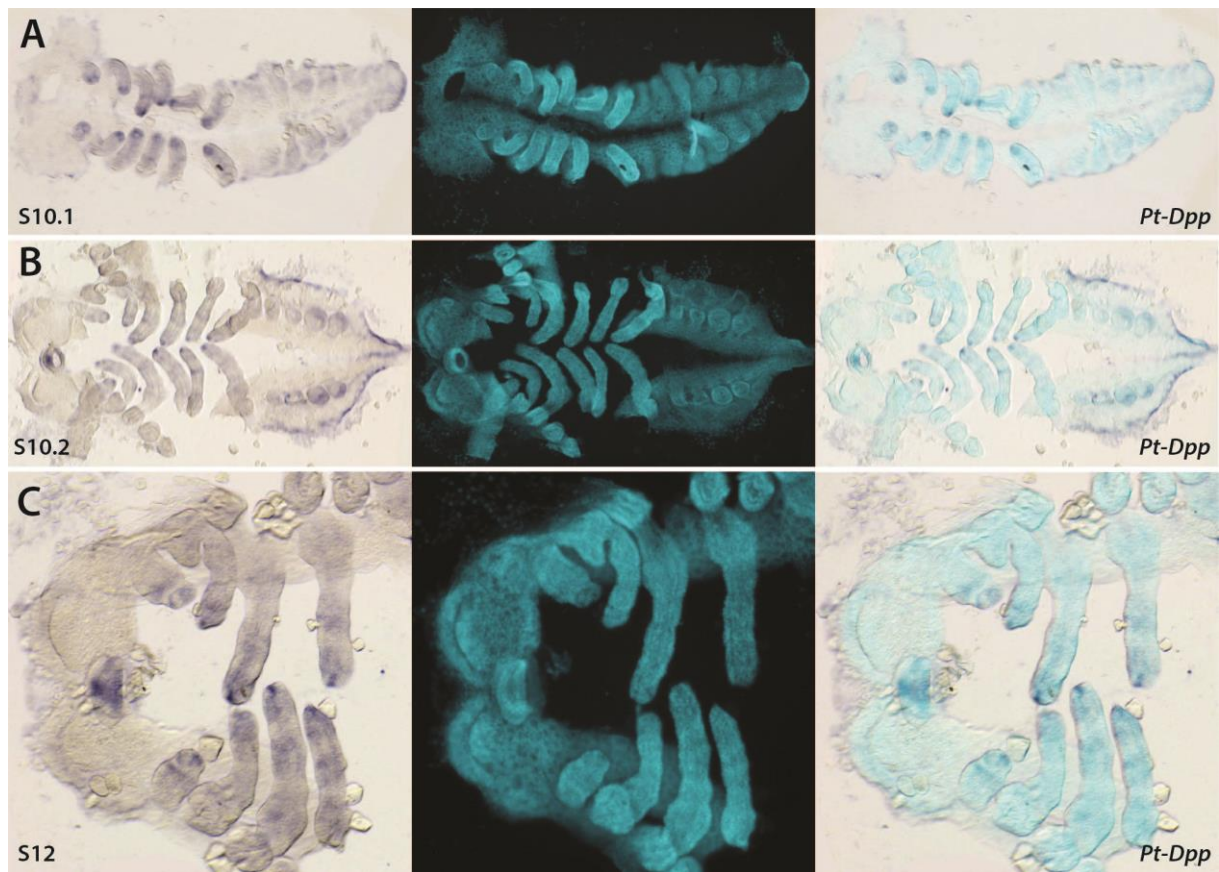


Figure S2. Expression of *dpp* in *Parasteatoda tepidariorum* embryos. Colorimetric ISH showing *Pt-dpp* expression in stage 10.1 (A-A''), 10.2 (B-B'') and 12 (C-C''). No expression was detected in or around the developing eye primordia.

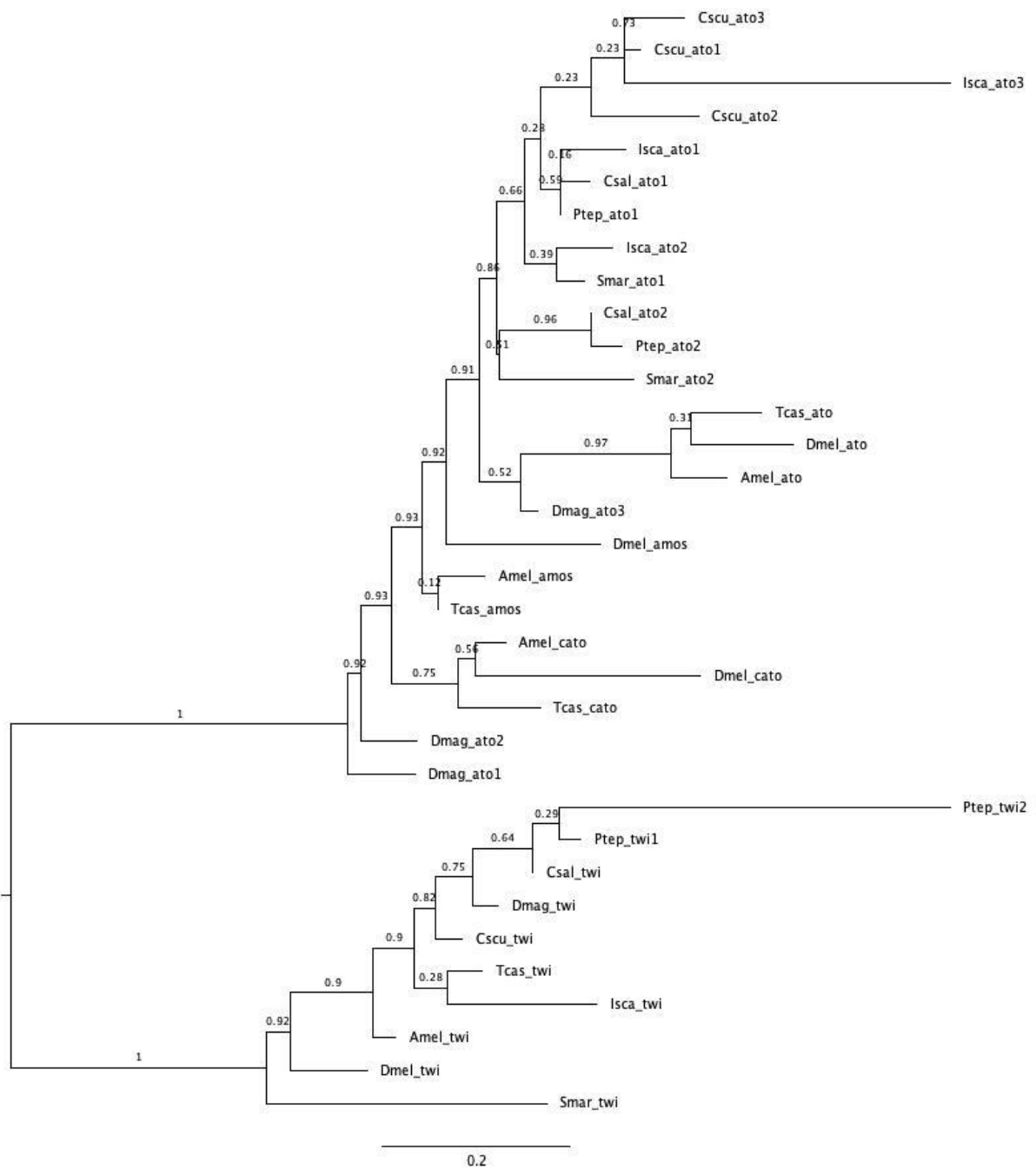


Figure S3. Maximum likelihood phylogeny of arthropod *ato* and *twist* genes, including orthologs identified in *Parasteatoda tepidariorum*. Two copies of *ato* and two potential copies of *twist* were recovered from *P. tepidariorum*.