

Supplementary Material

Cell Wall Properties Determine Genotype-Specific Response to Cold in *Miscanthus* × *giganteus* Plants

Anna Bilaska-Kos ^{1,*}, Aleksandra Pietrusińska ², Szymon Suski ³, Agnieszka Niedziela ¹, Anna M. Linkiewicz ^{4,5}, Włodzimierz Majtkowski ⁶, Grzegorz Żurek ⁷ and Jacek Zebrowski ⁸

¹ Department of Biochemistry and Biotechnology, Plant Breeding and Acclimatization Institute—National Research Institute, Radzików, 05-870 Błonie, Poland; a.niedziela@ihar.edu.pl

² National Centre for Plant Genetic Resources, Plant Breeding and Acclimatization Institute—National Research Institute, Radzików, 05-870 Błonie, Poland; a.pietrusinska@ihar.edu.pl

³ Laboratory of Electron Microscopy, Nencki Institute of Experimental Biology of Polish Academy of Sciences, 3 Pasteur, 02-093 Warsaw, Poland; soosky@o2.pl

⁴ Molecular Biology and Genetics Department, Institute of Biological Sciences, Faculty of Biology and Environmental Sciences, Cardinal Stefan Wyszyński University, Wóycickiego 1/3, 01-938 Warsaw, Poland; a.linkiewicz@uksw.edu.pl

⁵ Genetically Modified Organisms Controlling Laboratory, Plant Breeding and Acclimatization Institute—National Research Institute, Radzików, 05-870 Błonie, Poland

⁶ Botanical Garden, National Centre for Plant Genetic Resources, Plant Breeding and Acclimatization Institute—National Research Institute, Jeździecka 5, 85-867 Bydgoszcz, Poland; w.majtkowski@ihar.edu.pl

⁷ Department of Bioenergetics, Quality Analysis and Seed Science, Plant Breeding and Acclimatization Institute—National Research Institute, Radzików, 05-870 Błonie, Poland; g.zurek@ihar.edu.pl

⁸ Institute of Biology and Biotechnology, University of Rzeszów, Aleja Rejtana 16c, 35-959 Rzeszów, Poland; jaze28@interia.pl

* Correspondence: a.bilaska@ihar.edu.pl; Tel.: +48-22-733-45-41

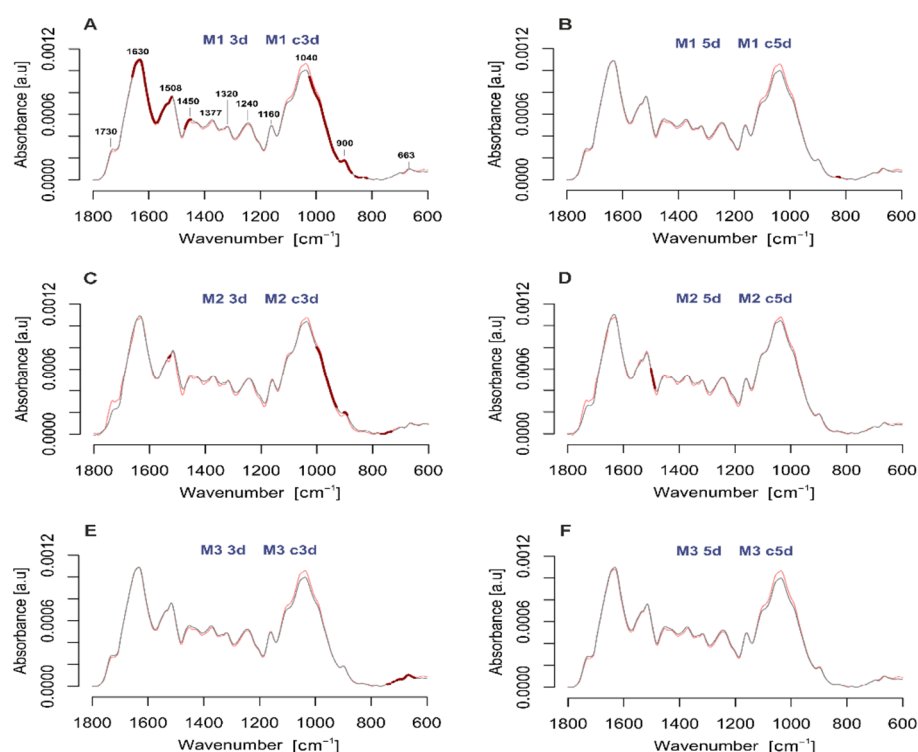


Figure S1. Mean infrared spectra collected from cell wall material for the control (grey) and chilled (red) plants of three *Miscanthus* genotypes. Comparisons were made for each of *M. giganteus* “Bydgoszcz”, M1 (A,B), *M. giganteus* “Radzików”, M2 (C,D), *M. giganteus* “Majdan Sieniawski”, M3

(E,F) between the control (c3d, c5d) and chilled plants (3d, 5d). Spectral regions indicating significant changes as a result of chilling are depicted by thick red lines. The significance ($p < 0.05$) of the treatment was derived from planned contrasts based on a three-way ANOVA model and was calculated for each wavenumber within 1800-600 cm^{-1} region. The "holm" correction was used for the multiplicity adjustment.