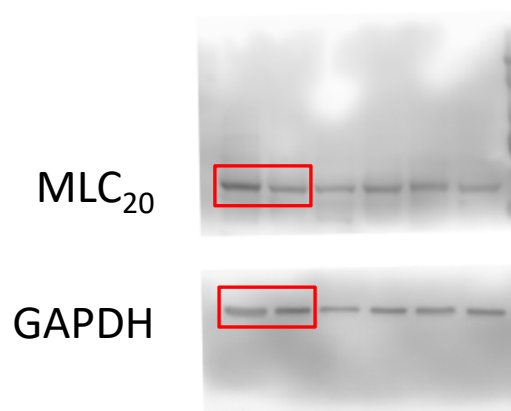
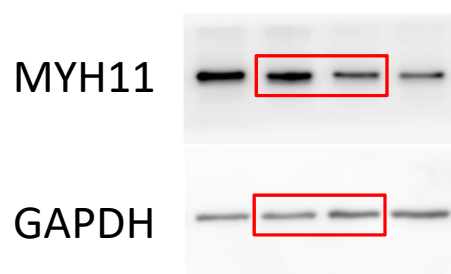


Figure S1. Interaction of integrin $\beta 1$ with MLCK. Input and MLCK immunoprecipitates of human airway smooth muscle cells were assessed by immunoblotting. Integrin $\beta 1$ is found in MLCK immunoprecipitates. Blots are representative of three identical experiments.

Original blots for Figure 2A



Original blots for Figure 2C



Original blots for Figure 6A

