

Supplementary Materials

Suppl Figure 1

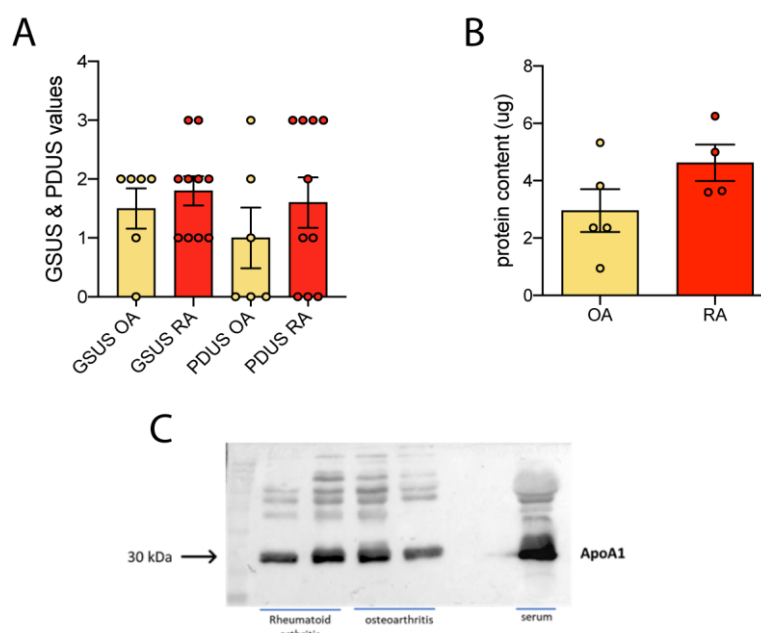


Figure S1. (A) PDUS and GSUS values of OA- and RA-patients indicate comparable level of inflammation between the two groups. (B) Protein content detected by micro BCA protein assay is higher in RA- respect to OA-extracted EVs, even if it is not statistically significant (Mann Whitney test, ns). (C)

Suppl Figure 2

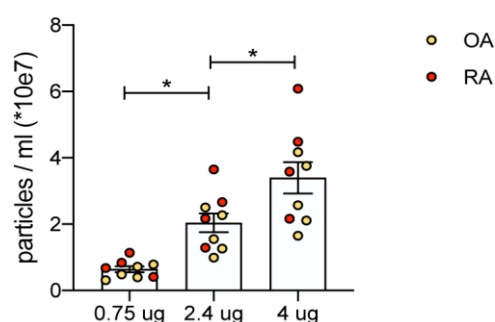


Figure S2. Graph representing the total amount of EVs corresponding to 0.75 - 2.4 - 4 μ g of protein; coherently, the number of particles / ml increases as the concentration is augmented. (Ordinary one-way ANOVA followed by Tukey's multiple comparison test, **** $p < 0.0001$; 0.75 μ g=9, 2.4 μ g=9, 4 μ g=9). OA data are presented in yellow; RA data are presented in red.