

Figure S1. Antibody costaining of ARL13B and DAPI confirmed the specific targeting of cilia in ARL13B-mCherry;Centrin2-GFP mouse tracheal tissue. White arrows point to motile cilia. Blue, DAPI. Green, Centrin2-GFP. Red, ARL13B-mCherry. White, ARL13B antibody staining. Scale bar, 10 μ m.

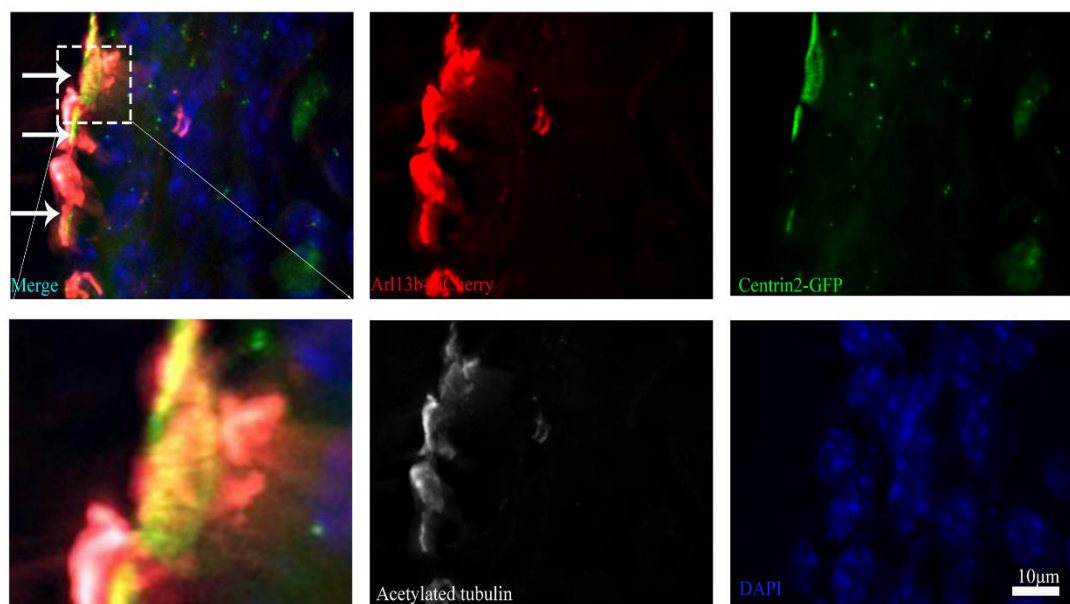


Figure S2. Immunostaining for acetylated tubulin in the trachea confirmed that ARL13B is a reliable marker for cilia in the ARL13B-mCherry;Centrin2-GFP mouse model. White arrows point to motile cilia. Blue, DAPI. Green, Centrin2-GFP. Red, ARL13B-mCherry. White, acetylated tubulin antibody staining. Scale bar, 10 μ m.

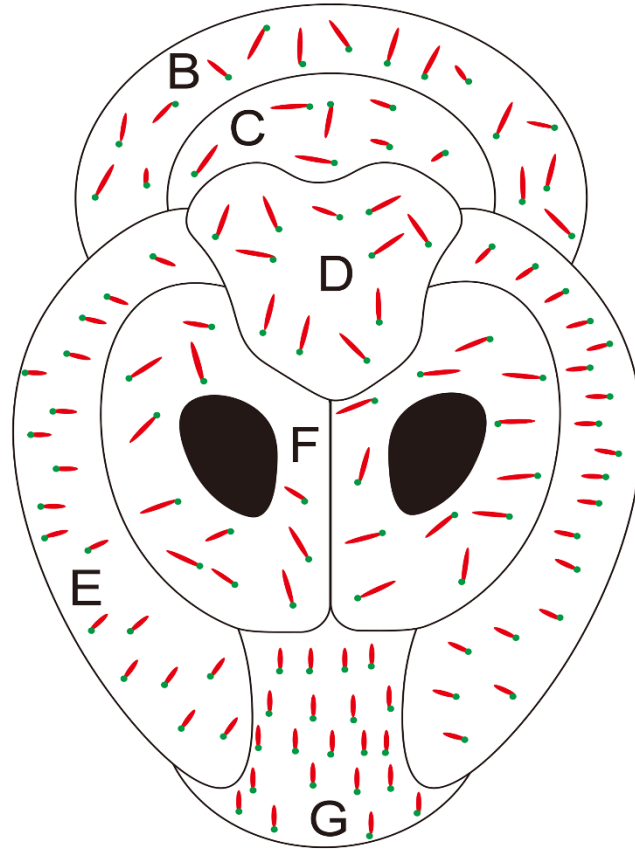


Figure S3. Schematic diagram of cilium distribution in the mouse brain. (A) Sagittal sections of the brain, (B) cerebellar cortex, (C) cerebellum, (D) midbrain, and (E–G) cerebral cortex. Green, Centrin2-GFP. Red, ARL13B-mCherry.

Vedio S1 The representative vedio to show the cilia rotation in nucleus puplposus tissues

Bule DAPI. Red, ARL13B-mCherry.

Vedio S2 The representative vedio to show the cilia rotation in nucleus puplposus tissues

Red, ARL13B-mCherry.