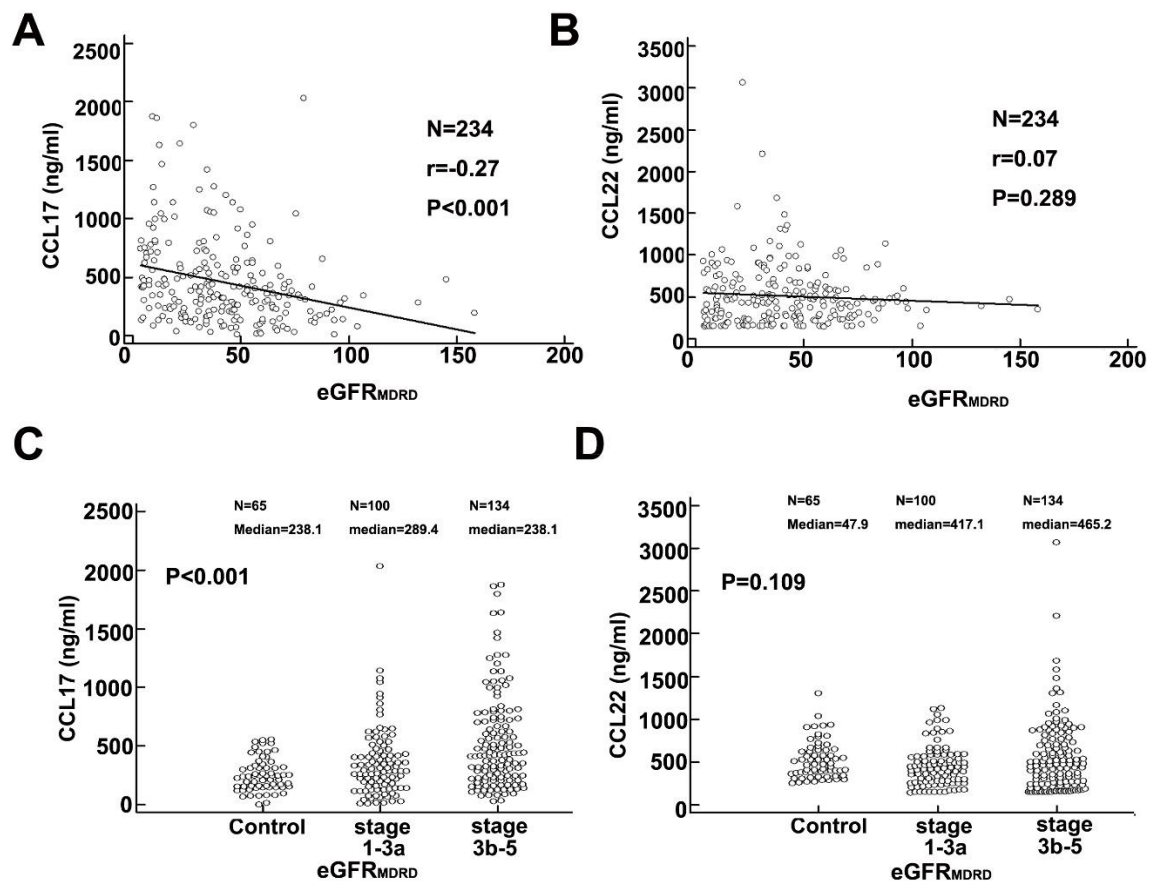


# C-C Motif Chemokine Ligand-17 as a Novel Biomarker and Regulator of Epithelial Mesenchymal Transition in Renal Fibrogenesis

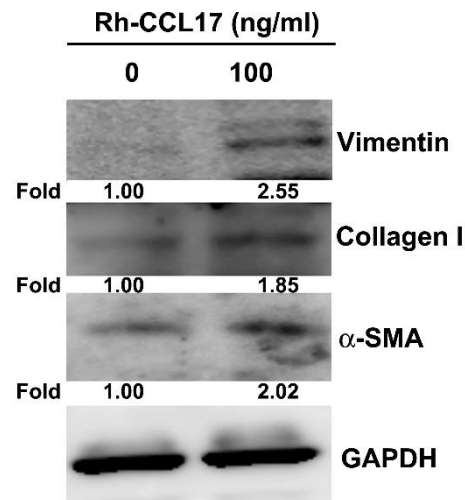
Yi-Hsien Hsieh, Wen-Chien Wang, Tung-Wei Hung, Chu-Che Lee and Jen-Pi Tsai

## Supplementary Figure 1



**Supplementary Figure S1.** Upregulation of CCL17 expression with loss of renal function. Correlation analysis of CCL17 (A) or CCL22 (B) with eGFR<sub>MDRD</sub> for all CKD patients. Comparison of mean serum values of CCL17 (C) and CCL22 (D) between the normal population (Control), CKD stage 1–3a and stage 3b–5 with eGFR<sub>MDRD</sub> for all CKD patients.

## Supplementary Figure 2



**Supplementary Figure S2.** Rh-CCL17 induce the fibrotic- and EMT-related proteins in human HK2 cells. Rh-CCL17 treated with or without Rh-CCL17 (100 ng/mL) for 48 h and extracted total HK2 cell lysates to determine the protein expression of CCL17, collagen I,  $\alpha$ -SMA, and vimentin. GAPDH was used to normalize protein loading.

## Supplementary Table 1

**Table S1.** Baseline characteristic of eGFR<sub>MDRD</sub> for normal population and CKD patients.

		Early CKD			Advanced CKD		
Number	65	11	45	44	53	35	46
Age (year)	50.17±10.70	60.91±12.36	64.02±12.14	71.68±10.77	72.60±10.77	74.03±9.17	71.72±13.73
Female/Male	35/30	4/7	14/31	13/31	19/34	18/17	26/20
BUN (mg/dl)	9.09±2.73	11.45±3.93	15.51±5.00	21.11±7.26	26.11±7.40	41.37±18.30	69.43±22.83
Cre (mg/dl)	0.75±0.13	0.72±0.11	1.04±0.16	1.35±0.19	1.80±0.29	2.65±0.56	6.60±2.65
eGFR <sub>MDRD</sub> (ml/min)	102.69±10.46	110.77±23.33	71.32±8.28	51.47±4.47	36.39±4.05	22.64±4.39	8.88±3.42
CCL17 (ng/ml)	250.01±138.08	222.15±133.50	344.25±327.77	397.04±345.65	475.48±348.55	444.67±408.68	671.90±431.10
	238.10	218	300.30	293.30	368.30	285.27	590.00
	(149.56-321.72)	(128.55-304.73)	(148.15-405.45)	(175.83-578.12)	(206.34-631.46)	(171.48-535.12)	(410.90-809.67)
CCL22 (ng/ml)	519.03±217.67	410.06±116.44	4565.65±247.88	437.25±243.61	633.40±440.78	553.24±544.87	463.60±282.65

Abbreviation: BUN, blood urea nitrogen; Cre, creatinine; eGFR, estimated glomerular filtration rate; early CKD indicated CKD stage 1 to 3a; advanced CKD indicated CKD stage 3b to 5; MDRD, Modification of Diet in Renal Disease (MDRD)