

Table S1. PrimePCRddPCR Gene Expression Probe Assays, specific for ddPCR.

Target Genes	Acronym	ID assay Probe
<i>Taste receptor, type 2, member 3</i>	<i>TAS2R3</i>	dHsaCPE5028212
<i>Taste receptor, type 2, member 4</i>	<i>TAS2R4</i>	dHsaCPE5028214
<i>Taste receptor, type 2, member 14</i>	<i>TAS2R14</i>	dHsaCPE5043852
<i>Taste receptor, type 2, member 19</i>	<i>TAS2R19</i>	dHsaCPE5027704
<i>Taste receptor, type 2, member 43</i>	<i>TAS2R43</i>	dHsaCPE5192389
<i>G protein subunit alpha transducin 1</i>	<i>GNAT1</i>	dHsaCPE5025595
<i>G protein subunit alpha transducin 3</i>	<i>GNAT3</i>	dHsaCPE5043953
<i>Phosphodiesterase 4A, cAMP-specific</i>	<i>PDE4A</i>	dHsaCPE5046851
<i>Phospholipase C, beta 2</i>	<i>PLCB2</i>	dHsaCPE5047389
<i>Transient receptor potential channel, subfamily M, member 5</i>	<i>TRPM5</i>	dHsaCPE5032805
<i>Signal Transducer And Activator Of Transcription 5A</i>	<i>STAT5A</i>	dHsaCPE5026004
<i>Signal Transducer And Activator Of Transcription 5b</i>	<i>STAT5B</i>	dRnoCPE5167406
<i>Peroxisome proliferator-activated receptor gamma</i>	<i>PPARγ</i>	dHsaCPE5036470
<i>GA Binding Protein Transcription Factor Subunit Alpha</i>	<i>GABPa</i>	dHsaEG5016715
<i>Androgen Receptor</i>	<i>AR</i>	dHsaCPE54526914
Reference Genes	Acronym	ID assay Probe
<i>Hypoxanthine-Guanine Phosphoribosyl Transferase 1</i>	<i>HPRT1</i>	dHsaCPE5192871
<i>Tata Binding Protein</i>	<i>TBP</i>	dHsaCPE5058363
<i>Peptidylprolyl isomerase B (cyclophilin B)</i>	<i>PPIB</i>	dHsaCPE5055049

Table S2. List of antibodies used in this study.

Antigen	Donor species	Dilution		Manufacturer	RRID
		IF	WB		
Primary antibodies					
β-Actin	Mouse	/	1:2000	Bio-Rad Laboratories	AB_2223350
α-Gustducin	Rabbit	1:100	1:500	Santa Cruz	AB_673678
α-Transducin	Rabbit	1:100	1:500	Santa Cruz	AB_2279097
TAS2R3	Rabbit	1:100	1:500	Thermo Fisher Scientific	AB_2556263
TAS2R4	Rabbit	1:100	1:500	Thermo Fisher Scientific	AB_2201090
TAS2R14	Rabbit	1:100	1:500	Novusbio Laboratories	AB_11053160
TAS2R19	Rabbit	1:300	1:1000	Thermo Fisher Scientific	AB_962285
TAS2R43	Rabbit	1:300	1:1000	Thermo Fisher Scientific	AB_2815963
Secondary antibodies					
Anti-Rabbit-IgG FITC	Goat	1:2000	-	Bio-Rad Laboratories	AB_1163662
Anti-Mouse-IgG HRP	Goat	-	1:8000	Bio-Rad Laboratories	AB_609692
Anti-Rabbit-IgG HRP	Goat	-	1:8000	Bio-Rad Laboratories	AB_1102634

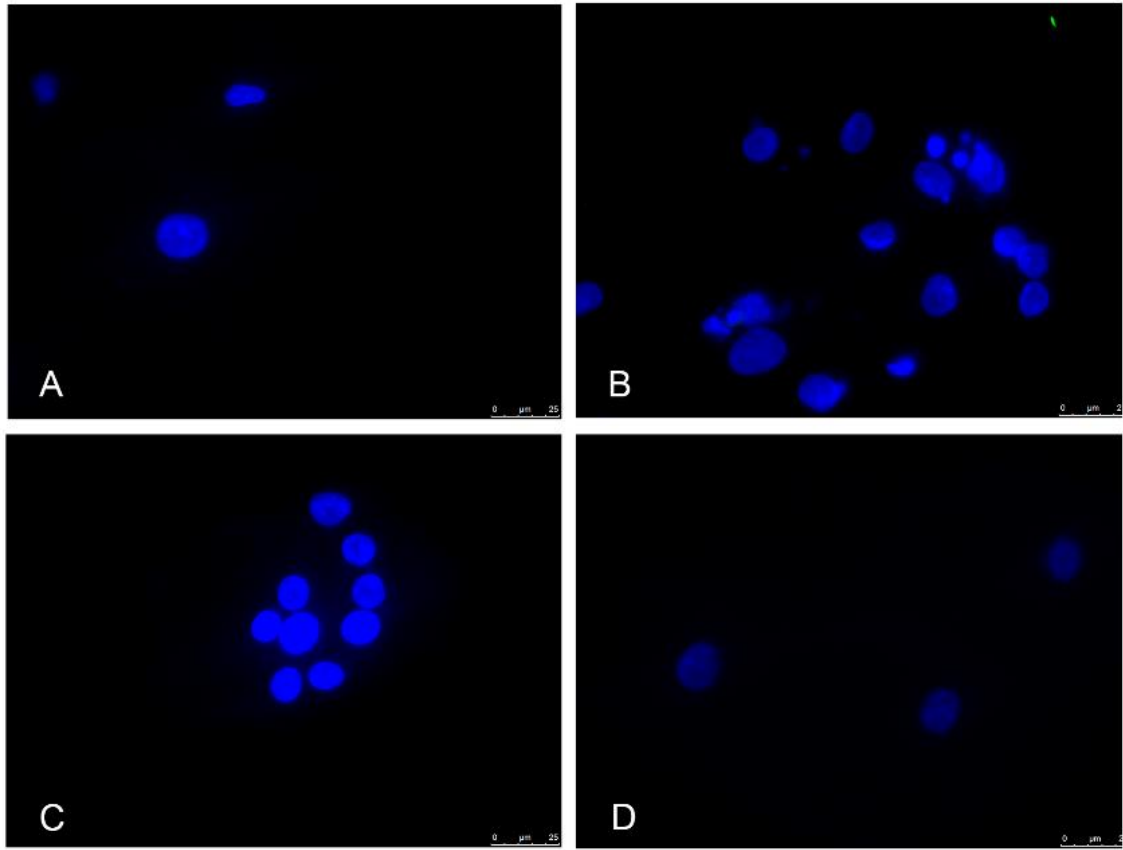


Figure S1. Representative images of negative controls for the immunofluorescent staining of GCs (A,C) and CCs (B,D) showed in Figure 4 and Figure 7. Bar = 25µm.