

«PAL-mediated differential response of tomato (*Solanum lycopersicum* L.) cultivars with different stress tolerance to treatment with low-molecular-weight chitosan»

Supplementary 1

Table S1. The experimental scheme for studying low-molecular-weight chitosan hydrolysate on cv. Cherry tomato seedlings.

Exposition time, h	Chitosan hydrolysate concentration, mg/ml					
4	0	0.002	0.02	0.2	2	5
24	0	0.002	0.02	0.2	2	5
48	0	0.002	0.02	0.2	2	5

Supplementary 2

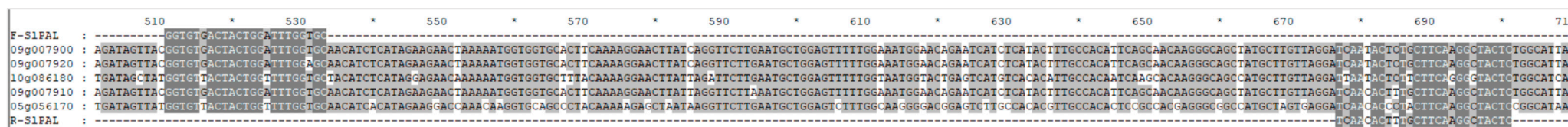


Figure S1. cDNA sequence alignment of the *Solyc10g086180*, *Solyc05g056170*, *Solyc09g007900*, *Solyc09g007910*, *Solyc09g007920* genes and *SIPAL* primers.

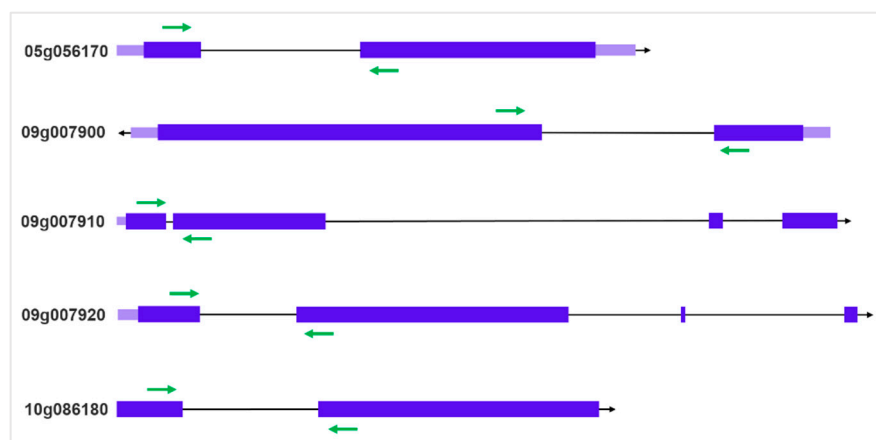


Figure S2. Schematic representation of primer alignment on exons of selected genes of PAL family