

Environments amid Uncertainties

This supplement file includes:

Figure S1. Meteorological data.

Figure S2. Empirical and simulated stochastic distributions of precipitation, maize evapotranspiration, and wheat evapotranspiration.

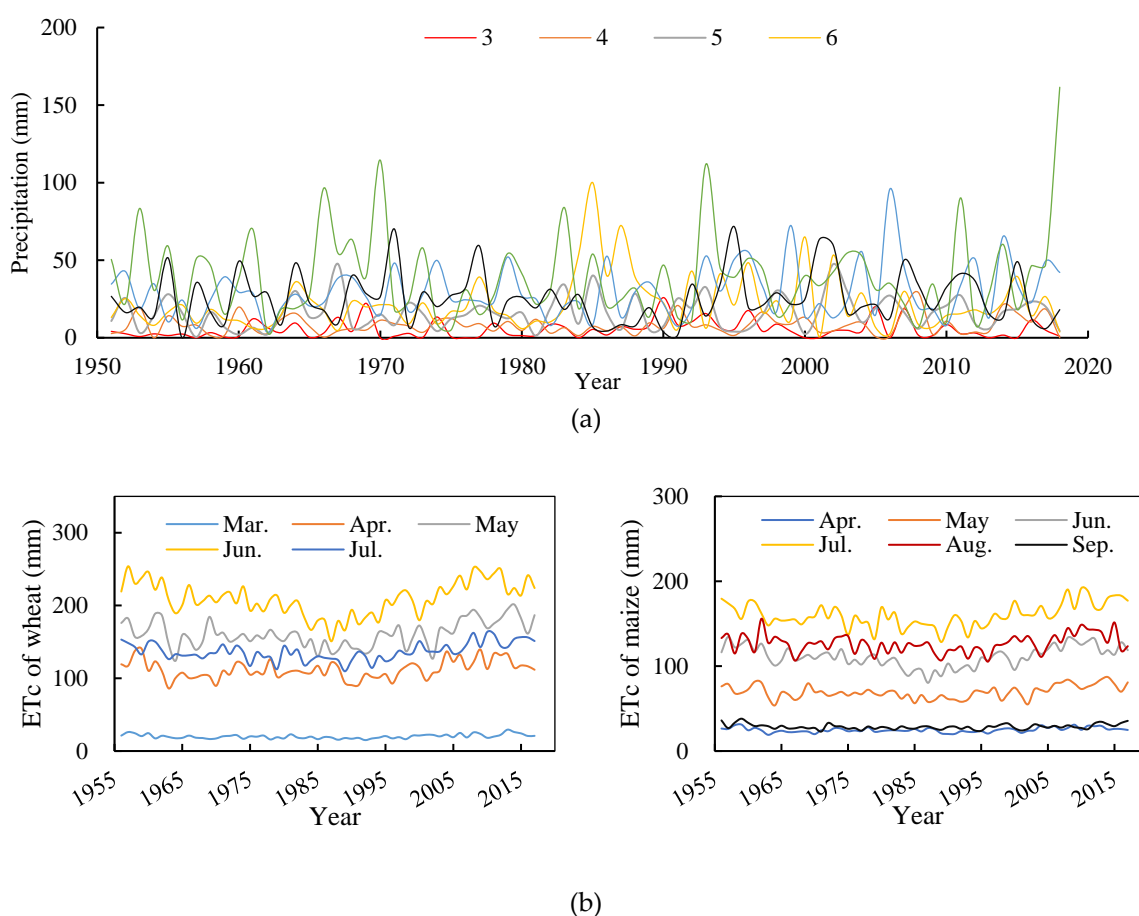
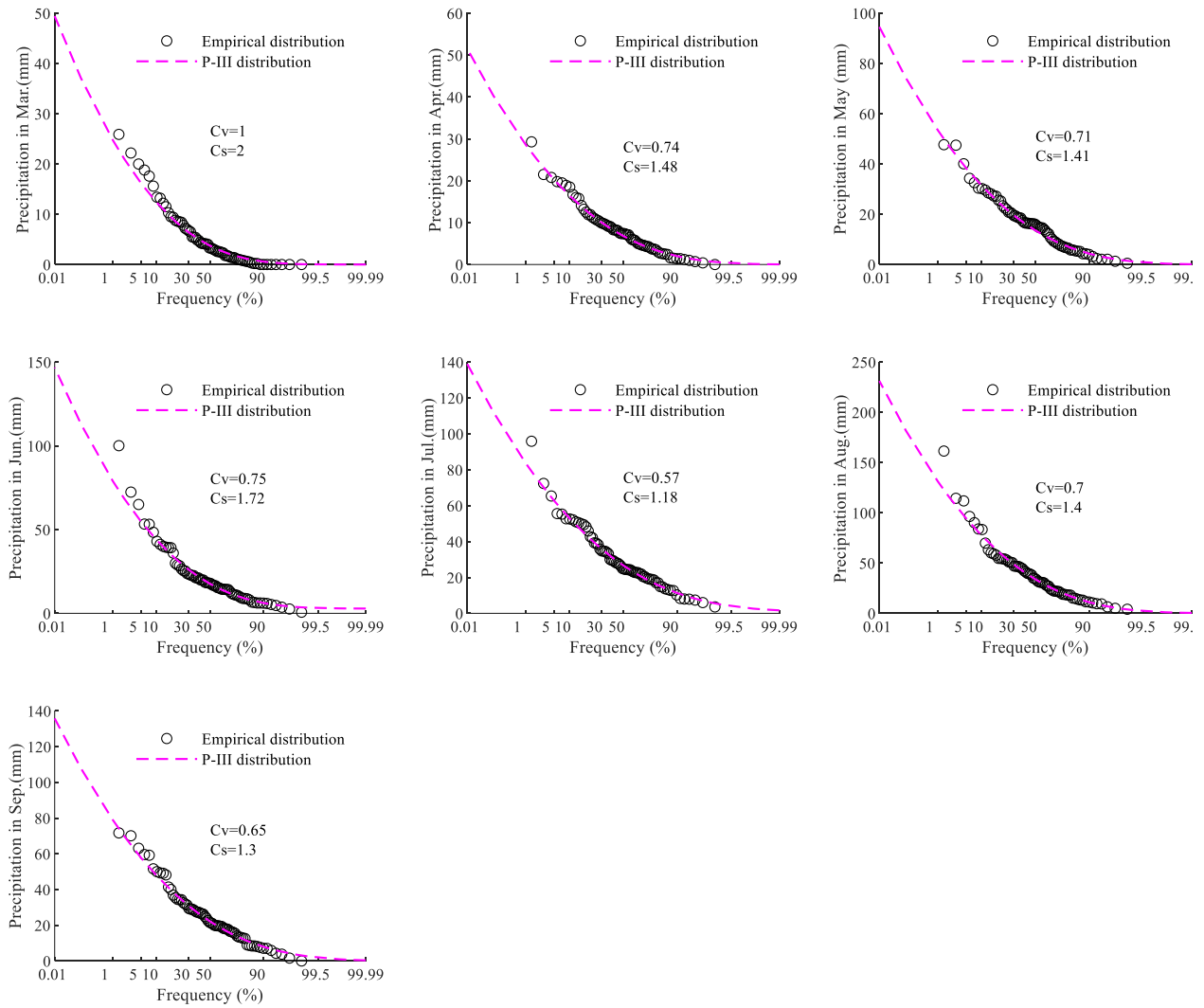
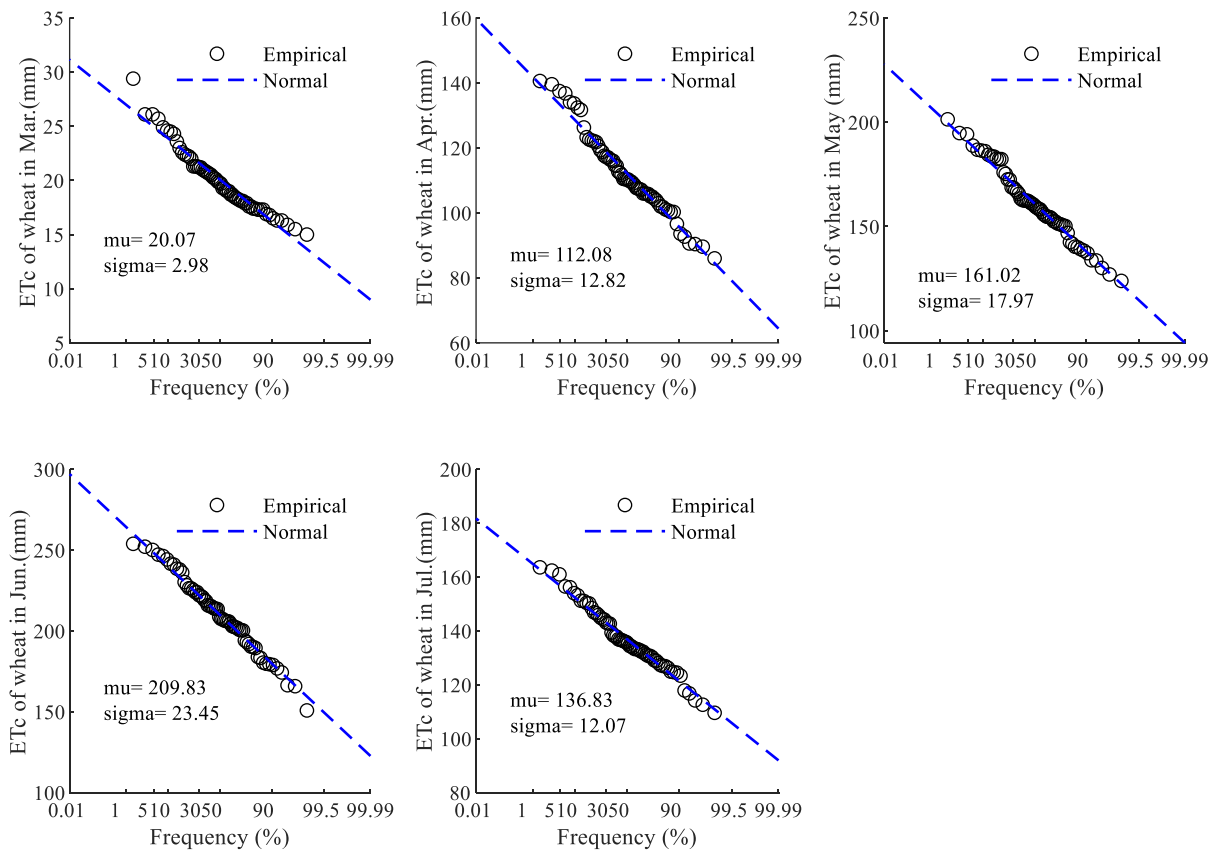


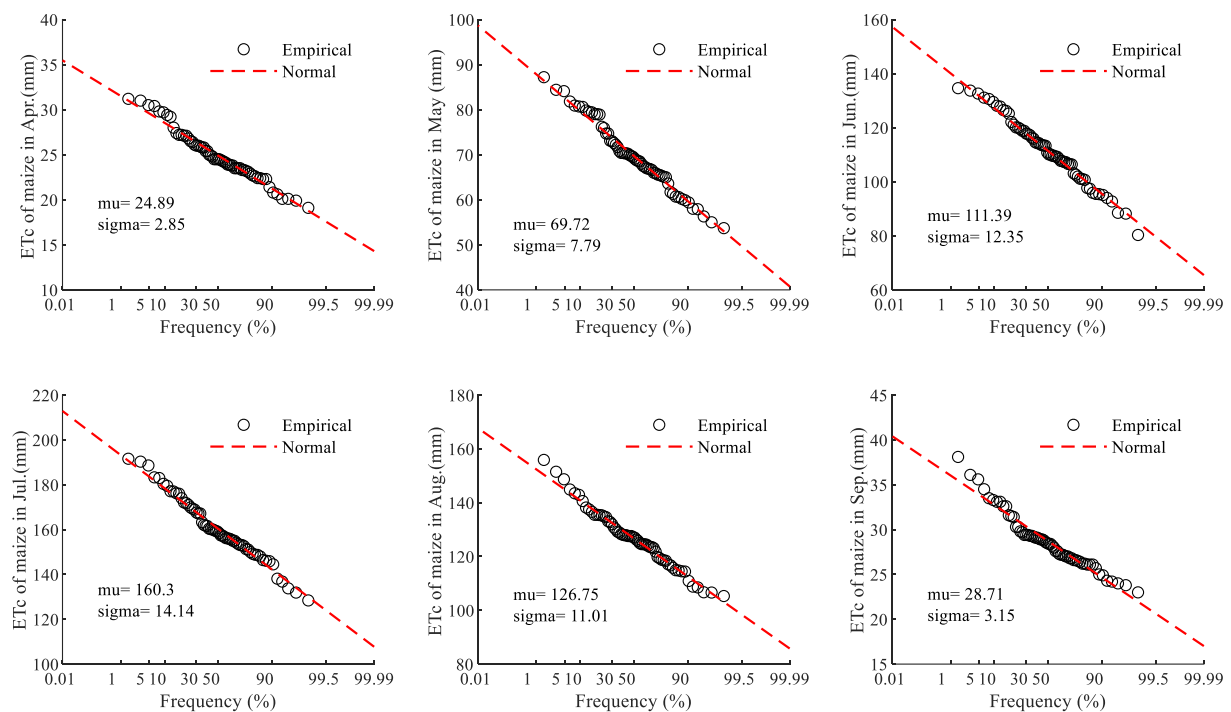
Figure S1. Meteorological data. (a) Monthly precipitation (March to September) from 1951 to 2018. (b) Crop evapotranspiration of wheat and maize in each month from 1956 to 2017.



(a) Monthly precipitation from March to September



(b) Monthly ETc for wheat from March to July



(c) Monthly ETc for maize from April to September

Figure S2. Empirical and simulated stochastic distributions of precipitation, maize evapotranspiration, and wheat evapotranspiration.