

Figure S1. Distribution of fatty acids for F₂ seeds of population 1 (PE529 × JD17-20-2-39). C1 means Pungsannamul, P1 means PE529, and P2 means JD17-20-2-39, and the average value of each check line is displayed.

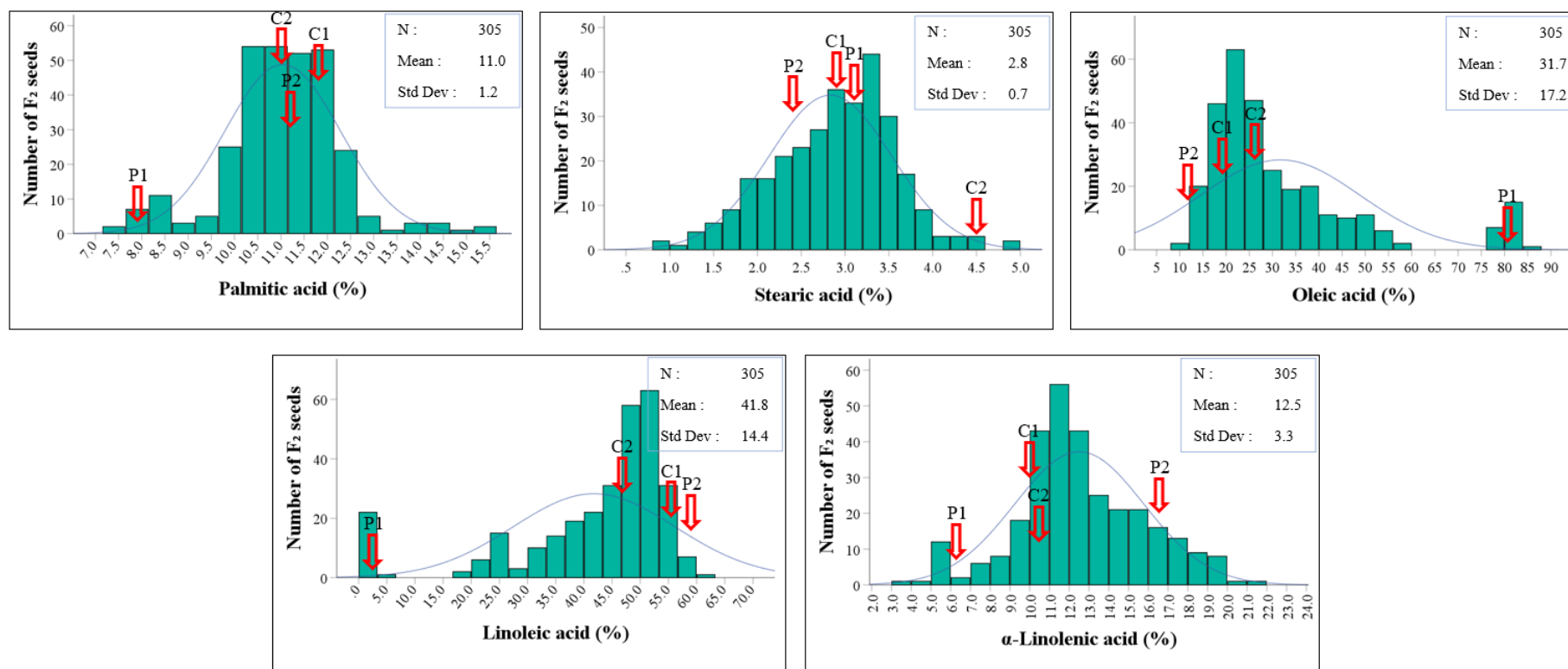


Figure S2. Distribution of fatty acids for F₂ seeds of population 2 (S08-14719 × JD17-20-2-39). C1 means Pungsannamul, C2 means PI283327, P1 means S08-14719, and P2 means JD17-20-2-39, and the average value of each check line is displayed.

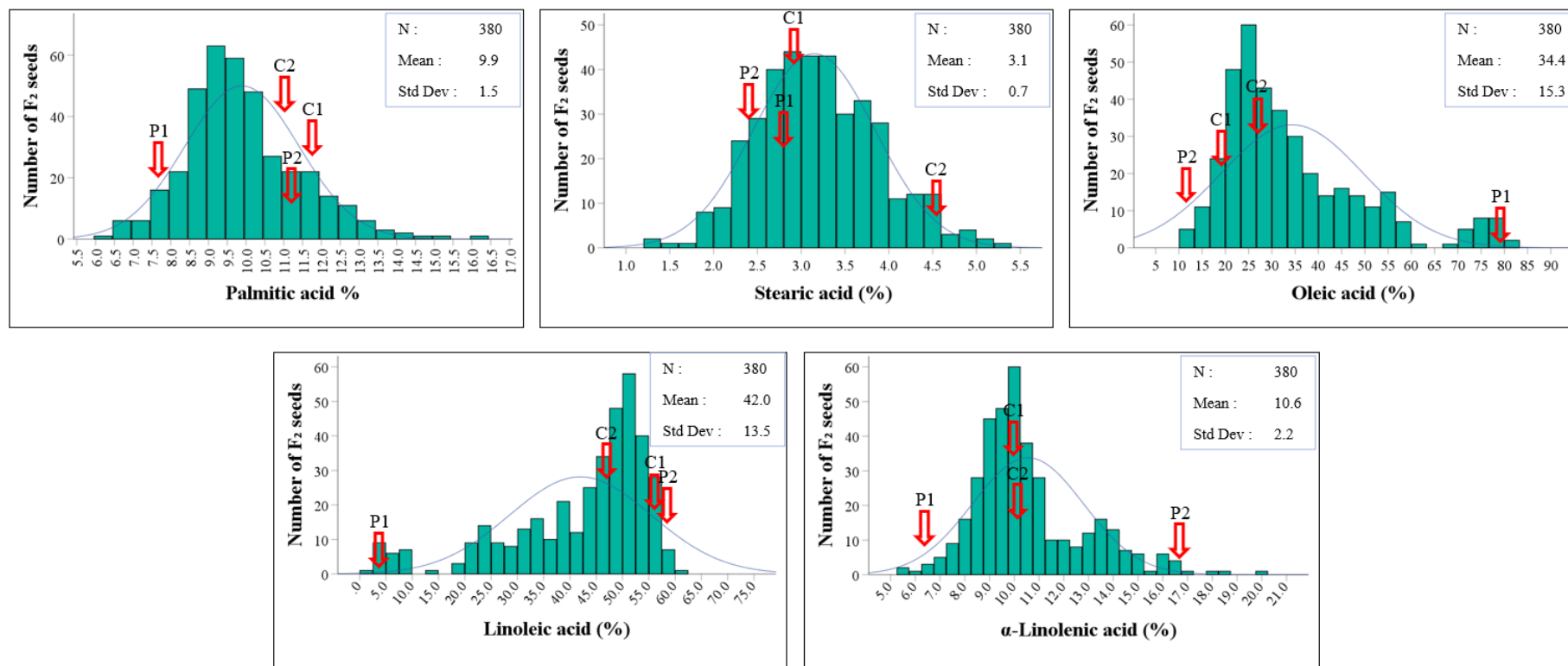


Figure S3. Distribution of fatty acids for F₂ seeds of population 3 (Hosim × JD17-20-2-39). C1 means Pungsannamul, C2 means PI283327, P1 means Hosim, and P2 means JD17-20-2-39, and the average value of each check line is displayed.