

Table. S1. Analysis of the soil that was used as a part of root growing medium.

Sampling depth	Texture of soil	OM (%)	Phosphorus (ppm)	Potassium (%)	Clay (%)	Silt (%)	Sand (%)	EC	SP (%)
0-30	loamy sand	2.01	4.9	17	12.4	32.8	54.8	2.8	35.7

OM: Organic matter  
SP: Saturation percentage

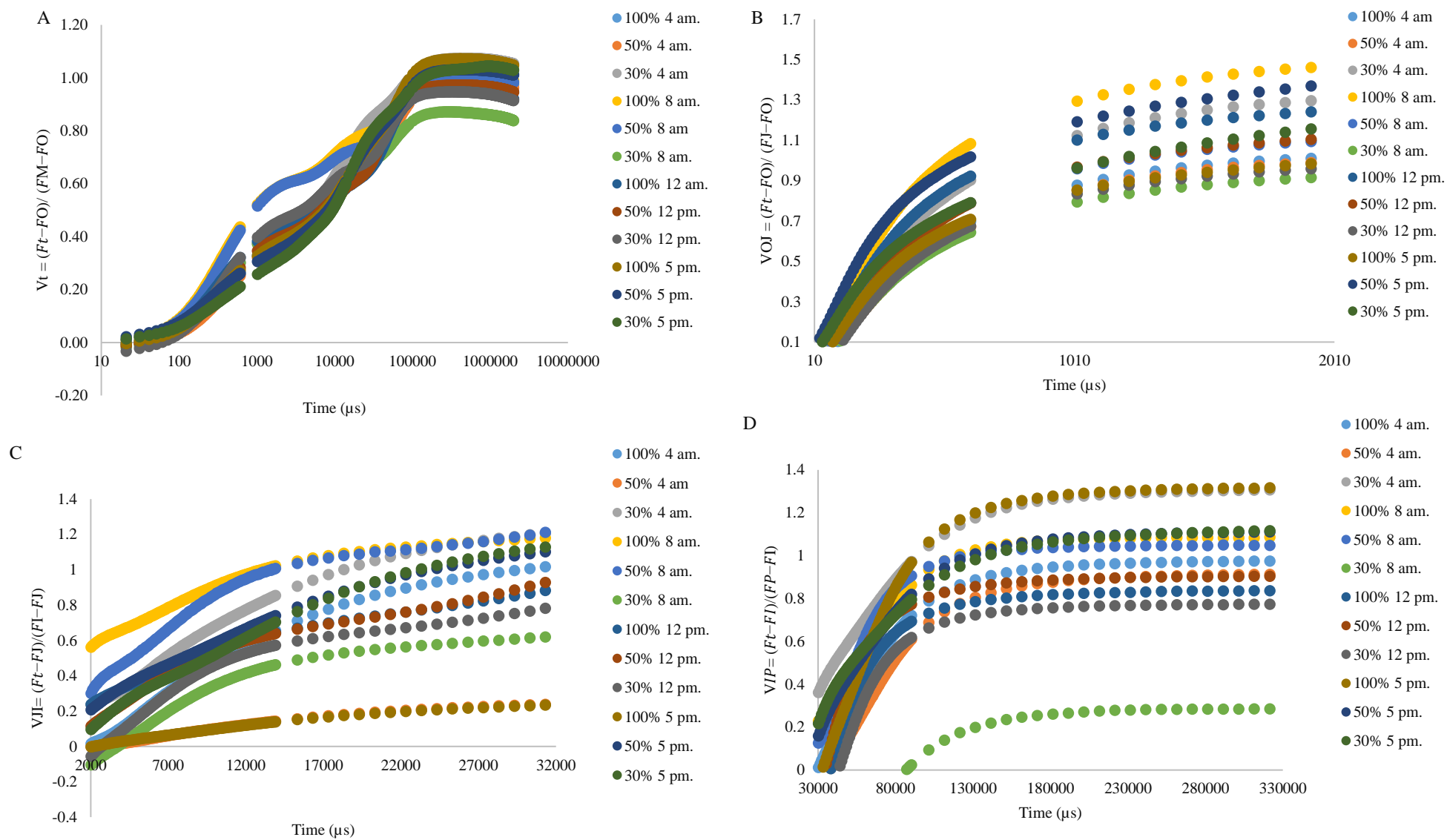


Figure. S1. Effect of different light intensities (100%: 100% of full sunlight, 50%: 50% of full sunlight and 30: 30% of full sunlight) and time-courses of a day on  $V_t$  (A),  $VOJ$  (B) ,  $V_{JI}$  (C) and  $VIP$ (D) in green basil.

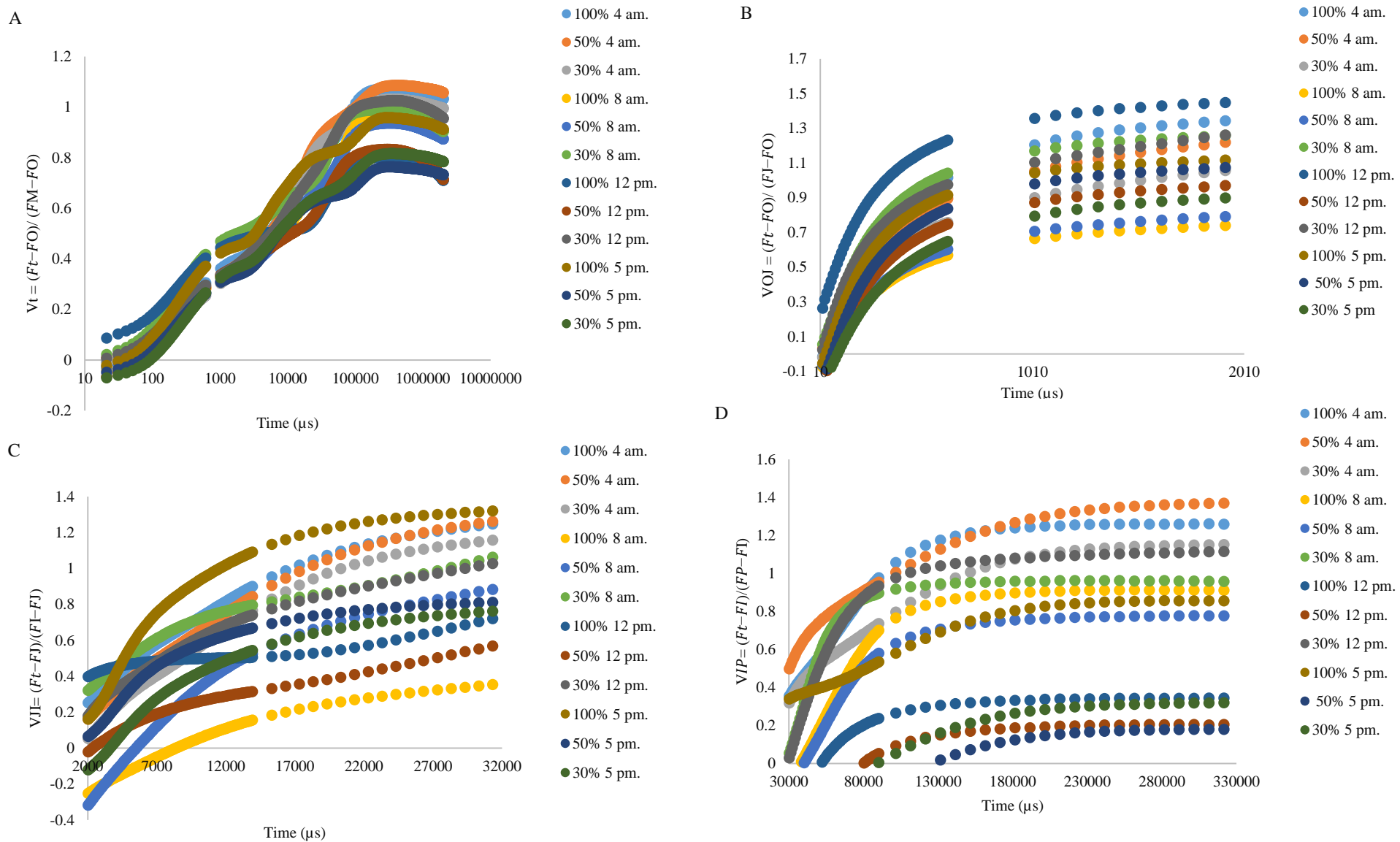


Figure S2. Effect of different light intensities (100%: 100% of full sunlight, 50%: 50% of full sunlight and 30: 30% of full sunlight) and time-courses of a day on  $V_t$  (A),  $VOJ$  (B) ,  $VJI$  (C) and  $VIP$ (D) in purple basil.