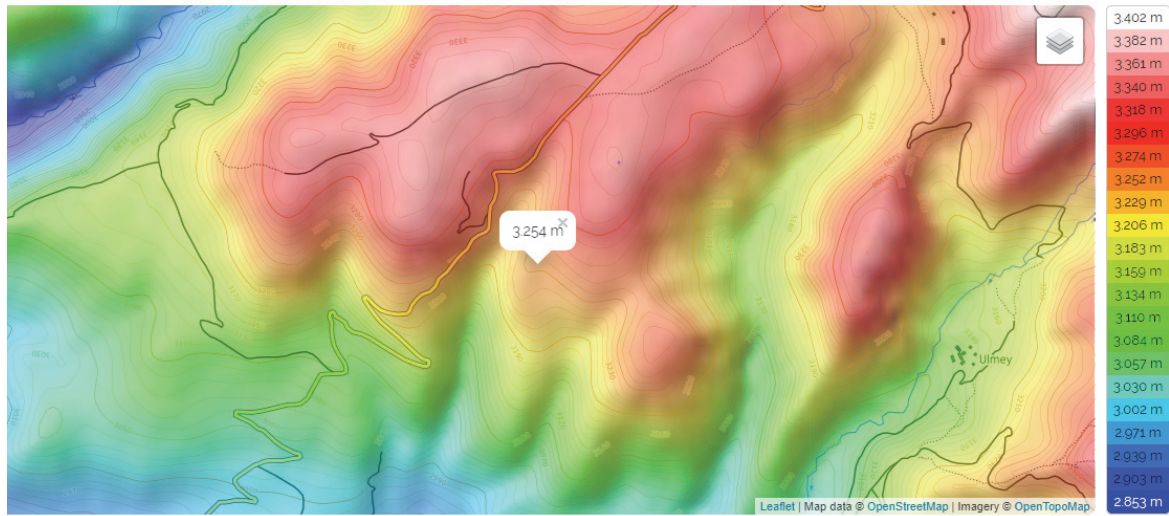
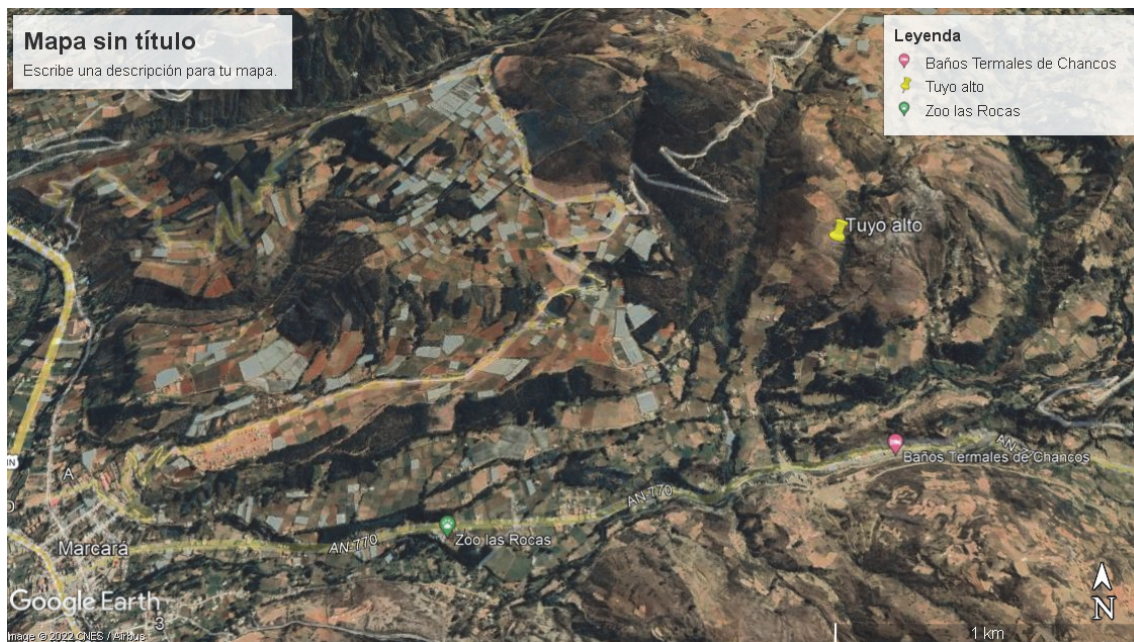


SUPPLEMENTARIES



Supplementary Figure S1. Topographic map obtained from the website Topographic-map.com. Area of the experiment, Tuyo Alto, Marcará, Ancash, Peru.

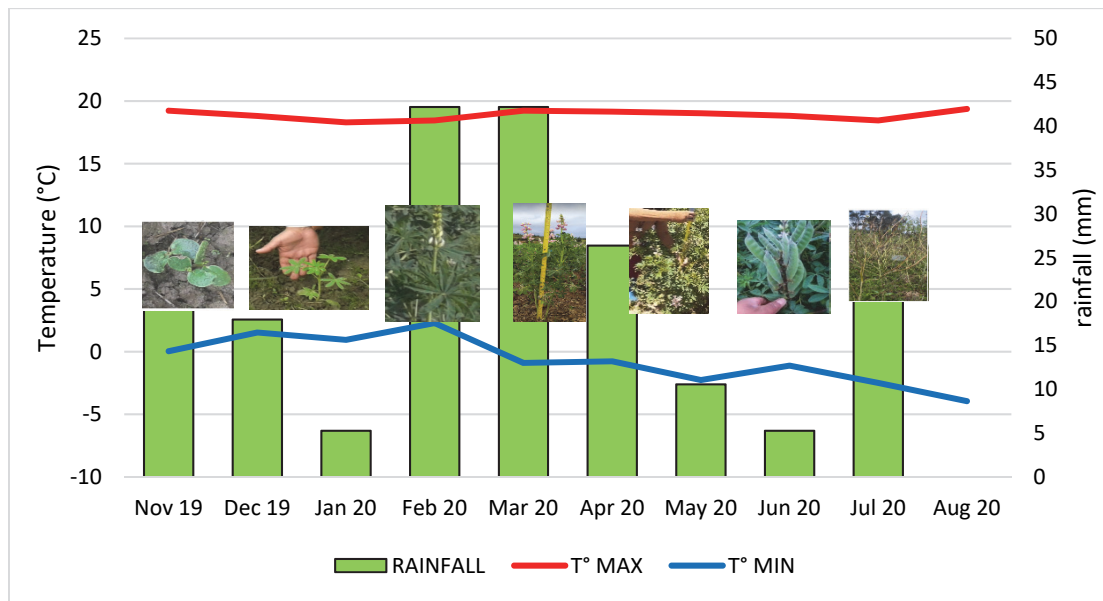
Height number indicates experiment site, view at 300 m (1,000 ft) altitude



Supplementary Figure S2. Location of the experiment in Tuyo Alto, Marcará, Ancash, Peru, using images provided by Google Earth, whose location point is -Latitude 9°18'39.17" S; Longitude. 77°34'29.39" W, view at 1 km altitude



Supplementary Figure S3. Sketch of the experiment in Tuyu Alto, Marcara, Ancash, Peru, using images provided by Google Maps, whose location point is Latitude 9°18'39.17" S; Longitude. 77°34'29.39" W, view at 50 m altitude



Supplementary Figure S4. Rainfall, maximum and minimum monthly temperature, presented during the phenological development of tarwi var. Andenes (Fuente: NASA Data Access Power)



Supplementary Figure S5. Presence of turquoise larvae, Lepidoptera of the Pyralidae family, feeding on roots and nodules