

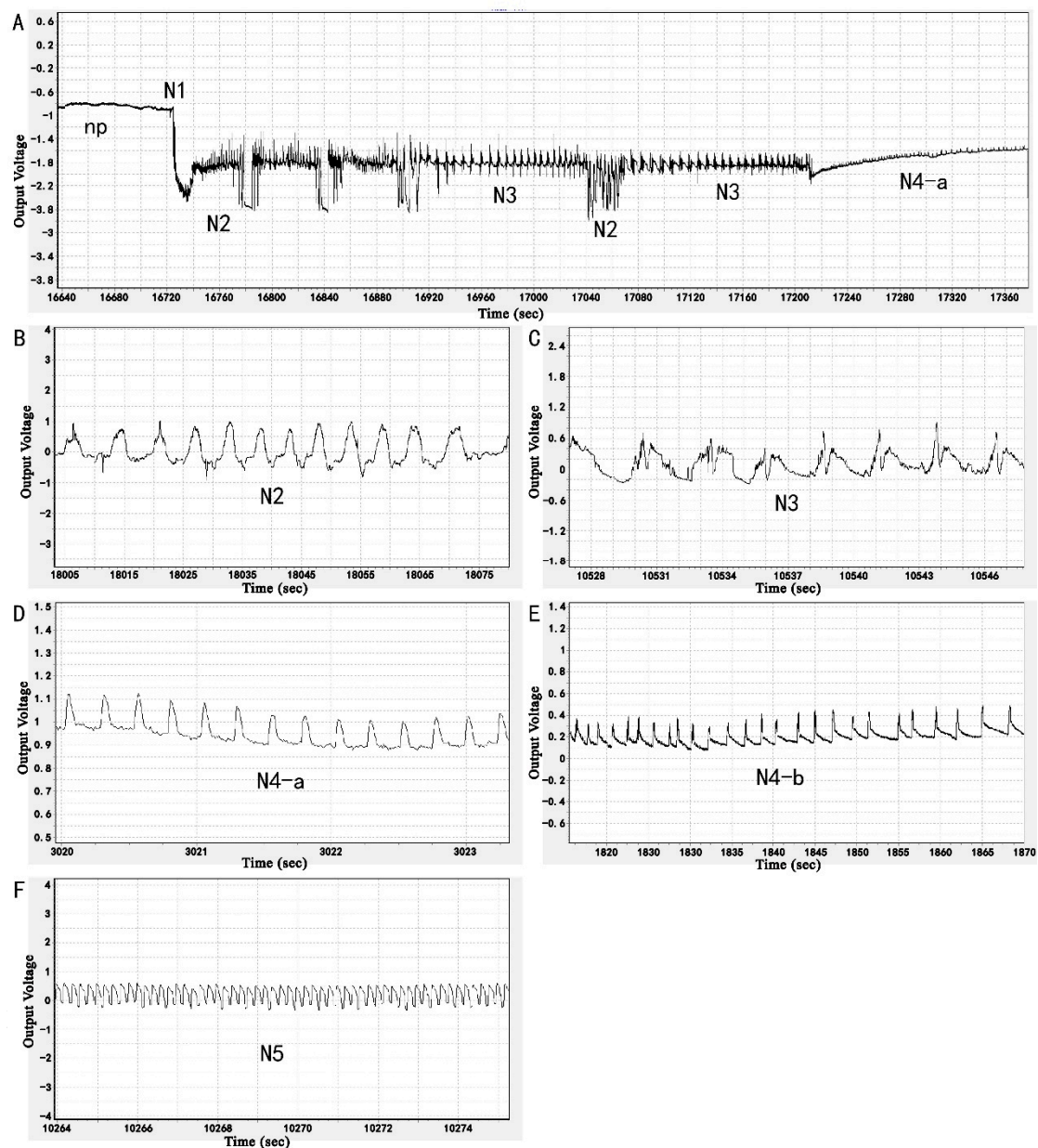
Seed coating with triflumezopyrim induces the rice plant's defense and inhibits the brown planthopper feeding behavior

Chanyuan Xi^{1†}, Sheraz Ahmad^{1†}, Julong Yu^{2†}, Jieyu Zhang¹, Yu Chen¹, Guo Zhang², Haowen Zhu¹, Linqun Ge^{1*}, XiangYang Yu^{2*}, Zhaolin Shu³.

[†] Showed equal to work

* Corresponding author: lqge@yzu.edu.cn (L.G.); yuxy@jaas.ac.cn (X.Y.)

Supplementary Figure S1 for the EPG experiment



(N2 waveform); (C) extracellular activity near the phloem region (N3 waveform); (D) intracellular activity in the phloem region (N4-a waveform); (E) phloem sap ingestion (N4-b waveform); and (F) activity in the xylem region (N5).