

Figure S1. Average, minimum and maximum air relative humidity (RH) and temperature (°C) during the experiment (2014-2015).

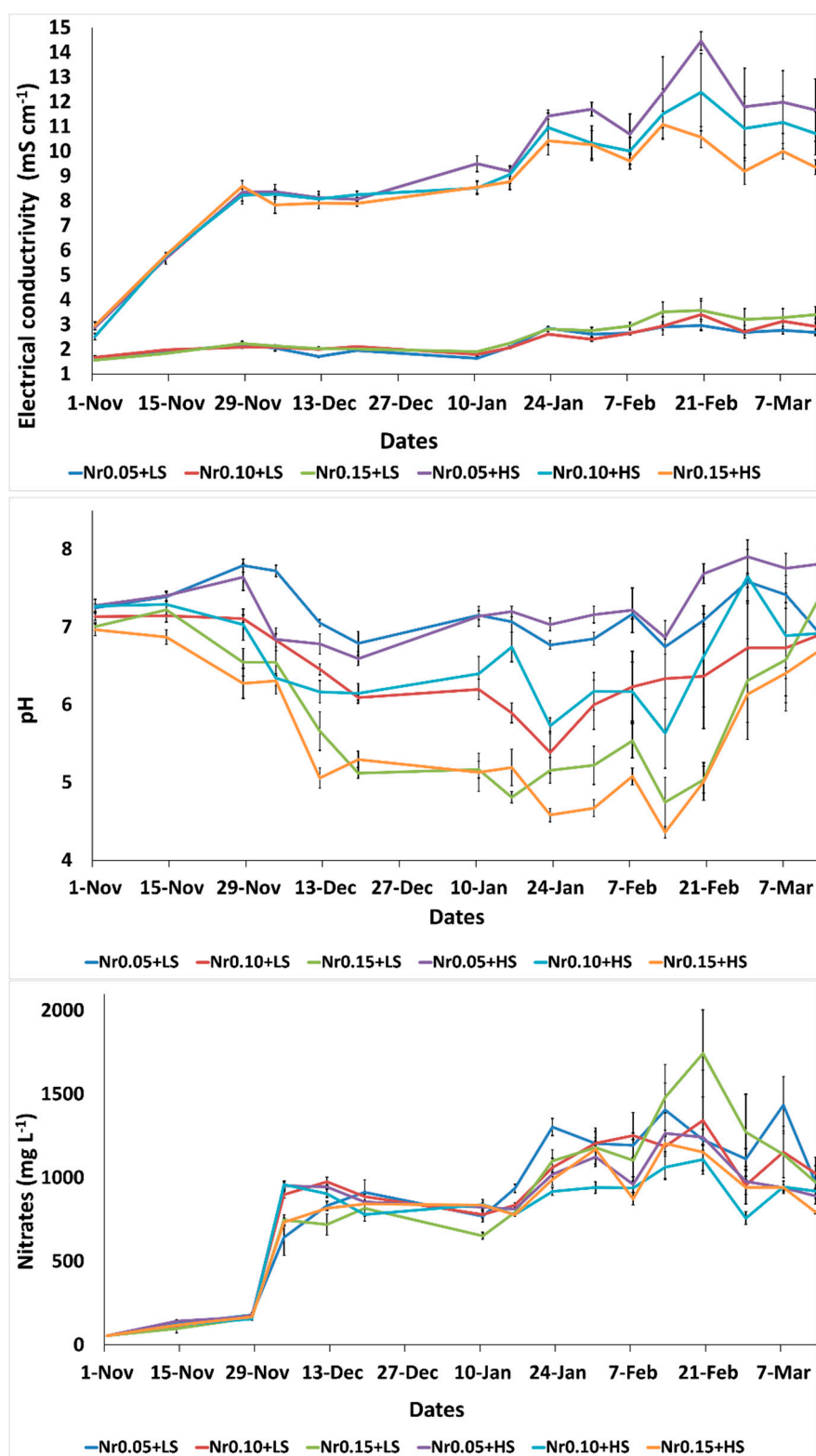


Figure S2. The effect of salinity (Sal) levels (LS: Low Salinity of 0 mM NaCl; HS: High Salinity of 50 mM NaCl) and $\text{NH}_4/\text{N}_{\text{total}}$ ratios (Nr0.05, Nr0.10, and Nr0.15) application on the fluctuation of the electrical conductivity (EC; mS cm^{-1}), pH and nitrates content of the drainage solution, during cultivation (2014-2015). The values refer to the mean (\pm SE), following statistical analysis according to Duncan's Multiple Test (MRT).