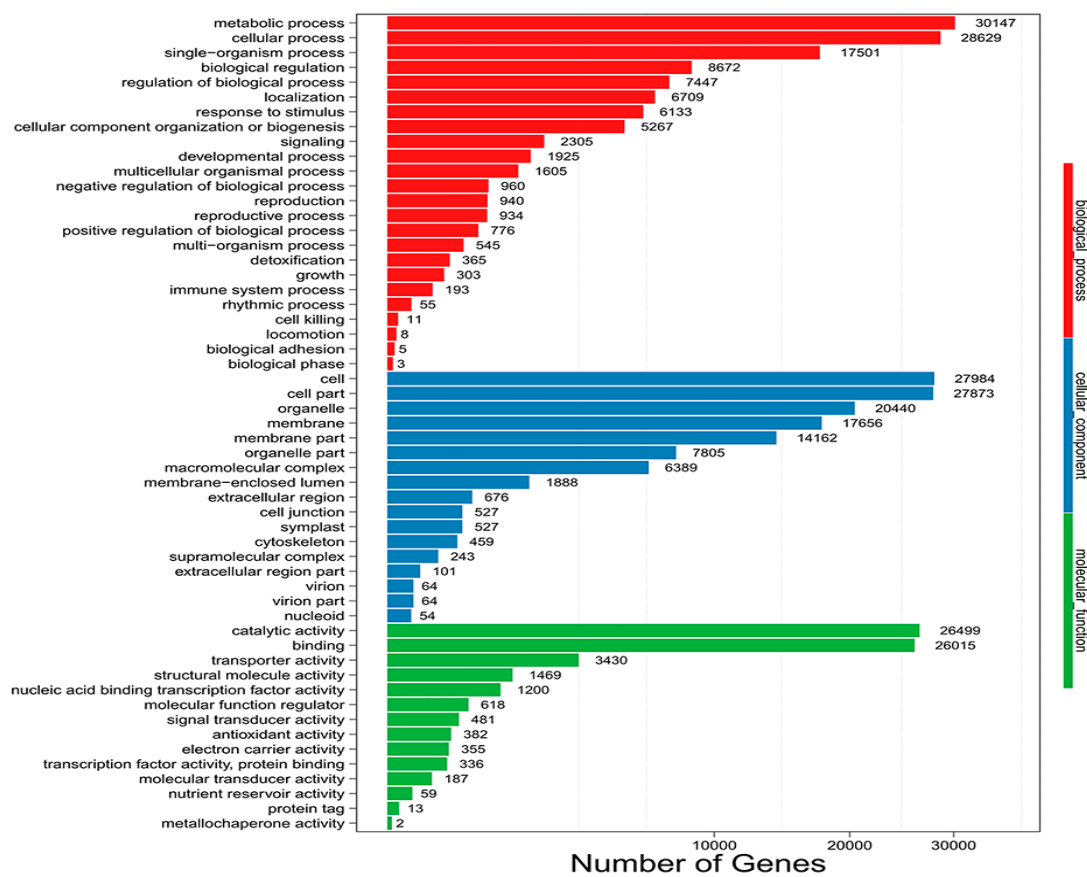
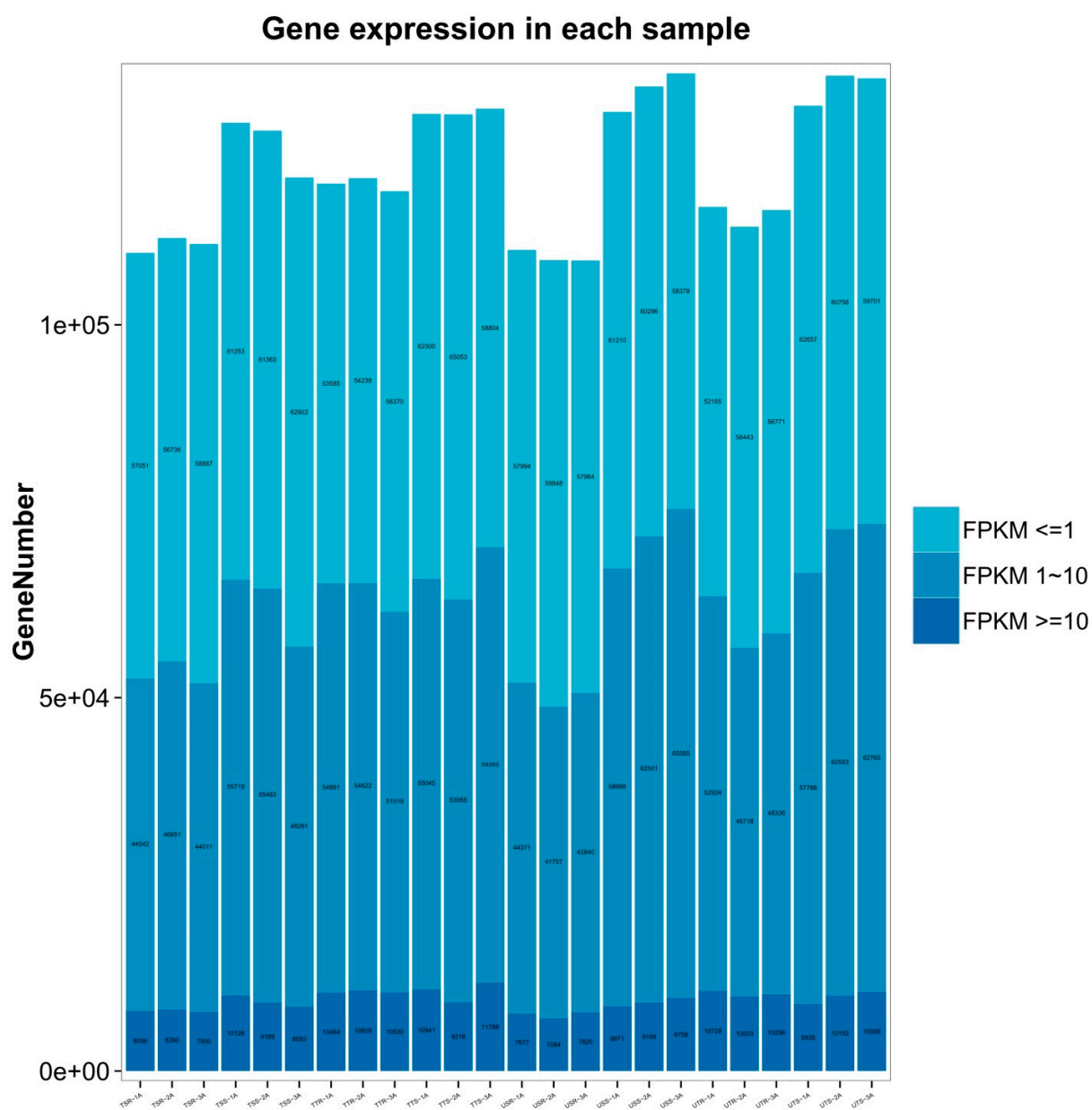


Supplemental Figures

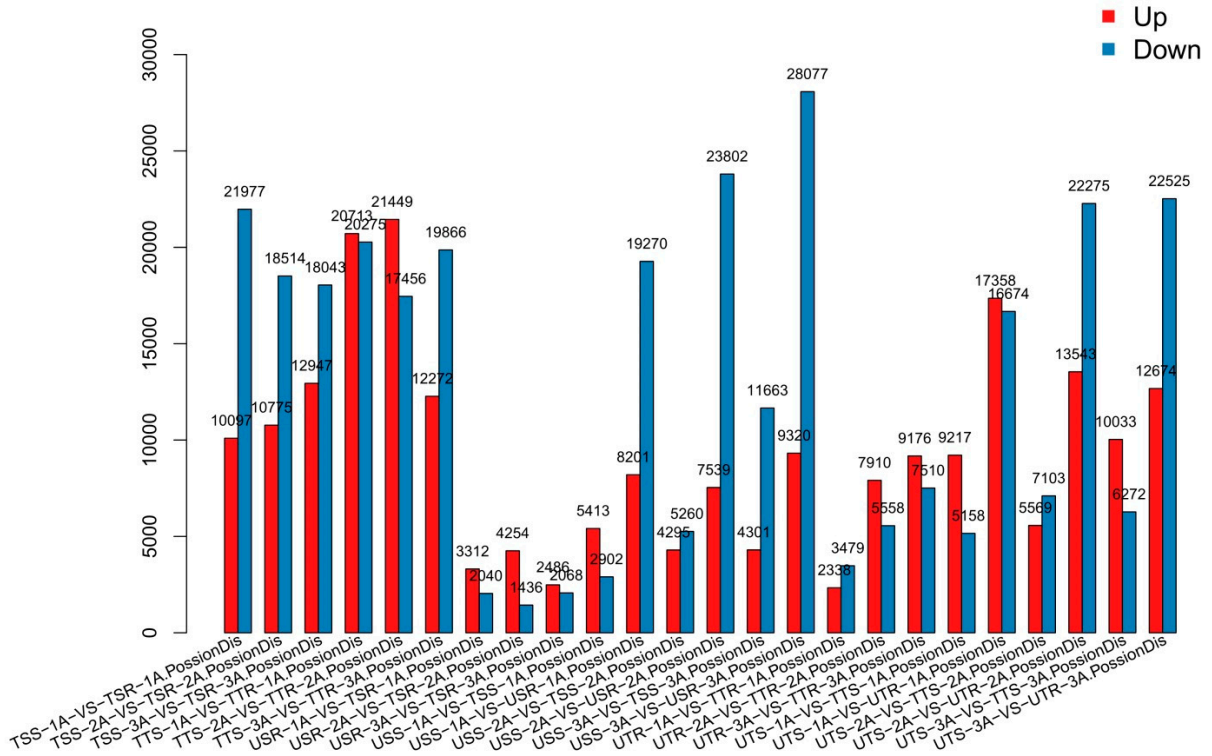


Supplemental Figure S1. Histogram of GO classification.

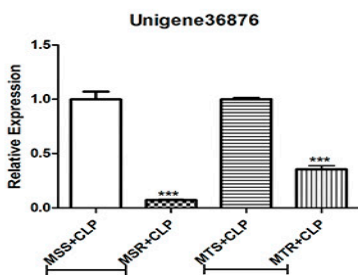
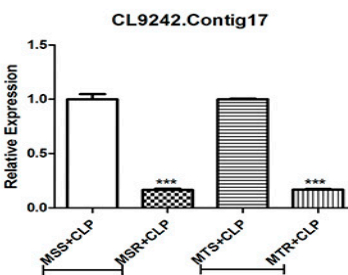
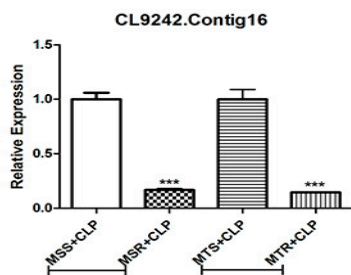
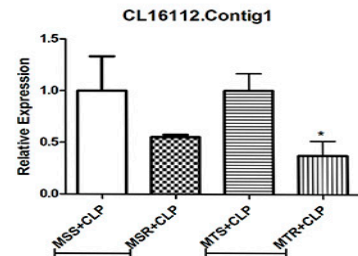
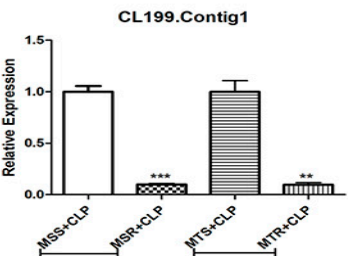
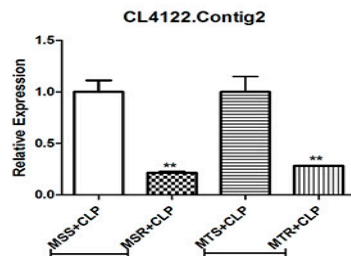
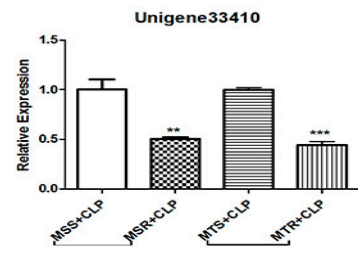
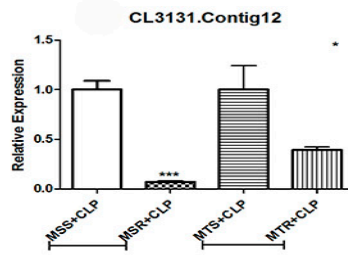
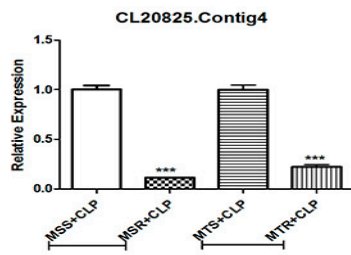
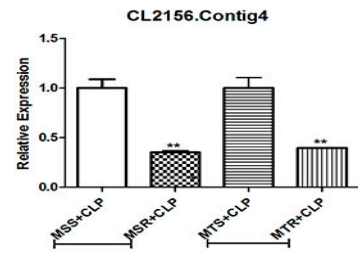
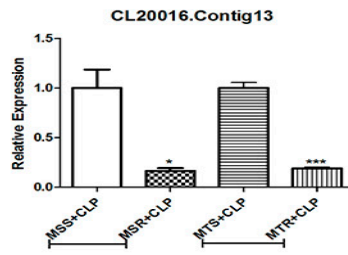
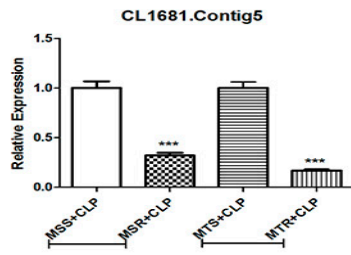
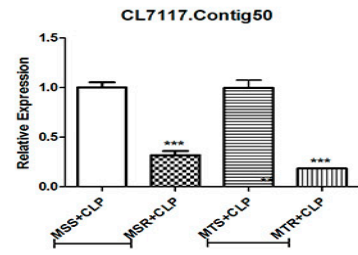
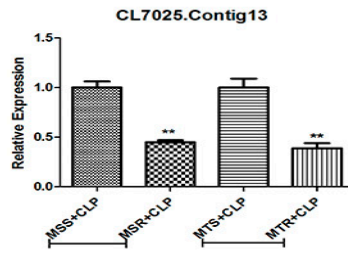
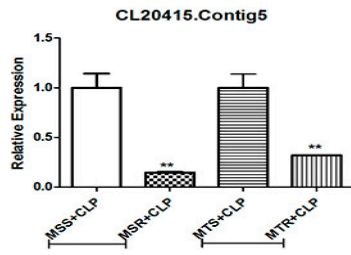


**Supplemental Figure S2.** Gene expression distribution.

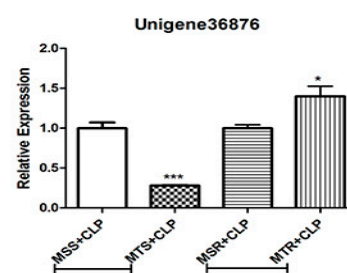
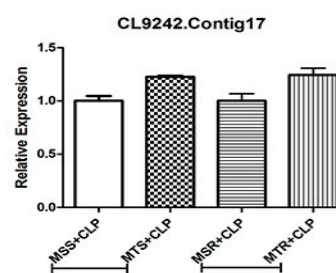
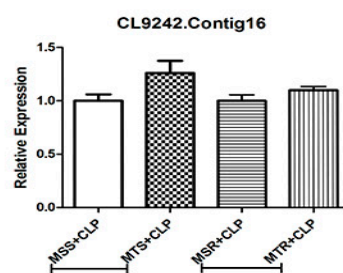
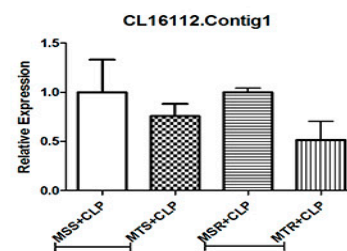
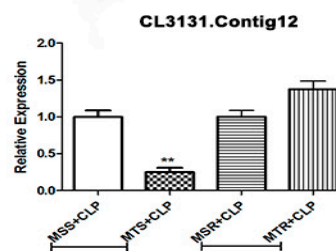
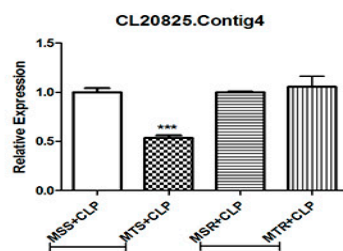
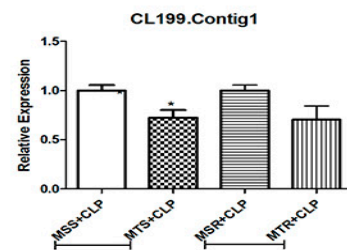
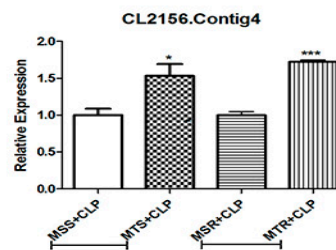
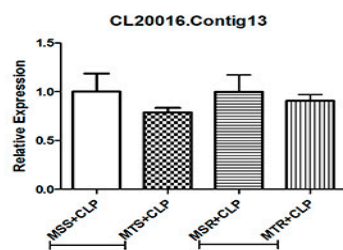
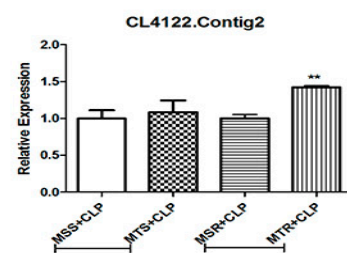
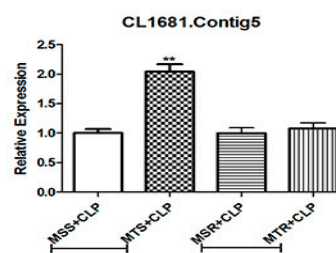
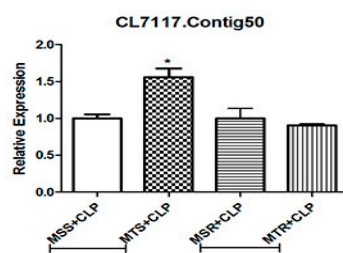
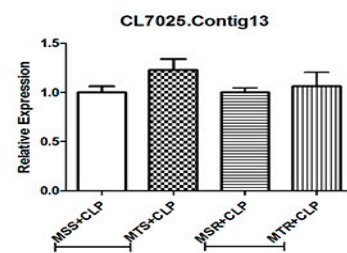
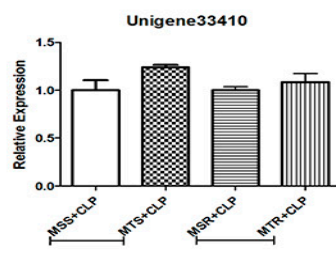
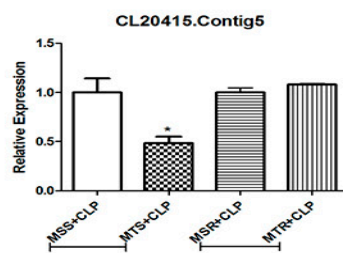
### Statistic of Differently Expressed Genes



**Supplemental Figure S3.** Summary of DEGs. The  $x$ -axis represents the comparison functionality between each group. The  $y$ -axis represents the DEG numbers. The red color represents up-regulated DEGs, while blue represents down-regulated DEGs.



**Supplemental Figure S4.** qRT-PCR validation of candidate NTSR gene expression in groups (resistant population vs. susceptible population) under pre-application of malathion. Three replicates were performed for each of the three biological replicates. The error bars represent the standard error of the mean. MSS: prior application of malathion in the susceptible population in the seedling stage; MSR: prior application of malathion in the resistant population in the seedling stage; MTS: prior application of malathion in the susceptible population in the tillering stage; MTR: prior application of malathion in the resistant population in the tillering stage; +CLP: application of clodinafop-propargyl. \* $P < 0.05$ , \*\* $P < 0.01$ , \*\*\* $P < 0.001$ .



**Supplemental Figure S5.** qRT-PCR validation of candidate NTSR gene expression in the inter-group comparison (different stages in the same population) under pre-application of malathion. Three replicates were performed for each of the three biological replicates. The error bars represent the standard error of the mean. MSS: prior application of malathion in the susceptible population in the seedling stage; MSR: prior application of malathion in the resistant population in the seedling stage; MTS: prior application of malathion in the susceptible population in the tillering stage; MTR: prior application of malathion in the resistant population in the tillering stage; +CLP: application of clodinafop-propargyl. \* $P < 0.05$ , \*\* $P < 0.01$ , \*\*\* $P < 0.001$ .