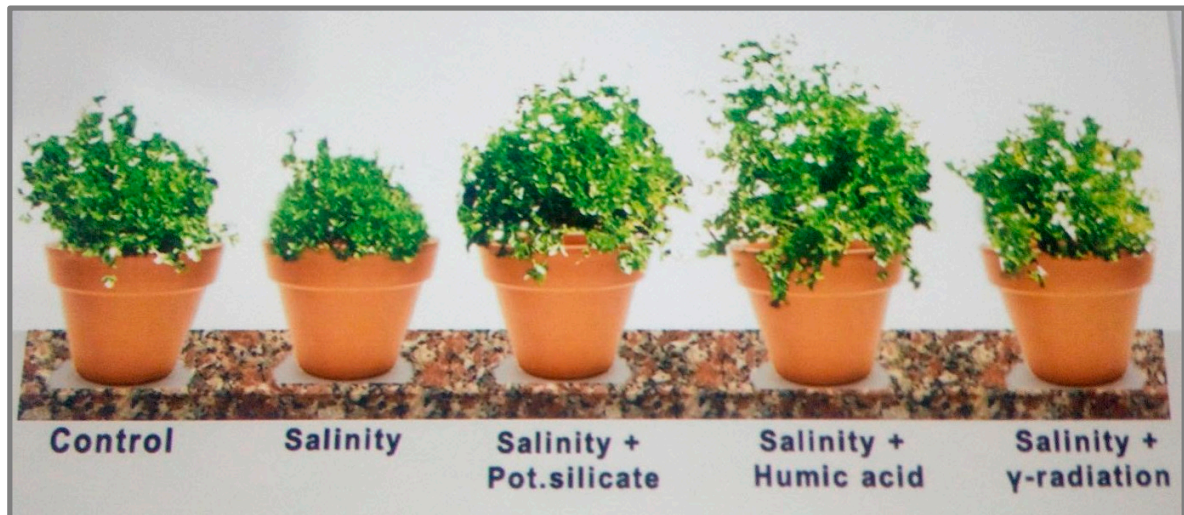
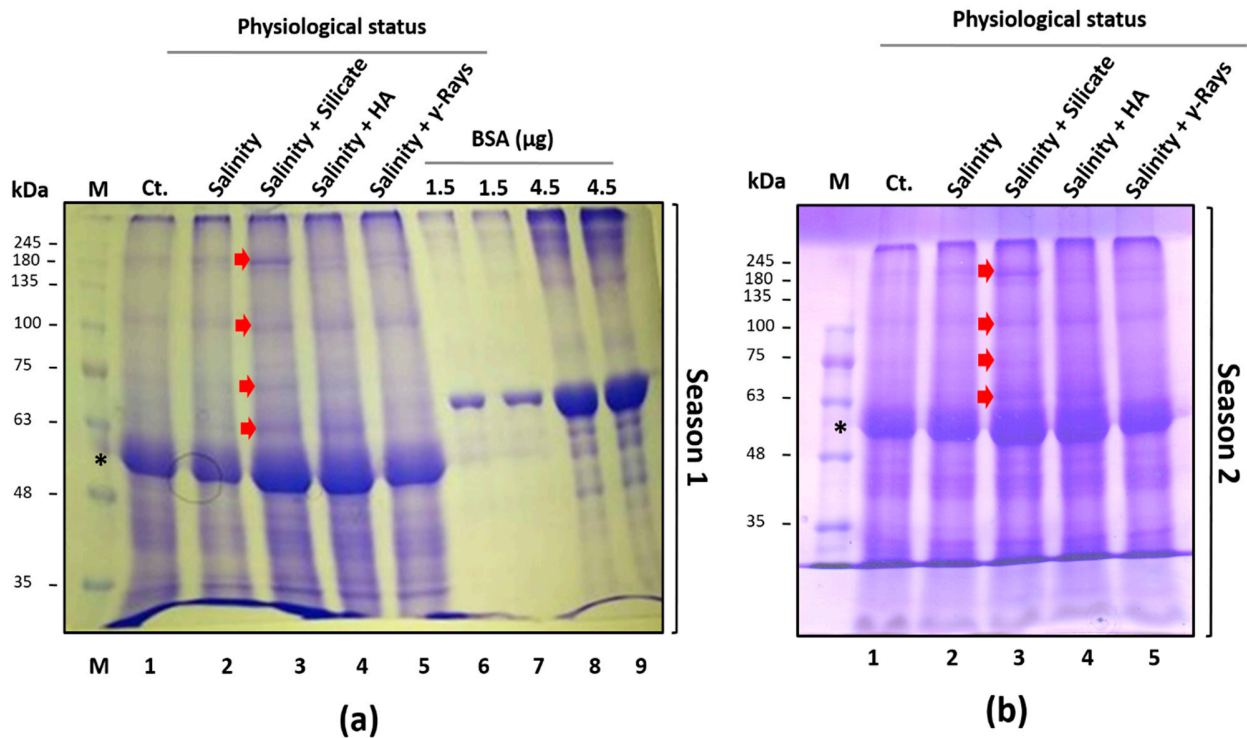


---

## Supplementary Figures



**Suppl. Figure S1.** The effect of biostimulant pretreatments on the vegetative stage of coriander samples at the flowering stage subjected to salinity stress.



**Suppl. Figure S2.** The effect of pretreatments on TCPs patterns of control, salt-stressed, and stress-alleviated coriander plants by pretreatments 75 days after sowing. Control (Lane 1) and salt-stressed coriander samples (Lane 2) were pretreated by pot. silicate (80 mM) (Lane 3), HA (50 mg l<sup>-1</sup>) (Lane 4) or soaked in water after exposure to gamma rays (50 Gy) (Lane 5). TCPs were extracted, separated by 10% SDS-PAGE (for season 1; **Panel A**) and (for season 2; **Panel B**), and stained with CoBB G-250. The numbers indicated by the left-hand side refer to molecular weight markers in kDa. Arrowheads in red indicate the upregulation of protein bands in "Salinity+pot. silicate", but not in "Salinity" or any other samples. The (\*) symbol indicates the RuBisCO<sub>L</sub>S band. Quantification of the RuBisCO large subunit (RuBisCO<sub>L</sub>S) protein band was performed using ImageJ software (IJ 1.46r) as previously described by Hassanein et al. (2021) [25]. Original gels are shown in Supplementary Figure (2A,B). The 35 kDa protein band was selected to normalize the quantification of RuBisCO<sub>L</sub>S protein production.