

Supplementary Materials

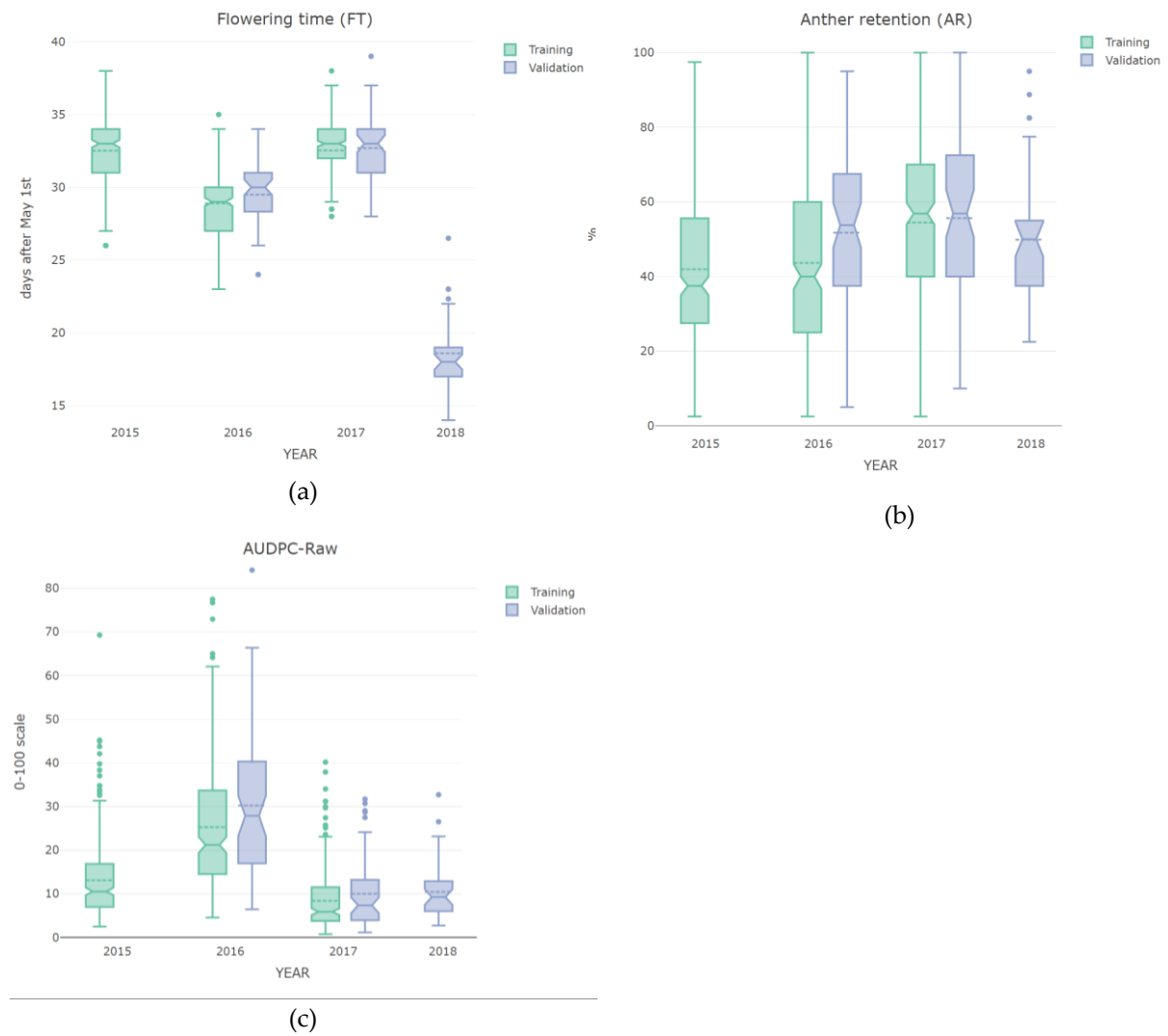


Figure S1. Boxplots on the distribution of the traits analyzed distinguished by both training and validation sets. (a) Flowering time measured in days after May, (b) AR in percentage and (c) AUDPC in a 0-100 scale.

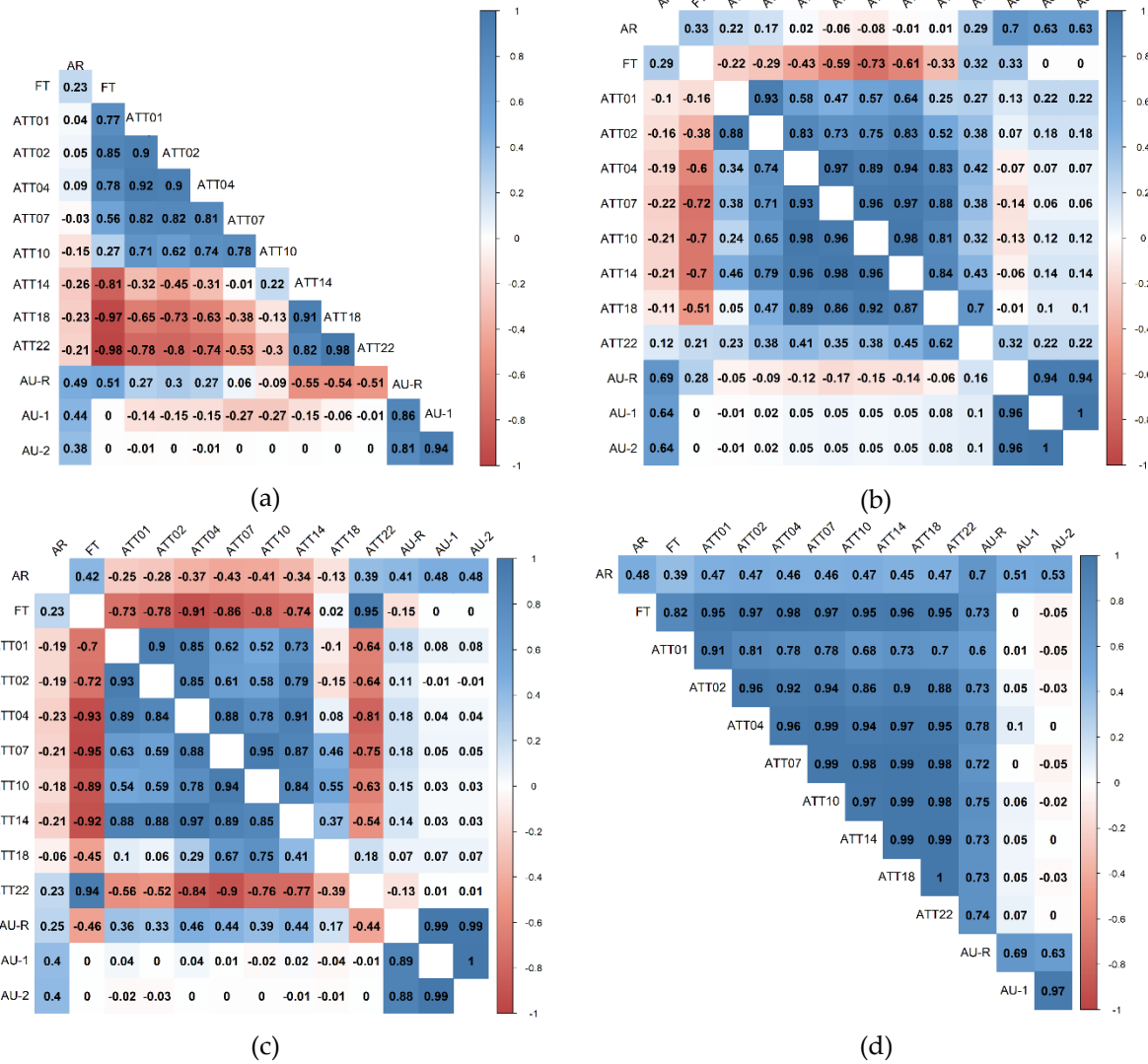


Figure S2. Correlation plots of the traits analyzed in the years (a) 2015, (b) 2016, (c) 2017 and (d) 2018. The abbreviations stand as follows AR: anther retention, FT: flowering time, ATT accumulated thermal time at different days post infection. AU-R: AUDPC scores, AU-1: AUDPC scores corrected under method-1, AU-2: AUDPC scores corrected under method-2. Lower diagonals represent the training set and upper diagonals the validation set.

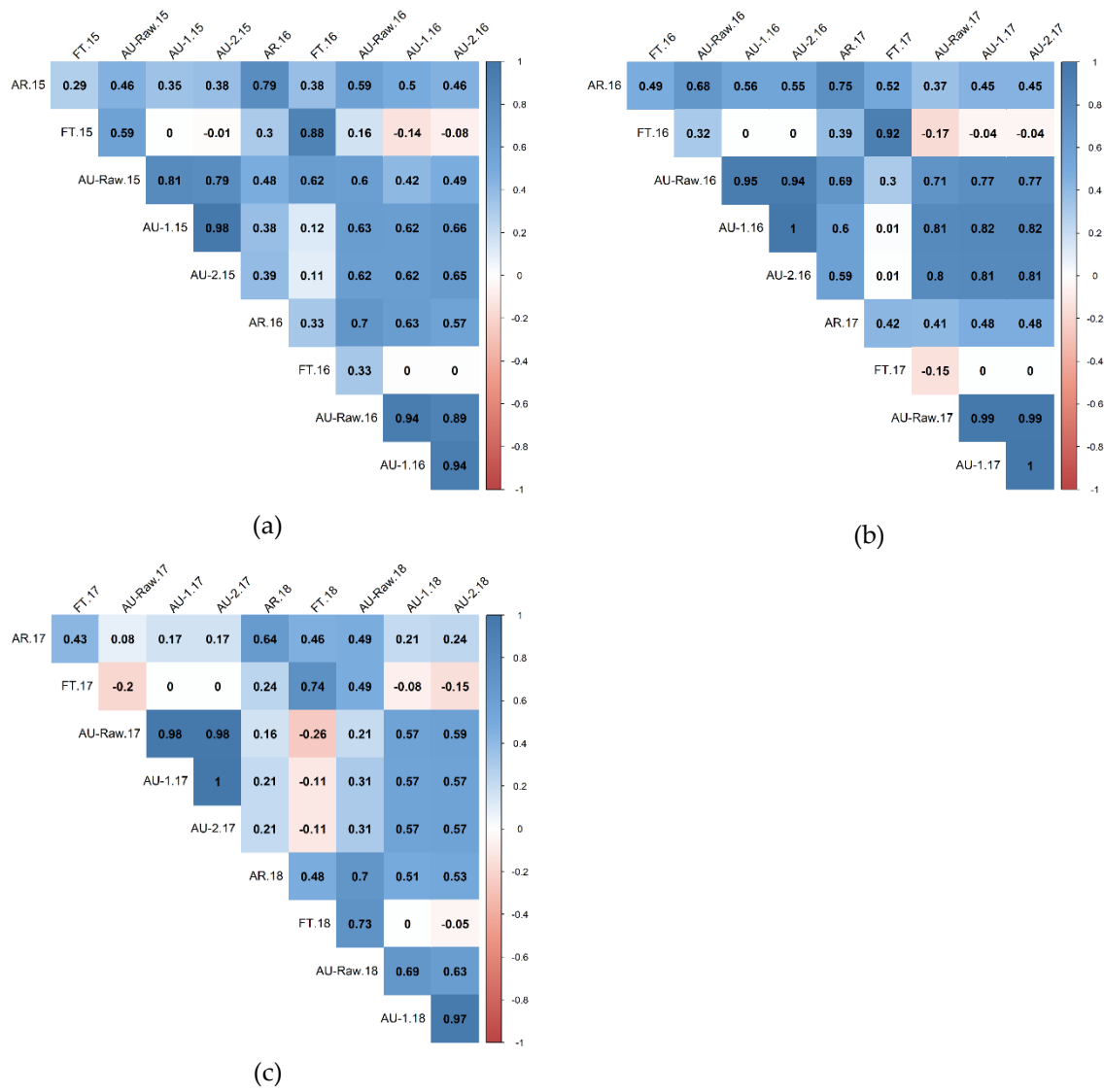


Figure S3. Correlation plots between the overlapping lines in two consecutive years (a) 2015-2016 (b) 2016-2017 and (c) 2017-2018. Abbreviations of each trait are followed by the last two digits of year of the respective trial. AR: anther retention, FT: flowering time, AU-Raw: AUDPC scores, AU-1: AUDPC scores corrected under method-1, AU-2: AUDPC scores corrected under method-2.

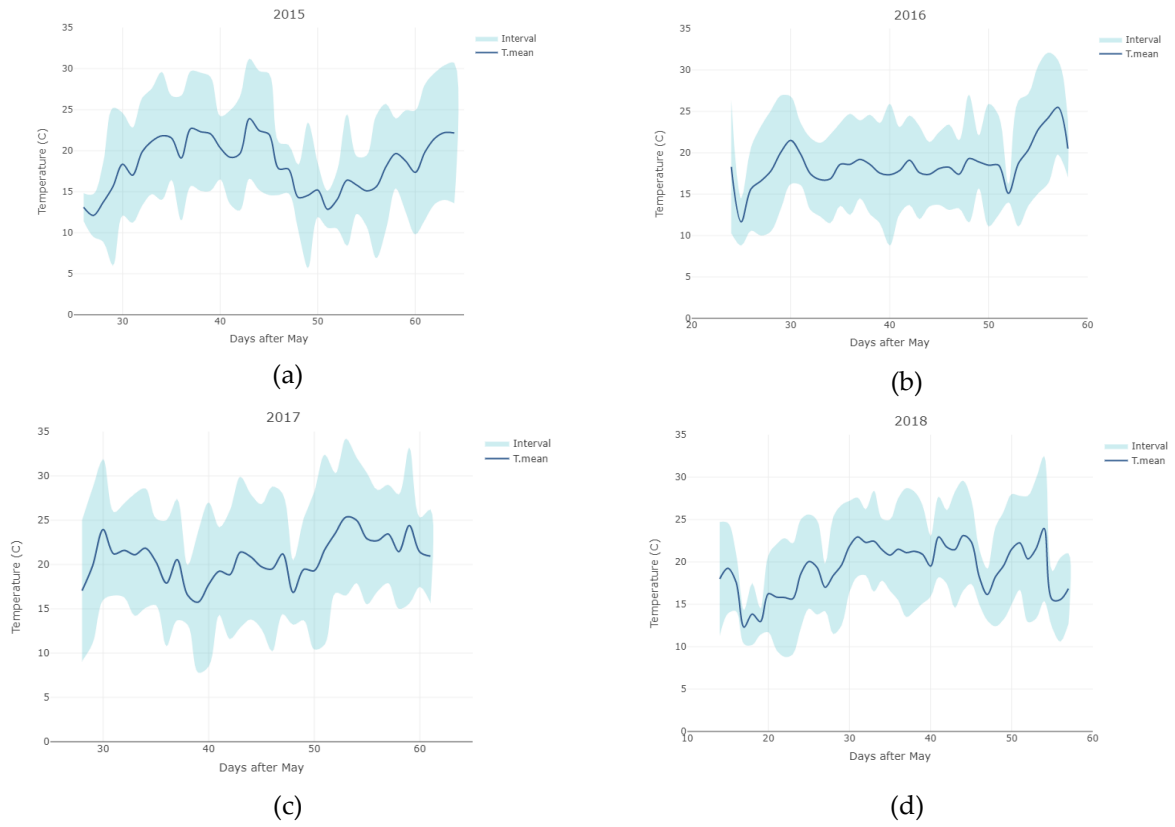


Figure S4. Temperature profiles of each of the seasons (a) 2015, (b) 2016, (c) 2017 and (d) 2018 measured at the experimental station of the Department of Agrobiotechnology in Tulln (16°04, 16'E, 48°19, 08'N, and 177m above sea level).