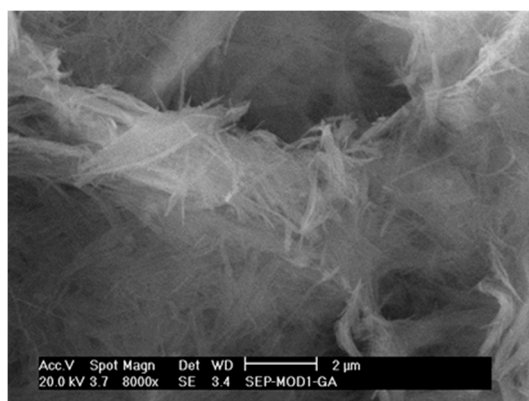
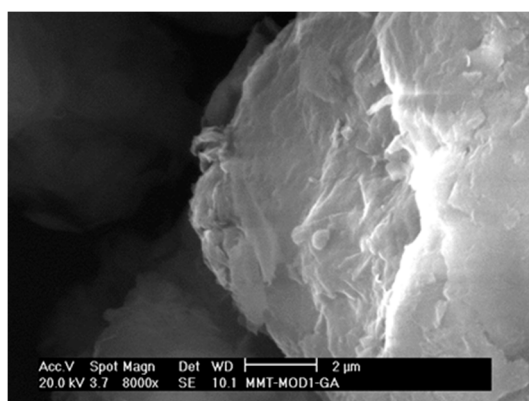


## Supplementary Materials: Nanoclays for Lipase Immobilization: Biocatalyst Characterization and Activity in Polyester Synthesis

Hale Öztürk, Eric Pollet, Vincent Phalip, Yüksel Güvenilir and Luc Avérous



**Figure S1.** SEM images of SEPMOD after immobilization of CALB and treatment with GA, at 8000× magnification.



**Figure S2.** SEM images of MMTMOD after immobilization of CALB and treatment with GA, at 8000× magnification.