

Supplementary Information

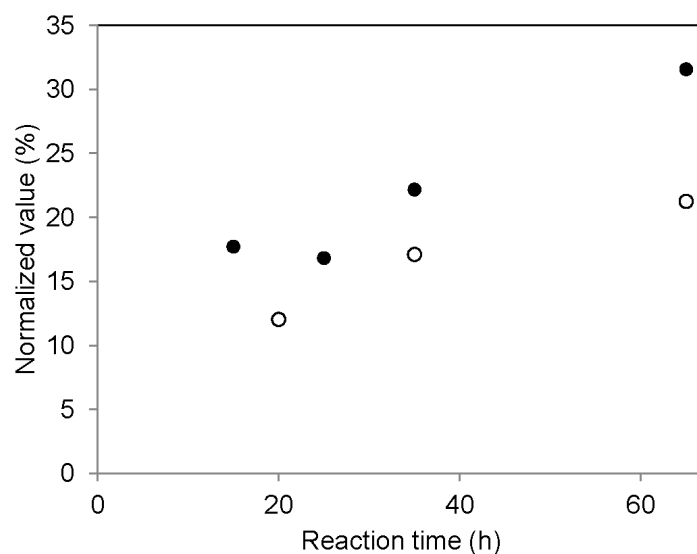


Figure S1. The ratio of racemization as a function of the reaction time at 150 (○) and 180 °C (●). Relative integrated intensity ratio of iii + iss/ssi to sis, isi, and iis/sii in the homonuclear decoupled ^1H NMR spectra.

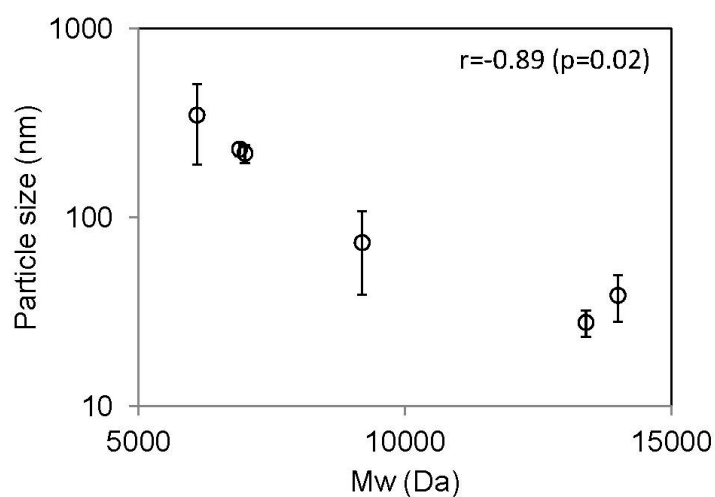


Figure S2. Relationship between M_w and particle size of PLA-PEG copolymers with different multiblock indexes.