

*Supplementary*

# **WZB117 Decorated Metformin-Carboxymethyl Chitosan Nanoparticles for Targeting Breast Cancer Metabolism**

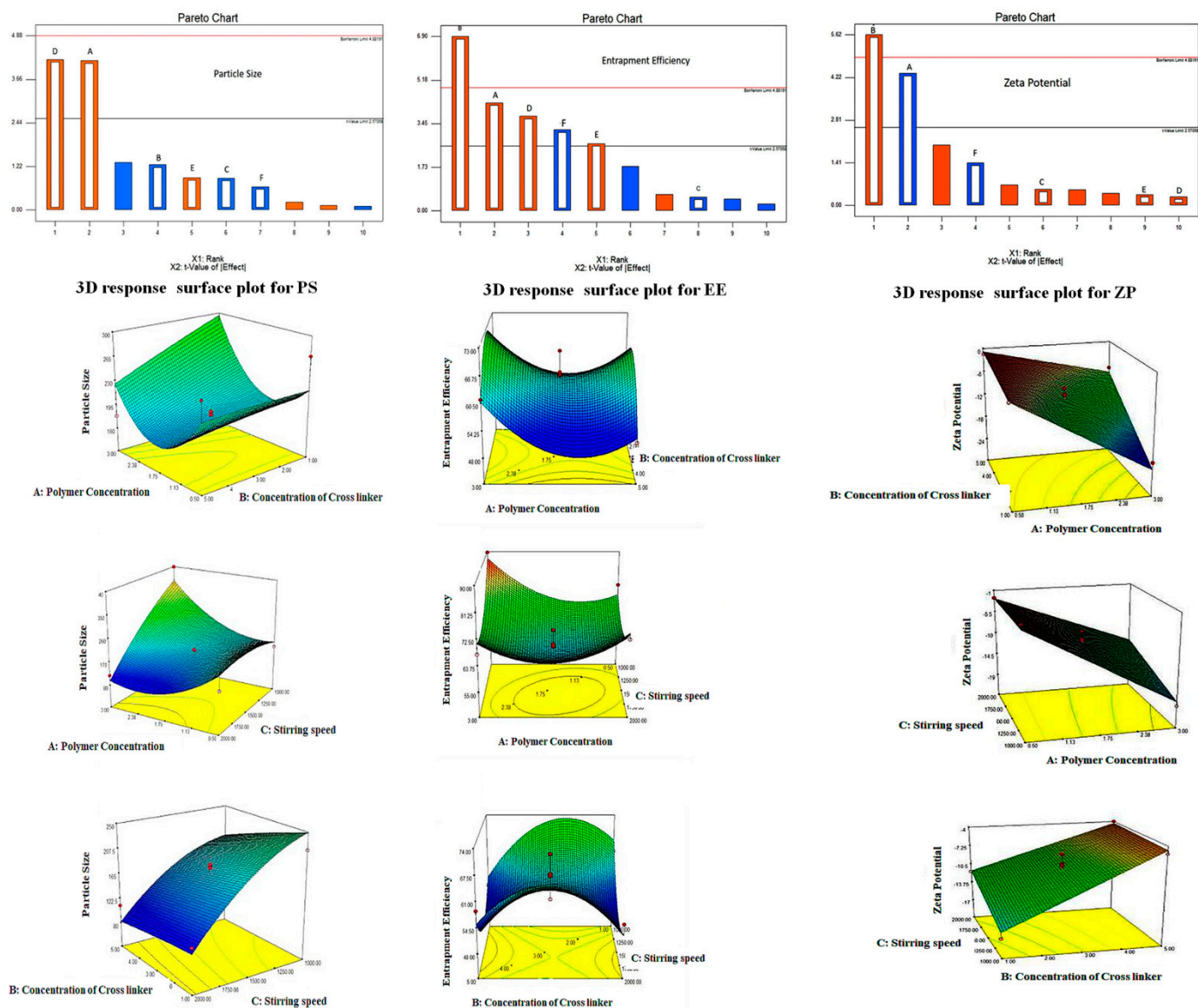
**Anindita De<sup>1,\*</sup>, Ashish Wadhwani<sup>2</sup>, Sauraj<sup>1</sup>, Parikshit Roychowdhury<sup>3</sup>, Ji Hee Kang<sup>1</sup>, Young Tag Ko<sup>1</sup> and Gowthamarajan Kuppusamy<sup>3,\*</sup>**

<sup>1</sup> College of Pharmacy, Gachon Institute of Pharmaceutical Science, Gachon University, Incheon 21936, Republic of Korea

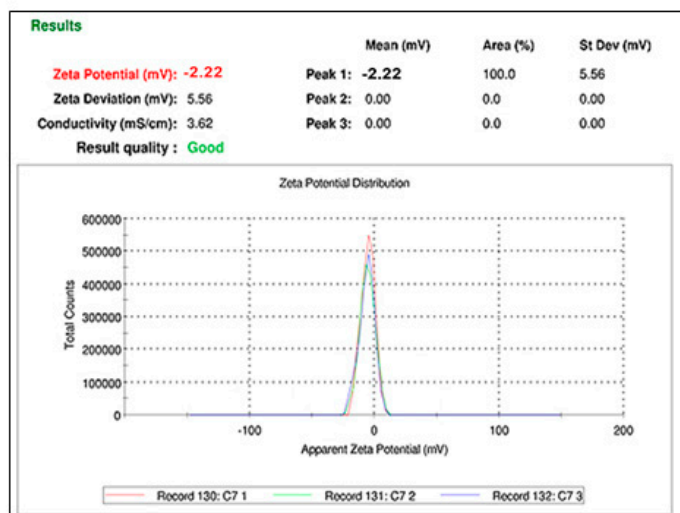
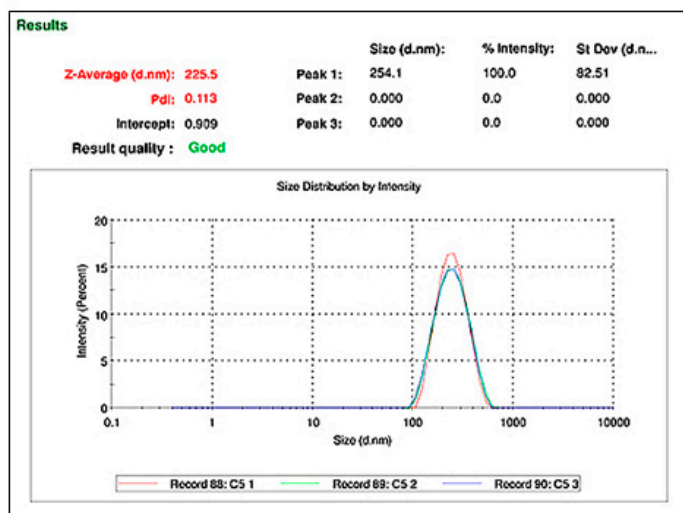
<sup>2</sup> Faculty of Health Sciences, School of Pharmacy, JSS Academy of Higher Education and Research, Mauritius, Droopnath Ramphul St, Vacoas-Phoenix 73304, Mauritius

<sup>3</sup> Department of Pharmaceutics, JSS College of Pharmacy, JSS Academy of Higher Education & Research, Ooty 643001, Tamil Nadu, India

\* Correspondence: aninditanirupa@gmail.com (A.D.); gowthamsang@jssuni.edu.in (G.K.); Tel.: +82-1098218750 (A.D.); +91-9443089812 (G.K.)



**Figure S1.** Pareto chart for Influence of independent variables on Particle size, Entrapment efficiency and Zeta potential, Box-Behnken Design of the 3D surface plot of independent variables on Particle size, Entrapment efficiency and Zeta potential.



**Figure S2.** Particle size and zeta potential of OCMC-MET Nps.

**Table S1:** % Swelling of OCMC-MET at different pH and time interval.

Time (h)	% swelling at pH 5.5	% swelling at pH 7.4
0.5	10.33±1.1	1.50±0.42
1.0	43.23±6.56	10.0±2.56
5.0	76.66±16.8	32.23±5.6