

## Supplementary Materials

# Structure-bioactivity relationship of the functionalized polysulfone with triethylphosphonium pendant groups: Perspective for biomedical applications

Adina Maria Dobos<sup>1</sup>, Adriana Popa<sup>2</sup>, Cristina Mihaela Rimbu<sup>3</sup> and Anca Filimon<sup>1,\*</sup>

<sup>1</sup>Department of Polycondensation and Thermally Stable Polymers, "Petru Poni" Institute of Macromolecular Chemistry, 700487 Iasi, Romania

<sup>2</sup>Coriolan Dragulescu" Institute of Chemistry, Mihai Viteazul Blv., 300223 Timisoara, Romania

<sup>3</sup>Department of Public Health, Faculty of Veterinary Medicine, "Ion Ionescu de la Brad", University of Agricultural Sciences and Veterinary Medicine, 8, Mihail Sadoveanu Alley, 707027 Iasi, Romania

\* Correspondence: [afilimon@icmpp.ro](mailto:afilimon@icmpp.ro)

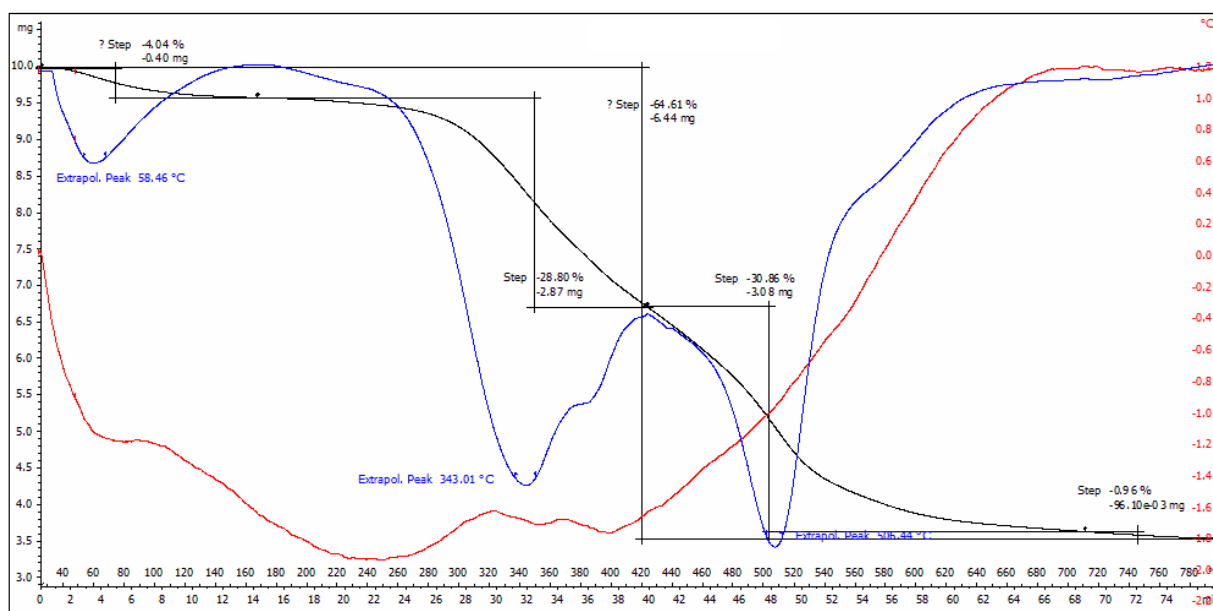
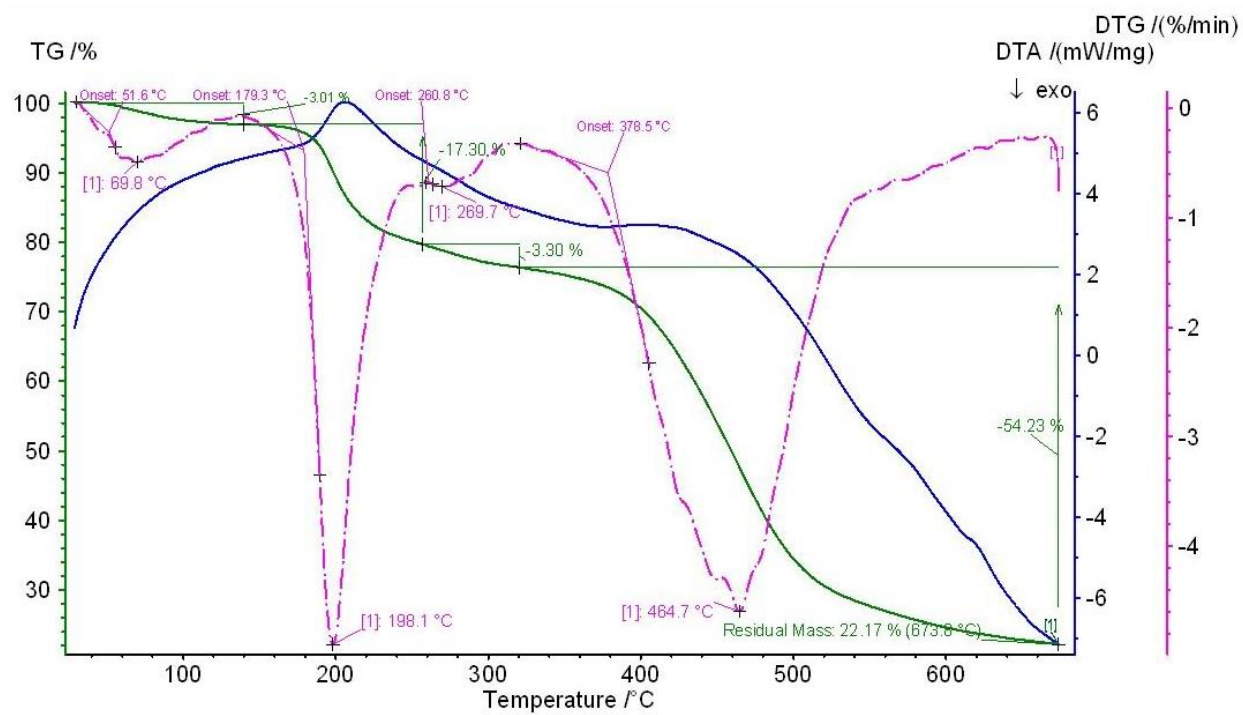


Figure S1. Experimental TG/DTG curves of PSFetP<sup>+</sup> sample.



**Figure S2.** Experimental TG/DTG curves of PSFQ sample [46].