

Supplementary Material: Bisphenol A Diglycidyl Ether-Primary Amine Cooligomer-poly(ϵ -caprolactone) Networks: Synthesis and Characterization

Katalin Czifrák, Csilla Lakatos, Gabriella Szabó, Bence Vadkerti, Lajos Daróczi, Miklós Zsuga and Sándor Kéki

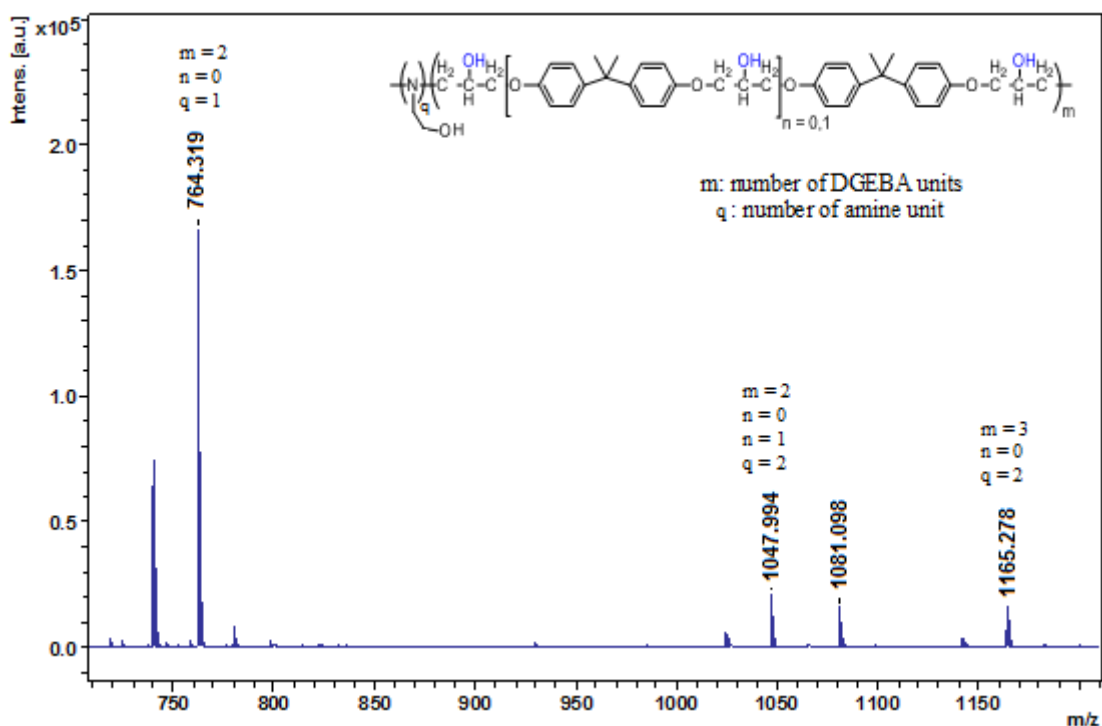


Figure S1. MALDI-TOF MS spectrum of DGEBA-EA / 1:0.2 cooligomer after 2 hrs.

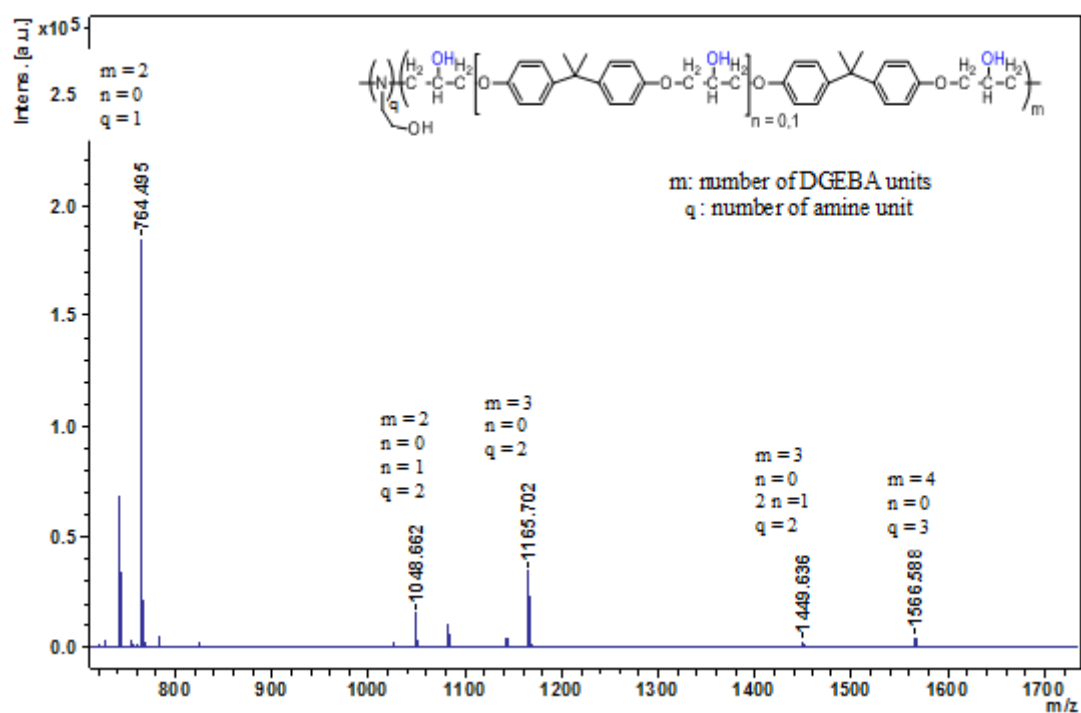


Figure S2. MALDI-TOF MS spectrum of DGEBA-EA / 1:0.3 cooligomer after 2 hrs.

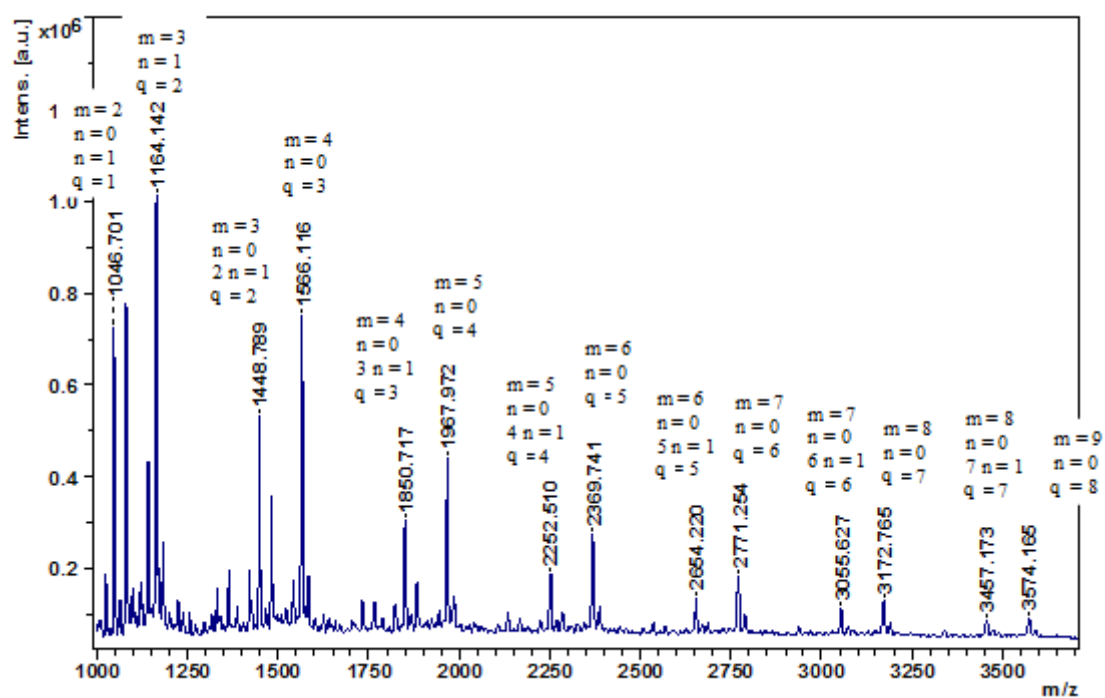


Figure S3. MALDI-TOF MS spectrum of DGEBA-EA / 1:0.3 cooligomer after 2 hrs in linear mode.

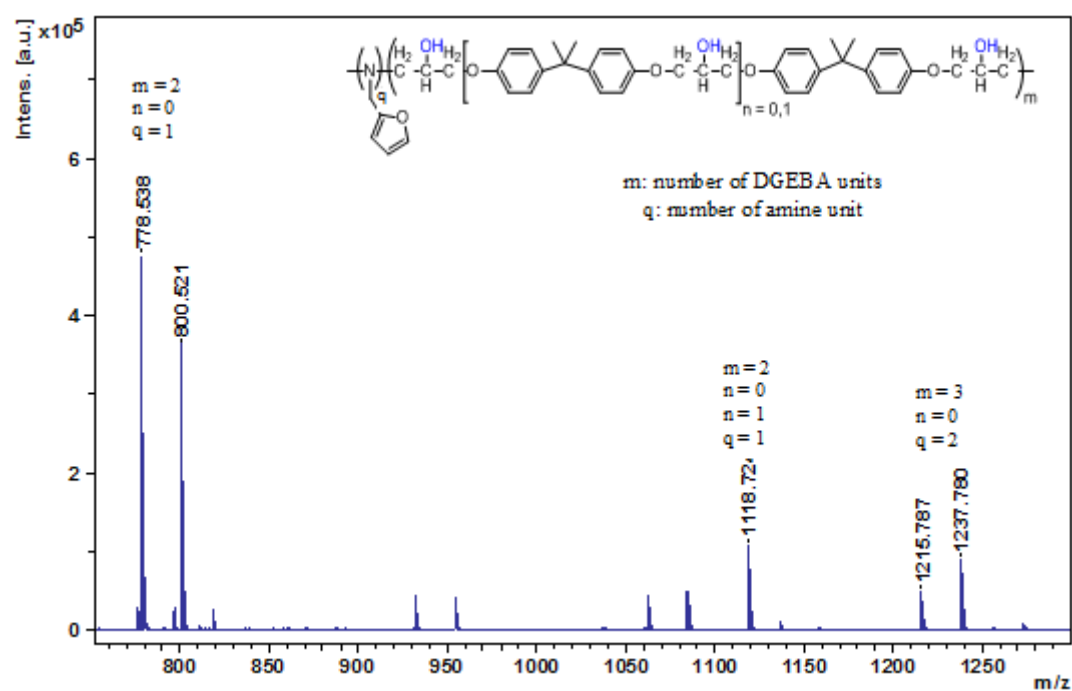


Figure S4. MALDI-TOF MS spectrum of DGEBA-FA / 1:0.1 cooligomer after 2 hrs.

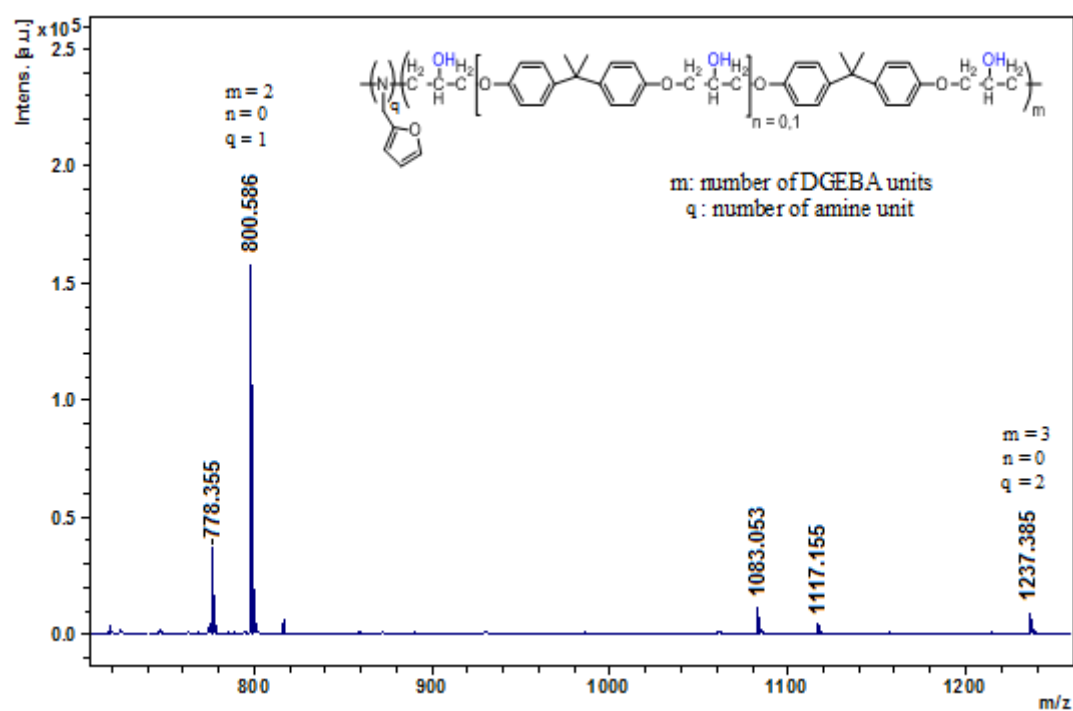


Figure S5. MALDI-TOF MS spectrum of DGEBA-FA / 1:0.2 cooligomer after 2 hrs.

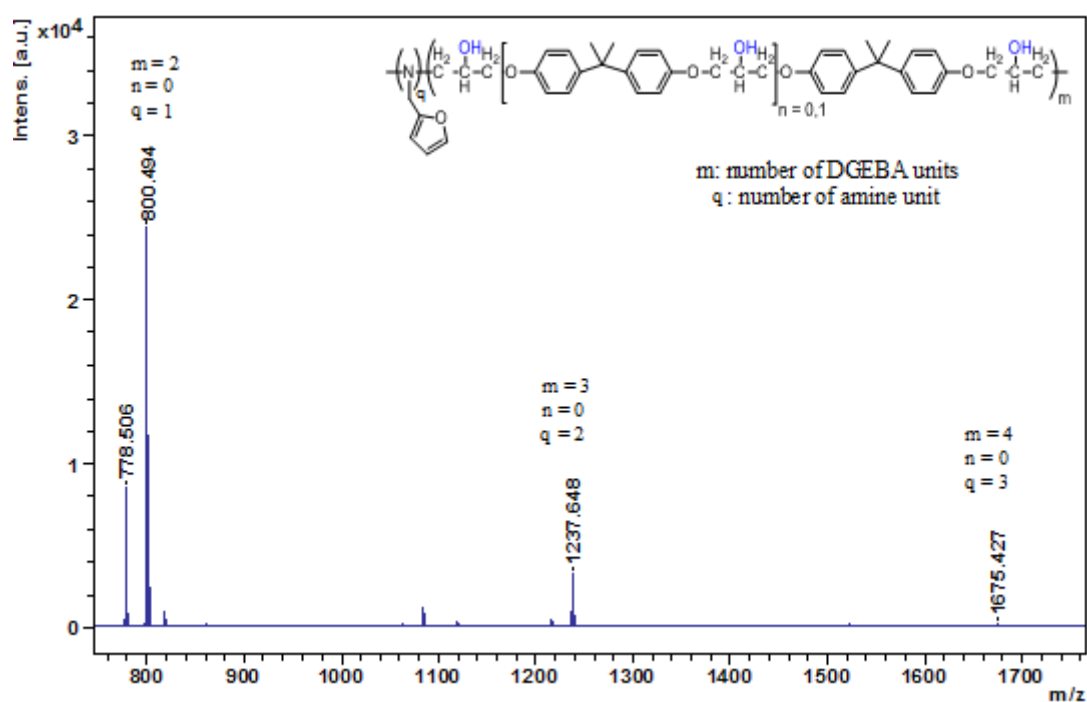


Figure S6. MALDI-TOF MS spectrum of DGEBA-FA / 1:0.3 cooligomer after 2 hrs.

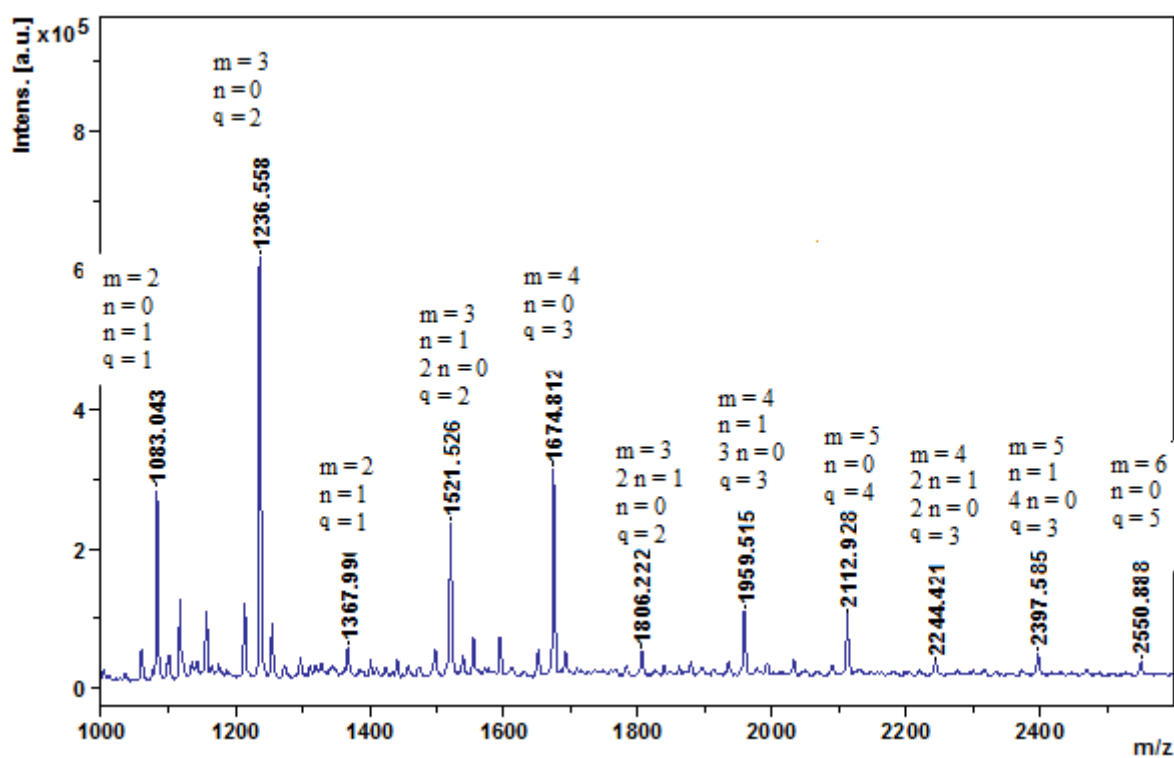


Figure S7. MALDI-TOF MS spectrum of DGEBA-FA / 1:0.3 cooligomer after 2 hrs in linear mode.

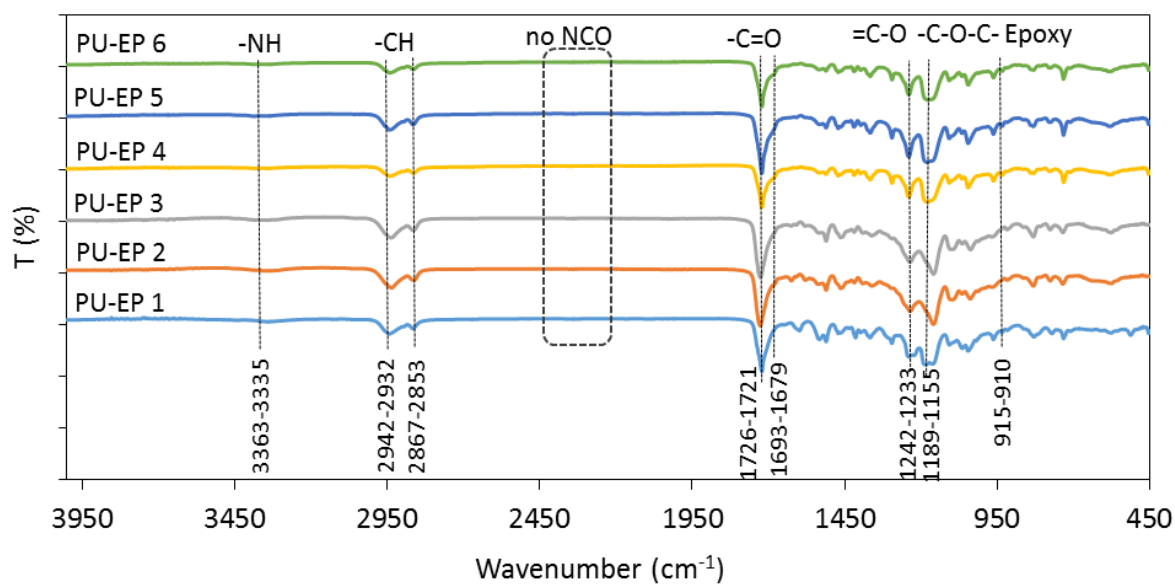


Figure S8. The IR spectra of PU-EPs 1-6.

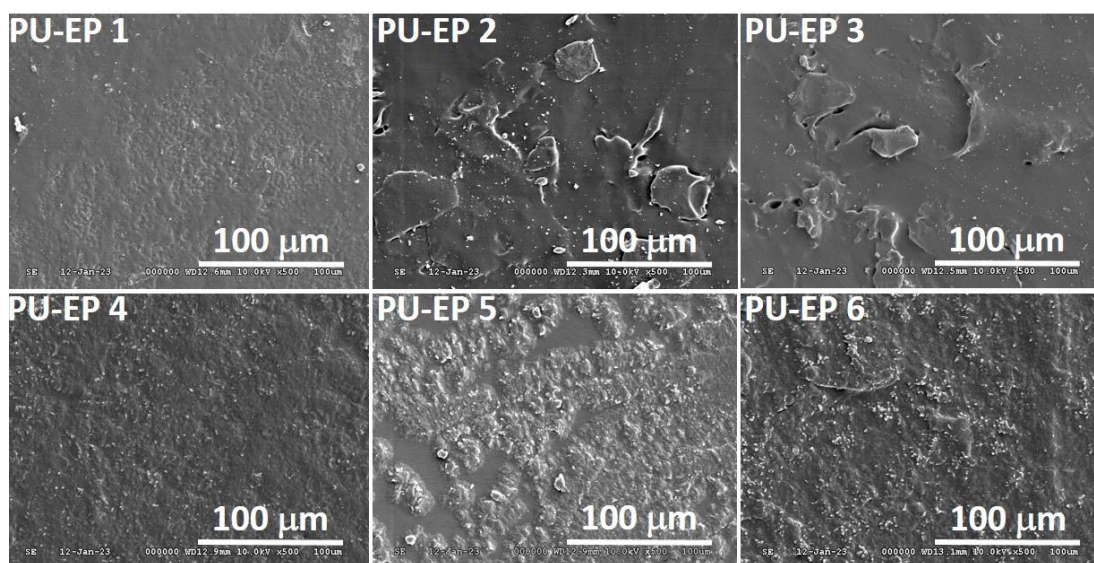


Figure S9. SEM images of samples PU-EPs 1-6.

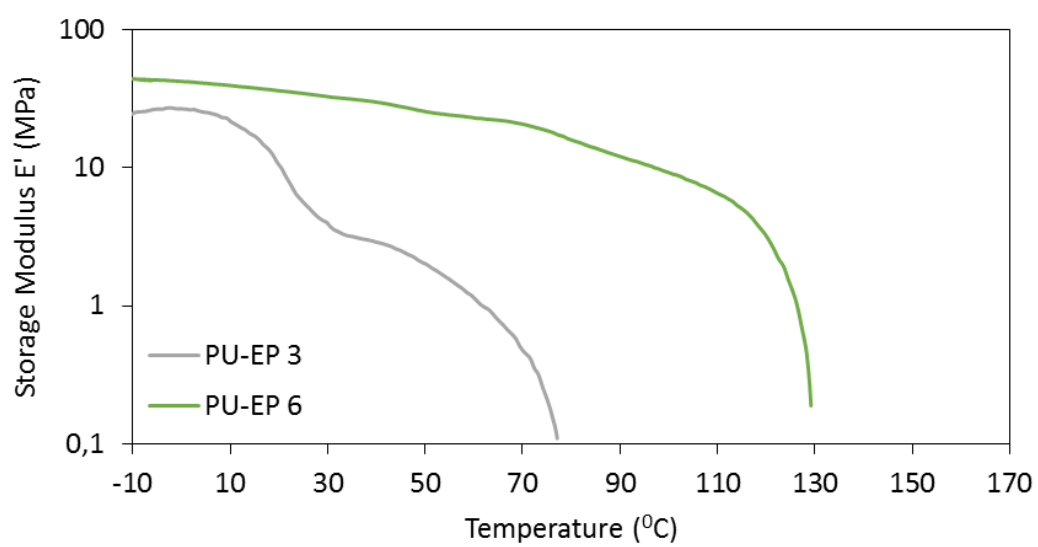


Figure S10. Storage modulus curves of PU-EPs 3 and 6.