

## SUPPORTING INFORMATION

### *Research Article*

### **Significant electromechanical characteristic enhancement of coaxial electrospinning core-shell fibers**

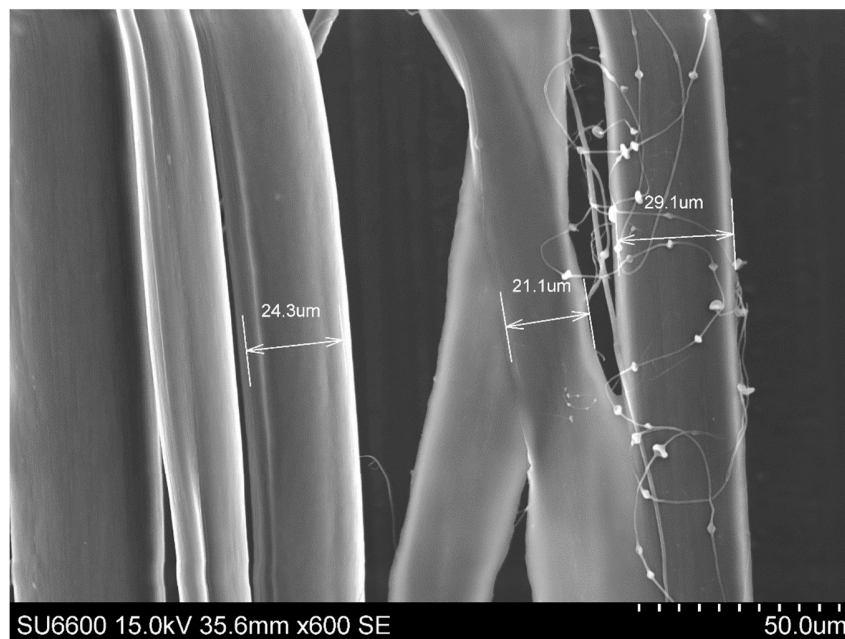


Figure S1. SEM photograph of electrospun bundles fibers with core-shell fibers, single PBLG fibers and the beads.

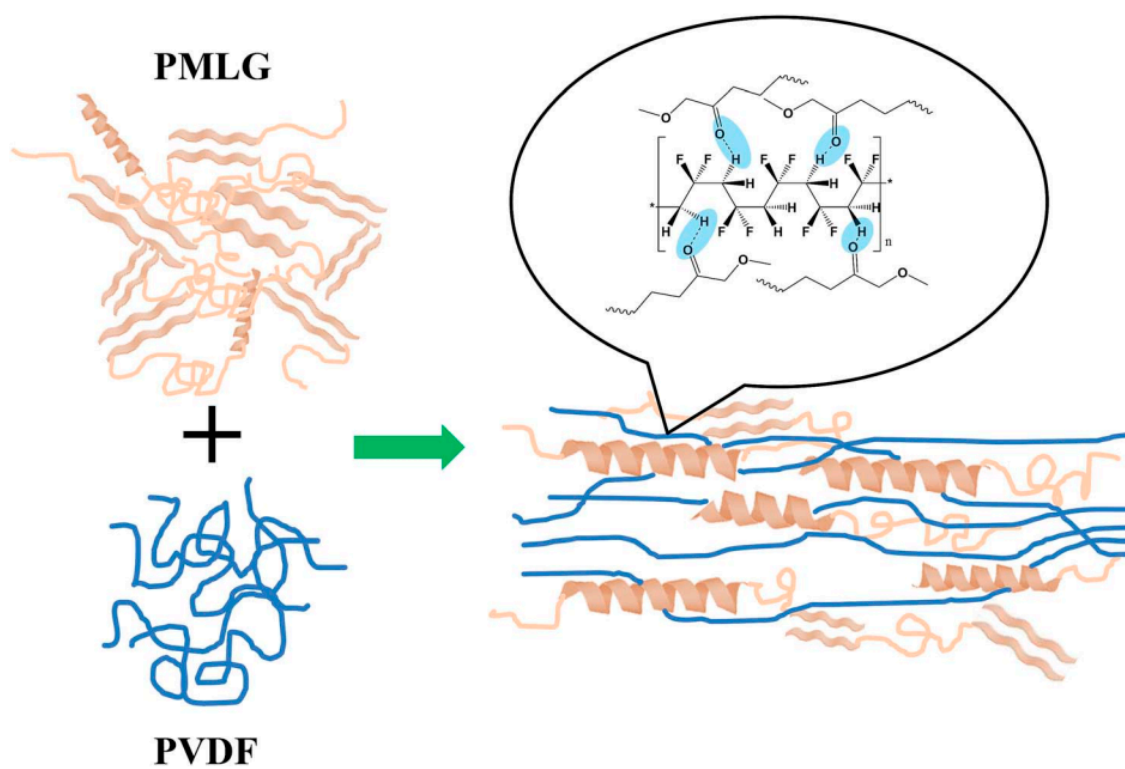


Figure S2. Conformation changes and specific interaction between PVDF and PMLG fibers – suggested by Cheng-Tang Pan *et al*