

Supporting Information for

# Investigation of Ferromagnetic and Ferroelectric Properties in Binderless Cellulose/Ni Laminates for Magnetoelectric Applications

Manseong Song and Su-Chul Yang\*

Department of Chemical Engineering (BK21 FOUR), Dong-A University, Busan, 49315, South Korea

\* Correspondence: scyang@dau.ac.kr

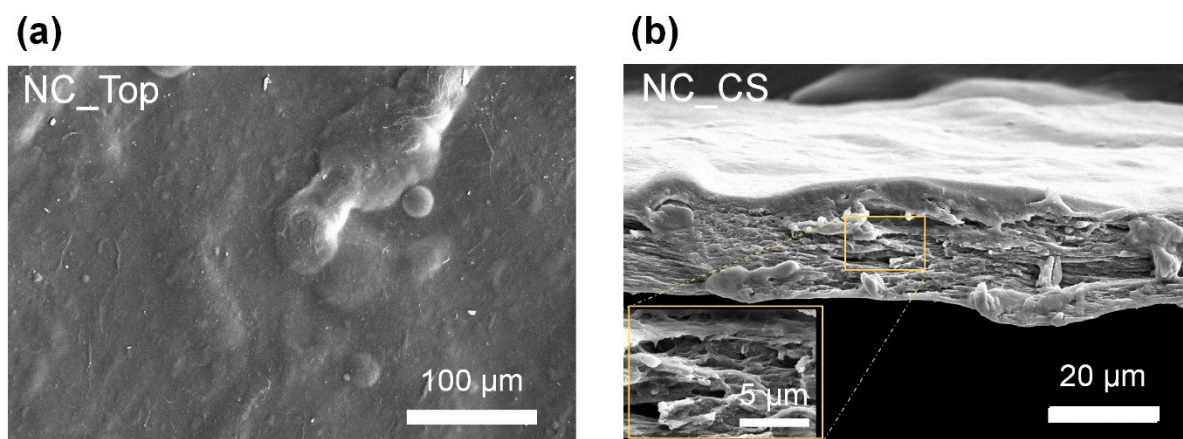


Figure S1. FE-SEM images of (a) top-view and (b) cross-view morphology of NC. The inset shows magnification image of stacked structure of NC.