

Supplementary

Immobilization Systems of Antimicrobial Peptide Ib-M1 in Polymeric Nanoparticles Based on Alginate and Chitosan

Carlos Enrique Osorio-Alvarado ^{1,*}, Jose Luis Ropero-Vega ¹, Ana Elvira Farfán-García ²
and Johanna Marcela Flórez-Castillo ^{1,*}

¹ Universidad de Santander, Facultad de Ciencias Naturales, Ciencias Básicas y Aplicadas para la Sostenibilidad-CIBAS, Calle 70 No. 55-210, Bucaramanga 680003, Colombia; jose.ropero@udes.edu.co

² Universidad de Santander, Facultad de Ciencias Médicas y de la Salud, Instituto de Investigación Masira, Calle 70 No. 55-210, Bucaramanga 680003, Colombia; afarfan@udes.edu.co

* Correspondence: c.osorio1202@gmail.com (C.E.O.-A.); johanna.florez@udes.edu.co (J.M.F.-C.); Tel.: +57-7606-516500 (ext. 1665) (J.M.F.-C.)

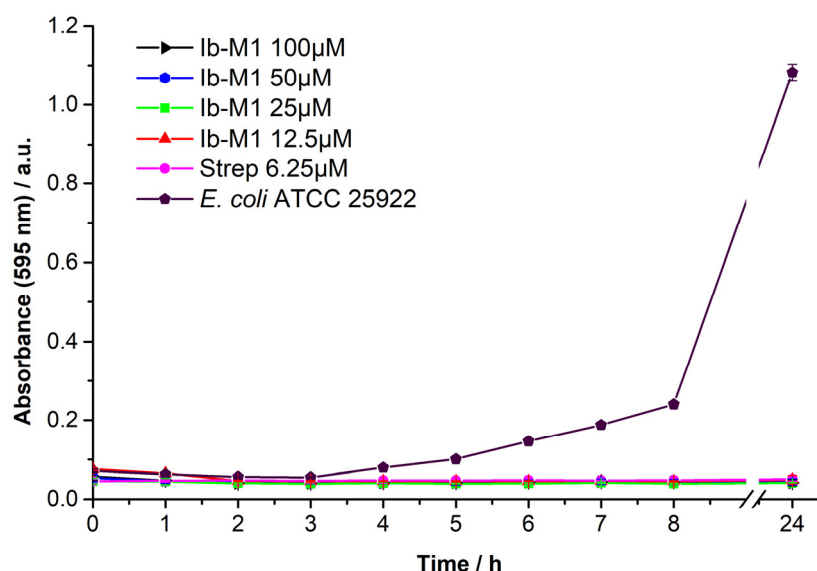


Figure S1. A. Growth kinetics of *E. coli* ATCC 25922 in the presence of peptide Ib-M1 at concentrations of 100 μ M (\blacktriangleright), 50 μ M (\bullet), 25 μ M (\blacksquare), 12.5 μ M (\blacktriangle), streptomycin used as reference antibiotic 6.25 μ M (\bullet), *E. coli* as growth control (\blacklozenge).

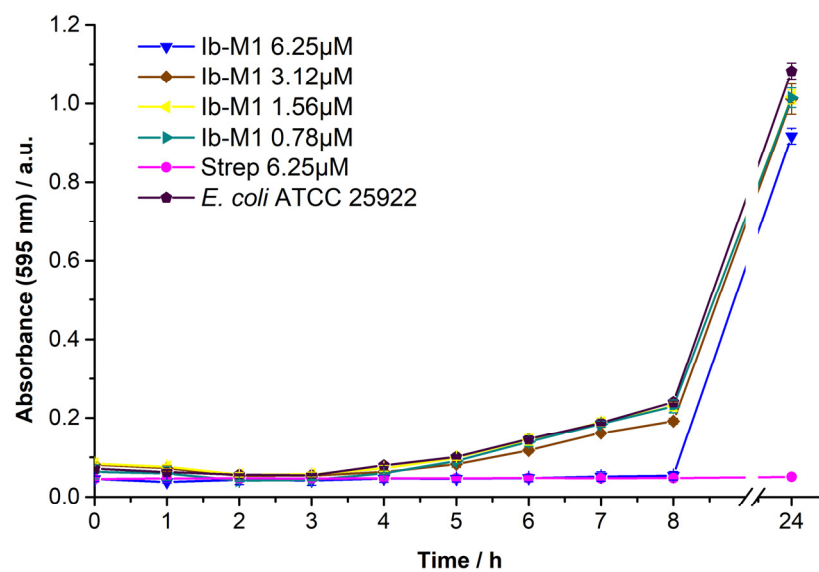


Figure S1. B. Growth kinetics of *E. coli* ATCC 25922 in the presence of peptide Ib-M1 at concentrations 6.25µM (▼), 3.12 µM (◆), 1.56 µM (▲), 0.78 µM (▸), streptomycin used as reference antibiotic 6.25 µM (●), *E. coli* as growth control (◆).