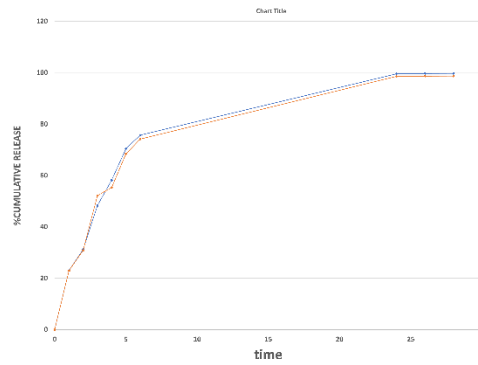
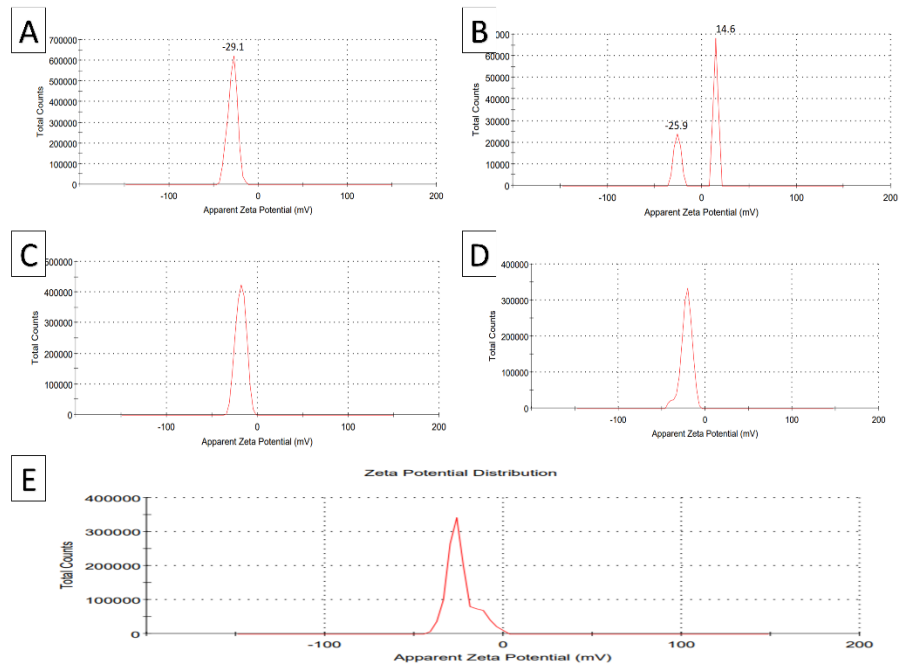


## Supplementary Materials:



**Figure S1.** In vitro release profile of curcumin- $\beta$ -cyclodextrin complex compared to curcumin-loaded nanosponge.



**Figure S2.** Zeta potentials of (A) raw  $\beta$ -cyclodextrin, (B) curcumin- $\beta$ -cyclodextrin complex, (C) plain NS4, (D) curcumin-loaded NS4, and (E) raw curcumin.