

Supplementary Files

Comparison of Scaffolds Fabricated via 3D Printing and Salt Leaching: In-vivo Imaging, Biodegradation, and Inflammation

Doo Yeon Kwon, Joon Yeong Park, Bun Yeoul Lee, Moon Suk Kim*

¹ Department of Molecular Science and Technology, Ajou University, Suwon, Korea; kdy@ajou.ac.kr (D.Y.K.); pjy16@ajou.ac.kr (J.Y.P.); bunyeoul@ajou.ac.kr (B.Y.L.)

* Correspondence; moonskim@ajou.ac.kr (M.S.K.); Tel.: +82-31-219-2608 (M.S.K.)

† Doo Yeon Kwon and Joon Yeong Park are equal first authors.

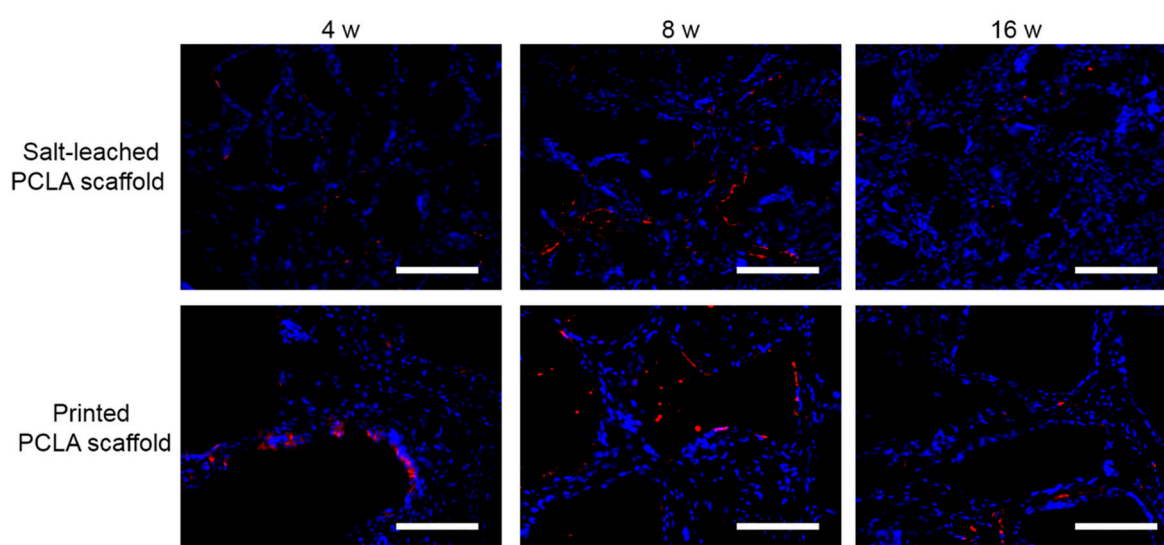


Figure S1. Immunofluorescence ED1 staining images on salt-leached and printed PCLA scaffolds four, eight, and sixteen weeks after implantation. Scale bars = 100 μ m.