

Supplementary Materials

New Voltammetric Sensor Based on LDH and H₂O₂ for L-Proline Determination in Red and White Wines

Mauro Tomassetti ^{1,2,*}, Claudio Leonardi ³, Riccardo Pezzilli ³, Giuseppe Prestopino ³, Corrado Di Natale ¹ and Pier Gianni Medaglia ³

¹ Department of Electronic Engineering, University of Rome "Tor Vergata", Via del Politecnico 1, 00133 Rome, Italy

² Department of Chemistry, University of Rome, "La Sapienza", P.le A. Moro 5, 00185 Rome, Italy

³ Department of Industrial Engineering, University of Rome "Tor Vergata", Via del Politecnico 1, 00133 Rome, Italy

* Correspondence: mauro.tomassetti@uniroma1.it

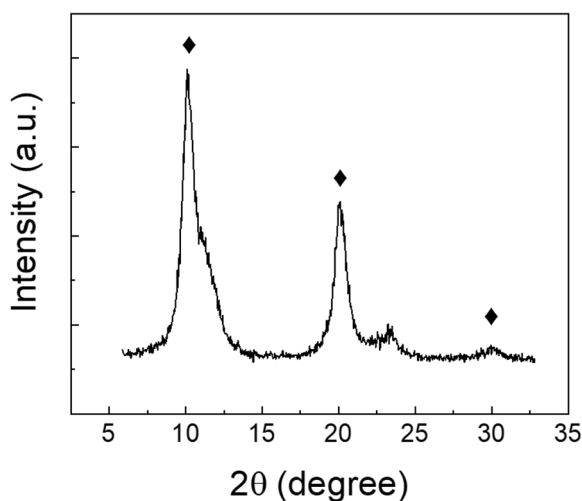


Figure S1. X-ray diffraction patterns of LDH obtained by the coprecipitation method. The main basal reflections of (Zn-Al-NO₃) LDH phase are labelled by diamonds (♦).

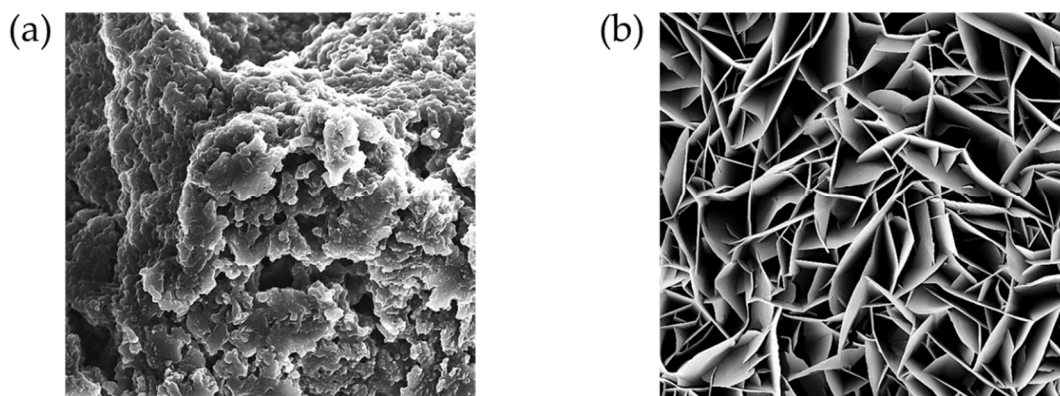


Figure S2. SEM images of (Zn-Al-NO₃) LDH obtained by: (a) coprecipitation method; (b) grown in situ by hydrothermal method.