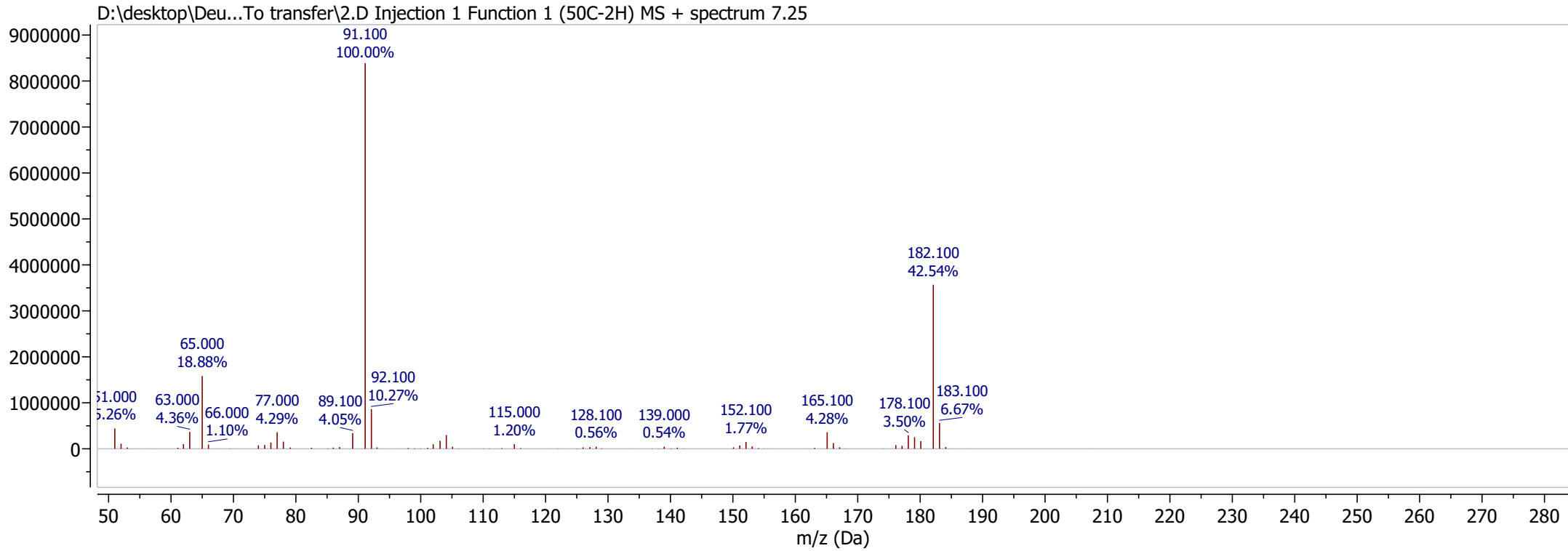
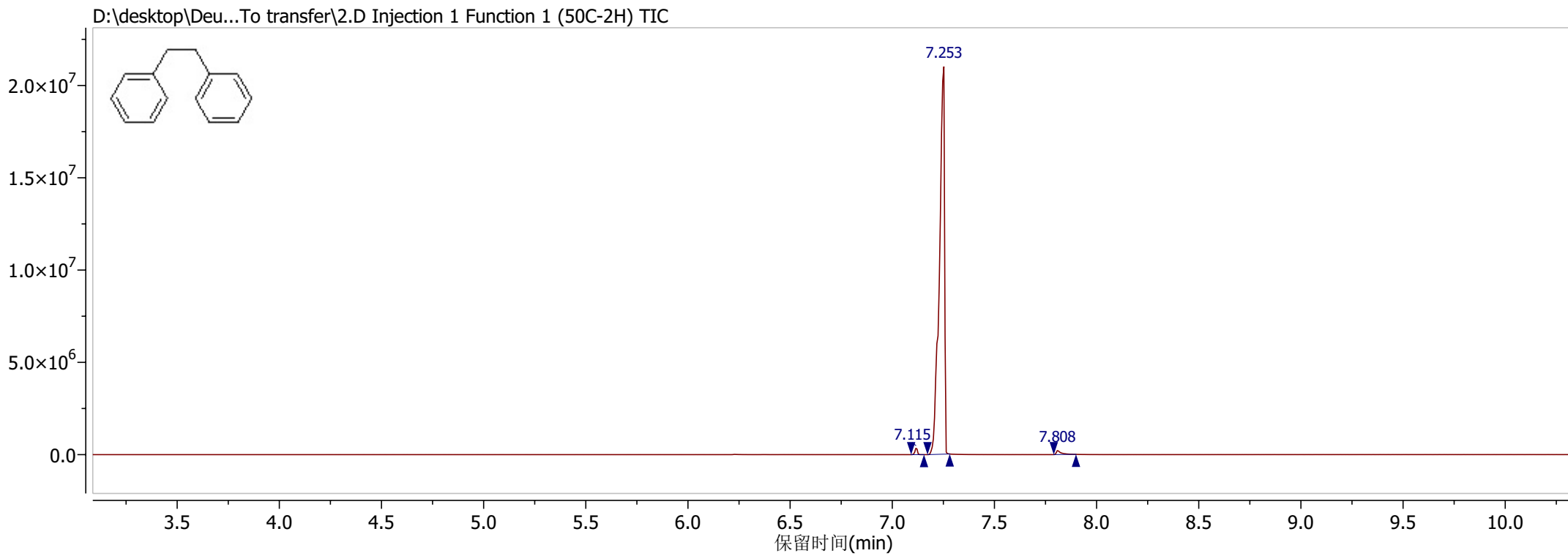


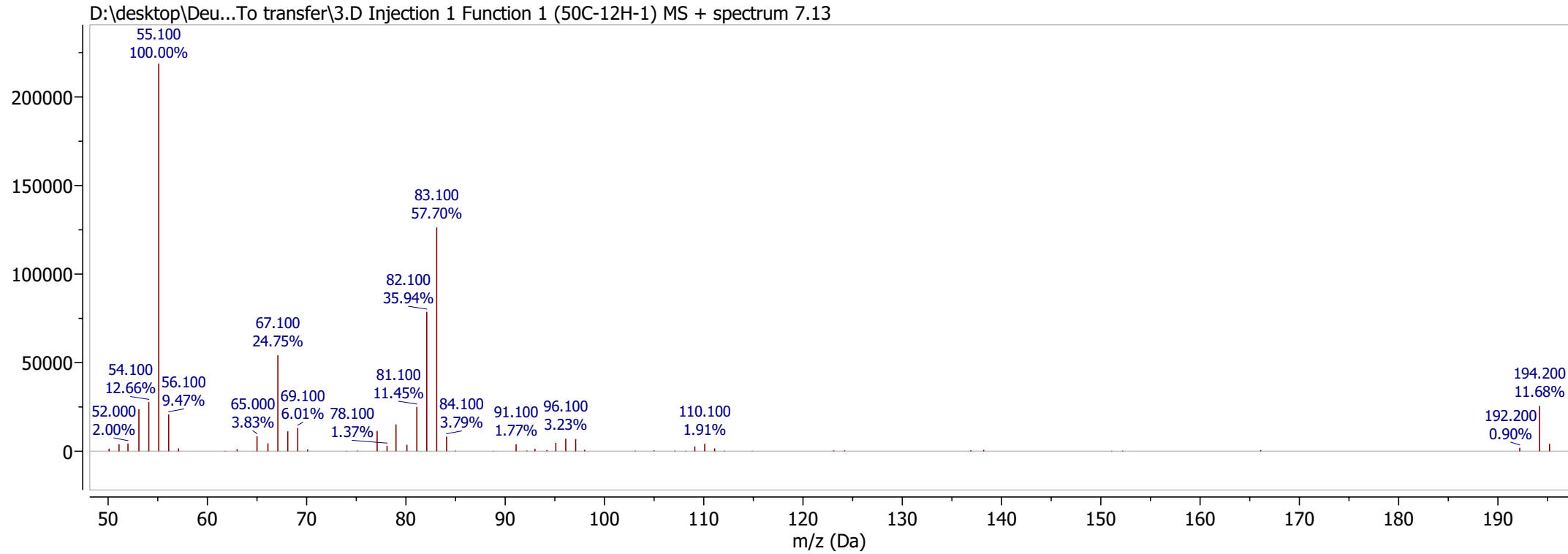
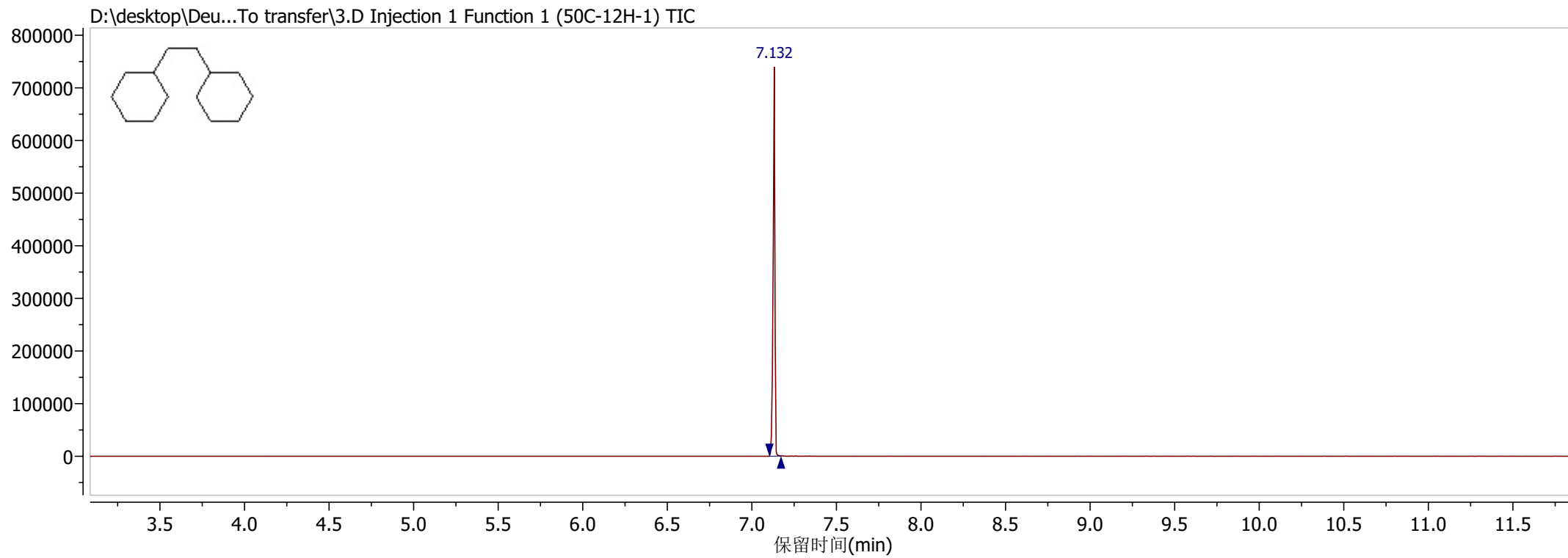
Supplementary Materials to

Rh-Catalyzed Environmentally Benign Selective Hydrogenation of a Broad Variety of Functional Groups Using Al-Water as a Hydrogen Source

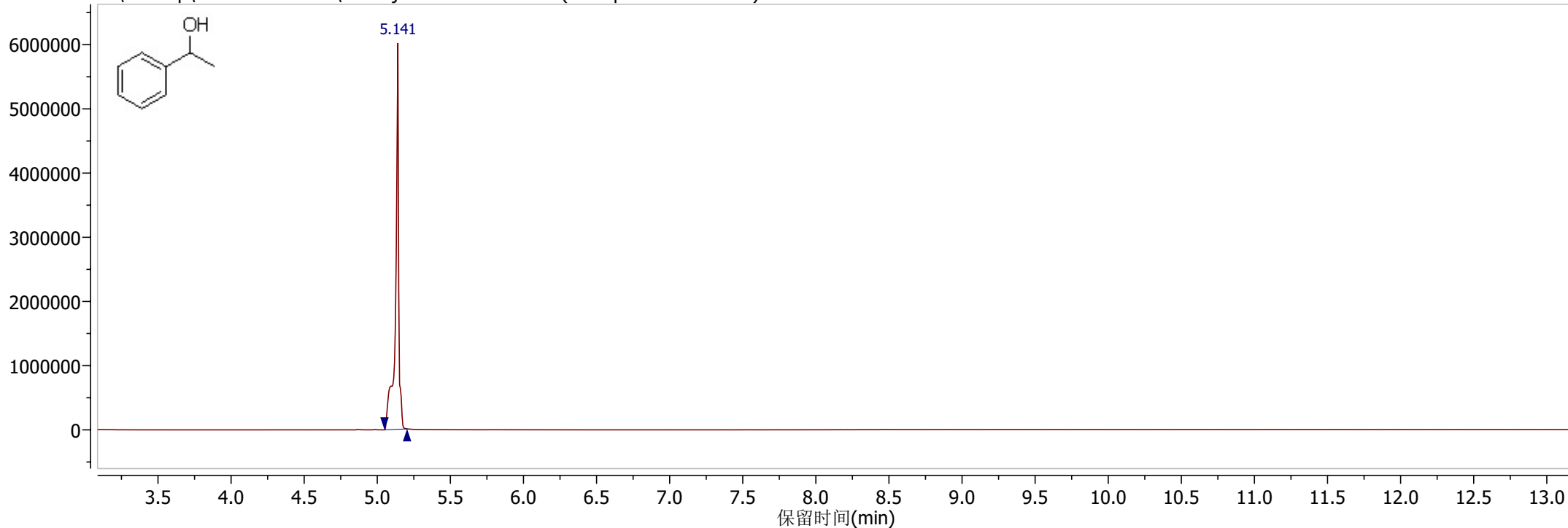
by Guoshu Xie and Béla Török *

The Supplementary Materials include the mass spectra of the products on pages 2-23.

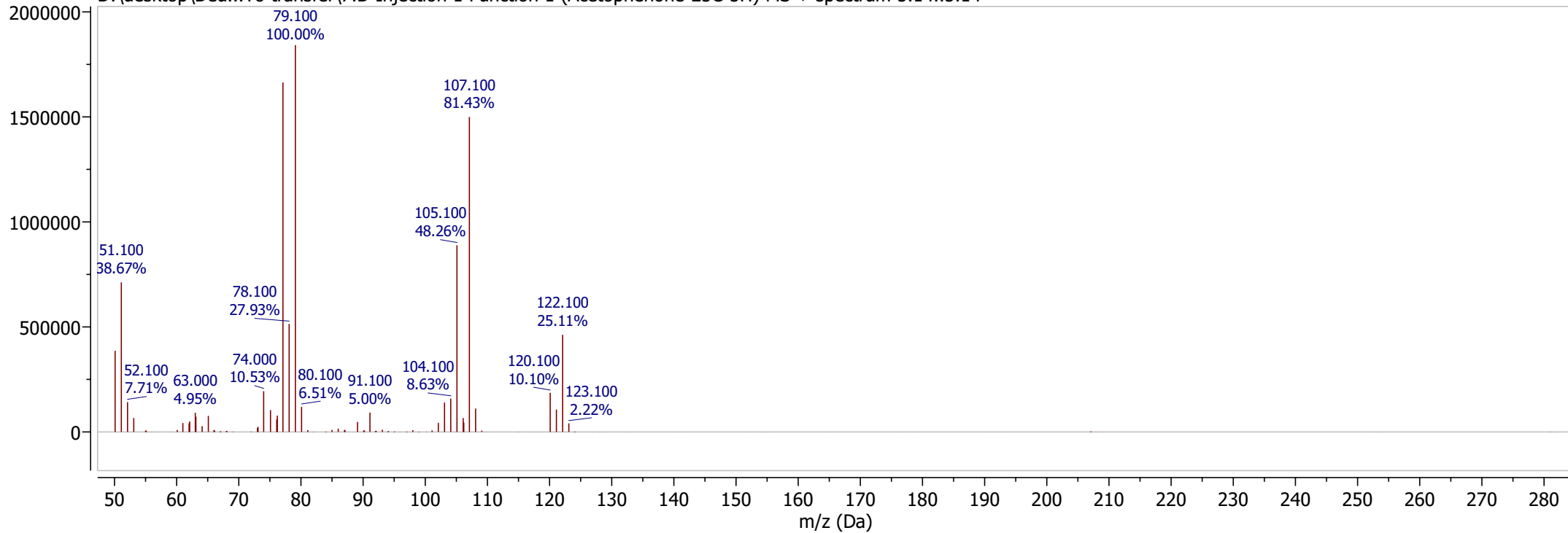


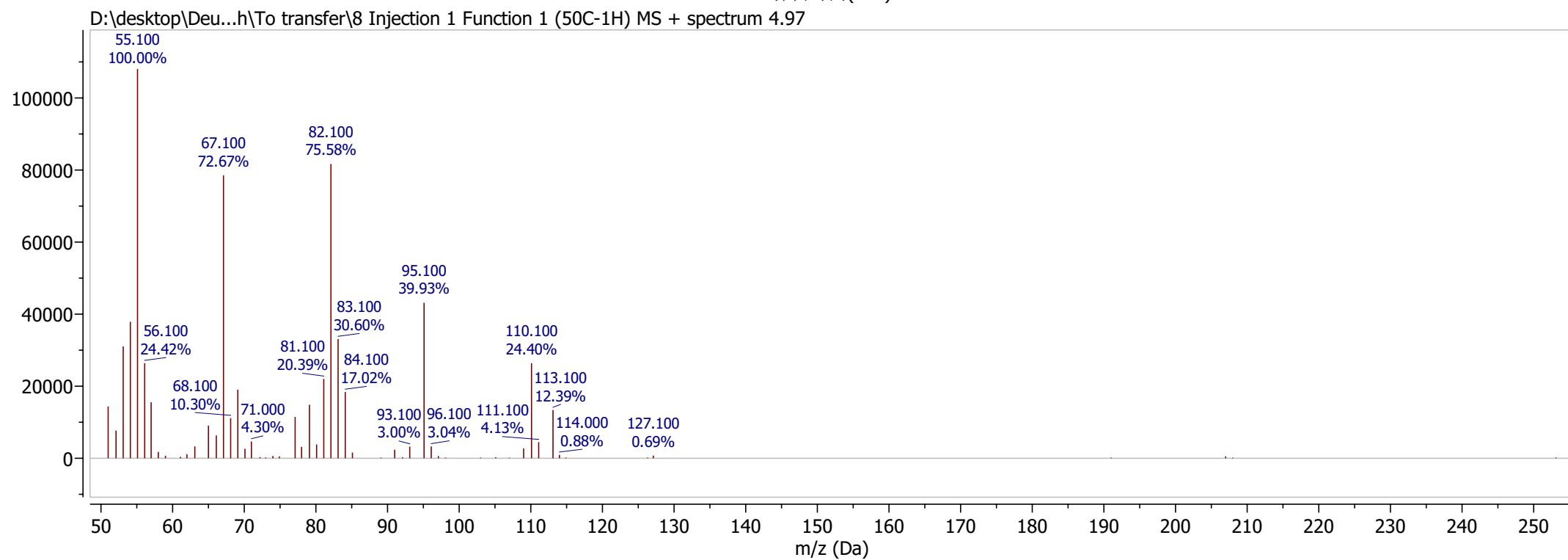
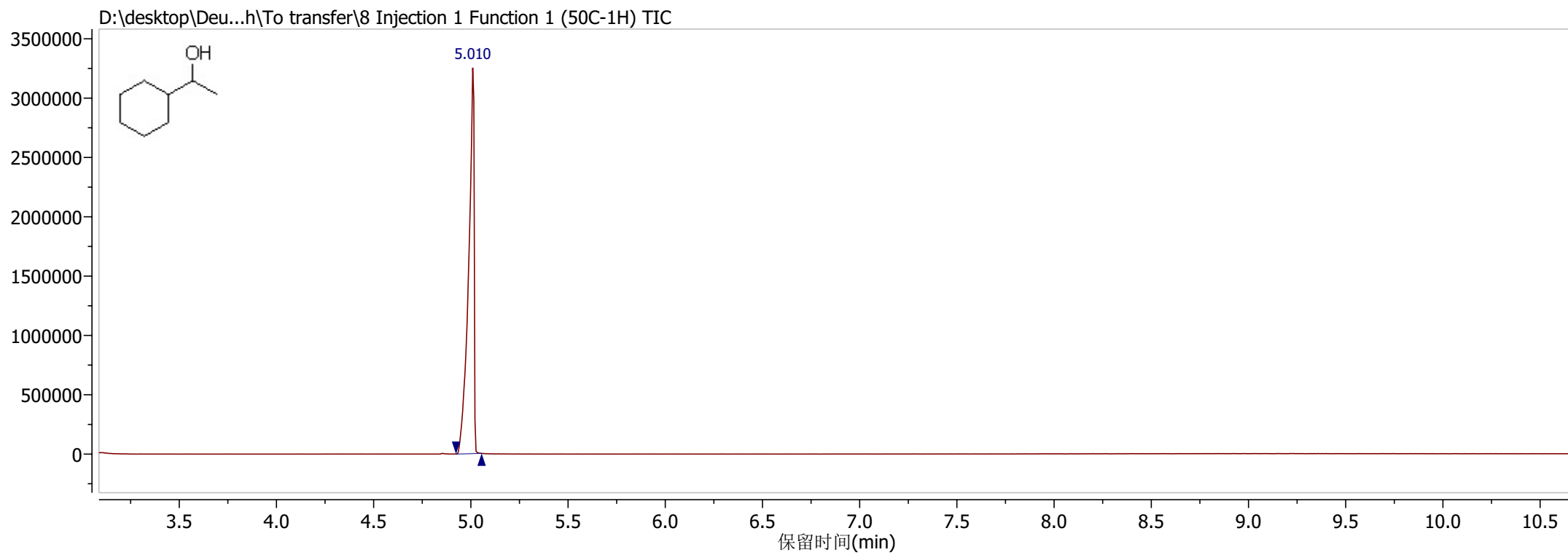


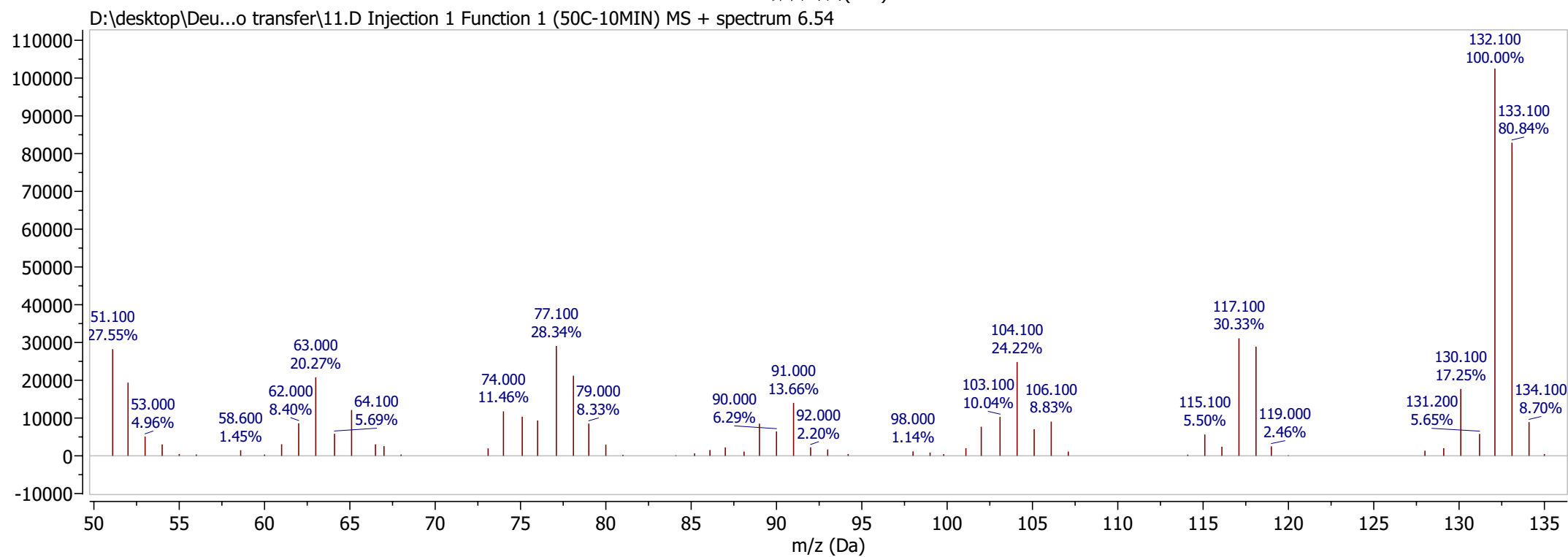
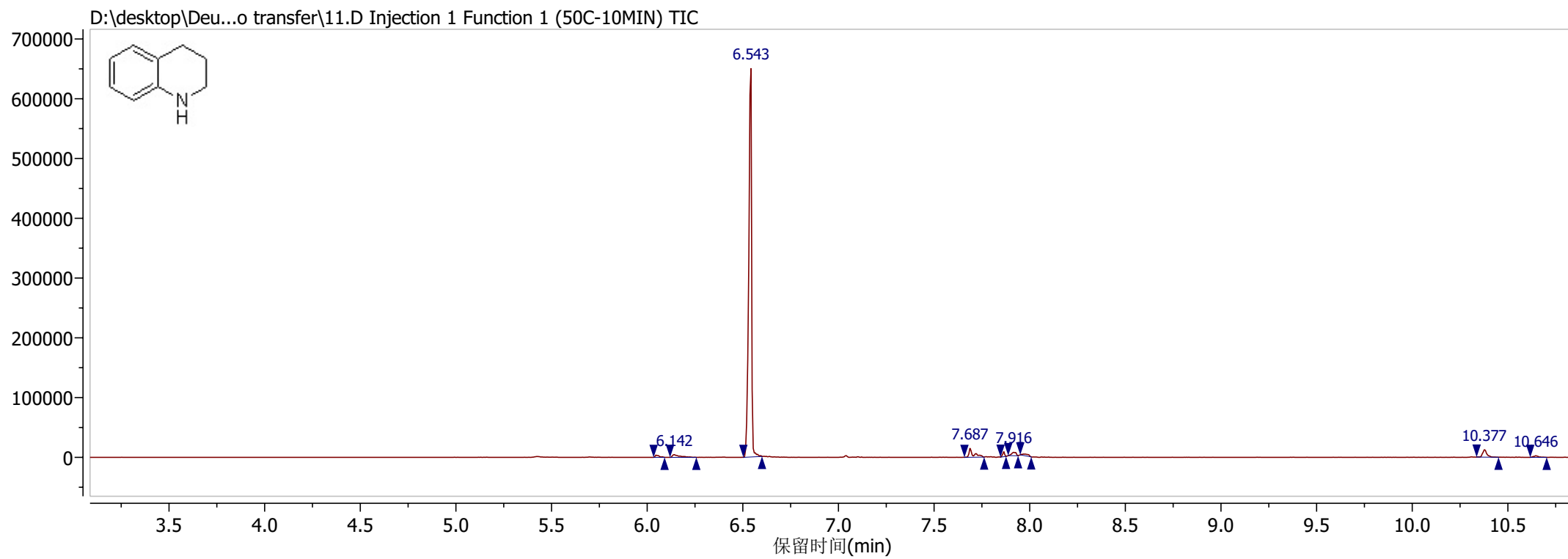
D:\desktop\Deu...To transfer\7.D Injection 1 Function 1 (Acetophenone-25C-5H) TIC



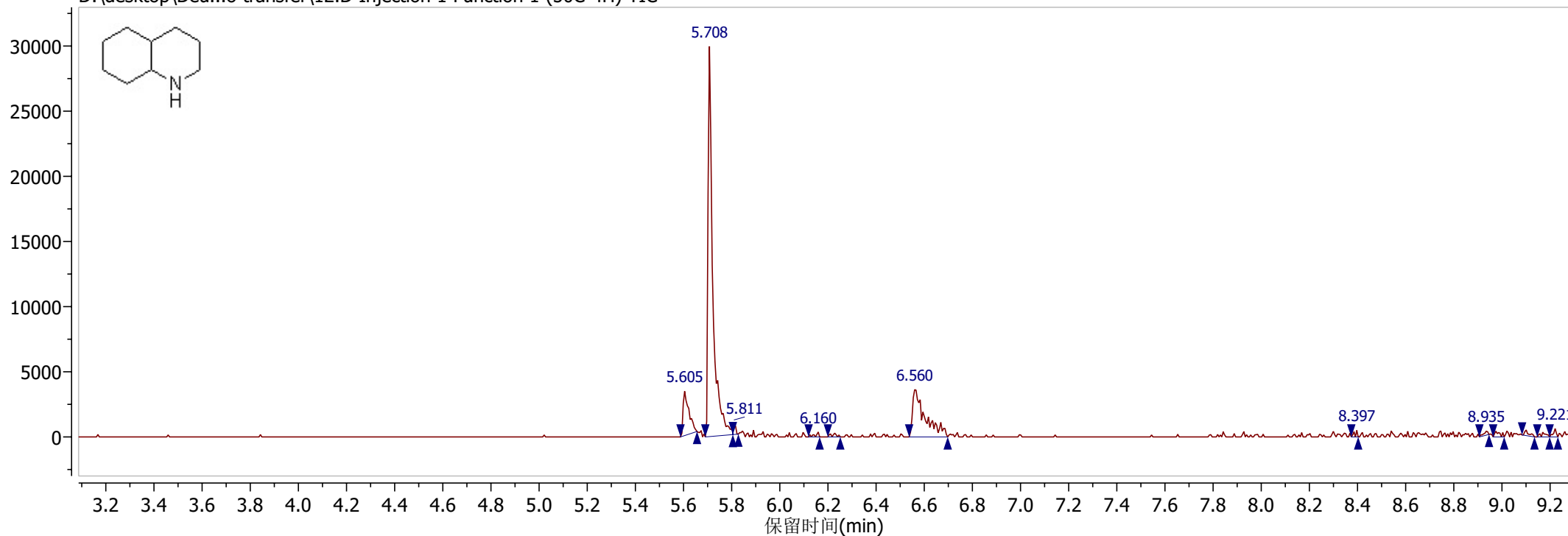
D:\desktop\Deu...To transfer\7.D Injection 1 Function 1 (Acetophenone-25C-5H) MS + spectrum 5.14..5.14



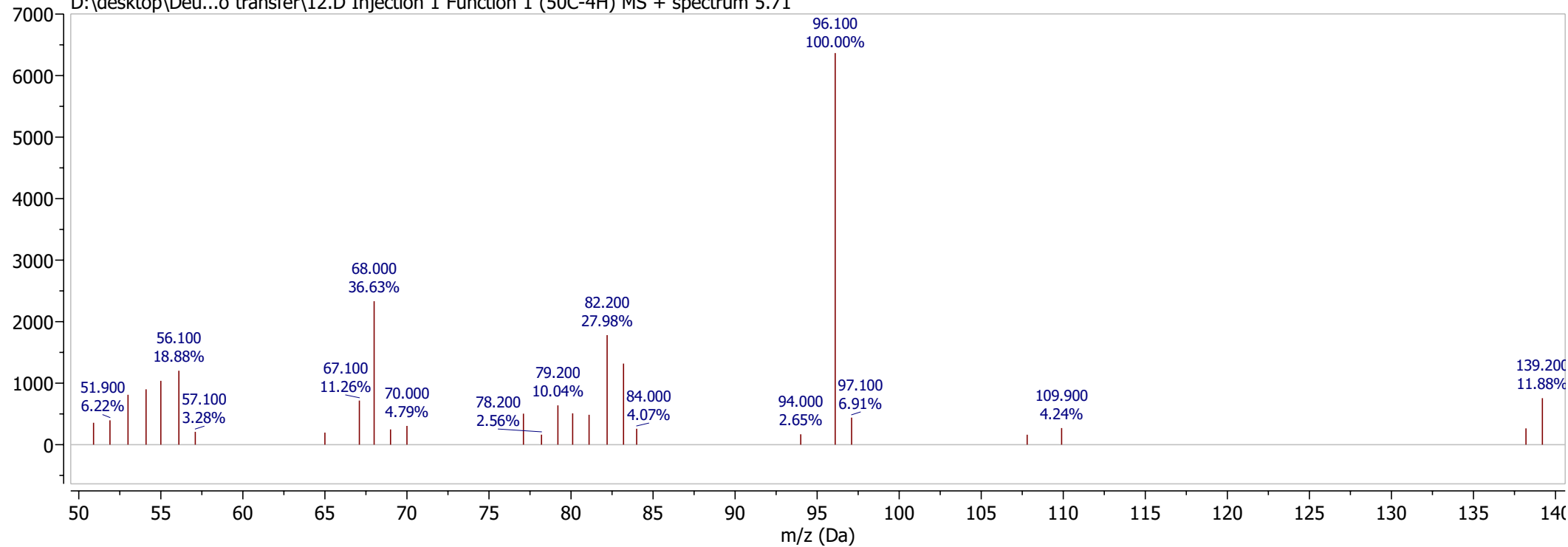


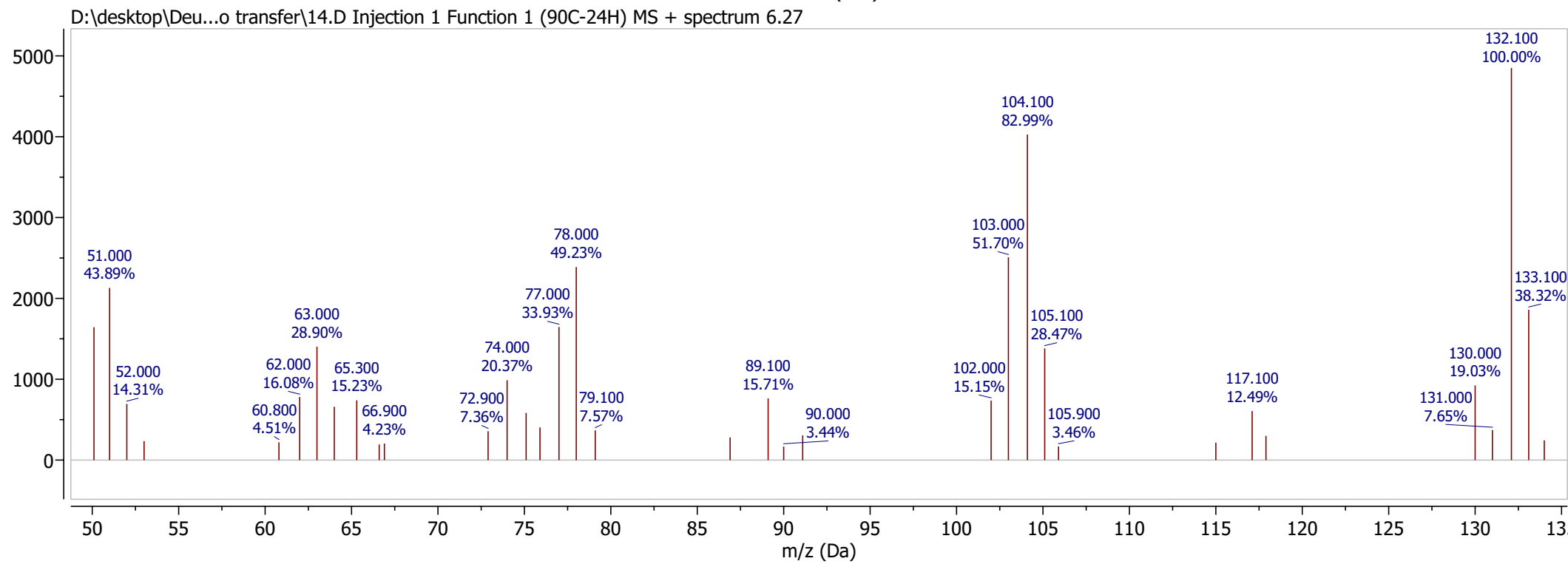
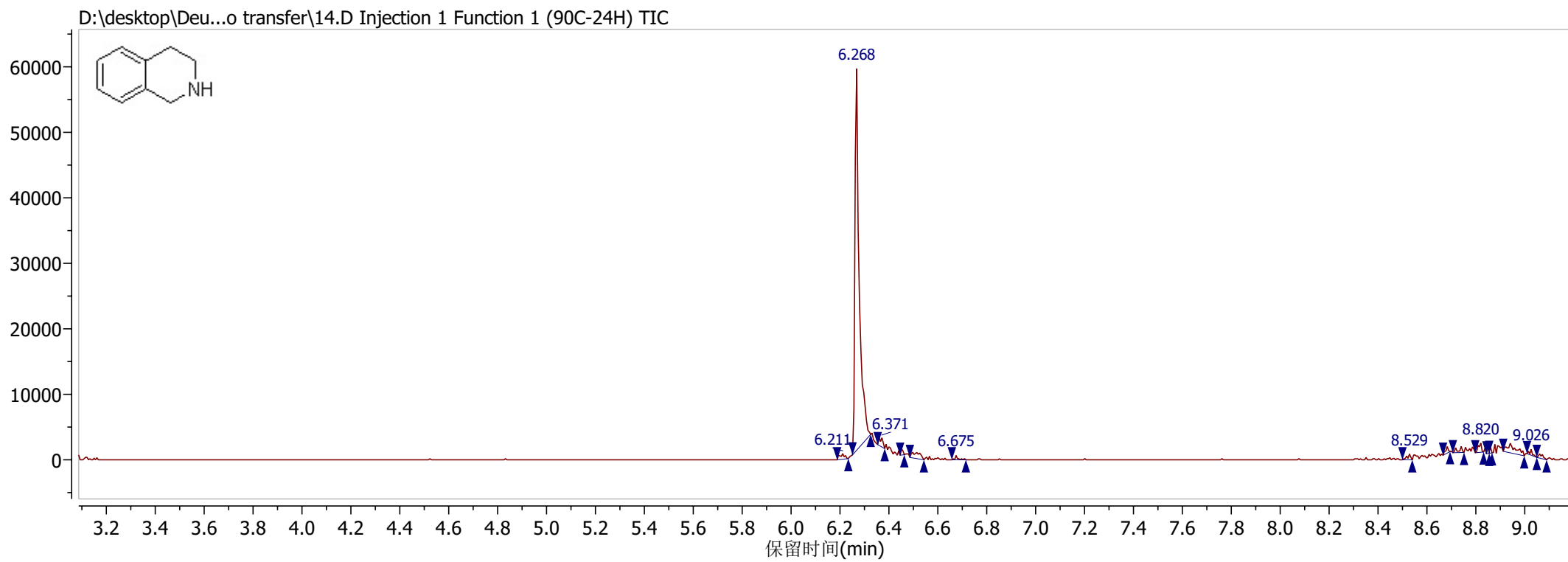


D:\desktop\Deu...o transfer\12.D Injection 1 Function 1 (50C-4H) TIC

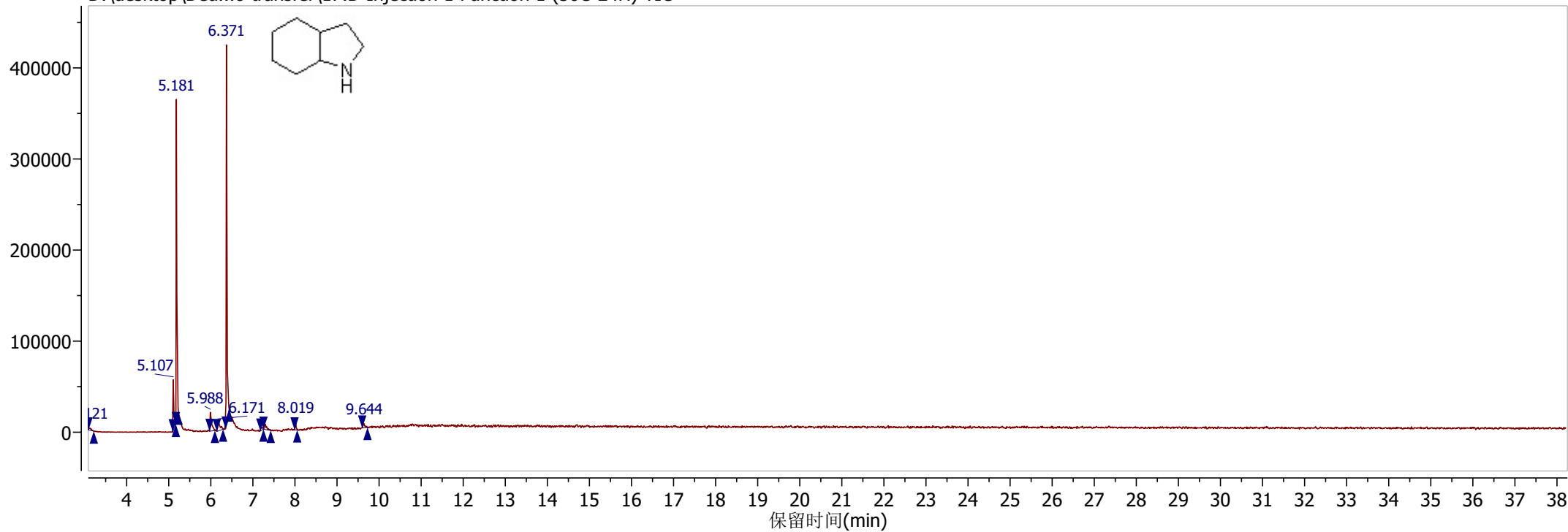


D:\desktop\Deu...o transfer\12.D Injection 1 Function 1 (50C-4H) MS + spectrum 5.71

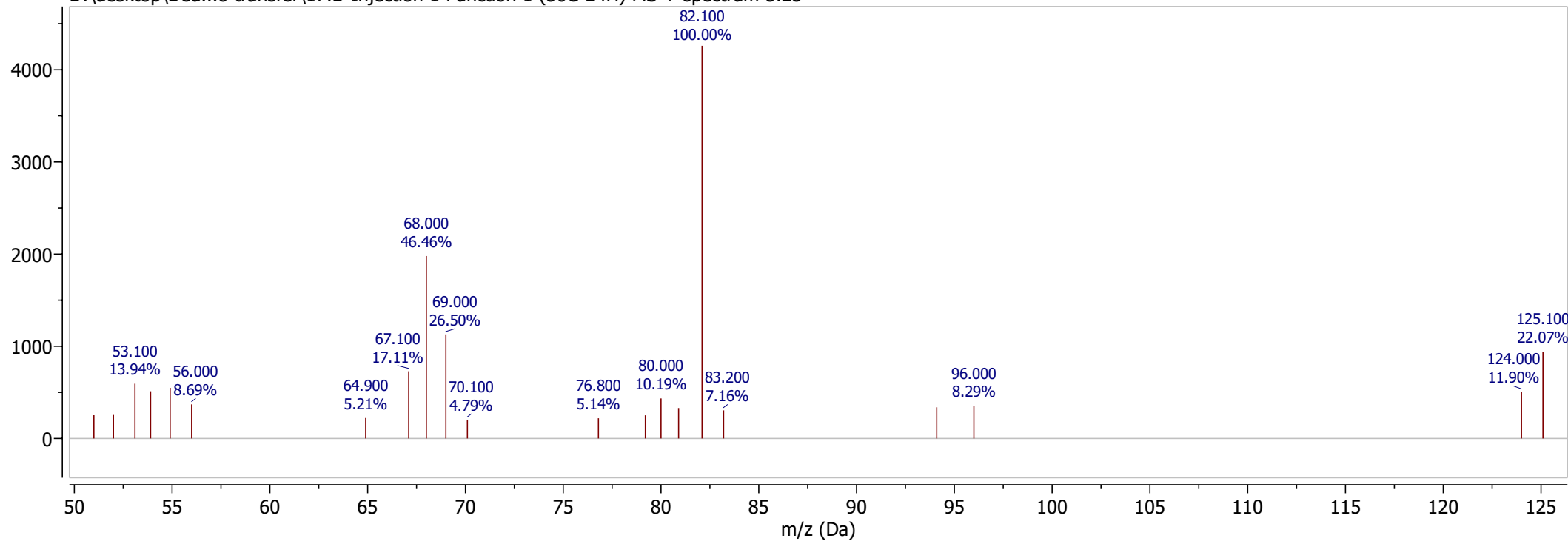


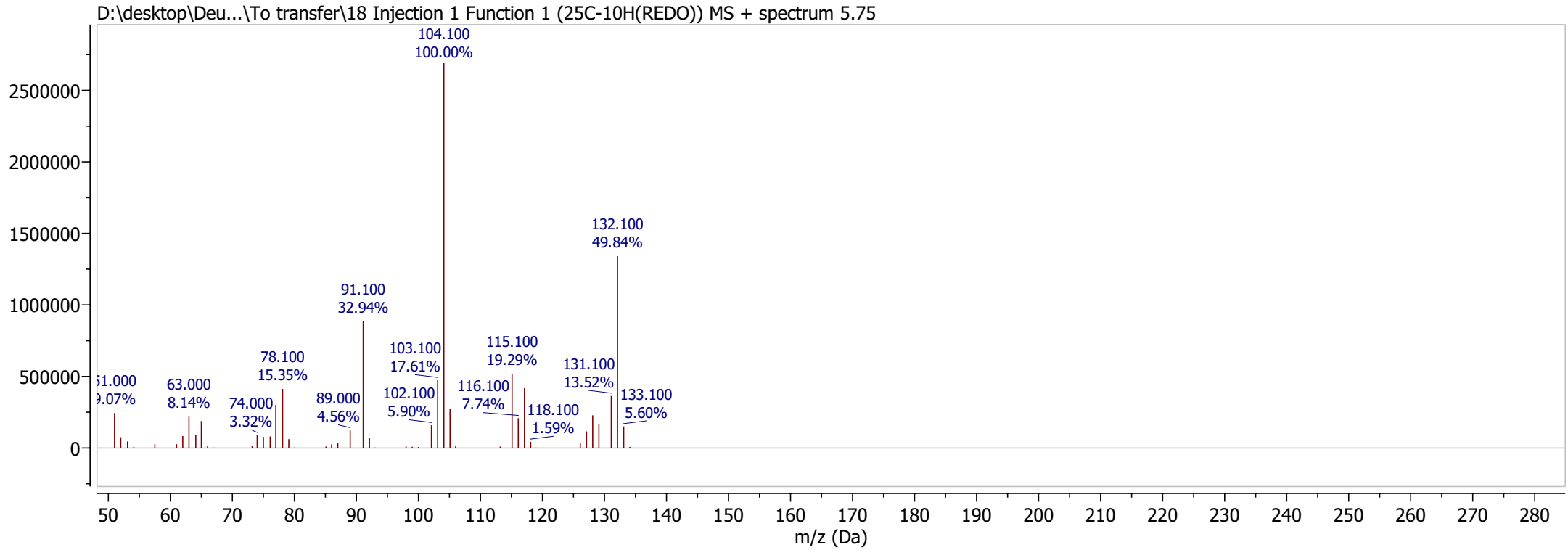
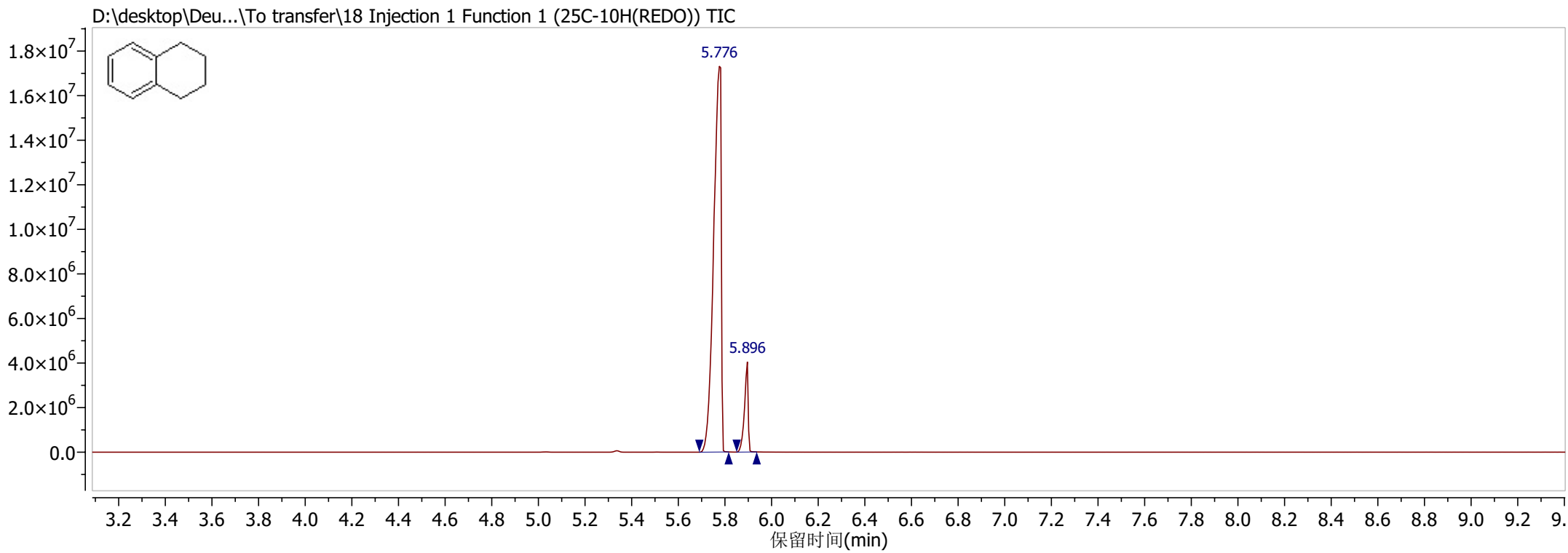


D:\desktop\Deu...o transfer\17.D Injection 1 Function 1 (50C-24H) TIC

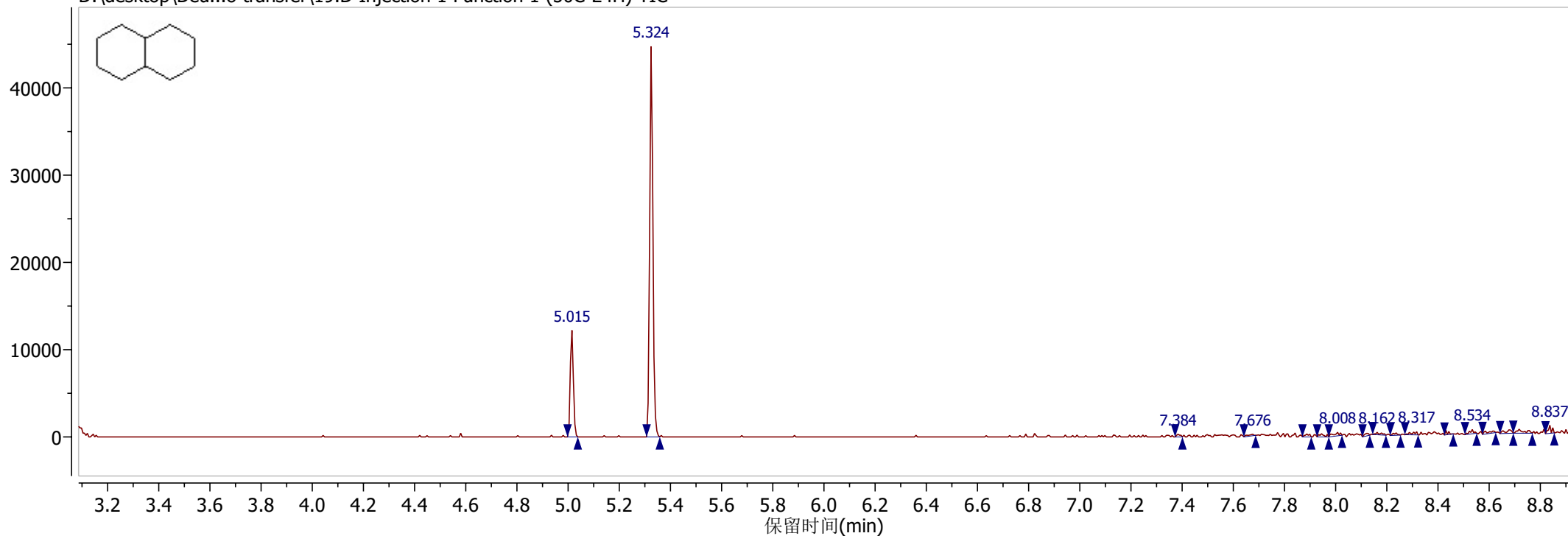


D:\desktop\Deu...o transfer\17.D Injection 1 Function 1 (50C-24H) MS + spectrum 5.25

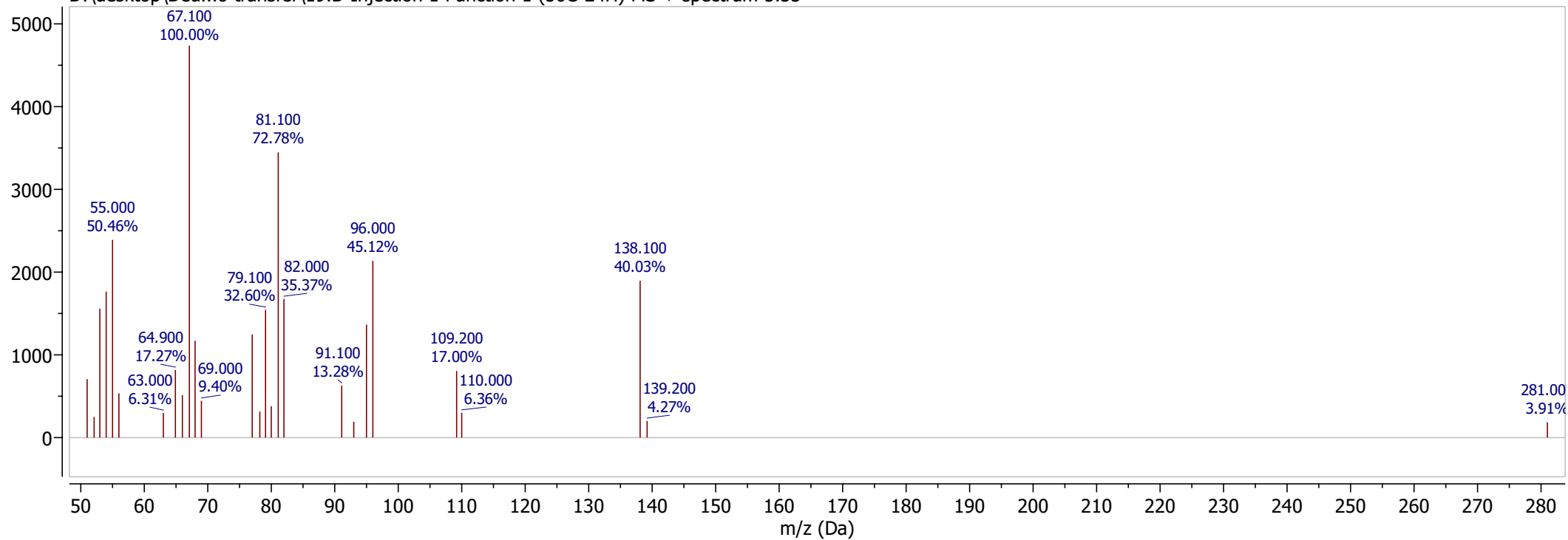




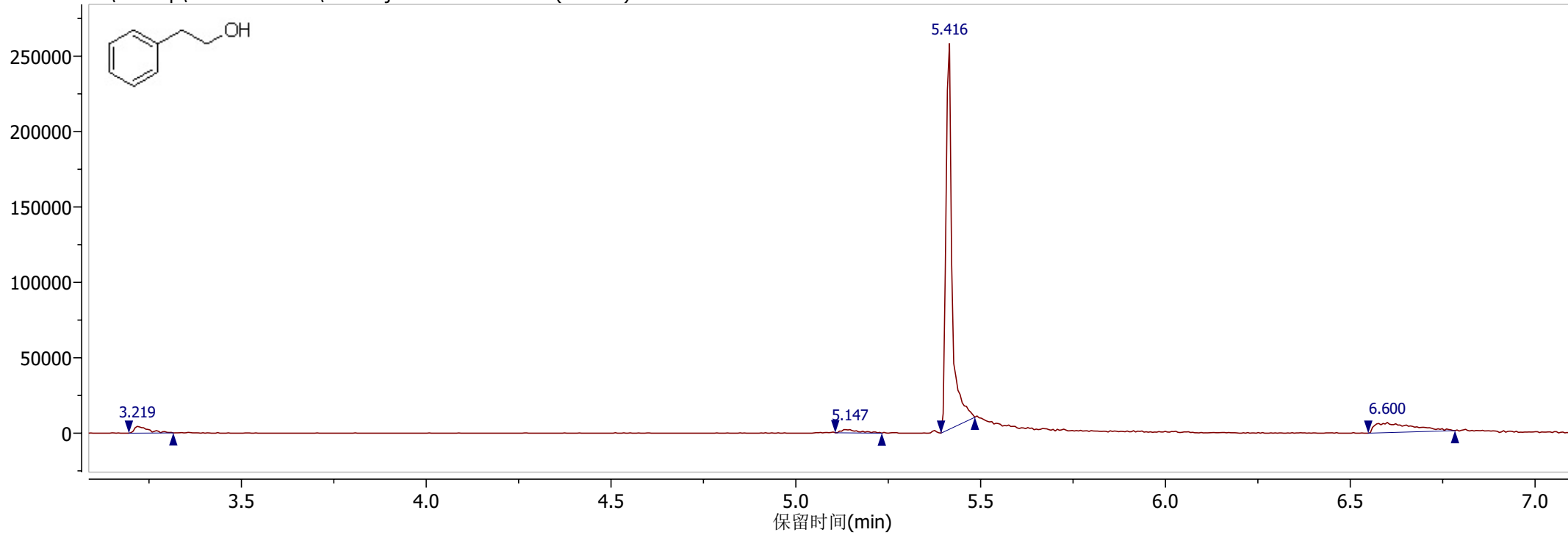
D:\desktop\Deu...o transfer\19.D Injection 1 Function 1 (50C-24H) TIC



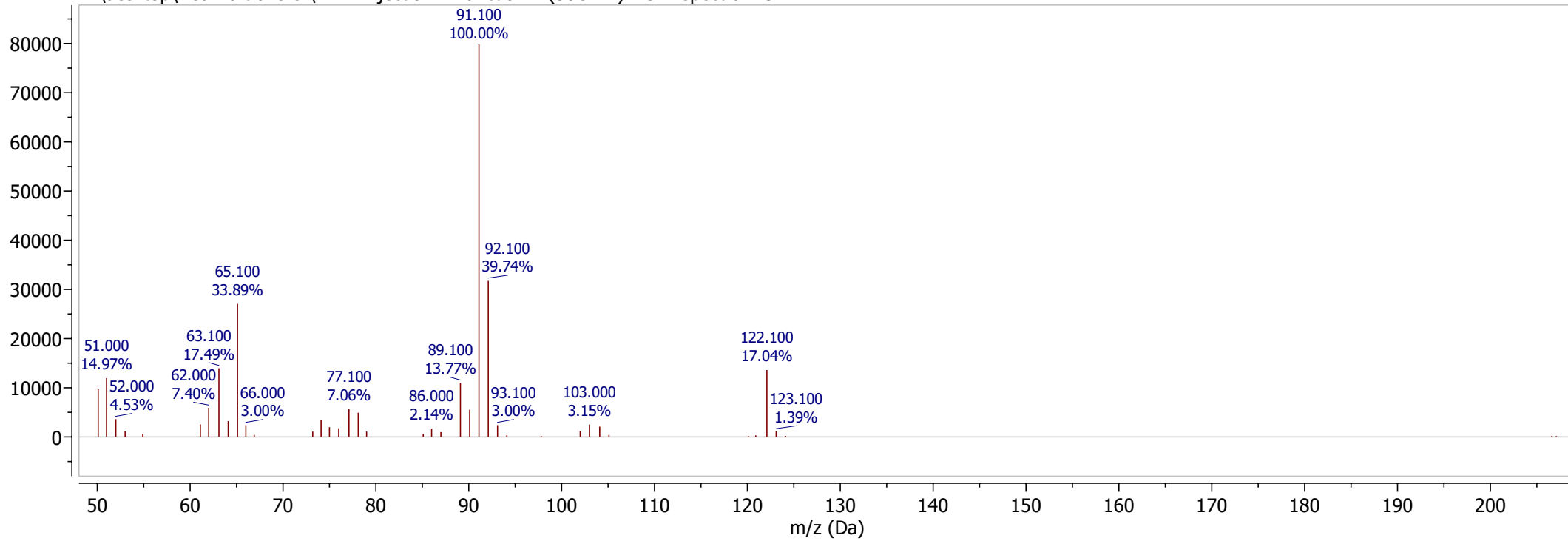
D:\desktop\Deu...o transfer\19.D Injection 1 Function 1 (50C-24H) MS + spectrum 5.33

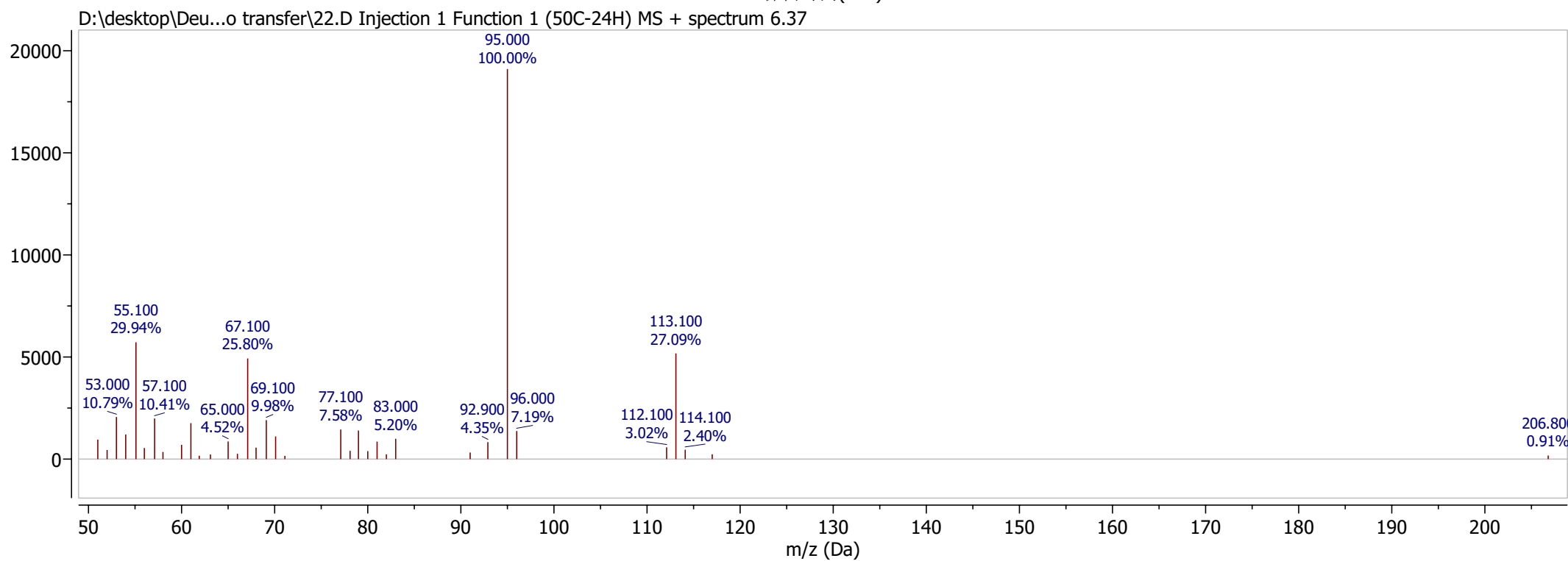
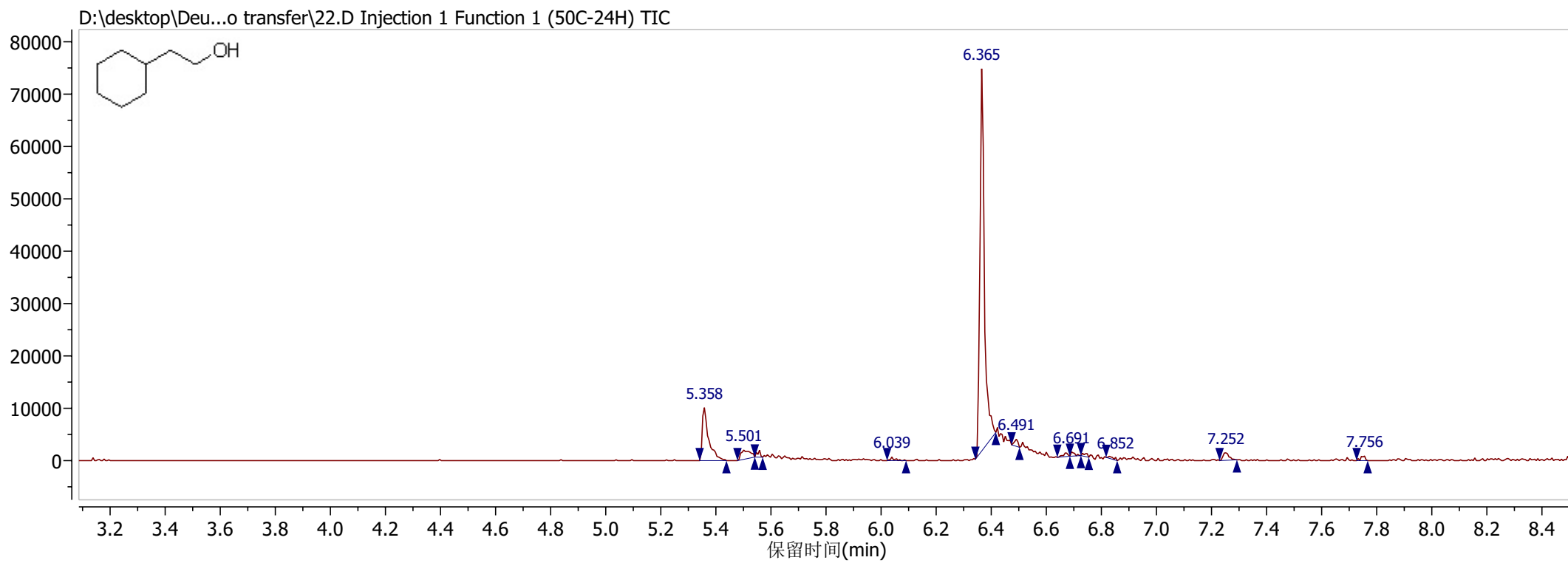


D:\desktop\Deu...o transfer\21.D Injection 1 Function 1 (50C-2H) TIC

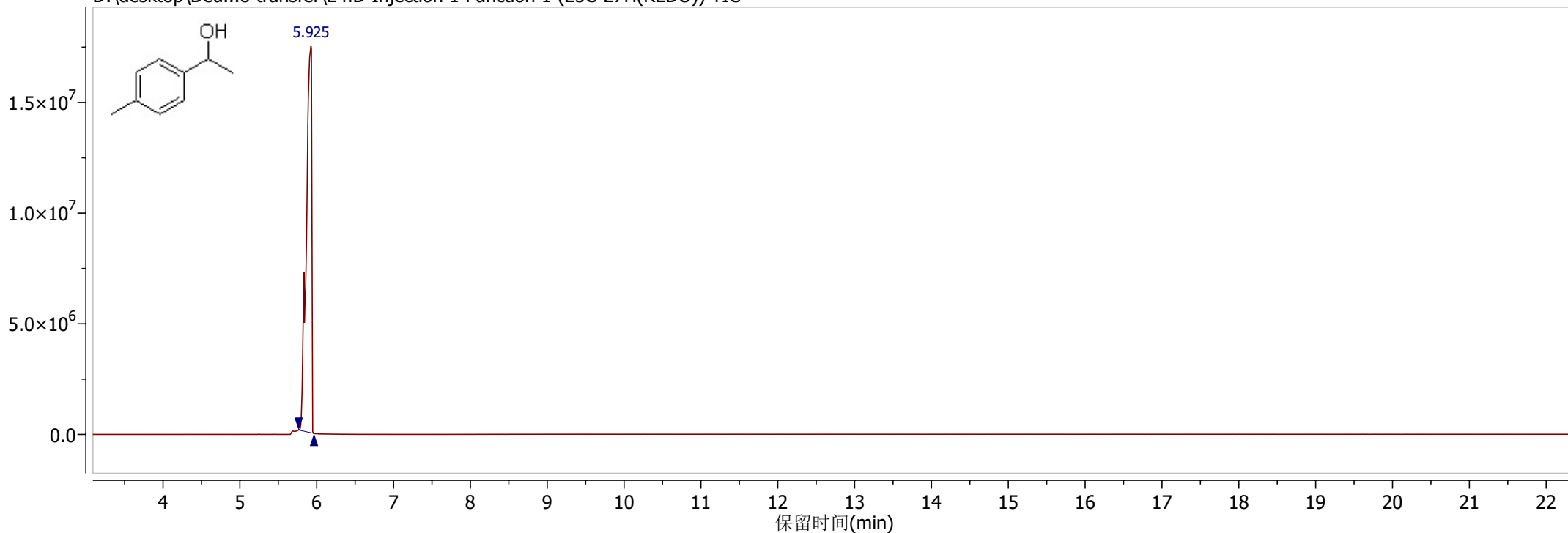


D:\desktop\Deu...o transfer\21.D Injection 1 Function 1 (50C-2H) MS + spectrum 5.42

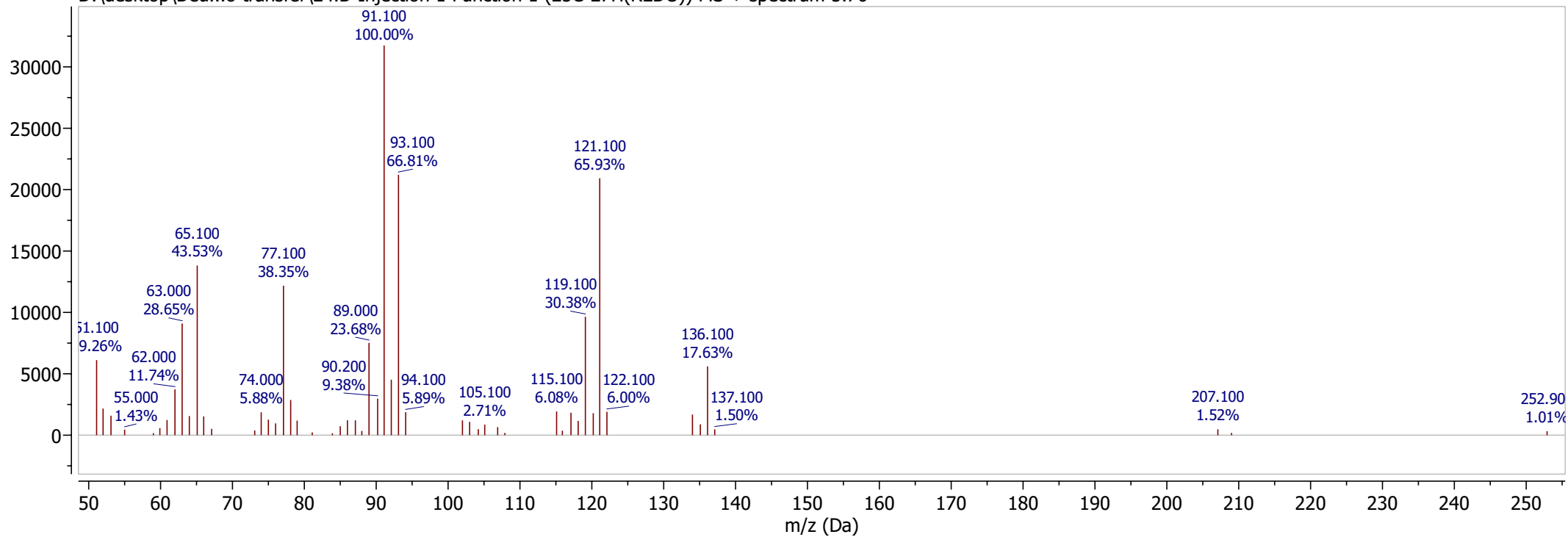


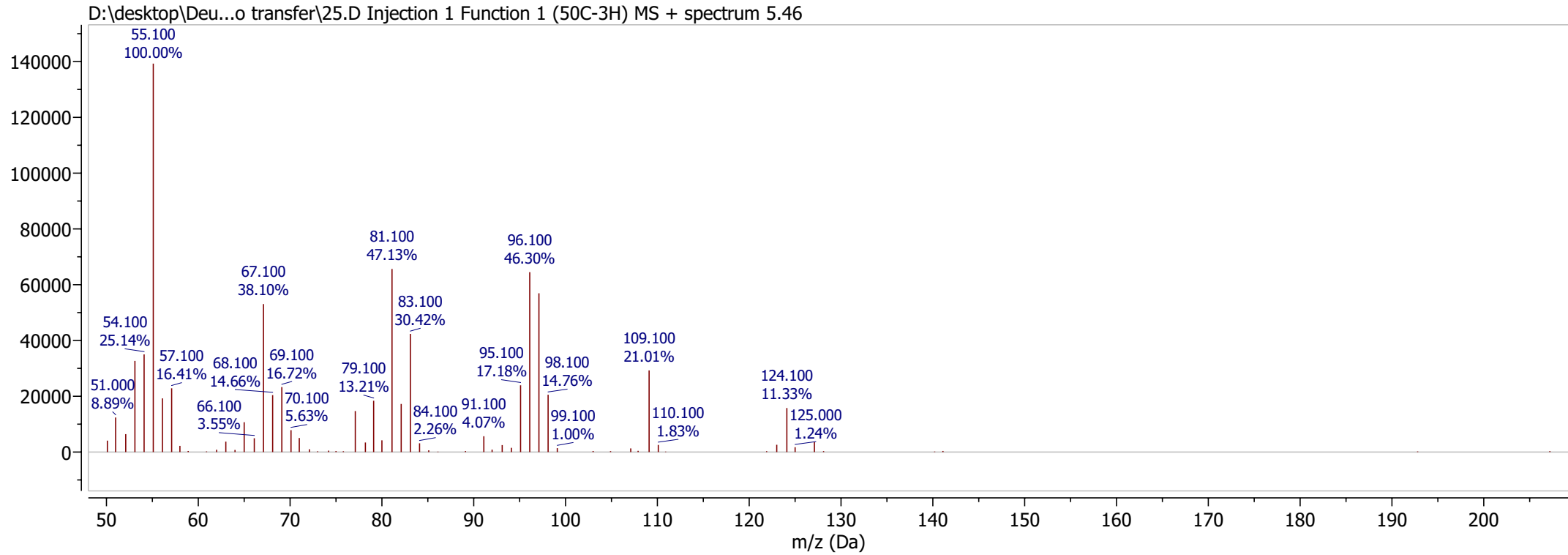
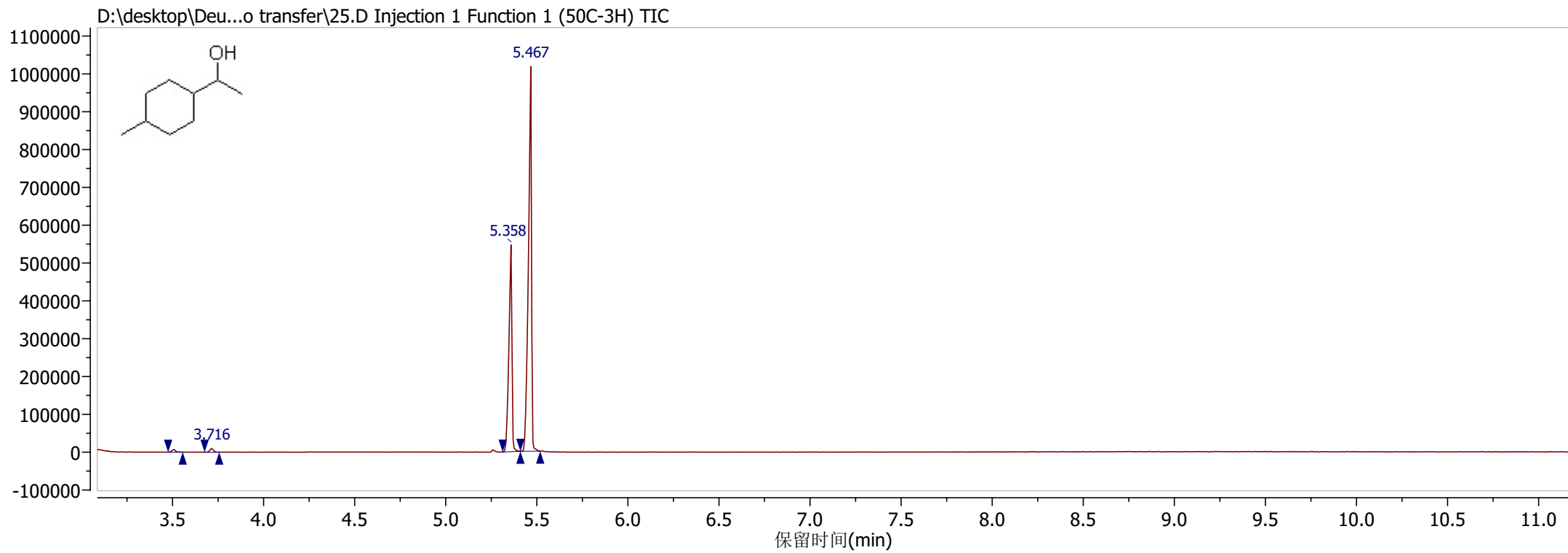


D:\desktop\Deu...o transfer\24.D Injection 1 Function 1 (25C-27H(REDO)) TIC

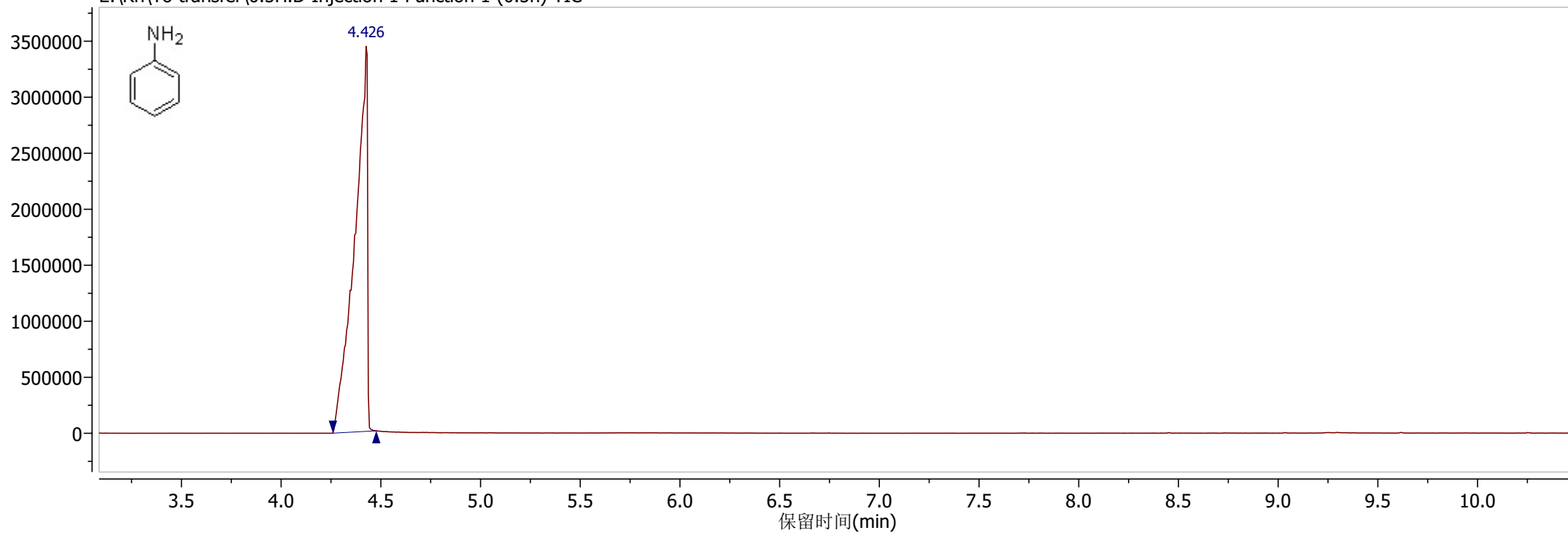


D:\desktop\Deu...o transfer\24.D Injection 1 Function 1 (25C-27H(REDO)) MS + spectrum 5.76

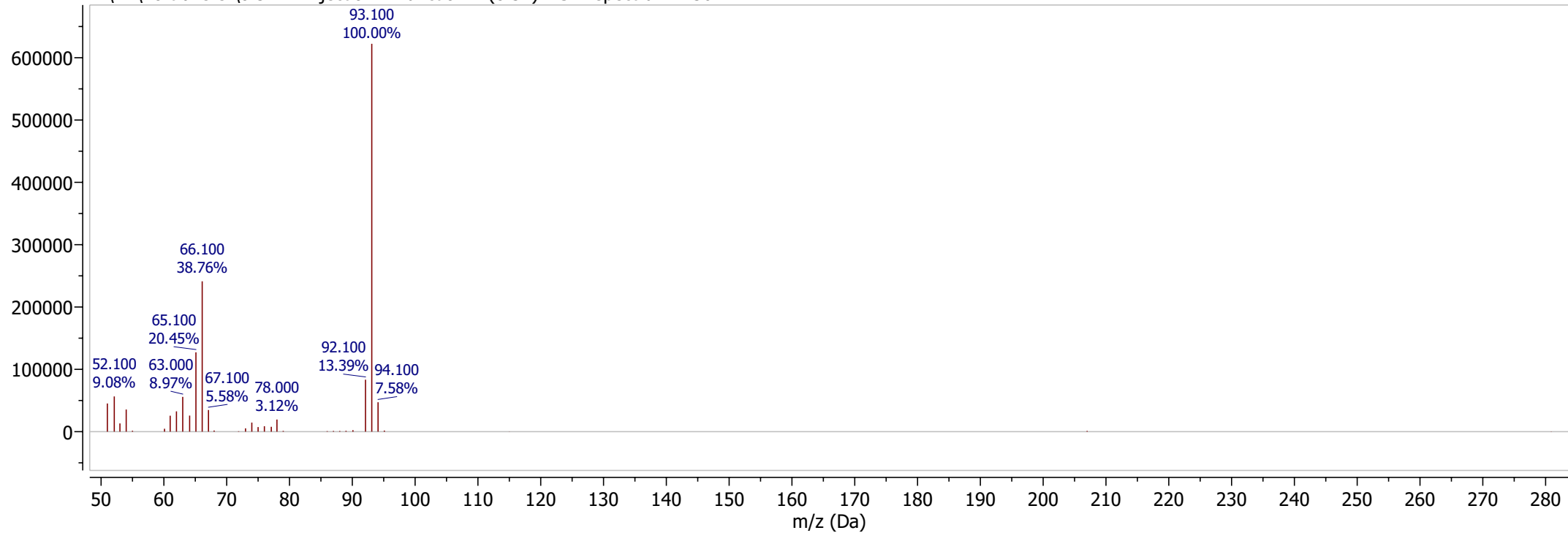


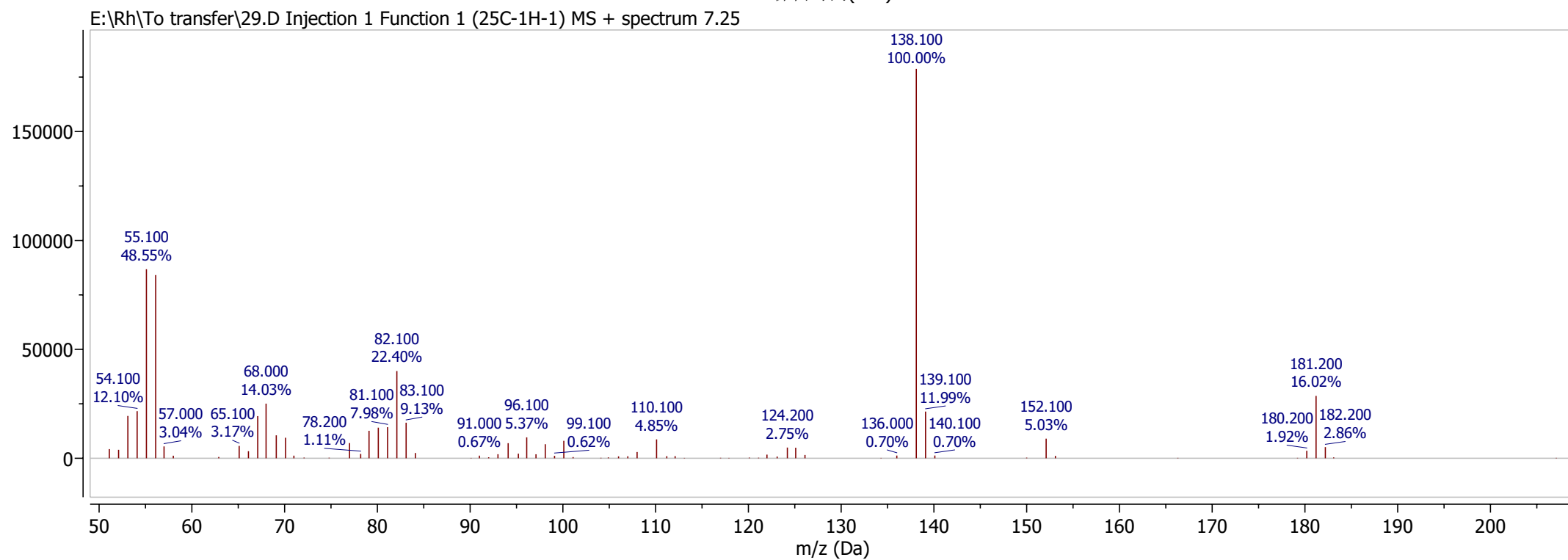
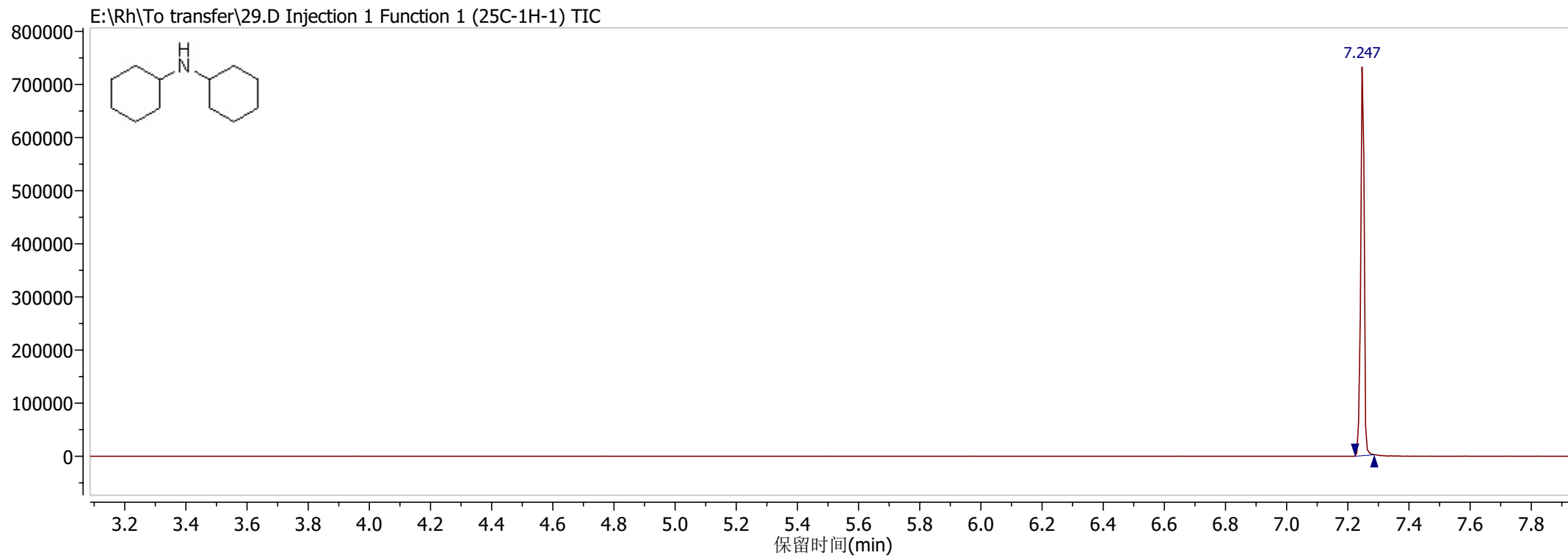


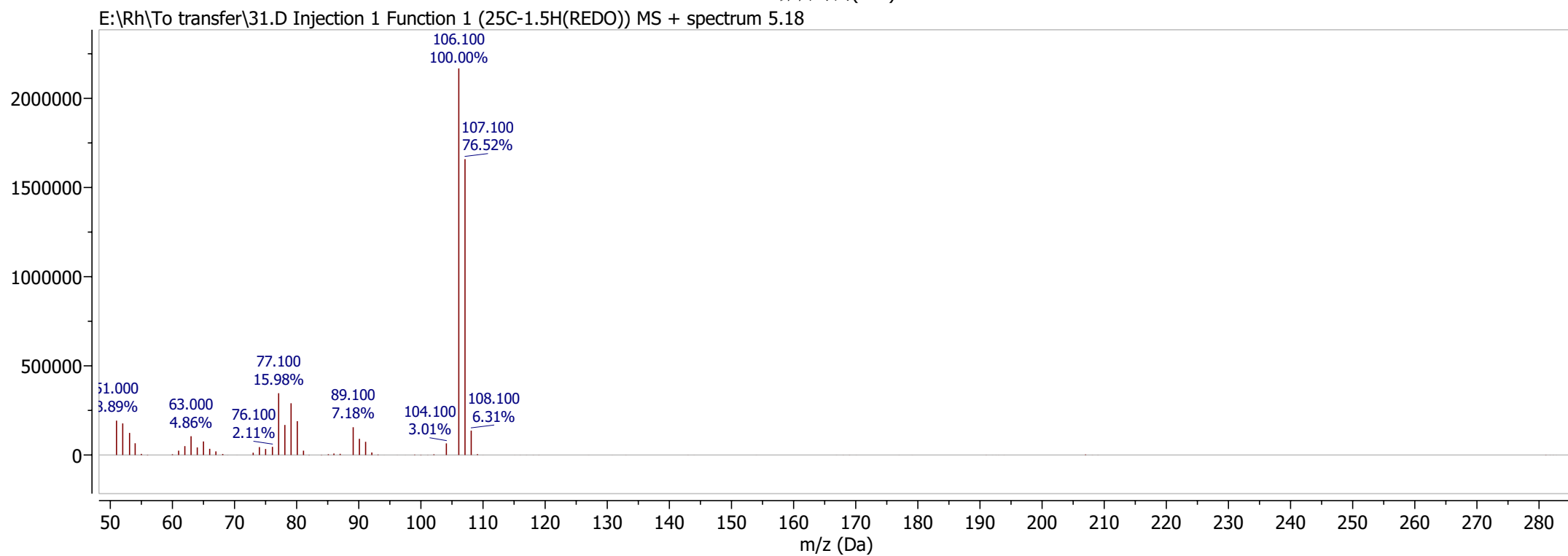
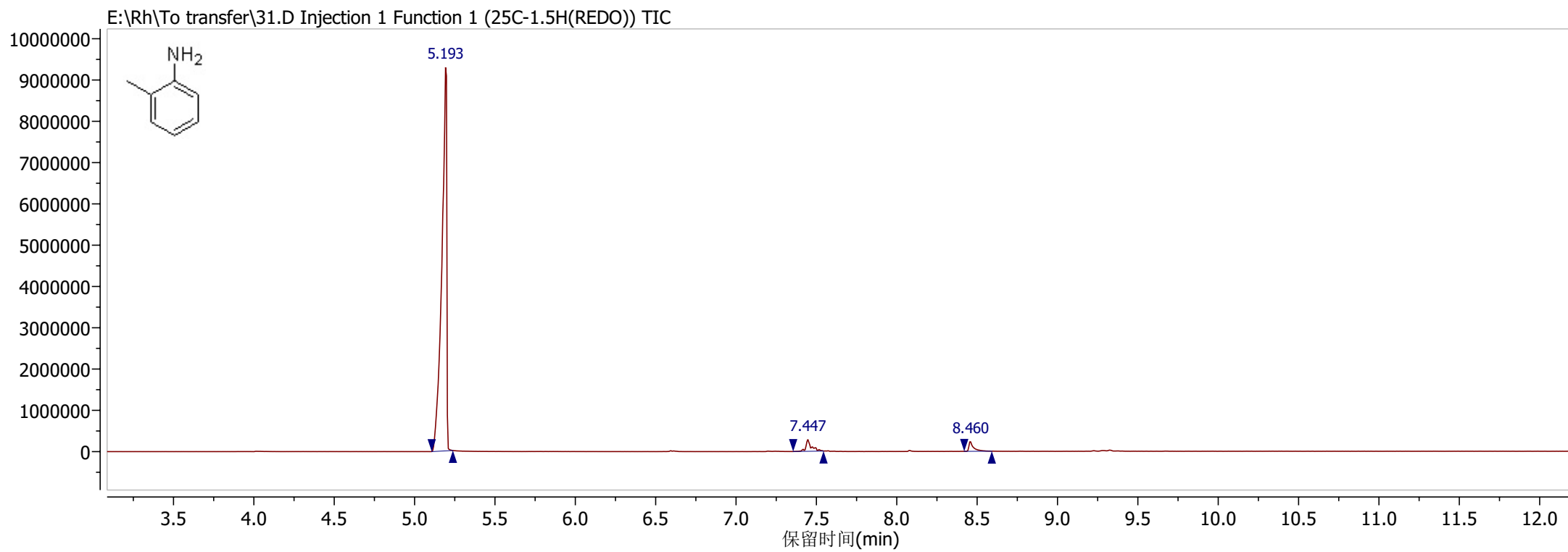
E:\Rh\To transfer\0.5H.D Injection 1 Function 1 (0.5h) TIC



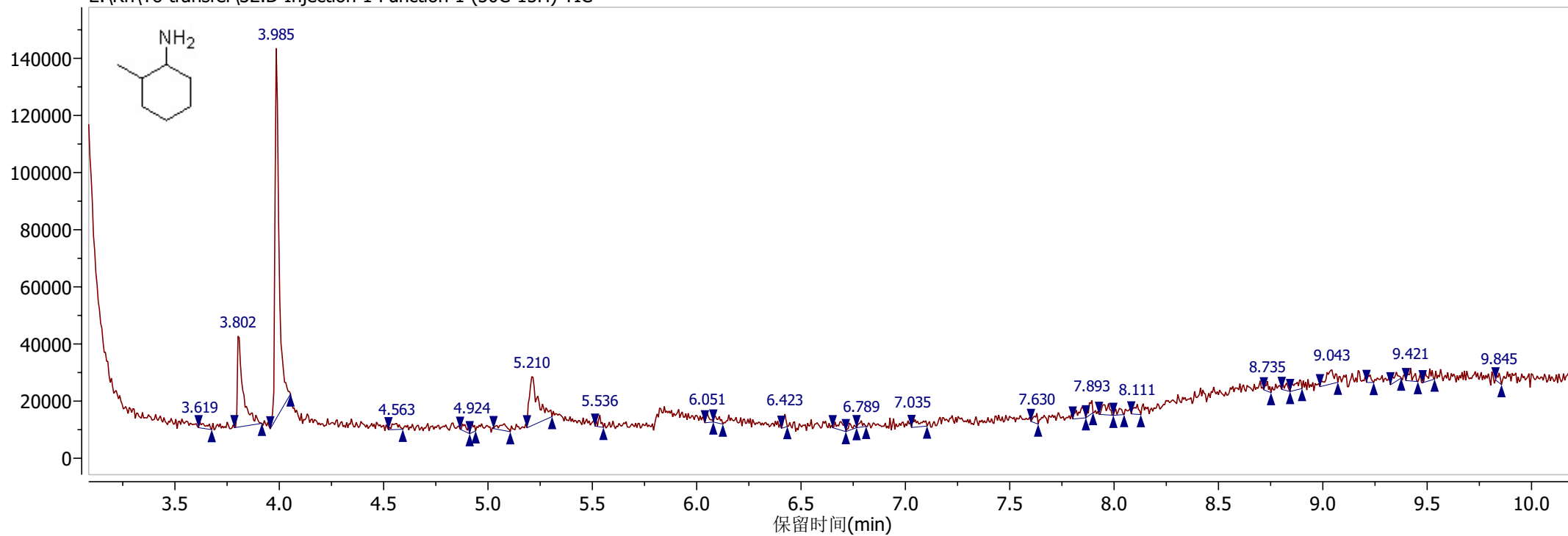
E:\Rh\To transfer\0.5H.D Injection 1 Function 1 (0.5h) MS + spectrum 4.36



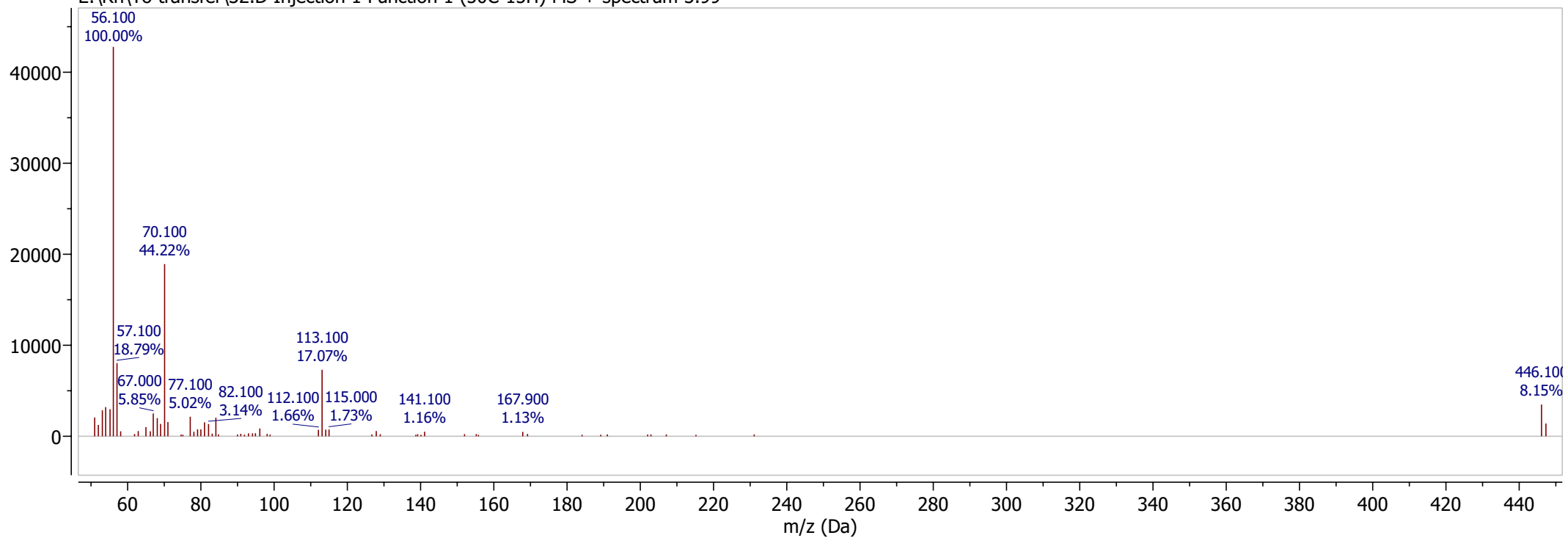




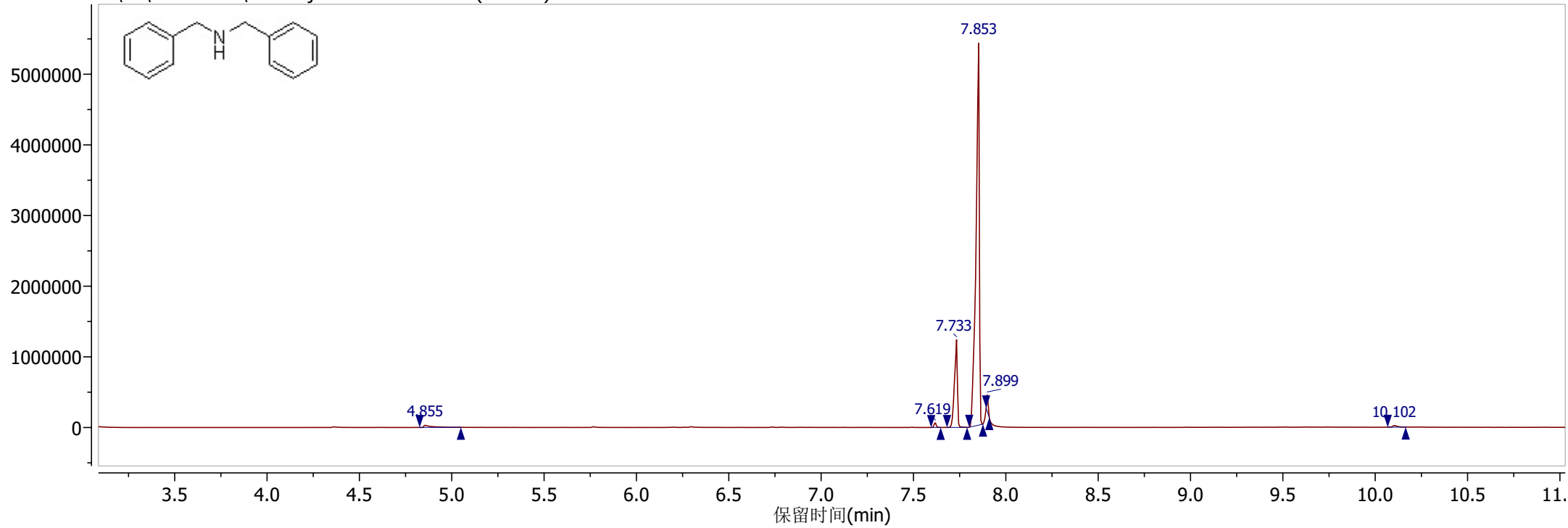
E:\Rh\To transfer\32.D Injection 1 Function 1 (50C-15H) TIC



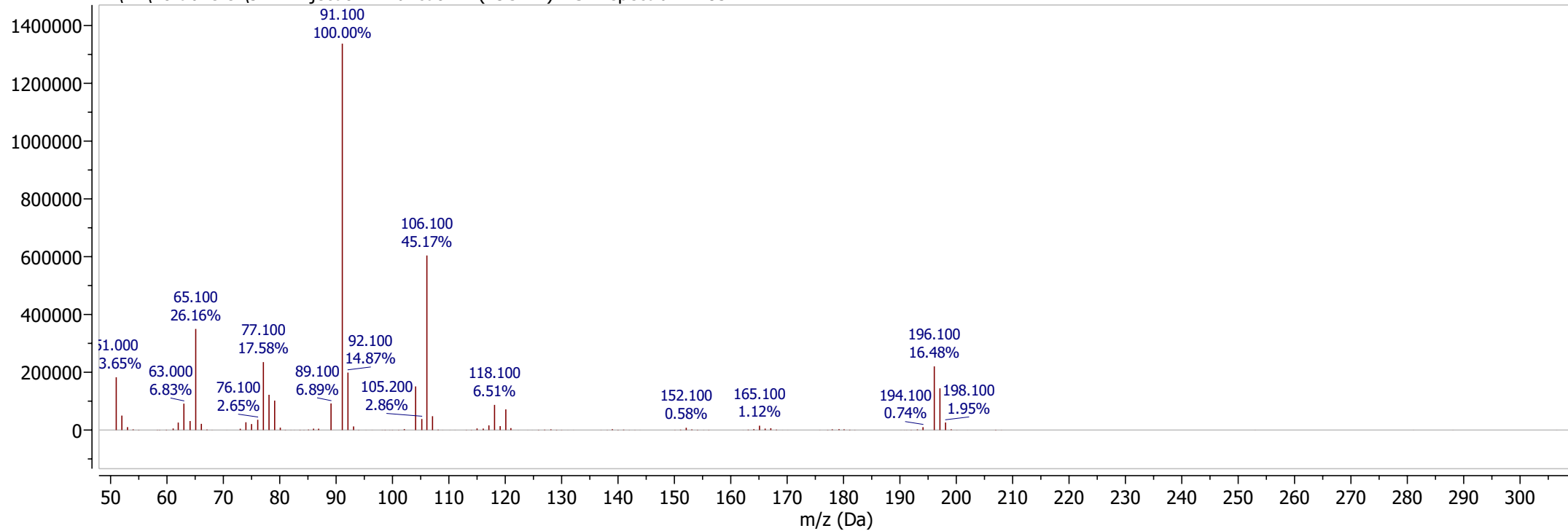
E:\Rh\To transfer\32.D Injection 1 Function 1 (50C-15H) MS + spectrum 3.99



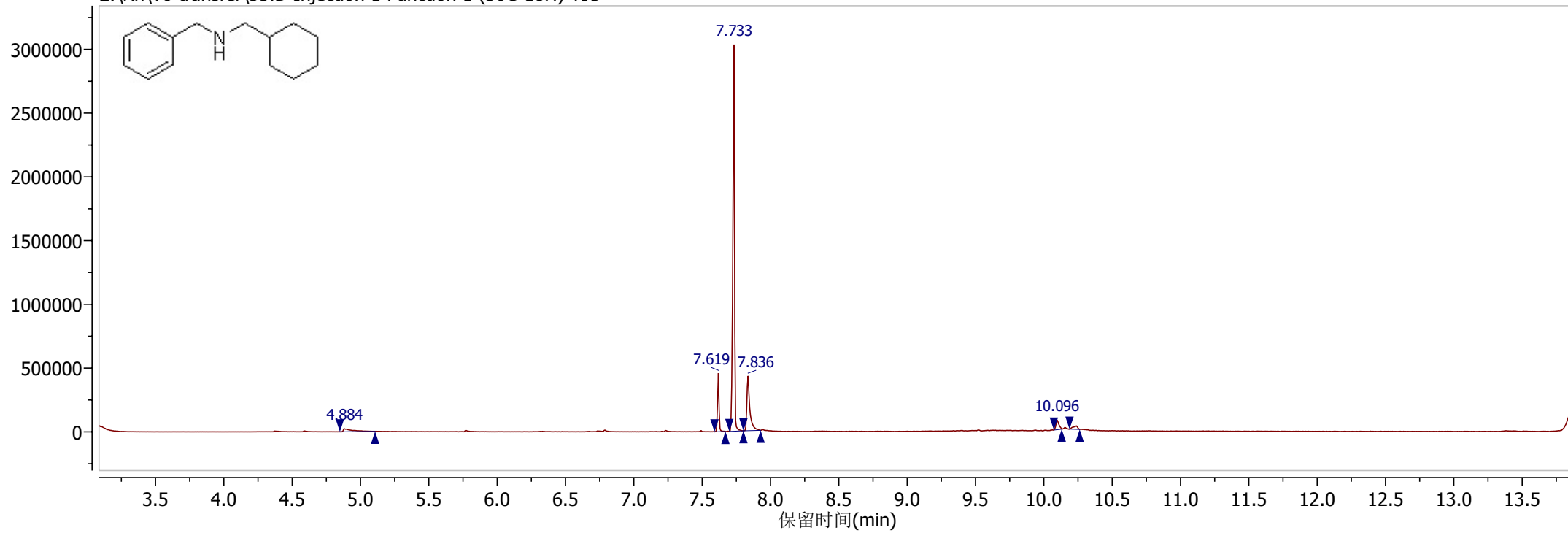
E:\Rh\To transfer\34.D Injection 1 Function 1 (25C-1H) TIC



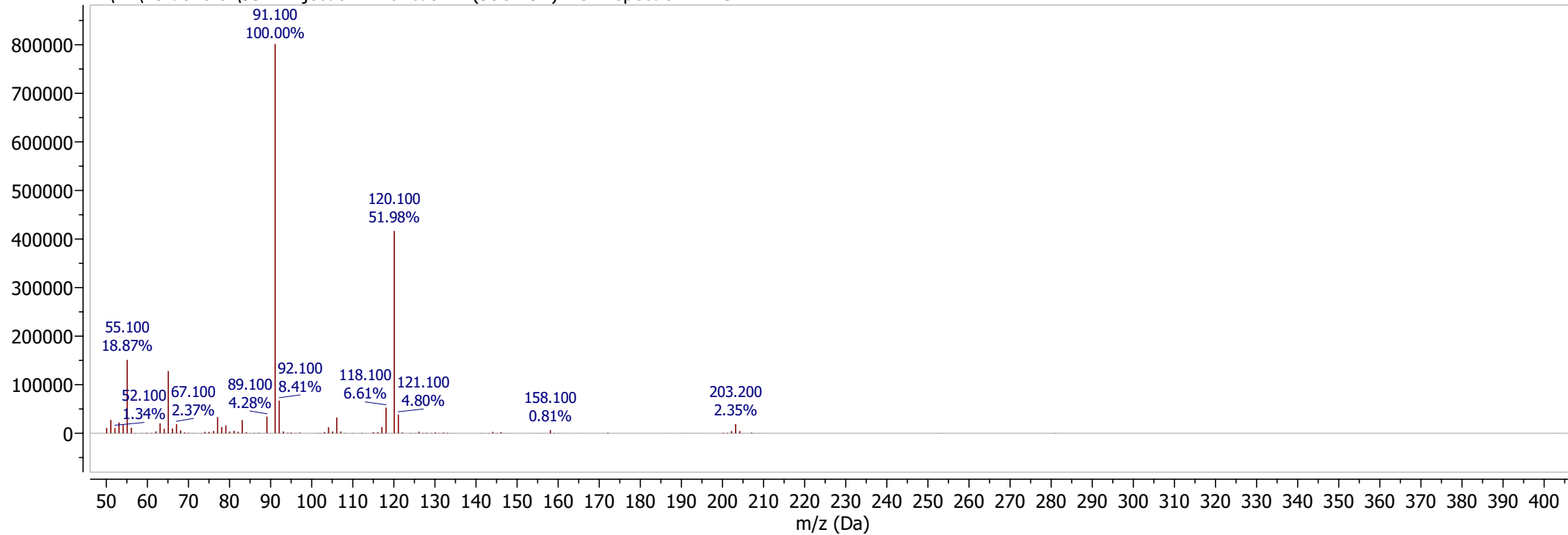
E:\Rh\To transfer\34.D Injection 1 Function 1 (25C-1H) MS + spectrum 7.85



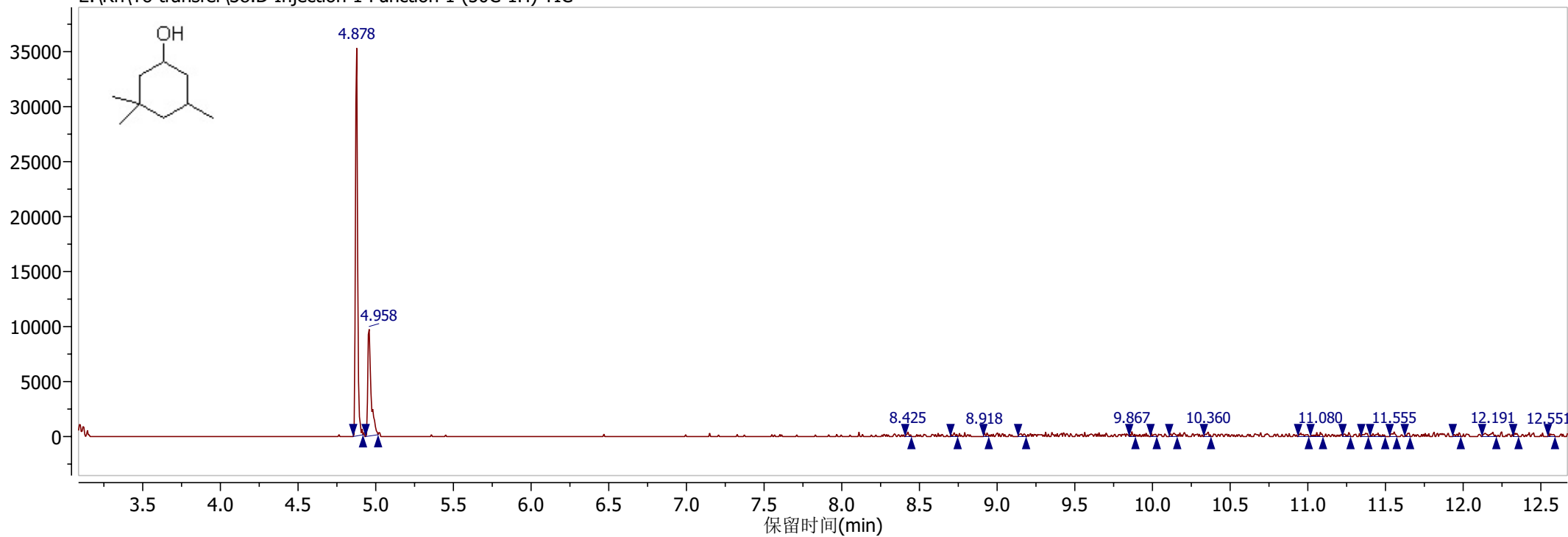
E:\Rh\To transfer\35.D Injection 1 Function 1 (50C-18H) TIC



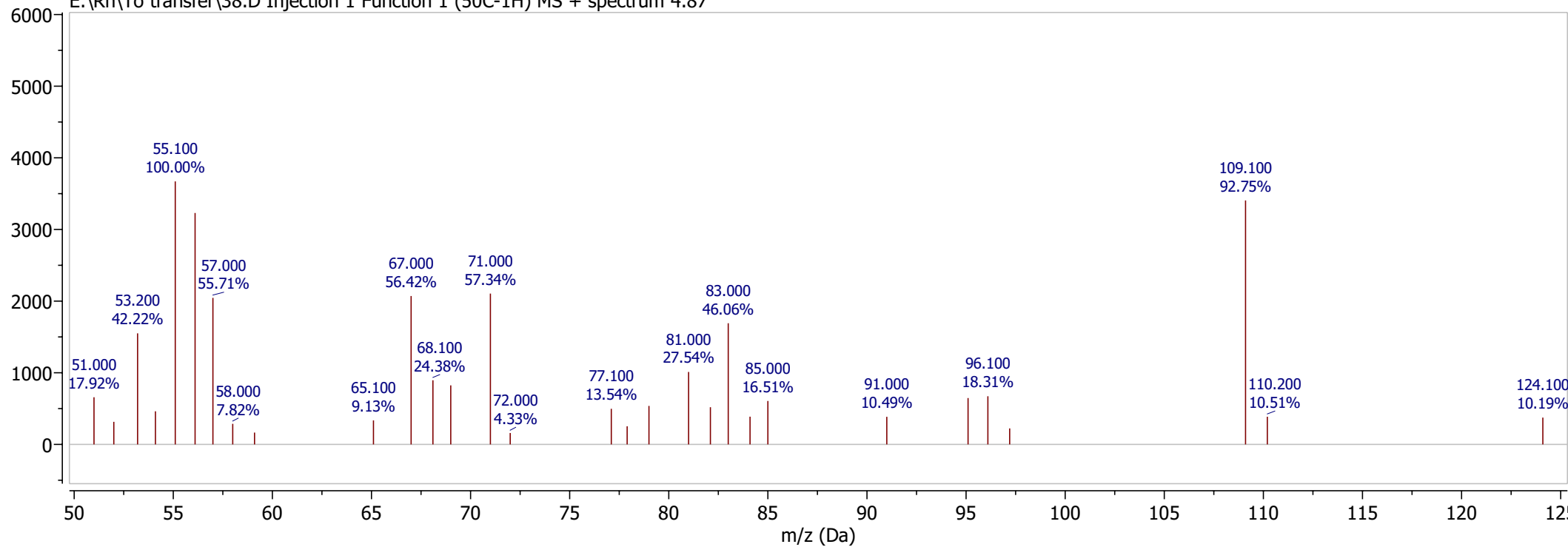
E:\Rh\To transfer\35.D Injection 1 Function 1 (50C-18H) MS + spectrum 7.73



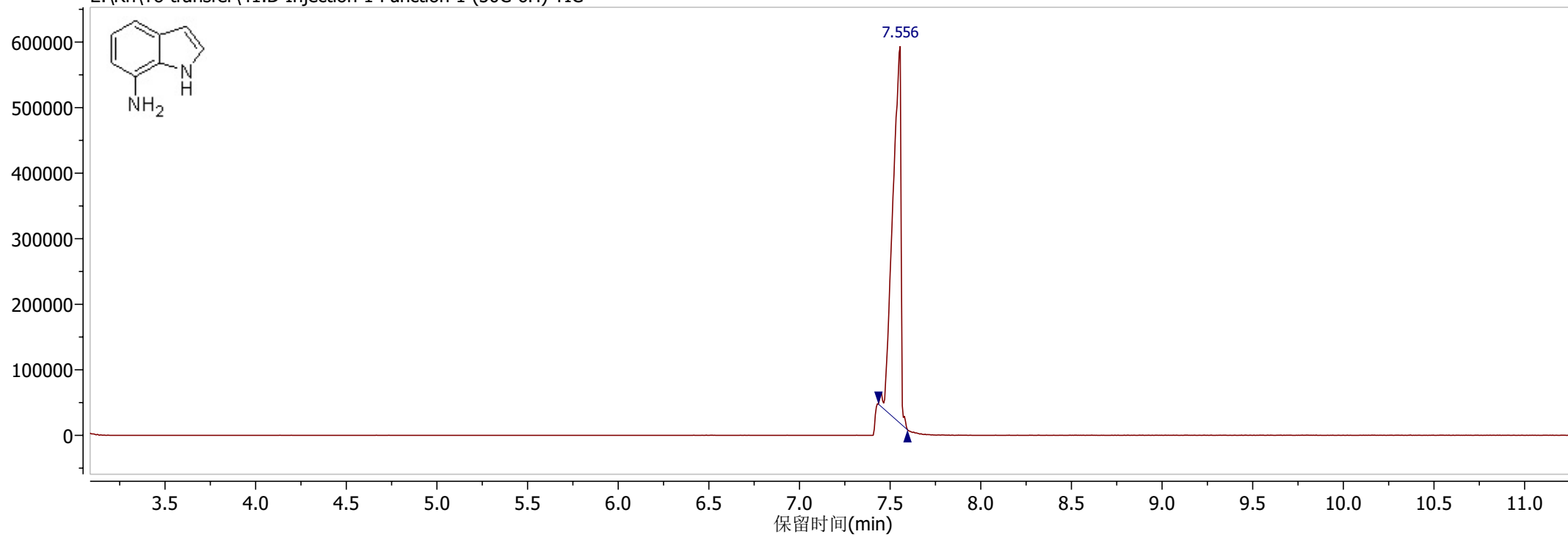
E:\Rh\To transfer\38.D Injection 1 Function 1 (50C-1H) TIC



E:\Rh\To transfer\38.D Injection 1 Function 1 (50C-1H) MS + spectrum 4.87



E:\Rh\To transfer\41.D Injection 1 Function 1 (50C-6H) TIC



E:\Rh\To transfer\41.D Injection 1 Function 1 (50C-6H) MS + spectrum 7.53

