

Figure S1: Overall Survival in Patients Stratified by Tumor Type.

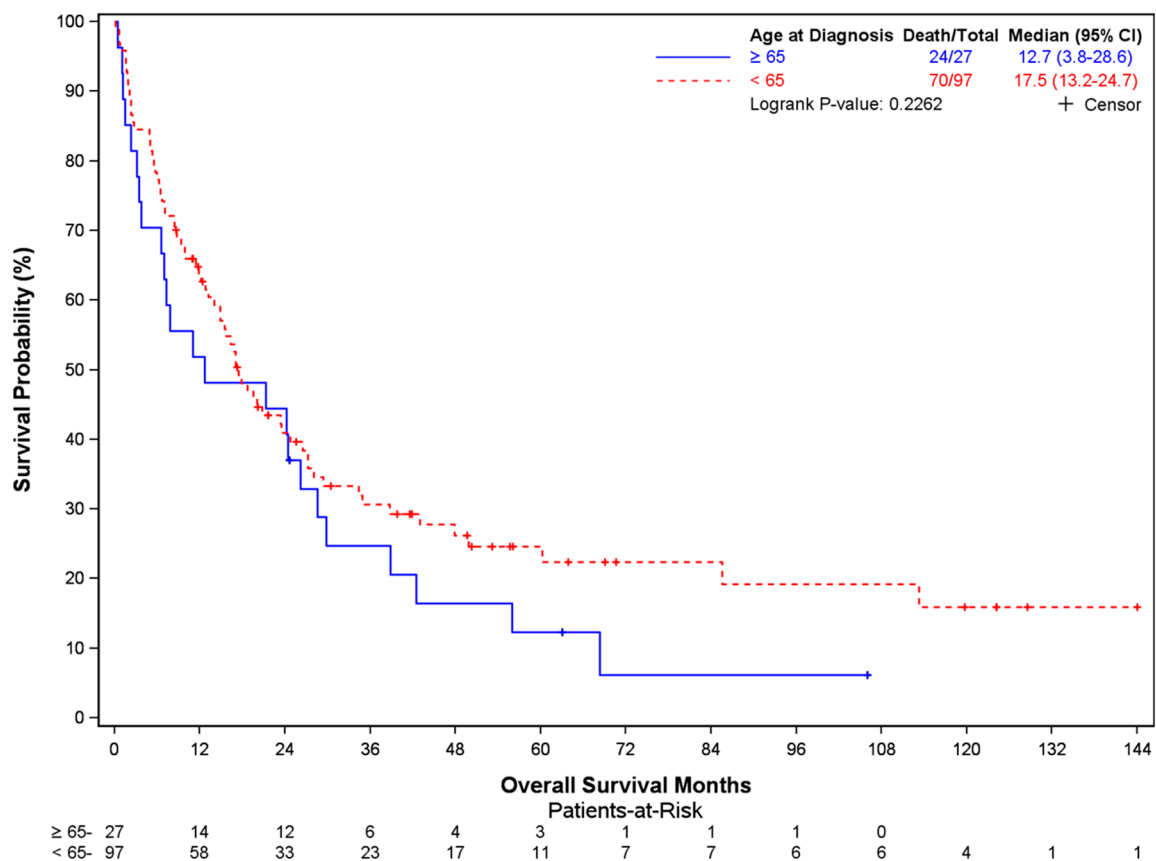


Figure S2: Overall Survival in Patients Stratified by Age at Diagnosis.

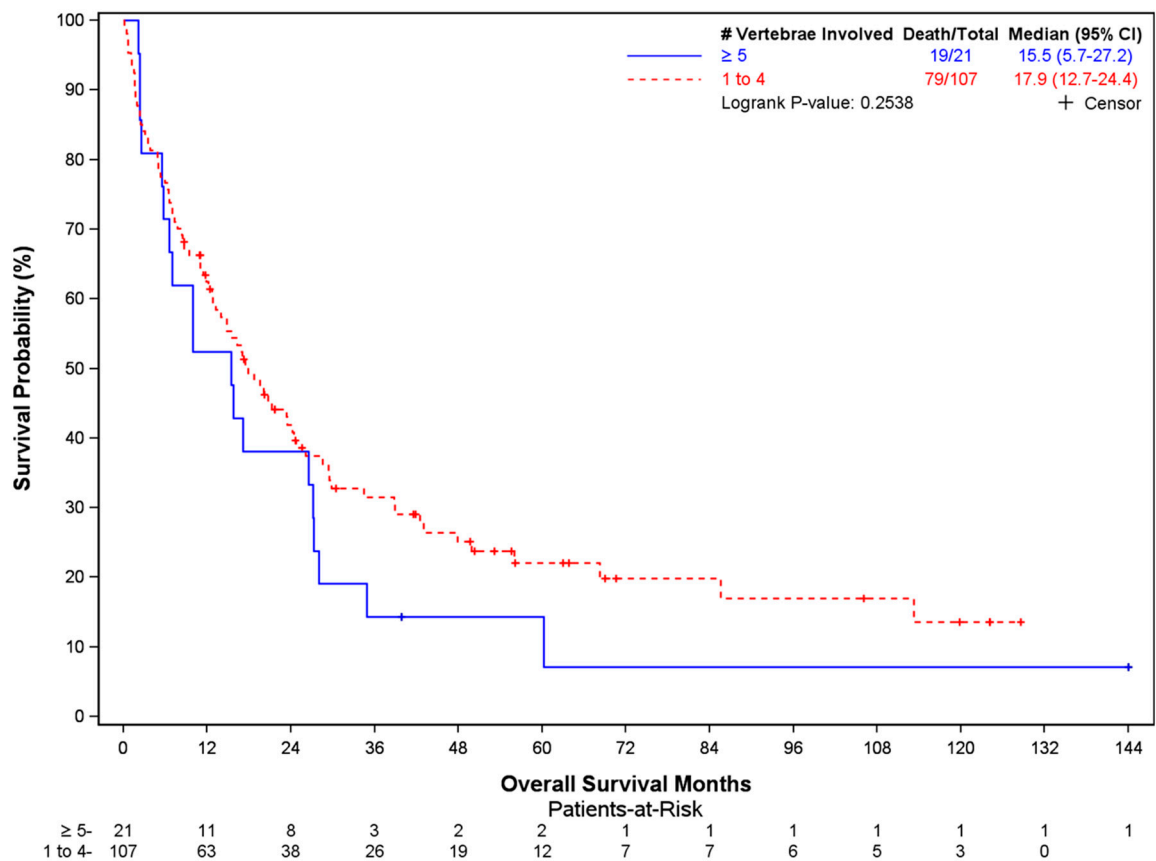


Figure S3: Overall Survival in Patients Stratified by Number of Vertebrae Involved.

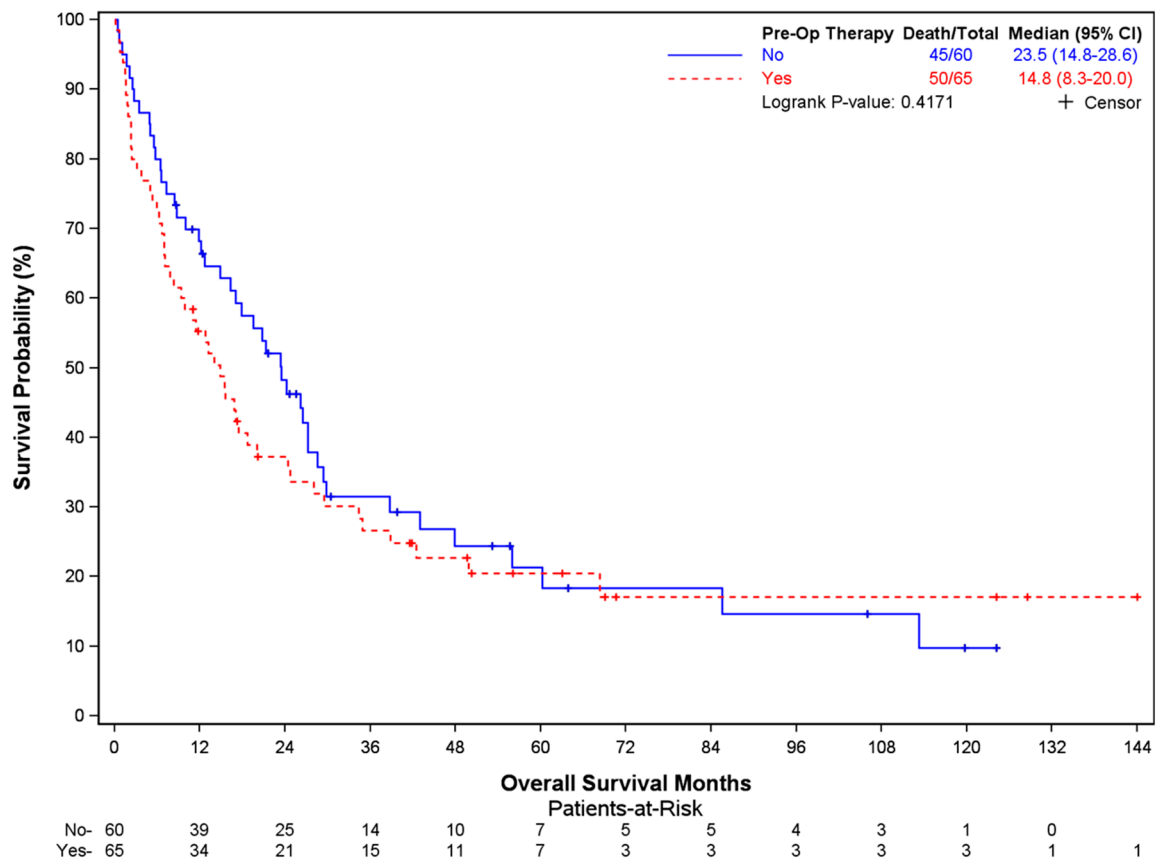


Figure S4: Overall Survival in Patients Stratified by Receipt of Pre-Operative Therapy.