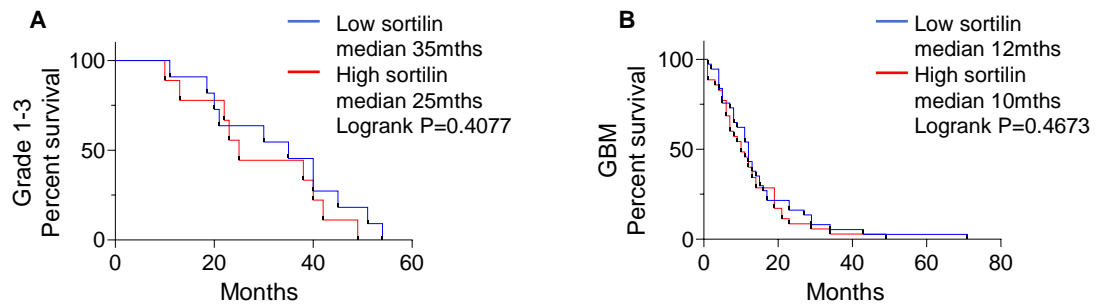
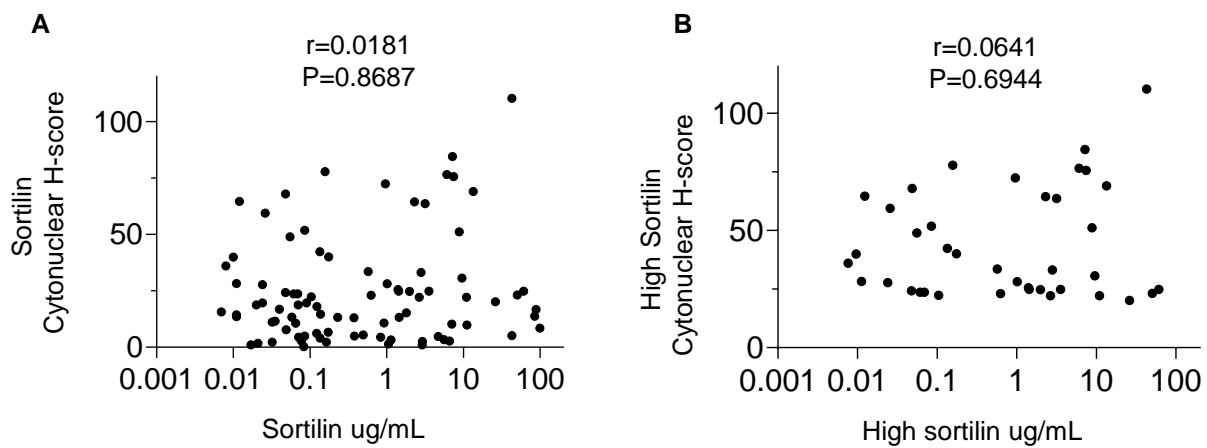


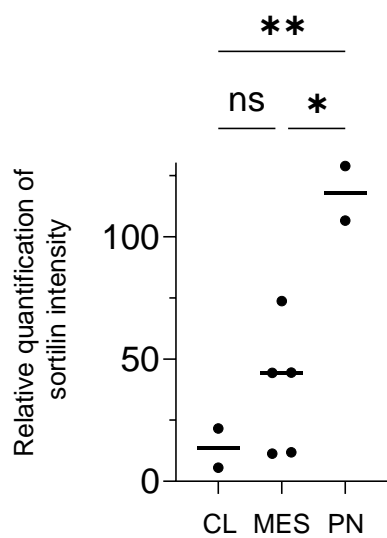
**Figure S1.** (A) Grade 1-3 patient survival based on low staining ( $\leq$ median h-score) and high staining ( $>$ median h-score). Cases with low sortilin h-score had longer median survival (36.5 months) compared to high sortilin h-score (23.5 months). (B) GBM patient survival based on low staining ( $\leq$ median h-score) and high staining ( $>$ median h-score). Cases with low sortilin h-score had longer median survival (12.5 months) compared to high sortilin h-score (11 months).



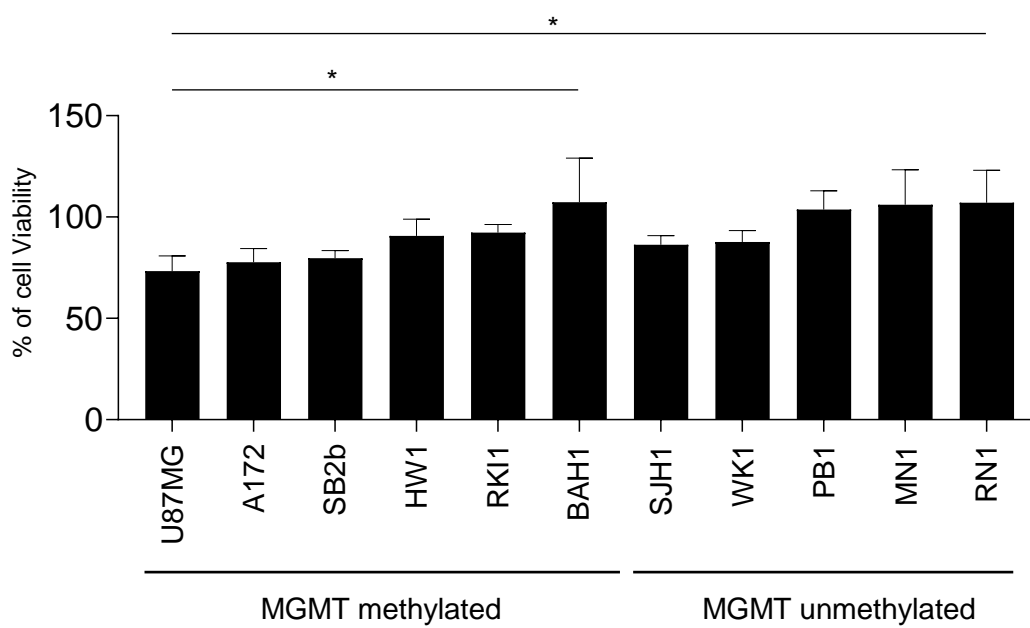
**Figure S2.** (A) Grade 1-3 patient survival based on low ( $\leq$ median) and high ( $>$ median) sortilin concentration in plasma. Cases with low sortilin concentration had longer median survival (35 months) compared to high sortilin concentration (25 months). (B) GBM patient survival based on low ( $\leq$ median) and high ( $>$ median) concentration in plasma. Cases with low sortilin concentration had longer median survival (12 months) compared to high sortilin concentration (10 months).



**Figure S3. A)** Correlation of sortilin in tissue cytonuclear H-score and soluble sortilin in plasma concentration. **B)** Correlation of high sortilin expression in tissue cytonuclear H-score and high soluble sortilin concentration in plasma.



**Figure S4.** Densitometric analysis of sortilin protein intensity by subgroups. CL = classic, MES = Mesenchymal, PN = Proneural. \*  $P < 0.05$ , \*\*  $P < 0.01$ , Student's t-test or ANOVA.



**Figure S5.** Viability assay Cell lines treated with AF38469 MGMT methylated v's MGMT unmethylated.