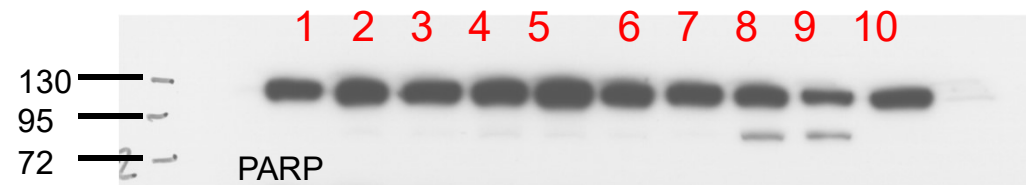


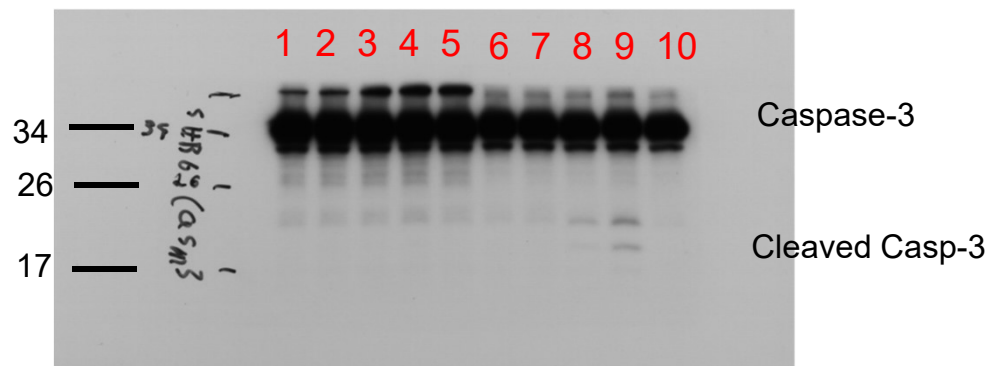
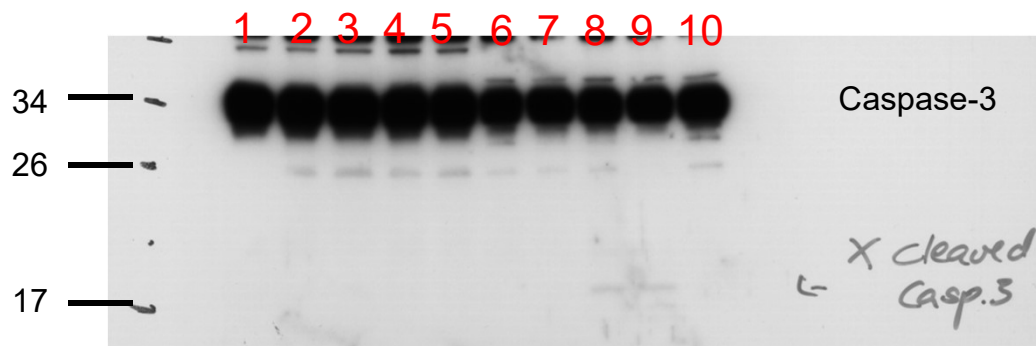
LNCaP

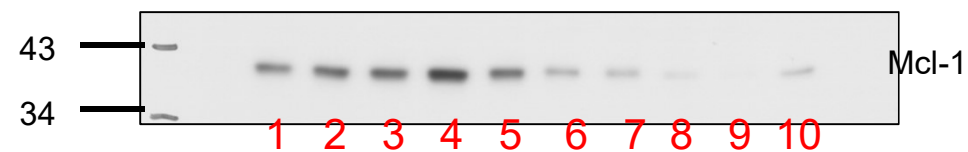
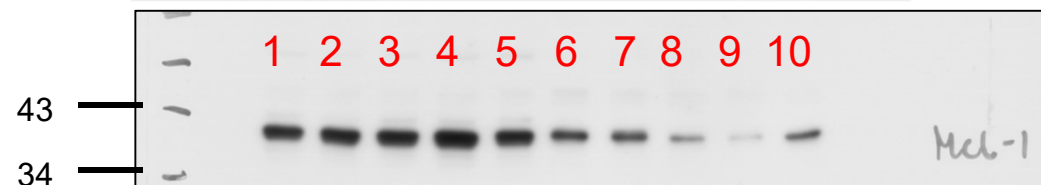
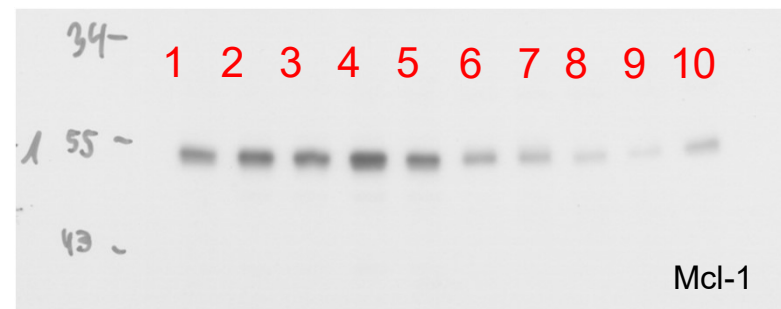
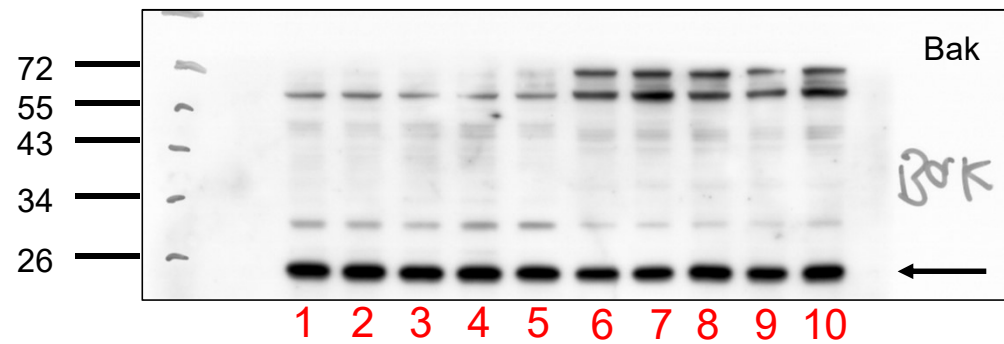
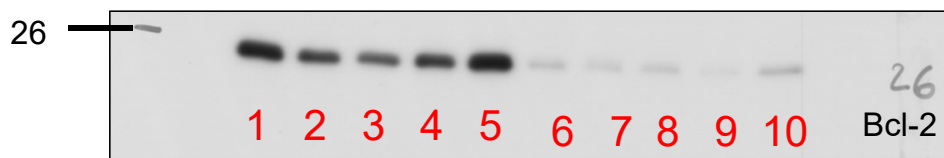
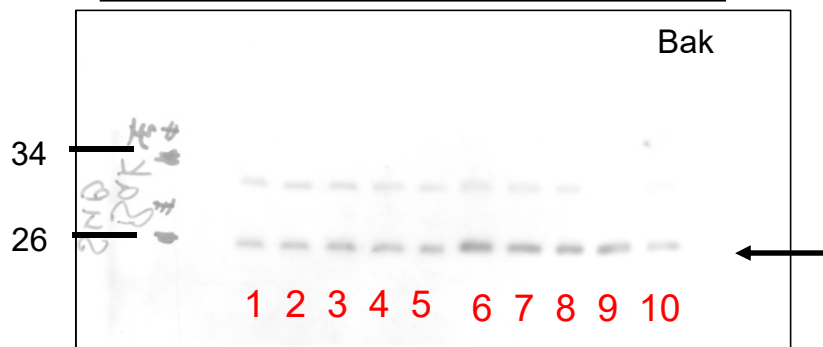
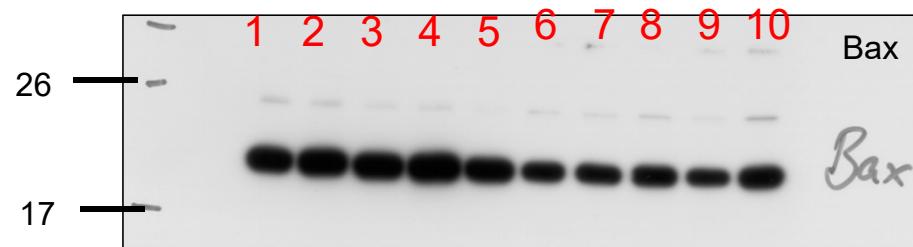
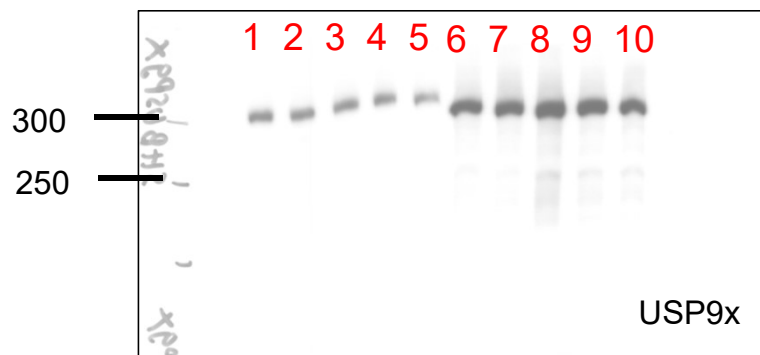
- 1: 0 h, Ctrl 1
- 2: 24 h, 10 Gy
- 3: 48 h, 10 Gy
- 4: 72 h, 10 Gy
- 5: 0 h, Ctrl 2

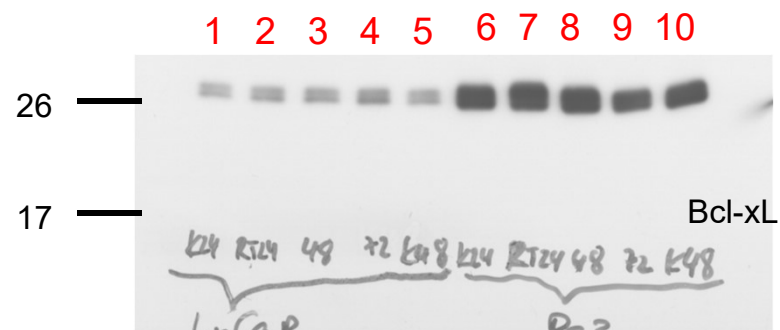
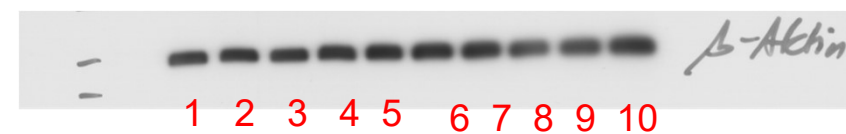
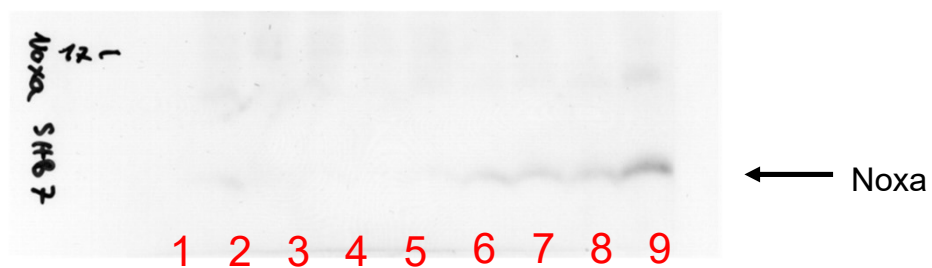
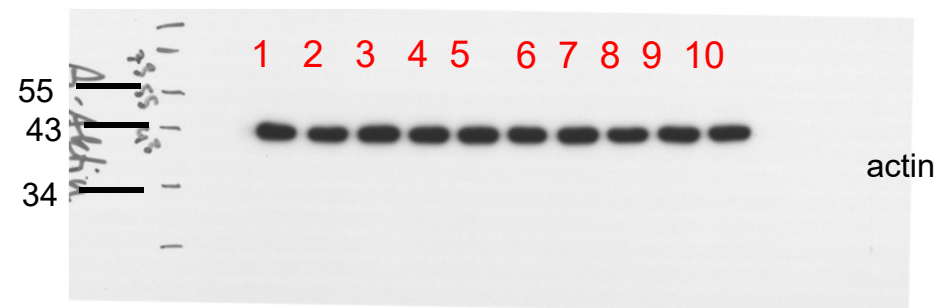
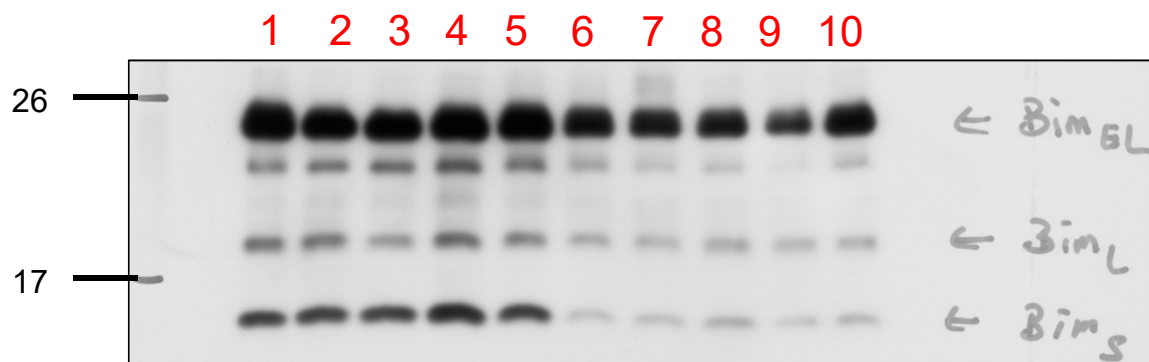
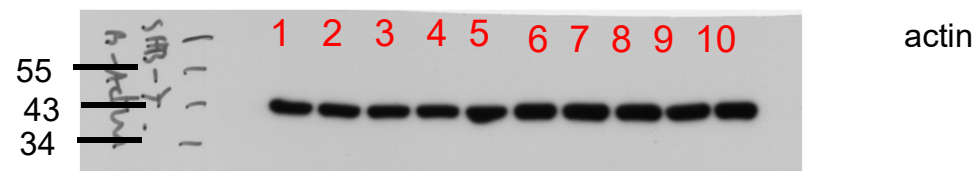
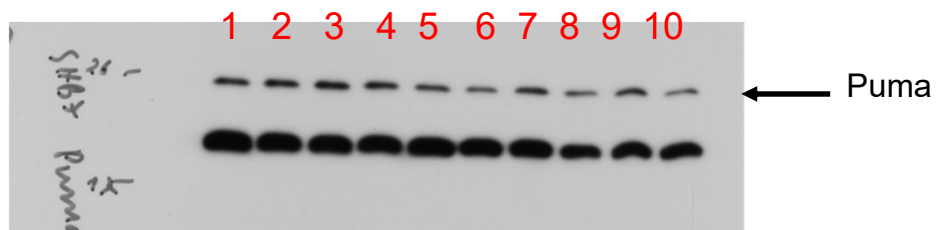


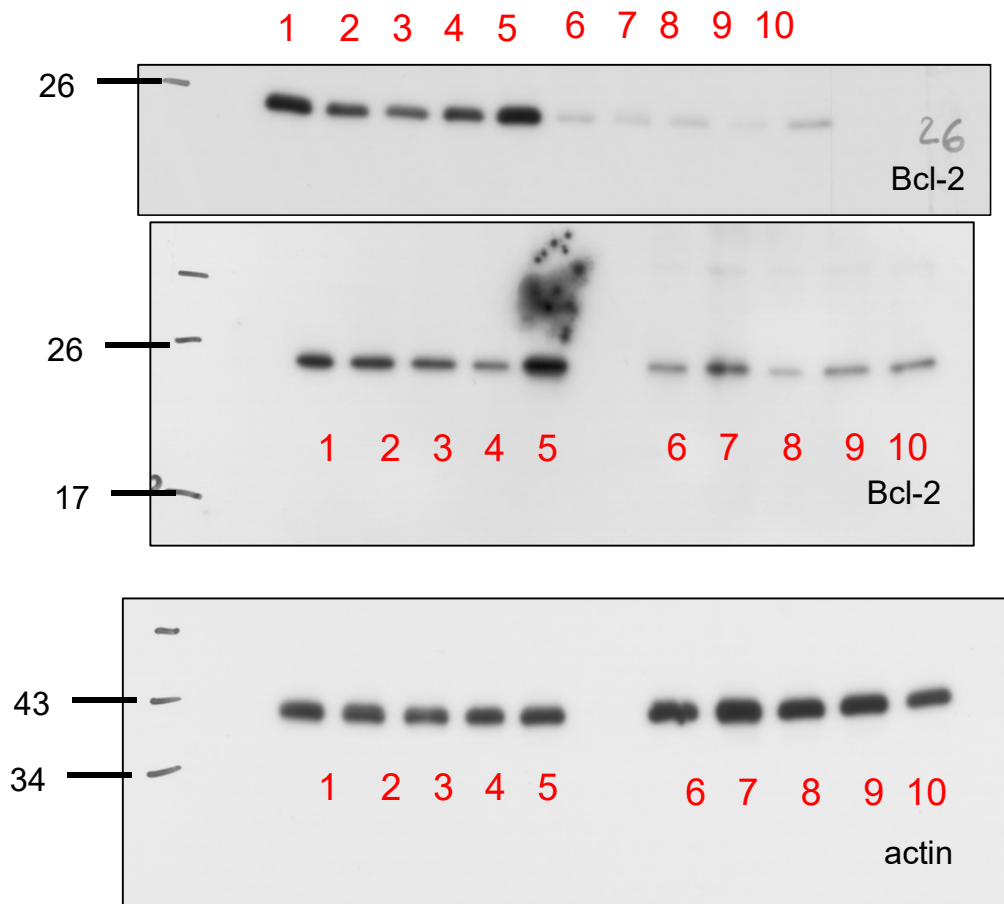
PC3:

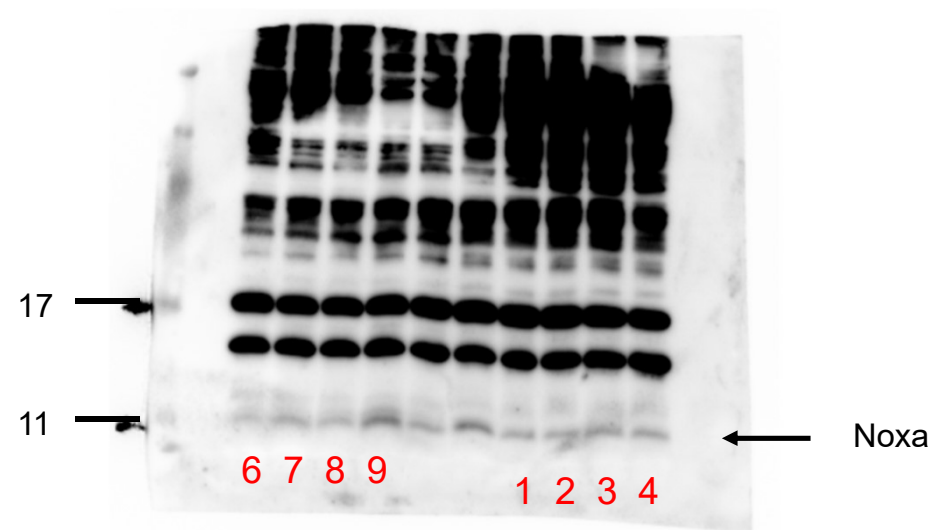
- 6: 0 h, Ctrl 1
- 7: 24 h, 10 Gy
- 8: 48 h, 10 Gy
- 9: 72 h, 10 Gy
- 10: 0 h, Ctrl 2









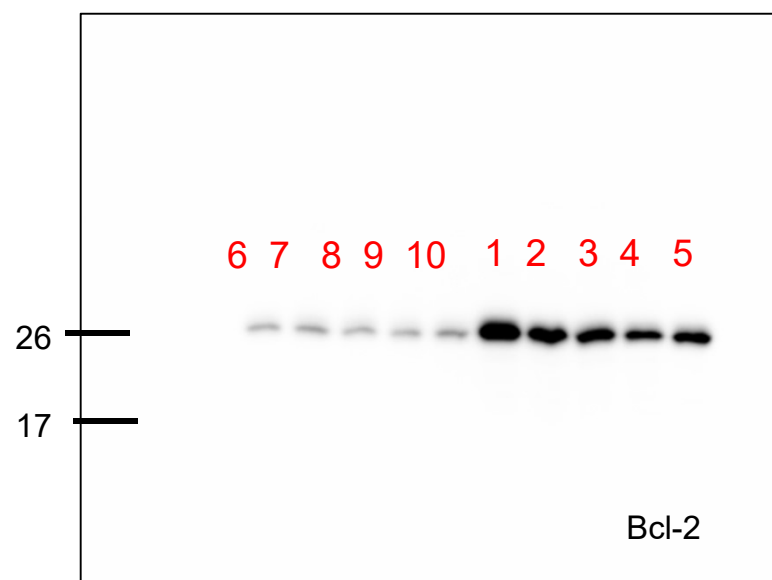


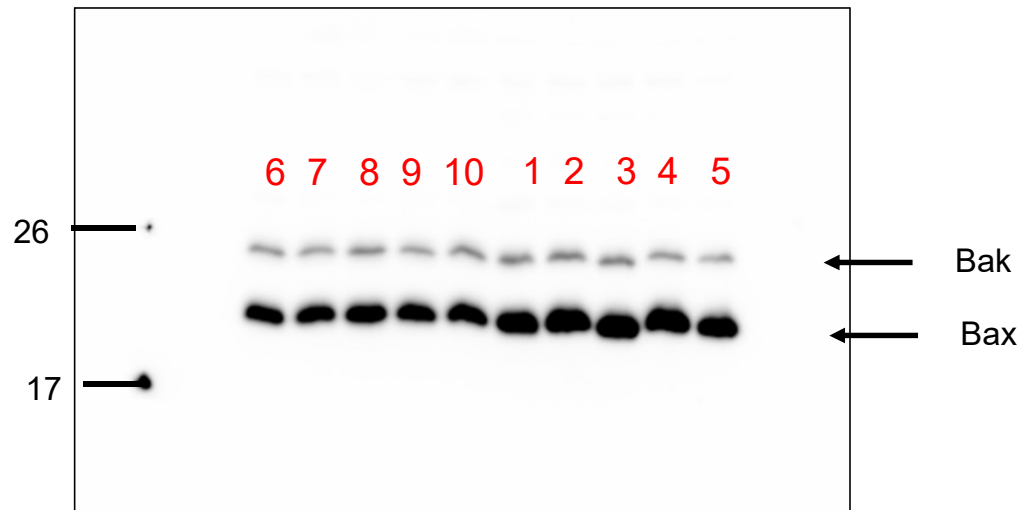
LNCaP

- 1: 0 h, Ctrl 1
- 2: 24 h, 10 Gy
- 3: 48 h, 10 Gy
- 4: 72 h, 10 Gy
- 5: 0 h, Ctrl 2

PC3:

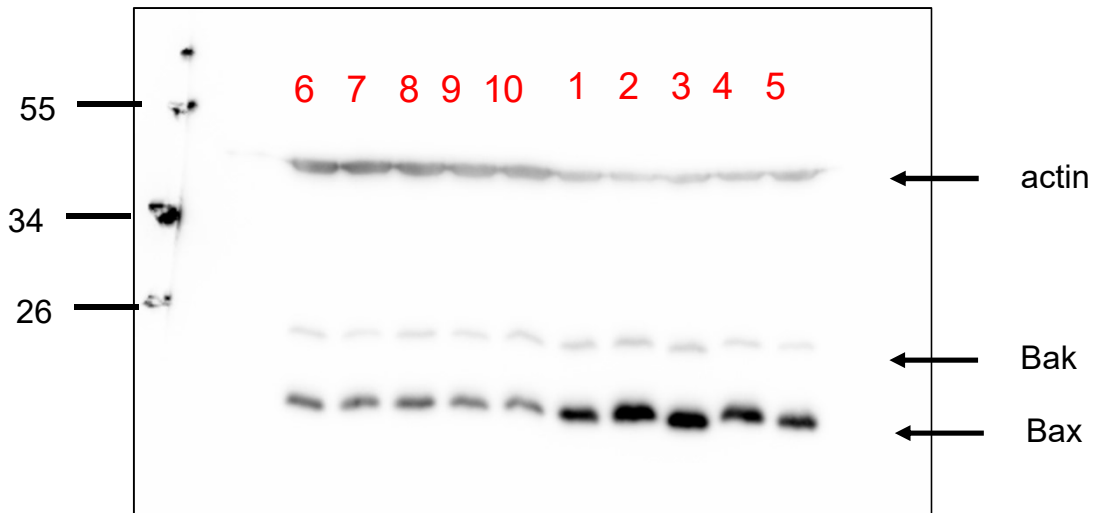
- 6: 0 h, Ctrl 1
- 7: 24 h, 10 Gy
- 8: 48 h, 10 Gy
- 9: 72 h, 10 Gy
- 10: 0 h, Ctrl 2





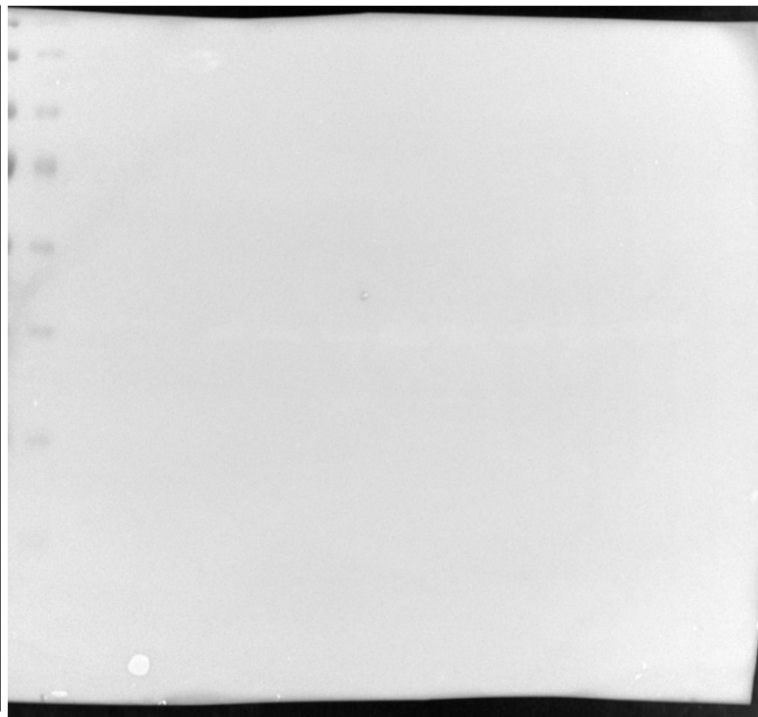
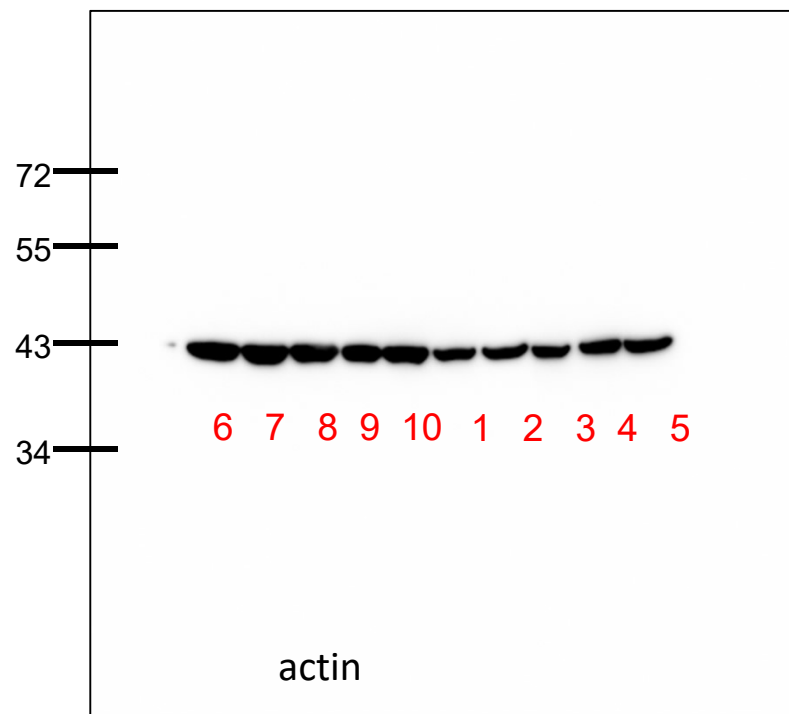
LNCaP

1: 0 h, Ctrl 1
2: 24 h, 10 Gy
3: 48 h, 10 Gy
4: 72 h, 10 Gy
5: 0 h, Ctrl 2



PC3:

6: 0 h, Ctrl 1
7: 24 h, 10 Gy
8: 48 h, 10 Gy
9: 72 h, 10 Gy
10: 0 h, Ctrl 2



LNCaP

- 1: 0 h, Ctrl 1
- 2: 24 h, 10 Gy
- 3: 48 h, 10 Gy
- 4: 72 h, 10 Gy
- 5: 0 h, Ctrl 2

PC3:

- 6: 0 h, Ctrl 1
- 7: 24 h, 10 Gy
- 8: 48 h, 10 Gy
- 9: 72 h, 10 Gy
- 10: 0 h, Ctrl 2