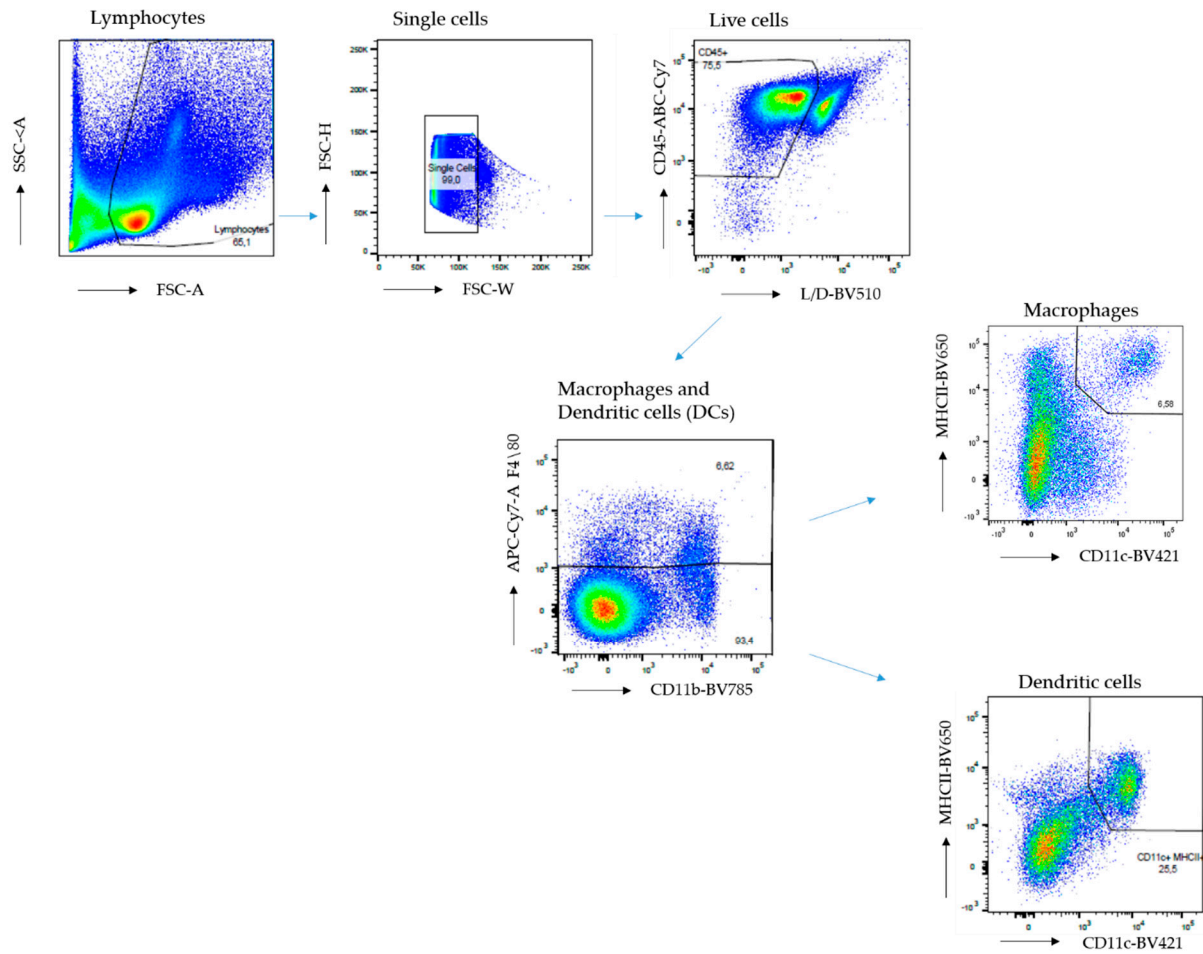
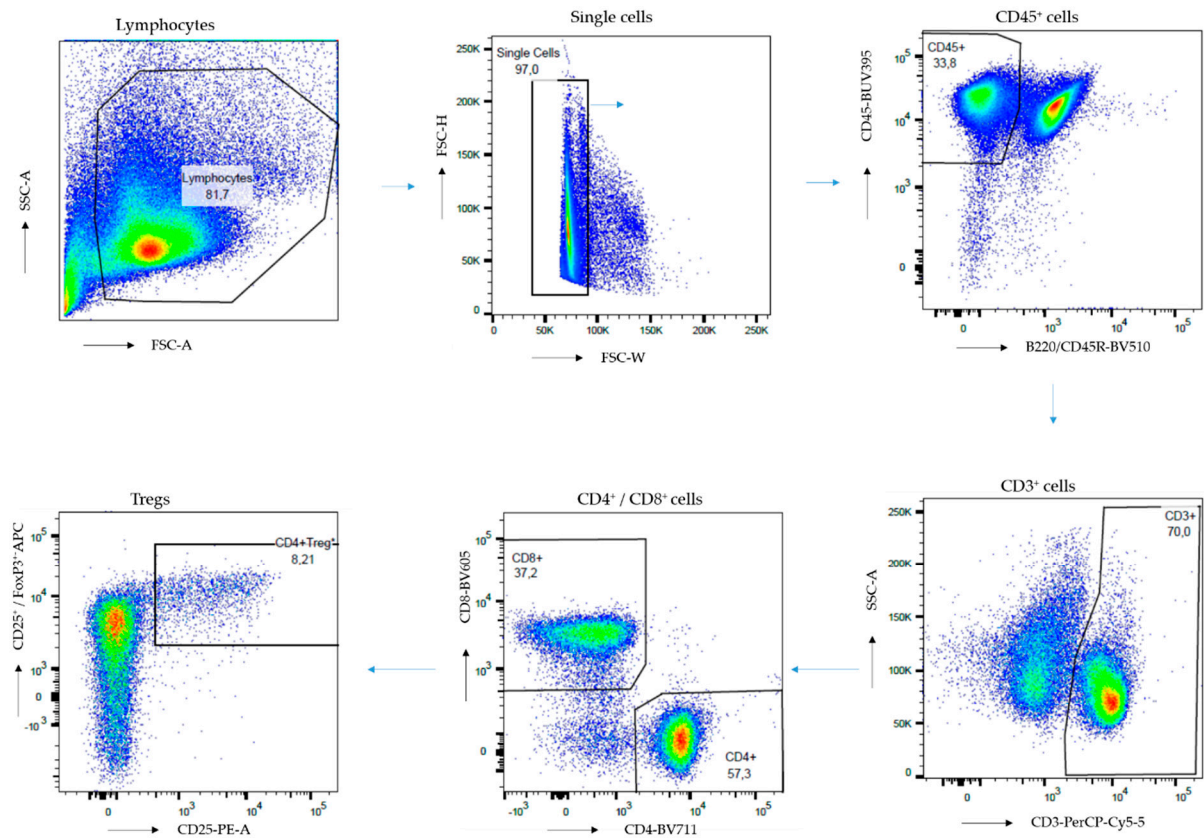


Supplementary Figure 1 Stoyanova et al.



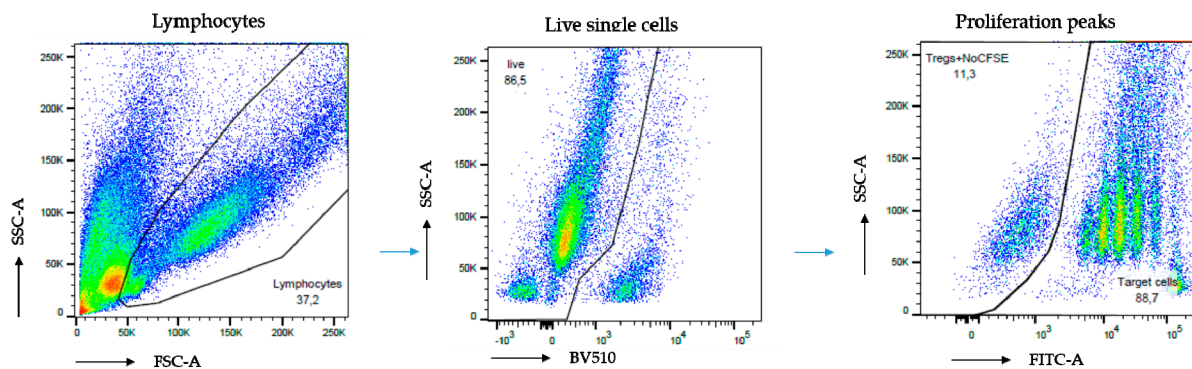
Gating strategy for identifying macrophages and dendritic cells. Lymphocytes were selected from a forward scatter area vs side scatter area dot plot, and single cells were subsequently selected in a forward scatter-area vs forward scatter height dot plot. Live CD45⁺ cells were identified and divided into DCs and macrophages.

Supplementary Figure 2 Stoyanova et al.



Gating strategy for identifying main lymphocyte subpopulations. Lymphocytes were selected from a forward scatter area vs side scatter area dot plot, and single cells were subsequently selected in a forward scatter-area vs forward scatter height dot plot. Live CD45⁺ cells were subdivided from the B220-expressing B-lymphocytes. CD3⁺, following CD4⁺ and CD8⁺ cells were identified via co-staining with BUV395, BV711 and BV605 resp. Tregs were defined as CD25⁺ FoxP3⁺ cells.

Supplementary Figure 3 Stoyanova et al.



Gating strategy for CFSE-based proliferation of CD4⁺ T cells. Lymphocytes were selected from a forward scatter area vs side scatter area dot plot, and single cells were subsequently selected in a forward scatter-area vs forward scatter height dot plot. Live CD4⁺ cells were identified via staining with BV510. Proliferation peaks of Tregs were identified via CFSE-staining.