

Targeted-lymphoma drug delivery system based on the Sgc8-c aptamer.

Estefanía Sicco^{1,2}, Hugo Cerecetto¹, Victoria Calzada^{1,*} and María Moreno^{2,*}

SUPPLEMENTARY MATERIALS

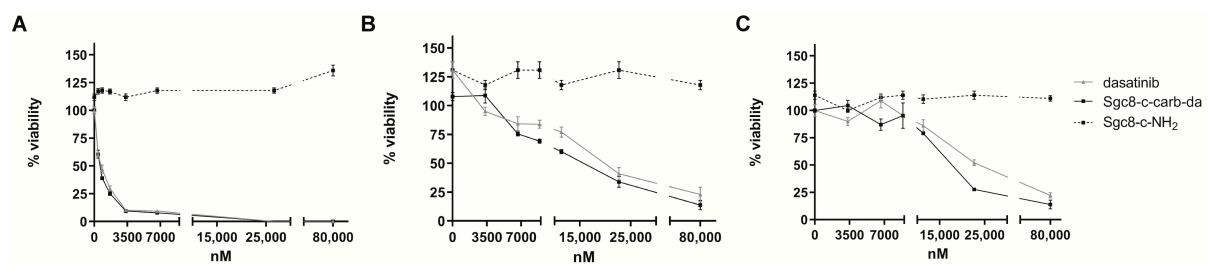


Figure S1: Dose-response curves for dasatinib, **Sgc8-c-carb-da**, and Sgc8-c-NH₂ using the MTT method in (A) A20, (B) CCRF-CEM, and (C) U87 MG cells. Graph shows mean \pm SD, n = 10 per condition.

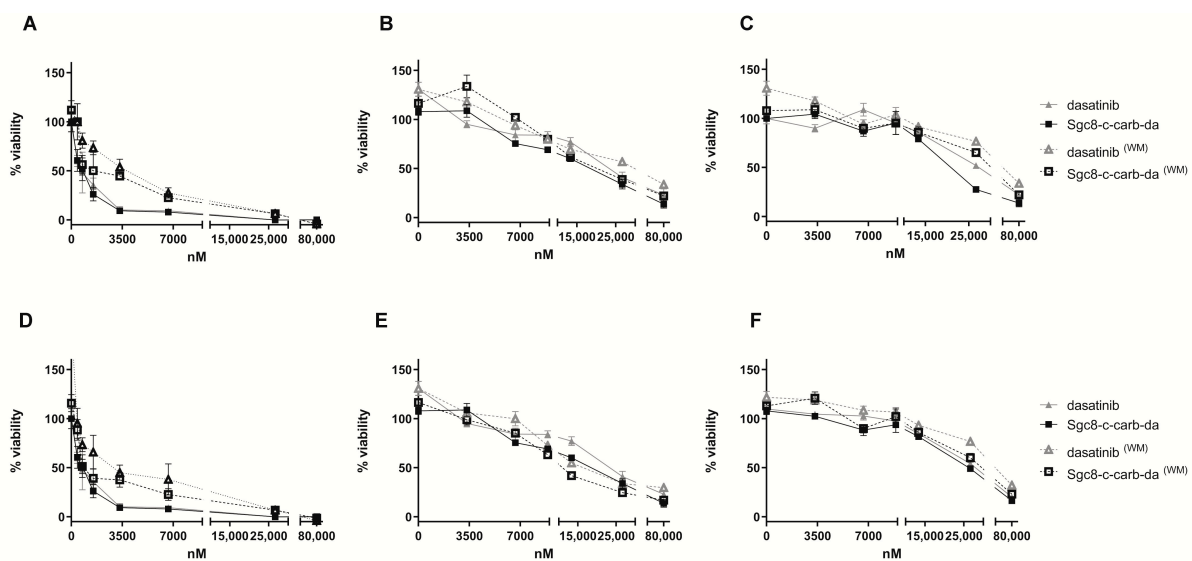


Figure S2. Dose-response curves for dasatinib or **Sgc8-c-carb-da** after 48 h of incubation, with (WM) or without the washing method (60 or 120 min of drug exposure followed by a wash and further incubation), with the different cell lines: (A) A20 (60 min), (B) CCRF-CEM (60 min), (C) U87 MG (60 min), (D) A20 (120 min), (E) CCRF-CEM (120 min), and (F) U87 MG (120 min). Cytotoxicity was evaluated by MTT. Graph shows mean \pm SD, n = 10 per condition.

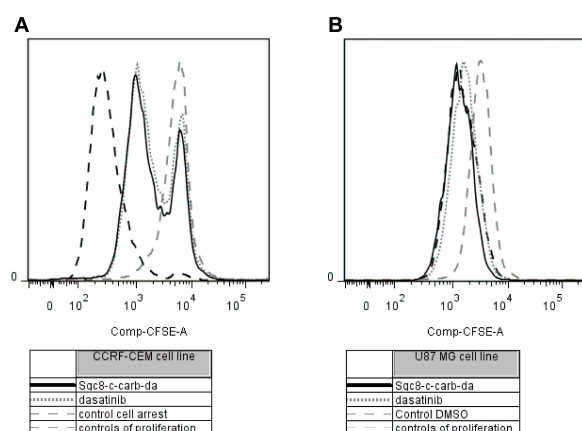


Figure S3. Arrest of cell proliferation induced by **Sgc8-c-carb-da** and dasatinib in (A) CCRF-CEM and (B) U87 MG cell lines. Cell proliferation arrest histogram, controls of proliferation, and cell arrest: incubation with medium (100% proliferating cells) and 20% of DMSO (0% proliferating cells), respectively.

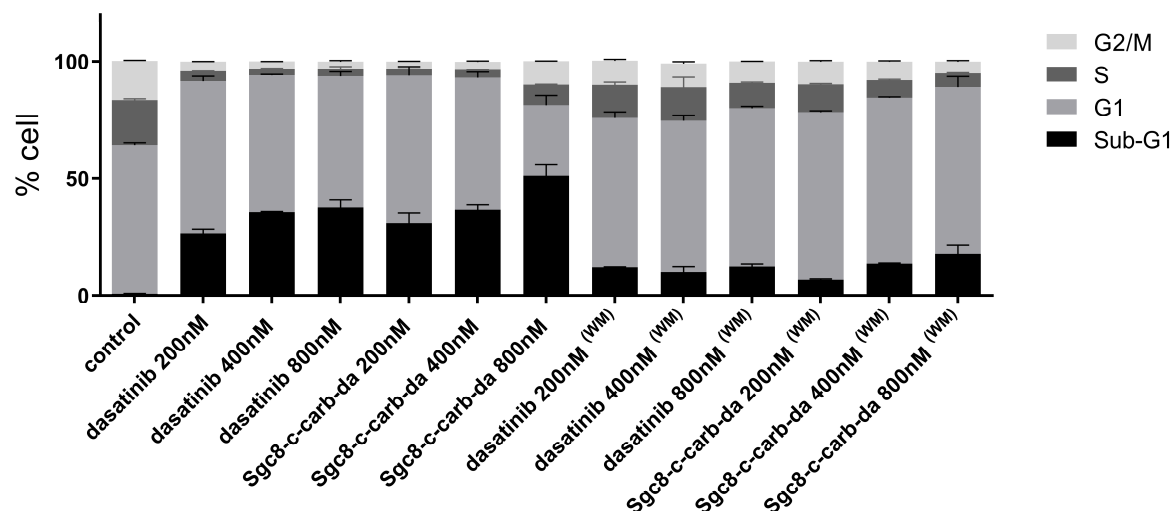


Figure S4. Phases of the cell cycle induced by **Sgc8-c-carb-da** and dasatinib in A20 cells. Assay performed on the A20 cells after incubation with 200, 400, and 800 nM **Sgc8-c-carb-da** and dasatinib for 24 h, with (WM) or without the washing method (60 min of drug exposure followed by a wash and further incubation). Graph shows mean \pm SD, $n = 3$ per condition.