

# Supplementary Materials

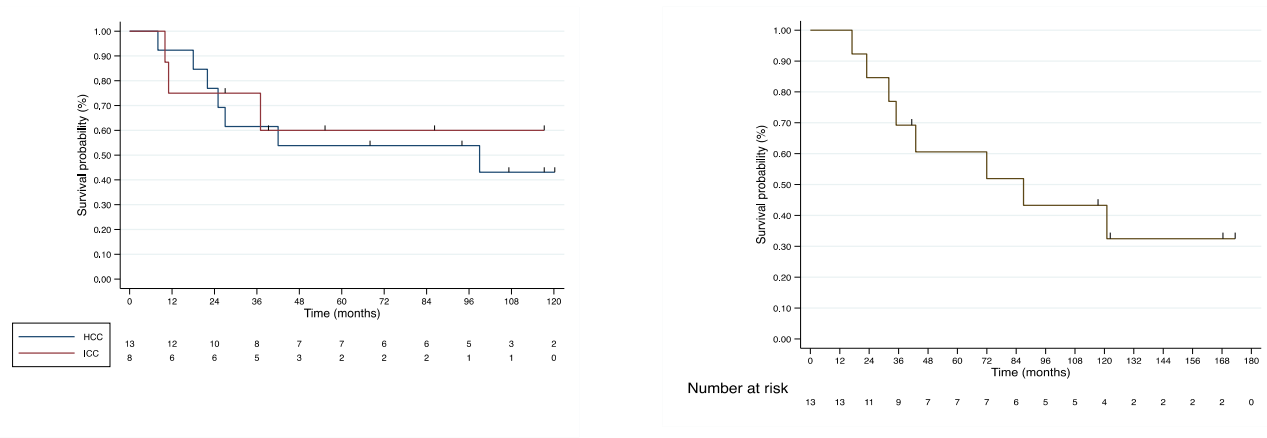
## Tables

**Table S1.** Recurrence outcomes.

	Resected (n= 21)		Transplanted (n=13)
<b>Number of recurrences</b>	<b>7 (33.3)</b>		<b>3 (23.1)</b>
<b>Tumor type</b>			
• HCC	6 (46.2)		3 (23.1)
• ICC	1 (12.5)		-
<b>Site of first recurrence</b>	<b>ICC</b>	<b>HCC</b>	<b>HCC</b>
<b>Liver only</b>	<b>1 (12.5)</b>	<b>3 (14.3)</b>	<b>1 (7.7)</b>
<b>Liver + nonliver sites</b>	<b>0 (0.0)</b>	<b>1 (4.8)</b>	<b>1 (7.7)</b>
• Liver + bone	0 (0.0)	0 (0.0)	1 (7.7)
• Liver + lung	0 (0.0)	1 (4.8)	0 (0.0)
<b>Extrahepatic</b>	<b>0 (0.0)</b>	<b>2 (9.5)</b>	<b>1 (7.7)</b>
• Diaphragm + bone + adenophatic	0 (0.0)	0 (0.0)	1 (7.7)
• Lung + cerebral	0 (0.0)	1 (4.8)	0 (0.0)
• Bone	0 (0.0)	1 (4.8)	0 (0.0)

*Data are expressed as n (%) unless otherwise specified*  
*HCC hepatocellular carcinoma, ICC intrahepatic cholangiocarcinoma*

## Figures



**Figure S1. a** Kaplan-Meier DFS curves from diagnosis for LR group according to diagnosis. **b** Kaplan-Meier DFS curves from liver transplantation